

## THE SHEEP-LOUSE.

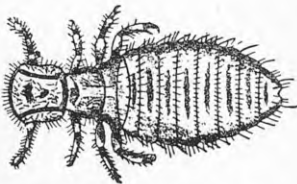
### ITS EFFECTS, DETECTION, AND SUPPRESSION.

A. T. P. HUBBARD.

SINCE the eradication of scab from the flocks of the Dominion owners may congratulate themselves upon the comparative immunity which their sheep enjoy from pests generally. Apart from the tick and louse, our sheep are practically free from external parasites. The presence of these, however, entails serious loss both in wool and carcase, and should therefore command the earnest attention of all sheepowners. That considerable apathy exists on the part of many farmers, particularly in regard to lice, cannot be denied, and it is with the hope of removing this, and stimulating renewed energy in combating these vermin, that this article is written.

The tick being larger and consequently more conspicuous than the louse, it is perhaps regarded by many as being the more harmful, whereas the louse is really a much more serious menace to the welfare of the sheep. Reduced vitality, loss of condition, and injury to the fleece, are each directly attributable to the ravages of the louse, dependent as it is for its sustenance partly upon the blood it extracts from its victims and partly on the yolk of the wool. Owing to continual restlessness of the sheep, caused through irritation, its vitality and condition are rapidly reduced, proper growth of wool is retarded, and the fleece is seriously damaged through constant rubbing against fences, logs, &c. With reduced vitality the louse-affected sheep naturally becomes a prey to other ailments. In this connection

I am of the opinion that much of the difficulty experienced in this country in raising young sheep would be overcome if owners exercised greater care in ensuring that their lambs are maintained free of lice. The rigour of the winter months demands that every endeavour should be made to rid the lambs as far as possible of anything calculated to undermine the constitution.



SHEEP-LOUSE, FEMALE  
(*Trichodectes Sphaeroceyhalus*).  
Magnified 20 diameters.

#### METHOD OF DETECTION.

As many sheepowners freely admit that they "don't know a louse when they see it," nor know how to look for it, a few remarks in this direction