

THE TOURIST AND TRAVELLER. WHERE TO STAY AND WHERE TO GO.

NAPIER.

PROVINCIAL HOTEL,
N A P I E R.
THE LEADING COMMERCIAL HOTEL
IN NAPIER.
Now under New Management.
Central, commodious, comfortable.
Adjacent to Railway Station, Theatre and Marine Parade. The Provincial offers to Tourist and Travellers a Comfortable Hotel at a moderate tariff.
T. A. HEATH Proprietor.
(Late Assistant Manager Masonic Hotel.)

ALBION HOTEL
N A P I E R.
Renovated throughout, and offers excellent accommodation and the best of liquors. Tariff, from 8s. per day.
H. BARNETT Proprietor.

ARCADIA PRIVATE HOTEL
R. W. MOODY Proprietor.
N A P I E R.

Within easy reach of Railway Station. Excellent accommodation for the travelling public. Tariff 10s. per day, £3 per week. Telephone 1570. Telegrams, "Arcadia."
(Seventeen years in Masonic Hotel.)

ONEHUNGA.

RAILWAY TERMINUS HOTEL,
O N E H U N G A.
Renovated and refurbished and extensive alterations. Everything of the best. A hearty welcome extended to visitors.
J. N. LYONS Proprietor.

OTAKI.

CENTRAL HOTEL,
O T A K I.
Most popular house of call in the town. All wines, spirits and ales true to label. Speight's Ale on draught. Tariff moderate. Ring 'Phone 3 for accommodation. P.O. Box 19.
J. D. HOWELL Proprietor.

RAILWAY HOTEL
O T A K I,
(Right opposite Railway Station.)
All trains stop sufficient time for refreshments. Nothing but the very best of spirits, ales, etc. Good table. Handy to racecourse.
JACK MCGILL Proprietor.
(Late of Hawke's Bay.)

TELEGRAPH HOTEL,
O T A K I.
This old-established popular house is now under the management of MR. C. J. WALTER, formerly of Wellington, who extends a welcome to the travelling public. All liquors, wines and spirits true to label. Everything of the very best. 'Phone 73.
C. J. WALTER Proprietor

OTAHUHU.

CRITERION HOTEL,
O T A H U H U.
FIRST-CLASS ACCOMMODATION AND ATTENTION.
Wines, Ales, and Spirits of the Highest Order.
N. CUNNINGHAM Proprietor.

OTIRA

TERMINUS HOTEL,
O T I R A.
E. PENHALLURIAK .. Proprietor.
(Late of Moana.)
Tourist and travellers will find First-class Accommodation and the Best of Ales, Wines and Spirits. Coach passengers have ample time to obtain refreshments.

PAHIATUA.

CLUB HOTEL,
P A H I A T U A.
J. BYRNE Proprietor.
MOST COMFORTABLE HOSTELRY IN THE TOWN.
Everything of the very best. Tariff, 3/6 per day. 'Phone 21.

PANMURE.

PANMURE HOTEL,
P A N M U R E,
AND DYER'S HALL, PANMURE.
HENRY H. DYER Proprietor.
Wines and Spirits of the Best Brands only stocked. A hearty welcome always awaiting old friends and new faces.

PALMERSTON NORTH.

THE CLUB HOTEL,
PALMERSTON NORTH.
Stands on two acres of land; frontage 165ft.; promenade balcony; contains 60 bedrooms, private sitting-rooms and 12 sample rooms. The appointed house for the Association of N.Z. and Australian Commercial Travellers.
H. B. TUCKER,
Proprietor and Guest.

CAFE DE PARIS HOTEL,
PALMERSTON NORTH.
Right opposite Railway Station. All trains stop sufficient time for refreshments. Speight's ale, and all wines and spirits true to label. Excellent accommodation.
P. J. PURCELL Proprietor.

NEW ROYAL HOTEL
Modern Brick Building; electric light throughout. Tariff, 9s. per day. First-class Luncheon, 1s. 6d. Speight's Beer and Best of Wines and Spirits. Box 203. 'Phone 94.
S. W. R. EVANS Proprietor.
(Late of Hastie's Hotel, Falding.)

PATEA.

THE ALBION HOTEL,
P A T E A.
First-class accommodation for tourists, families and travellers. Wines, Ales and Spirits of the Best.
J. A. COOGAN Proprietor.

PORT CHALMERS.

PORT CHALMERS HOTEL,
PORT CHALMERS.
RENOVATED AND REFURNISHED THROUGHOUT.
Now under the Proprietorship of G. A. LUONI.
(Late of Wellington.)

RIVERTON.

WHERE TO STAY IN RIVERTON.
RAILWAY HOTEL,
Directly Opposite Railway Station.
Ideal Hotel for a holiday at the sea side. Everything of the very best.
CHAS. DE CLIFFORD .. Proprietor.

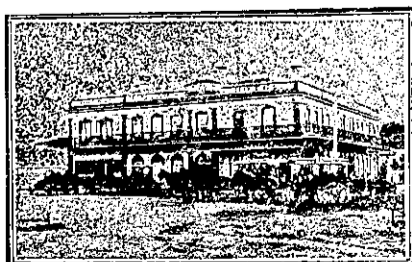
ROTORUA.

GRANDE VUE,
R O T O R U A.
Situating centrally, with balconies overlooking the Beautiful Government Gardens, this House is without a rival in Rotorua.
The Government Bath Buildings, in the same grounds, are but two or three minutes' walk from the house, thus affording special bathing facilities to patrons.
GRANDE VUE has recently been taken over by
MR. GEORGE BROWN,
in conjunction with MRS. BROWN; both for many years in charge of the Grand Hotel, Rotorua. Visitors to Rotorua can rely on finding their every comfort supplied at Grande Vue.
Tariff, 12s. 6d. per day.
Telegrams: "Grande Vue, Rotorua."
Thos. Cook and Son, Booking Agents.

SHANNON.

ALBION HOTEL,
S H A N N O N.
The Popular house of call. New, commodious; electric light. Most up-to-date on the Manawatu line. First-class accommodation. Speight's Ale on draught. All wines and spirits true to label. A welcome to all. Tariff, 8s. per diem. 'Phone 14.
W. McKEGG Proprietor
(Late of Otaki.)

TAURANGA.



STAR HOTEL,
T A U R A N G A.
The Leading Commercial Hotel in the Bay of Plenty. Best accommodation. Excellent cuisine. Hot and cold baths. Telegrams: "Star, Tauranga." 'Phone 6. P.O. Box 21.
A. BROWN Proprietor.

TE POHUE.

LAKE HOTEL,
TE POHUE (on Main Napier-Taupo Rd)
Splendid health resort. Excellent accommodation for tourists and travellers. Sportsmen's paradise. Capital shooting and fishing. Big bags always available. Everything of the very best. A hearty welcome to all.
R. TAKLE Proprietor.
(Formerly of Dannevirke.)

TIMARU.

DOMINION HOTEL,
T I M A R U.
FIRST-CLASS ACCOMMODATION FOR TOURISTS AND TRAVELLERS.
Speciality: All Liquors True to Label. 'Phone 153.
PRATT AND SHEEN .. Proprietors.

WAIKAWA.

COMMERCIAL HOTEL,
W A I K A W A.
Private suites of apartments and every convenience for the accommodation of the public. Wines, spirits and ales of the best quality only. A first-class billiard table. Stabling and padlocking accommodation.
W. PELLOW Proprietor.

WAIWERA.



HOT SPRINGS HOTEL,
W A I W E R A.
(The Brighton of N.Z. The Leading Seaside Resort of the Dominion.)
On the Hauraki Gulf, 28 miles from Auckland by road or steamer. A First-class Seaside Hotel, with Modern Improvements. Excellent cuisine; electric light, motor garage; fishing, tennis, etc.; hot mineral swimming baths. Wines, spirits and bottled ales of the best. Under new management. Terms moderate.
T. JEPHCOATE Proprietor.

WOODVILLE.

COMMERCIAL HOTEL,
W O O D V I L L E.
Right opposite Railway Station. Trains stop sufficient time for refreshments. Capital stable accommodation. All wines, spirits and ales true to label. Excellent accommodation for travellers.
CHARLIE C. KING Proprietor
(Late Police Department Napier and Palmerston North.)
"Italians are pouring into New York at the average rate of a thousand a day," says Mr. E. A. Tanner, of Wellington, who has just returned from America.

WANGANUI.

WHERE TO STAY IN WANGANUI.
METROPOLITAN HOTEL,
Right Opposite Railway Station.
Most convenient hotel in the town. Everything of the very best. Tariff, 8s. per day. A welcome to all.
V. H. WILSON Proprietor.

FEDERAL HOTEL,
W A N G A N U I.

Ideal surroundings, facing Moutoa Gardens. Offers first-class accommodation to the travelling public. Moderate tariff. Now under the proprietorship of MR. E. DWYER.

WHERE TO STAY IN WANGANUI.
CHAVANNES HOTEL,
This popular house has been taken over by MR. H. OAKLEY BROWNE, well known in newspaper and political circles, and he extends a welcome to his many friends throughout New Zealand. Excellent table. Modern management. 'Phone 24.
H. OAKLEY BROWNE .. Proprietor

General Booth, interviewed after his tour of the world, thought New Zealand one of the most desirable countries he had visited "I fell in love with the people," he said, "but I did not find them so energetic, so filled with that imagination which is the basis for success in life, so capable of sacrifice in a great cause, as I found the people of Australia. Still, they captivated me."

Auckland promises to be unusually congested at Christmas time, the Davis-Cup tennis fixture and the A.R.C. Summer meeting at Ellerslie being the outstanding attractions. Messrs. Thomas Cook and Son report that already all the available accommodation in Auckland has been booked for the Christmas-New Year week.

In America, the building contractor, as New Zealand knows him, does not exist, says Mr. James Bennie, who has recently returned to Wellington. The architect is the builder. He works on a percentage of the cost, usually 20 per cent., as tendering is out of the question owing to the rapid fluctuations in the cost of materials and labour. The way in which the Americans lavish money on building opened Mr. Bennie's eyes. Questioned as to methods of construction, Mr. Bennie said that America was still loyal to the steel frame, but he was of opinion that reinforced concrete was gradually supplanting that form of construction.

At the recent meeting of the Hastings Borough Council, Councillor Fowler stated that hardly any taxi-drivers were exhibiting in a prominent part of the taxi-cars a scale of charges. Several councillors said they had received complaints regarding overcharging. Councillors were unanimously of opinion that a scale of charges should be posted in a prominent place in all vehicles plying for hire and the borough inspector was instructed to inquire into the position and report to the next meeting.

"KAKA" TOASTS No 2

"KAKA" ALE
The Nation's Best "Teaster."

Brewed, Bottled, and Hermetically Sealed under ideal conditions by
W. STRACHAN & Co., Dunedin