

**TOURIST AND TRAVELLER.**

Mr. T. Shoa, Chinese Vice-Consul for New Zealand, has left for Hong Kong from Sydney by the Kanowna.

Mr. Ernest Clark, a brother of Sir Rupert Clark, Bart., has arrived in Wellington from Melbourne by the Westralia.

Information has been received in Wellington that the members of the New Zealand Olympic team are on board the Nestor, which is due in Sydney on December 6. They will be leaving Sydney by the Manuka on December 9, and are due in Wellington on December 13.

Sir Thomas Mackenzie, ex-High Commissioner for New Zealand, arrived in Wellington by the Remuera last week, and was tendered a civic reception in the Town Hall Concert Chamber by the Prime Minister, Ministers of the Crown, and the Mayor (Mr. J. P. Luke).

Dr. J. Bronte Gatenby, a New Zealander, was the first to qualify for the degree of Doctor of Philosophy, recently created at Oxford University. He was recently a Fellow of the Royal Microscopical Society, is lecturer on Cytology at University College, London, and is appointed to the new Readership in Cytology, which it is proposed to set up.

**UNREST AND FOOD PRICES.  
INTERNATIONAL ENQUIRY SUGGESTED.**

**LEAGUE OF NATIONS ASKED TO INVESTIGATE WORLD PROBLEM.**

Presiding at the twelfth annual general meeting of the Argentine Estates of Bovril, Ltd., held in London on the 26th August, 1920, Sir George Lawson Johnston (Chairman), referring to his recent visit to the Argentine, said:—

I was accorded the privilege of a private interview with the President of the Republic, and have pleasant recollections of his Excellency's courtesy and of a very interesting conversation. It may interest you to know that the increase in the cost of living is not only felt in an importing country like the United Kingdom. In the Argentine, I found the prices of, for instance, bread, meat, sugar, and eggs all over twice the 1914 prices, though these articles are all produced in, and surpluses are even exported from that country, whilst coal which is imported into Buenos Aires, costs over five times the pre-war price.

Argentina is a great exporter of wheat, but in Buenos Aires I found the bordings covered with official posters pictorially explaining economical methods in the use of bread. At home we have been told by economic experts that high costs are in part due to the very large issues of paper money and consequent depreciation of currency values. It is obvious that this is not the cause in Argentina, as there the issue of paper dollars shows only a comparative small increase—about 30 per cent.—whilst the relative proportion of gold to paper currency is higher than it was before the war.

Popular feeling has led the Argentine Government to prohibit exports in the case of certain foodstuffs, whilst the foreigner is made to pay taxes by way of export duties, which have been put on nearly all products, on a basis of a percentage of the excess over pre-war prices.

**THE SUSPICION OF "PROFITEERING."**

In spite of record prosperity you as frequently hear the cry of "profiteer" in South America as you do here, and wages and labour questions are at least as difficult. In fact, in comparison, inter-class friendship is less strained in the United Kingdom, probably owing to the special tax measures that have been taken to "pluck" the maker of war profits. Here the "profiteer" has lost many feathers through excess profits duties, and the old rich have been turned into new poor by income and super taxes, death duties, etc. In the Argentine Republic, on the other hand, where so many have grown richer since 1914, an important topic of conversation during the time of my visit was the possibility of a 10d. in the £ maximum income tax being imposed.

The fact is that the bulk of the discontent all over the world is caused not simply by the increase in prices, but has arisen because popular opinion believes them to have been raised excessively by "profiteers." As we of the Bovril group are somewhat persistent anti-profiteers in precept and practice, I take the liberty of suggesting that until the matter is investigated officially and internationally, and the instances and effects of "profiteering" are sifted out from other causes creating the rise in the cost of living, we shall not begin to get rid of the feelings of class suspicion and discontent that are so prevalent throughout the world.

**FOOD COSTS: SUGGESTED INQUIRY BY THE LEAGUE OF NATIONS.**

I see the League of Nations has committees on armaments, international health, transit, waterway problems, and international justice. May I respectfully suggest to the authorities of that League that they can do a great world service by adding a committee to consider internationally the question of the cost of food?

It was recently stated that the newspapers give only brief summaries of even important speeches about the League of Nations, and who are better judges of what the public wants to read than the newspaper editors? I venture to suggest that the tackling of this question of food costs by an authoritative committee of the League

of Nations would do more to awaken practical public interest in the League, and to secure universal support for it than any other single action it could take. This is the subject of all others that touches the daily life of the people and unceasingly absorbs the attention of the masses in all countries throughout the world. National investigations are bound to be limited in scope—to stop short at the incidence of exchange and similar problems—but a committee of the League of Nations would have at its disposal the official data from the greater part of the world, and its findings should be free from any suspicion of local political bias.

**Weaning time for baby is "Benger time."**



**BENGER'S Food**

Weaning time need not check development nor render baby fretful. The transition stage from the breast to normal food is the stage when Benger's should be given to a breast-fed baby.

is always prepared with fresh new milk. It does more than enrich the milk with valuable food elements; it adjusts the milk itself to the delicate digestion of a child. Baby takes the change happily and without check.

THE BOOK OF BENGER'S FOOD is a medically approved guide to the rearing of infants and the care of invalids. Every household should possess a copy. Write for it to-day—post free.

BENGER'S FOOD LTD., 117, FINE ST., SYDNEY.  
Sole Proprietors and Manufacturers:  
BENGER'S FOOD LTD., MANCHESTER, ENG.

**SPORTSMEN! ATTENTION!**

**F. KNIGHT,**  
SADDLER AND HARNESS MAKER,  
NEWMARKET AND MANUKAU ROAD, PARNELL.

Has just opened up some very Fine Stocks of Racing Harness, English, American and Colonial Leather.

We make a Specialty of Trotting Boots, Hopples and Bloomers.

We stock all kinds of Racing and Sporting Accessories.  
ESTIMATES FURNISHED.

Phones: 876 (2 rings), Parnell.  
876 (3 rings), Newmarket.

**WRAGGE'S WEATHER BUREAU INSTITUTE AND WAIATA GARDENS, BIRKENHEAD, AUCKLAND.**—Farmers, Pastoralists, Sportsmen ASK CLEMENT WRAGGE about the Weather and Coming Seasons. Best advice. Terms Moderate. Apply Direct.

FINEST PRIVATE HOTEL IN N.Z.

**Braeburn**

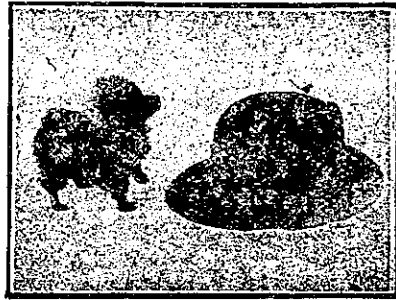
This first-class private hotel has a Dominion-wide reputation. It provides the best of everything for the travelling public. The hotel is charmingly situated overlooking the river, and is a modern well appointed brick building.



Whanganui's Leading Hotel

**TE WHARE KENNELS.**

The Home of High-class Pekingese and Miniature Pomeranians.



Te Whare Golden Meteor, by Remuera Gold. Weight, 16 1/4 ozs.

**POMERANIANS AT STUD.**

Remuera Gold (imp.), £4 4s.; Remuera Masterpiece (orange), £3 3s.; Remuera Sunstar (orange), £3 3s.; Te Whare Kismet (orange), £3 3s.; Te Whare Sunshine Gold (orange), £3 3s.; Te Whare Goldfire (orange), £3 3s.

**PEKINGESE AT STUD.**

Mah Kong of Te Whare.—The latest imported red sib. dog. The best bred Pekingese Stud Dog in Australasia. Fee, £5 5s. Lu Ti of Te Whare (sable), one of the best N.Z. bred dogs. A real sensation. Fee, £5 5s.

PUPPIES ALWAYS FOR SALE.

**MRS. F. HOUSE,**  
Te Whare Kennels,  
142 ADELAIDE ROAD, WELLINGTON.  
Phone 24-397.

SEE  
**Clement Wragge's**  
LOVELY  
**TROPICAL GARDENS.**

"W A I A T A,"

BIRKENHEAD, AUCKLAND.

A South Sea Paradise, an Indian Jungle. Glorious Palms, Bananas in Actual Fruit, etc.

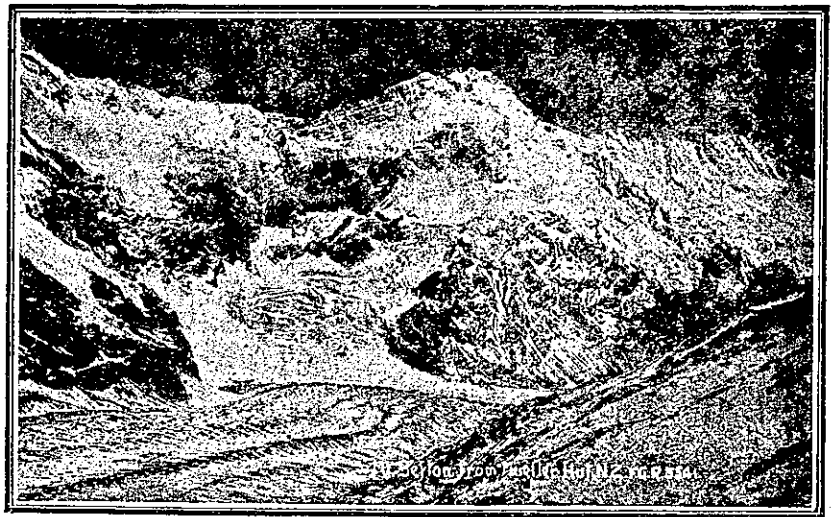
Also Wragge Institute, Museum, Art Gallery.  
Open Daily: 10 to 6. Admission, 1/1. Morning and Afternoon Tea obtainable. Telescope, Astronomical Evenings and Radium by Appointment. The Greatest Object Lesson in all the Dominion.

**Masonic Hotel . . . GISBORNE.**

THE LEADING COMMERCIAL HOTEL IN GISBORNE.

The above Hotel has been rebuilt, and is now open to guests. Visitors and travellers will find everything new, and can rely upon getting every comfort and attention. Best range of sample rooms in the Dominion.

E. GIBBS . . . . . Proprietor.



**MOUNT COOK,**

SEASON OPENS AT GREAT REDUCTION IN FARES FOR OCTOBER.

ALL PARTICULARS FROM—  
**THE MOUNT COOK MOTOR CO., LTD.,**  
TIMARU, FAIRLIE, AND QUEENSTOWN.

Agents: Government Tourist Department and Thos. Cook and Sons.

**Hinemoa Sanatorium, PARAKAI, — HELENSVILLE**

THE MOST UP-TO-DATE IN THE DOMINION.

There are 56 rooms available for guests. Swimming, plunge and shower baths on the premises. These baths are only used by guests. Electric light. Sanitary arrangements perfect. Motor cars and buses meet all trains. Adjacent to bowling and croquet lawns. Beautiful for situation, ideal for comfort.

TARIFF: THREE GUINEAS PER WEEK. 10/- PER DAY. BATHS INCLUDED.

**T. KEANE . . . . . PROPRIETOR.**

**Waikato Caves Hostel.**

Waikato, Rukuri, and Ararui Caves,

Reached by Daily Trains from Wellington or Auckland.

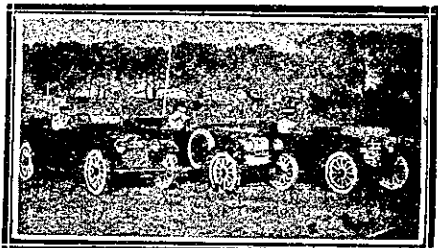
**THE Government Hostel** at Waikato is situated in a position from which the caves can be conveniently visited, and is connected by Telephone with the local Post and Telegraph Office.

**TARIFF**

Adults - 15s per Day.  
Single Meals 4s each.  
Children between the ages of three and 12 half rates.

Obtain your tickets from the Chief TOURIST BOOKING BUREAU Wellington, corner of Grey and Featherston Sts., opp. G.P.O. Auckland: Custom Street. NO EXTRA Charge for Booking.

**SNELLING AND ANDREWS Tourist Motor Garage, BROUGHAM ST., NEW PLYMOUTH.**



Headquarters of the North Egmont Mountain House Tourist Service, and New Plymouth - Opunake Mail Service.

We have Luxurious Touring Cars for hire day or night. During the summer months cars will leave Tourist Bureau for Mount Egmont on Tuesdays and Thursdays, at 9 a.m., also on Sundays. Only expert drivers employed. Cooks' Coupons accepted. Full particulars at

**SNELLING & ANDREWS - PROPS. GARAGE, BROUGHAM STREET.**