

THE TOURIST AND TRAVELLER. WHERE TO STAY AND WHERE TO GO.

MASTERTON.

TAUERU HOTEL,
MASTERTON.

JACK OLIVER Proprietor.
Every attention and civility to the travelling public. All wines and spirits of the very best. Hotel conducted under personal supervision of the proprietor.

WHERE TO STAY IN MASTERTON.

OCCIDENTAL HOTEL,
QUEEN STREET, MASTERTON.

First-class Accommodation. Tariff, 12/6 per day, £3 3s. per week.
Phone 1420.

D. K. KNOWLES Proprietor.

NAPIER.

CENTRAL HOTEL,
NAPIER.

Under New Management.
This recognised popular Hotel with the travelling public has been taken over by MR. P. BURNS, formerly of Wellington. Everything of the very best. Excellent cuisine. Phone 286.
P. BURNS Proprietor.

NAPIER HOTEL,
NAPIER.

P.O. Box 313. Phone 149.
ADJACENT TO MARINE PARADE.
Free House for Everything. Moderate Tariff.

ALEX. BAIN Proprietor.

PROVINCIAL HOTEL,
NAPIER.

THE LEADING COMMERCIAL HOTEL
IN NAPIER.

Now under New Management.
Central, commodious, comfortable.
Adjacent to Railway Station, Theatre and Marine Parade. The Provincial offers to Tourist and Travellers a Comfortable Hotel at a moderate tariff.

T. A. HEATH Proprietor.
(Late Assistant Manager Masonic Hotel)

ALBION HOTEL
NAPIER.

Renovated throughout, and offers excellent accommodation and the best of liquors. Tariff, from 8s. per day.

H. BARNETT Proprietor.

ARCADIA PRIVATE HOTEL
R. W. MOODY Proprietor.
NAPIER.

Within easy reach of Railway Station. Excellent accommodation for the travelling public. Tariff 10s. per day, £3 per week. Telephone 1570. Telegrams, "Arcadia."
(Seventeen years in Masonic Hotel.)

ONEHUNSA.

RAILWAY TERMINUS HOTEL,
ONEHUNSA.

Renovated and refurbished and extensive alterations. Everything of the best. A hearty welcome extended to visitors.
J. N. LYONS Proprietor.

OTAKI.

CENTRAL HOTEL,
OTAKI.

Most popular house of call in the town. All wines, spirits and ales true to label. Speight's Ale on draught. Tariff moderate. Ring Phone 3 for accommodation. P.O. Box 19.

J. D. HOWELL Proprietor.

RAILWAY HOTEL
OTAKI.

(Right opposite Railway Station.)
All trains stop sufficient time for refreshments. Nothing but the very best of spirits, ales, etc. Good table. Handy to racecourse.

JACK MCGILL Proprietor.
(Late of Hawke's Bay.)

TELEGRAPH HOTEL,
OTAKI.

This old-established popular house is now under the management of MR. C. J. WALTER, formerly of Wellington, who extends a welcome to the travelling public. All liquors, wines and spirits true to label. Everything of the very best. Phone 73.

C. J. WALTER Proprietor

OTAHUHU.

CRITERION HOTEL,
OTAHUHU.

FIRST-CLASS ACCOMMODATION AND ATTENTION.
Wines, Ales, and Spirits of the Highest Order.
N. CUNNINGHAM Proprietor.

OTIRA

TERMINUS HOTEL,
OTIRA.

E. PENHALLURIAK .. Proprietor.
(Late of Moana.)
Tourist and travellers will find First-class Accommodation and the Best of Ales, Wines and Spirits. Coach passengers have ample time to obtain refreshments.

PALMERSTON NORTH.

THE CLUB HOTEL,
PALMERSTON NORTH.

Stands on two acres of land; frontage 165ft.; promenade balcony; contains 60 bedrooms, private sitting-rooms and 12 sample rooms. The appointed house for the Association of N.Z. and Australian Commercial Travellers.
H. B. TUCKER,
Proprietor and Owner.

CAFE DE PARIS HOTEL,
PALMERSTON NORTH.

Right opposite Railway Station. All trains stop sufficient time for refreshments. Speight's ale and all wines and spirits true to label. Excellent accommodation.

P. J. PURCELL Proprietor.

NEW ROYAL HOTEL

Modern Brick Building; electric light throughout. Tariff, 9s. per day.
First-class Luncheon, 1s. 6d. Speight's Beer and Best of Wines and Spirits.
Box 203. Phone 94.

S. W. R. EVANS Proprietor.
(Late of Hastie's Hotel, Feilding.)

PANMURE.

PANMURE HOTEL,
PANMURE,
AND DYER'S HALL, PANMURE.

HENRY H. DYER Proprietor.
Wines and Spirits of the Best Brands only stocked. A hearty welcome always awaiting old friends and new faces.

PAHIATUA.

CLUB HOTEL,
PAHIATUA.

J. BYRNE Proprietor.
MOST COMFORTABLE HOSTELRY IN THE TOWN.
Everything of the very best. Tariff, 8/6 per day. Phone 21.

PATEA.

THE ALBION HOTEL,
PATEA.

First-class accommodation for tourists, families and travellers. Wines, Ales and Spirits of the Best.
J. A. COOGAN Proprietor.

PORT CHALMERS.

PORT CHALMERS HOTEL,
PORT CHALMERS.

RENOVATED AND REFURNISHED THROUGHOUT.
Now under the Proprietorship of G. A. LUONI.
(Late of Wellington.)

ROTORUA.

GRANDE VUE,
ROTORUA.

Situated centrally, with balconies overlooking the Beautiful Government Gardens, this House is without a rival in Rotorua.
The Government Bath Buildings, in the same grounds, are but two or three minutes' walk from the house, thus affording special bathing facilities to patrons.
GRANDE VUE has recently been taken over by MR. GEORGE BROWN, in conjunction with MRS. BENS; both for many years in charge of the Grand Hotel, Rotorua. Visitors to Rotorua can rely on finding their every comfort supplied at Grande Vue.
Tariff, 12s. 6d. per day.
Telegrams: "Grande Vue, Rotorua."

Thos. Cook and Son, Booking Agents.

RIVERTON.

WHERE TO STAY IN RIVERTON.
RAILWAY HOTEL,
Directly Opposite Railway Station.

Ideal Hotel for a holiday at the seaside. Everything of the very best.
CHAS. DE CLIFFORD .. Proprietor.

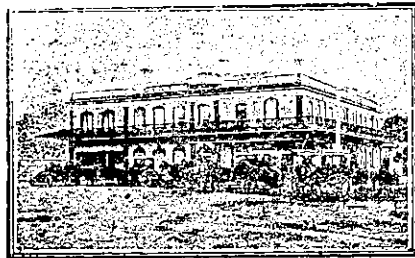
SHANNON.

ALBION HOTEL,
SHANNON.

The Popular house of call. New, commodious; electric light. Most up-to-date on the Manawatu line. First-class accommodation. Speight's Ale on draught. All wines and spirits true to label. A welcome to all. Tariff, 8s. per diem. Phone 14.

W. McKEGG Proprietor
(Late of Otaki.)

TAURANGA.



STAR HOTEL,
TAURANGA.

The Leading Commercial Hotel in the Bay of Plenty. Best accommodation. Excellent cuisine. Hot and cold baths. Telegrams: "Star, Tauranga." Phone 6. P.O. Box 21.

A. BROWN Proprietor.

TE POHUE.

LAKE HOTEL.

TE POHUE (on Main Napier-Taupo Rd) Splendid health resort. Excellent accommodation for tourists and travellers. Sportsmen's paradise. Capital shooting and fishing. Big bags always available. Everything of the very best. A hearty welcome to all.

R. TAKLE Proprietor.
(Formerly of Danavirke.)

TIMARU.

EXCELSIOR HOTEL,
TIMARU.

EXCELLENT ACCOMMODATION.
BEST WINES AND SPIRITS.
W. FORD Proprietor.

WAIHO FORKS HOTEL,
UNSURPASSED ACCOMMODATION AND ATTENTION.

B. TAVENDALE Proprietor.

WANGANUI.

FEDERAL HOTEL,
WANGANUI.

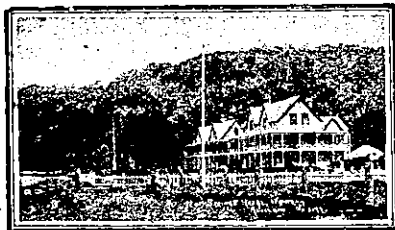
Ideal surroundings, facing Moutoa Gardens. Offers first-class accommodation to the travelling public. Moderate tariff. Now under the proprietorship of MR. E. DWYER.

WHERE TO STAY IN WANGANUI.
CHAVANNES HOTEL.

This popular house has been taken over by MR. H. OAKLEY BROWNE, well known in newspaper and political circles, and he extends a welcome to his many friends throughout New Zealand. Excellent table. Modern management. Phone 24.

H. OAKLEY BROWNE .. Proprietor

WAIWERA.



HOT SPRINGS HOTEL,
WAIWERA

(The Brighton of N.Z. The Leading Seaside Resort of the Dominion.)

On the Hauraki Gulf, 28 miles from Auckland by road or steamer. A First-class Seaside Hotel, with Modern Improvements. Excellent cuisine; electric light, motor garage; fishing, tennis, etc.; hot mineral swimming baths. Wines, spirits and bottled ales of the best. Under new management. Terms moderate.

T. JEPHCOATE Proprietor.

WELLINGTON.

IMPERIAL HOTEL,
CUBA STREET, WELLINGTON.

DIAMANTI AND PHILPS .. Proprs.
This popular hostelry, for years noted for the high quality of its liquors, has been taken over by MR. C. L. DIAMANTI (late of the Pier Hotel, Nelson) and MRS. I. PHILPS. A hearty welcome to all.

ALBION HOTEL
COURTENAY PLACE, WELLINGTON.

A. RAESIDE Proprietor.
(Late of Invercargill.)

This popular house of call, for years recognised for the splendid quality of its wines and spirits, has been taken over by MR. A. RAESIDE, who extends a hearty welcome to all.

WOODVILLE.

COMMERCIAL HOTEL,
WOODVILLE.

Right opposite Railway Station. Trains stop sufficient time for refreshments. Capital stable accommodation. All wines, spirits and ales true to label. Excellent accommodation for travellers.
CHARLIE C. KING Proprietor
(Late Police Department Napier and Palmerston North.)

JOPLIN, STALLARD & CARMICHAEL, Ltd.

Sharebrokers,

Auctioneers, Insurance, Land Estate, Commission & General Agents. Motor Car, Motor Cycle & Cycle Dealers. . . .

OXFORD ST. - - LEVIN.

PHONE 76.

27½ ACRES—Six-roomed house almost new; best locality, handy to town. Seven paddocks. An ideal small farm. Moderate price, good terms; £130 per acre. Going concern.

1051 ACRES GOOD LAND, near town. Now carrying 1100 sheep, 230 cattle. Well watered; new sheep and cattle yards. Two small cottages. £16 10s. per acre. Terms.

Most Fertile District in New Zealand.

LION ALE
LION ALE

IS THE CHOICEST PRODUCTION OF THE BREWER'S ART.

THE IDEAL BEER FOR AN IDEAL CLIMATE. BREWED UNDER IDEAL CONDITIONS FROM FINEST MATERIALS.

On Sale at all Hotels

THE LION BREWERY, Ltd.,
KHYBER PASS, AUCKLAND.

ARE YOU A MOTORIST?

Then You must read the N.Z. MOTOR & CYCLE JOURNAL. (Monthly.)

Published Monthly. Price, Sixpence.

Of all Newsagents and Booksellers.