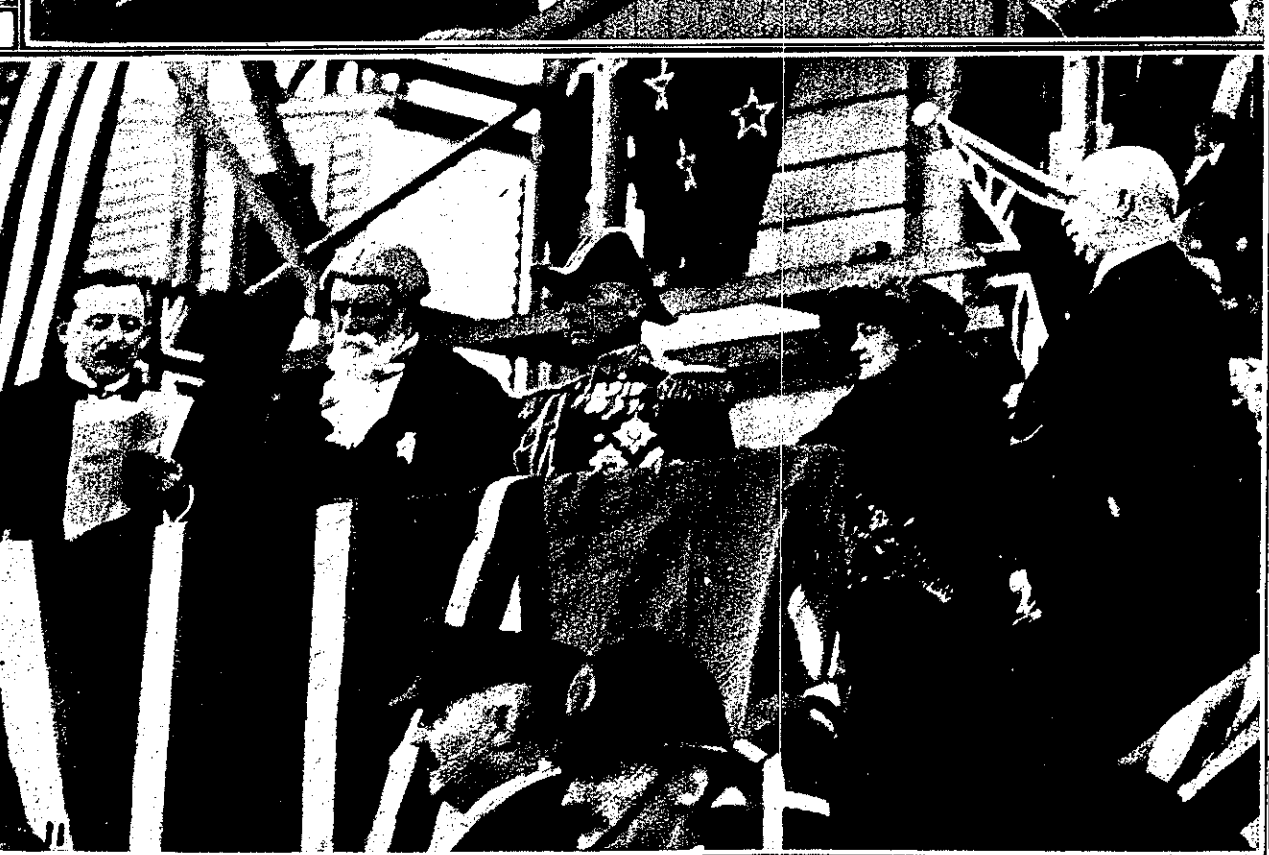
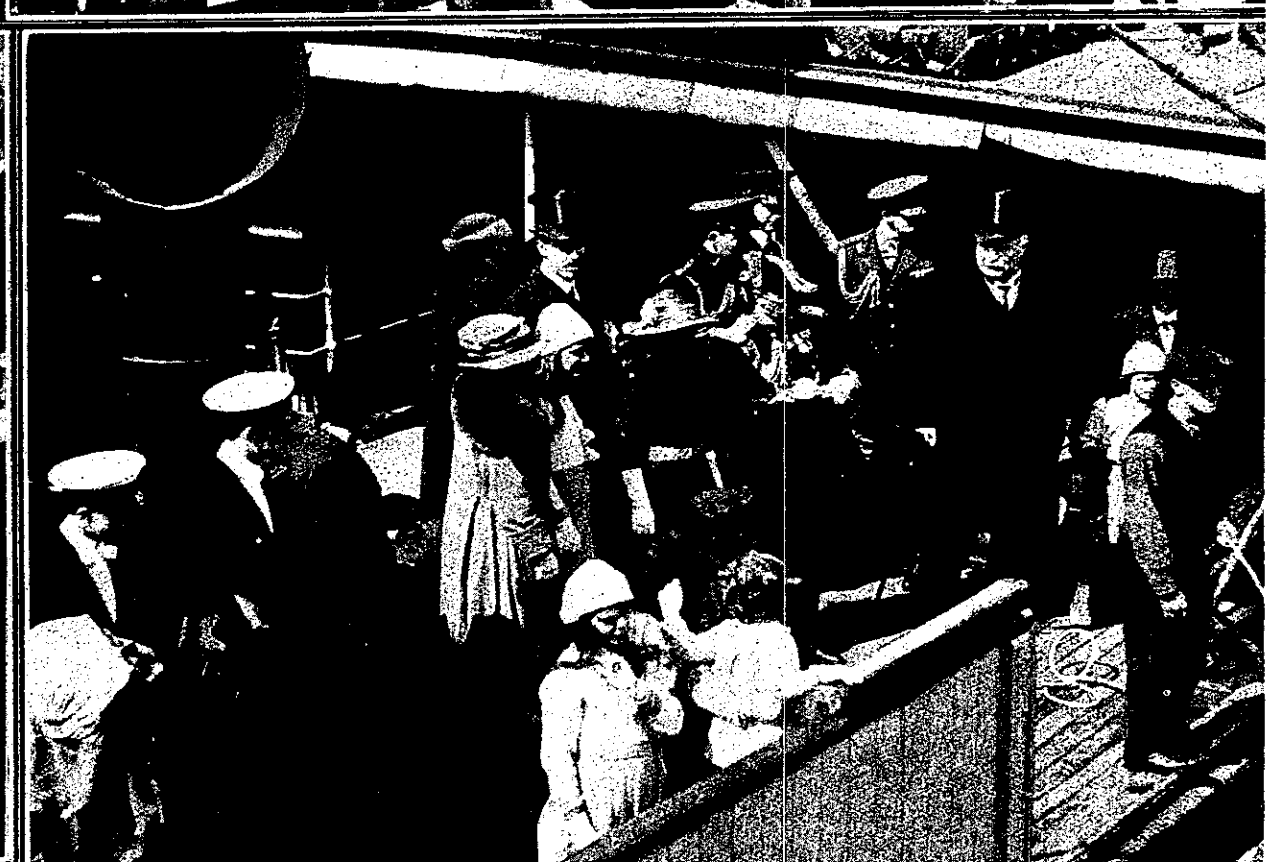


Arrives in Wellington to take up his New Office as Governor-General.



who paraded on the Queen's Wharf, Wellington, on the occasion of his landing. 8. LORD AND LADY JELlicOE AND FAMILY arrive at the Queen's Wharf, on board the ferry steamer Duchess, in company with the HON. W. F. MASSEY. 9. THE NEW GOVERNOR-GENERAL, VISCOUNT JELlicOE, REPLYING FROM THE DAIS ERECTED AT THE FOOT OF THE STEPS OF THE PARLIAMENTARY BUILDINGS TO THE PRIME MINISTER'S ADDRESS OF WELCOME. On his left is LADY JELlicOE and the PRIME MINISTER, while the CHIEF JUSTICE, SIR ROBERT STOUT, who administered the oaths of office and allegiance, is shown on the Governor-General's right. 10. VISCOUNT JELlicOE'S GENIAL SMILE. 11. MR. F. D. THOMSON, Clerk to the Executive Council, reading the King's Commission appointing Lord Jellicoe to be Governor-General of New Zealand in succession to Lord Liverpool. On the dais with Lord Jellicoe are Lady Jellicoe, Sir Robert Stout and the Hon. W. F. Massey.