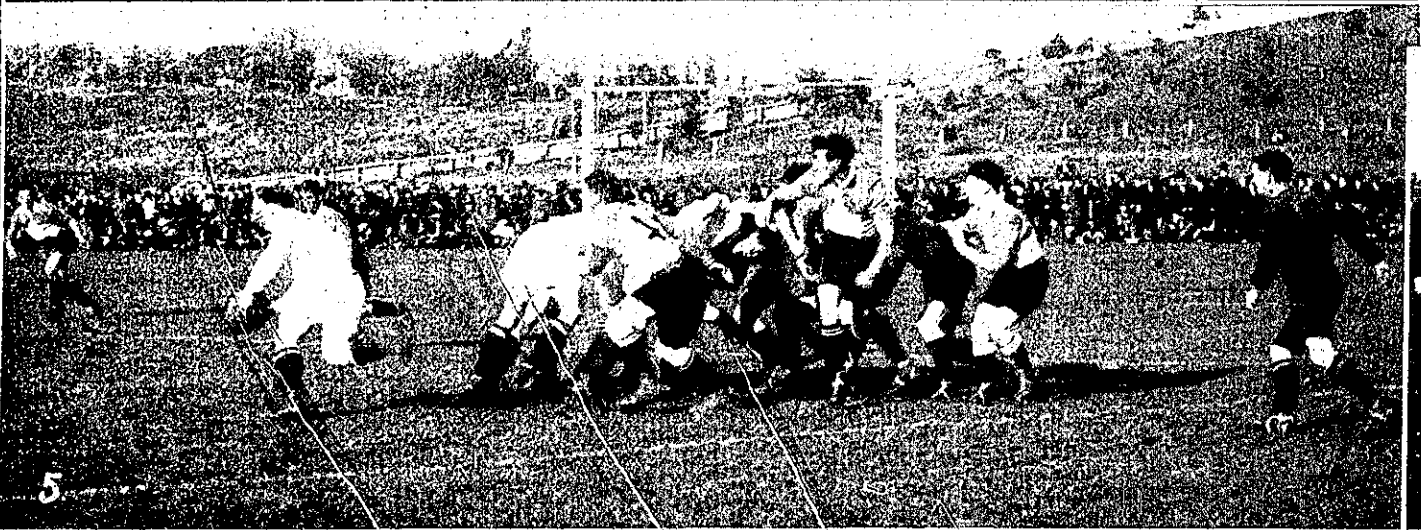


The English League Footballers open their New Zealand Tour at Auckland—Snapshots during the Match against



1. THE ENGLISH NORTHERN UNION TEAM WHICH PLAYED AUCKLAND ON SATURDAY—From left: A. Johnston, J. A. Bacon, D. Clarke, S. Stockwell, J. Cartwright, E. T. Skelhorne, J. Pa combe, W. Cunliffe, W. J. Stone, F. Gallagher, Gwyne Thomas (capt.). 2. C. POLSON, the Auckland half, sending the ball out to his backs. GALLAUGHER (England) is seen endeavouring to in McClymont, the Auckland five-eighths, has his progress stopped by J. PARKIN. 4. W. CLOKE and J. WILSON stopping a determined run by F. GALLAUGHER (England). 5. J. PARKIN, the b breaking away with one of his characteristic runs which were a feature of the second half of the match. 6. THE AUCKLAND LEAGUE REPRESENTATIVE TEAM, WHICH DEFEATED ENGLAN From left: Mr. W. Murray (referee), L. Farrant (line umpire), W. Cloke, N. Bass, W. Davidson, C. Woolley, S. Walters, H. Avery, J. Wilson, C. Polson, I. Stewart, W. Stormont, W. Somers, E. C. ley (line umpire).