

Four beautiful white swans have been donated to Palmerston North Borough by Mr. P. A. McHardy.

Mr. C. Burgess, of the Wellington branch of the firm of Messrs. Makower, McBeath, Ltd., has been transferred to an important position in the firm's Western Australian branch. Mr. Burgess left for Sydney, en route to Perth, by the Manuka.

Mr. O. W. H. Strettell, for many years auctioneer for the New Zealand Loan and Mercantile Agency Company Invercargill, was presented with a cheque for £600. Mr. Strettell was one of Southland's popular auctioneers as far back as 25 years ago. He has now retired.

Captain P. V. Storkey, V.C., writes from Sydney to his parents in Napier notifying that, after four and a half years at the war, he was successful recently in passing a further law examination, and that he hopes to be called to the Bar after the examinations in March next. He occupies the position of Associate to Sir Charles Wade, K.C.M.G., a Judge of the Supreme Court of New South Wales.

News has been received of the death at San Francisco, at the age of 68 years, of Mr. Robert Williamson, a well-known Dunedin pressman in the late seventies and early eighties. A little over 30 years ago he went to the United States, where he found employment as official stenographer in the Superior Courts, and was regarded as one of the most efficient notetakers in California. He was the inventor of a system of shorthand confined largely to curves, and the author of several books.

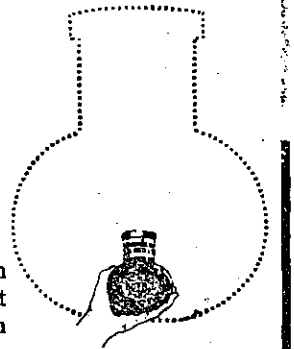
"Of course, England is showing the way to all of them," said Councillor C. B. Norwood, who has just returned to Wellington from a trip to America, England, and Europe. "No country I visited," he said, "is adjusting herself more rapidly to the new conditions born of the war than is England. She leads the way, and I am sure she will reach a stable period sooner than any of the other countries affected."

When the hotel proprietors of Hastings recently decided to raise the price of spirits from 6d. to 9d., one declined to enter the "ring." Sticking to the old price he did a roaring trade, while the others lacked customers. It is now reported that the members of the "ring" are one by one reverting to the old price.

As a recognition of the City of London's appreciation of the war services of the Mercantile Marine, the banquet of the Chamber of Shipping of the United Kingdom was recently held at the Guildhall for the first time in history with full civic ceremony. Sir Joseph Maclay, speaking of the wonderful war record of the mercantile marine, said the nation was greatly indebted to the great shipping organisations. The story of the mercantile marine was a romance, and he hoped someone with the necessary genius would some day write it. There were no doubt difficult days ahead, with the marvellous development of America, and the great possibilities of Japan, but with a fair field and no favour the British shipowner would always hold his own, and his flag would continue to wave in every sea and every port. Lord Inchcape said the war against Germany was over; the war against Prussianism at home, whether in the form of bureaucrats who thought they had a providential mission to turn their business or in the form of revolutionaries, who thought they could incite the great, kindly and sensible of our working people to "hold up" Britain, as Germany tried to "hold up" Europe, was little more than begun. We had shown during the last five years we could beat the peril from without; we had now to show that we could confront the peril from within with equal power and resolution. (Cheers.)

WRAGGE'S WEATHER BUREAU INSTITUTE AND WAIATA GARDENS, BIRKENHEAD, AUCKLAND.—Farmers, Pastoralists, Sportsmen ASK CLEMENT WRAGGE about the Weather and Coming Seasons. Six months' forecast and best advice, 7/6; twelve ditto, 12/6. For Extra Specials enquire.

# Take this Power in your hand



Pick up any Bovril bottle from the store counter, and let it rest on the palm of your hand. Then picture to yourself another bottle ten to twenty times as big.

**That larger bottle would correspond to the proven Body-building Power of the Bovril actually in your hand.**

# BOVRIL

The Genuine Original British Product.

IF IN SEARCH OF HEALTH

Consult

**Mrs. E. Tollerton**

CONSULTING HERBALIST,  
115, KARANGAHAPE ROAD,  
NEWTON, AUCKLAND.

ALL REMEDIES MADE FROM PURE FRESH HERBS.

Consultations Daily.

Masseuse and Magnetic Healer. Do not Suffer, but Use Nature's Remedies.

CORRESPONDENCE INVITED.

## Waitomo Caves Hostel.

Waitomo, Ruakuri, and Aranui Caves,

Reached by Daily Train from Wellington or Auckland.

THE Government Hostel at Waitomo is situated in a position from which the caves can be conveniently visited, and is connected by Telephone with the local Post and Telegraph Office.

TARIFF

Adults - 10s per Day.  
Single Meals 2s 6d each.  
Children between the ages of three and 12 half rates.

Obtain your tickets from the Govt. TOURIST BOOKING BUREAU Wellington, corner of Grey and Featherston Sts., opp. G.P.O. Auckland: Custom Street. NO EXTRA Charge for Booking.

THE VICTORIA DRY CLEANING CO. Longley's Special Process of Dry Cleaning adds seasons to the life of an overcoat or a suit of clothes. Therefore, a small expenditure with Longley often saves a larger one with a tailor. Overcoats, Suits, Etc., Ladies, Costumes and Similar Articles of Wearing Apparel should be sent to LONGLEY, 60 Victoria St., West 'Phone 2161A.

## Masonic Hotel . . . GISBORNE.

THE LEADING COMMERCIAL HOTEL IN GISBORNE.

The above Hotel has been rebuilt, and is now open to guests. Visitors and travellers will find everything new, and can rely upon getting every comfort and attention. Best range of sample rooms in the Dominion.

E. GIBBS . . . . . Proprietor.

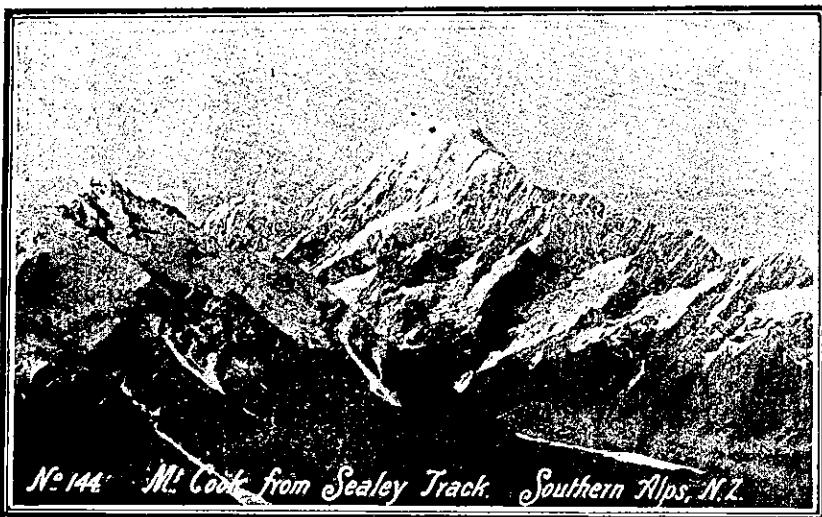
## Visitors to Wanganui.

## HOTEL BRAEBURN, Anzac Parade, WANGANUI,

Is Replete with every Modern Convenience, and Recognised as one of the Leading Private Hotels in the Dominion. Magnificent Views from the balcony of River, Sea and Countryside.

An Ideal Holiday Home. Motor Garage, Croquet Lawn, Electric Light. Four Minutes from Train and Steamer

[P. W. Douglas 'Phone 898A] DOUGLAS AND CO., HOUSE, LAND & ESTATE AGENTS. GEORGE TUCKER . . . Representative DOUGLAS AND CO., ALL THE TIME AUCTIONEERS AND LAND SALESMEN. VICTORIA ST. EAST, AUCKLAND.



## MOUNT COOK, The Place for a Holiday

ALL PARTICULARS FROM— THE MOUNT COOK MOTOR CO., LTD., TIMARU, FAIRLIE, AND QUEENSTOWN.

Agents: Government Tourist Department and Thos. Cook and Sons.

## TE WHARE KENNELS.

The Home of High-class Pekingese and Miniature Pomeranians.



Te Whare Golden Meteor, by Remuera Gold. Weight, 15 3/4 ozs. POMERANIANS AT STUD. Remuera Gold (imp.), £4 4s.; Remuera Masterpiece (orange), £3 3s.; Remuera Sunstar (orange), £3 3s.; Te Whare Kismet (orange), £3 3s.; Te Whare Sunshine Gold (orange), £3 3s.; Te Whare Goldfire (orange), £3 3s. PEKINGESE AT STUD. Mah Kong of Te Whare.—The latest imported red 8lb. dog. The best bred Pekingese Stud. Dog in Australasia. Fee, £5 5s. Lu Ti of Te Whare (sable), one of the best N.Z. bred dogs. A real sensation. Fee, £5 5s.

PUPPIES ALWAYS FOR SALE. MRS. F. HOUSE, Te Whare Kennels, 142 ADELAIDE ROAD, WELLINGTON. 'Phone 24-397.

## NAPIER (THE BRIGHTON OF NEW ZEALAND.

—STARTING POINT FOR—

## LAKE TAUPO (Hot Lake District)

NAMED THE ANGLERS' PARADISE 8 HOURS MOTOR FROM NAPIER.

Napier to Taupo is undoubtedly one of the most interesting and romantic scenic routes in the Southern Hemisphere, and for rugged mountain landscape is unsurpassed.

A motor car leaves Napier on Thursday at 8 a.m., lunching at Tarawera, arriving Taupo 4 p.m. Taupo depart Friday 8 a.m., Tarawera noon, arrive Napier at 4 p.m. Motor service 1st December to 30th April. The mail coach leaves Napier on Monday 6.30 a.m., staying at Tarawera overnight, reaching Taupo about 4 p.m. Taupo depart Wednesday 7 a.m., arrive Napier Thursday, about 4 o'clock, December 1st to April 30th. May 1st to November 30th coach leaves Taupo Thursday.

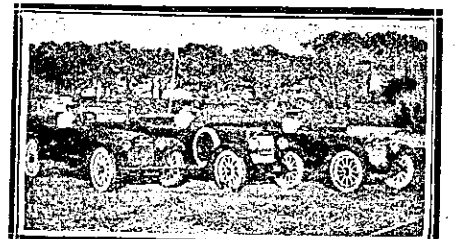
Fares per coach, Napier to Taupo, Single, £2 10s.; Return, £4. Fares per motor car, Napier to Taupo, Single £3 10s.; Return, £6. Full particulars at Government Tourist and T. Cook and Sons.

H.B. MOTOR COMPANY, LIMITED, PROPRIETORS, NAPIER.

## SEE CLEMENT WRAGGE'S LOVELY TROPICAL GARDENS.

"W A I A T A," BIRKENHEAD, AUCKLAND. A South Sea Paradise, an Indian Jungle. Glorious Palms, Bananas in Actual Fruit, etc. Also Wragge Institute, Museum, Art Gallery. Open Daily: 10 to 6. Admission, 1/1. Morning and Afternoon Tea obtainable. Telescope, Astronomical Evenings and Radium by Appointment. The Greatest Object Lesson in all the Dominion. SNELLING AND ANDREWS

## Tourist Motor Garage, BROUGHAM ST., NEW PLYMOUTH.



Headquarters of the North Egmont Mountain House Tourist Service, and New Plymouth-Opunake Mail Service. We have Luxurious Touring Cars for hire day or night. During the summer months cars will leave Tourist Bureau for Mount Egmont on Tuesdays and Thursdays, at 9 a.m., also on Sundays. Only expert drivers employed. Cooks' Coupons accepted. Full particulars at GARAGE, BROUGHAM STREET. SNELLING & ANDREWS - PROPRS