

THE TOURIST AND TRAVELLER. WHERE TO STAY AND WHERE TO GO.

MASTERTON.

TAUERU HOTEL, MASTERTON. JACK OLIVER Proprietor. Every attention and civility to the travelling public.

MARTINBOROUGH.

MARTINBOROUGH HOTEL, MARTINBOROUGH. This up-to-date hotel offers all the comforts of a first-class home.

NAPIER.

NAPIER HOTEL, NAPIER. P.O. Box 313. Phone 149. ADJACENT TO MARINE PARADE.

PROVINCIAL HOTEL, NAPIER.

THE LEADING COMMERCIAL HOTEL IN NAPIER. Now under New Management.

Central, Commodious, Comfortable. Adjacent to Railway Station, Theatre and Marine Parade.

T. A. HEATH Proprietor. (Late Assistant Manager Masonic Hotel.)

ALBION HOTEL, NAPIER.

Renovated throughout, and offers excellent accommodation and the best of liquors. Tariff, from 8s. per day.

NELSON.

PROVINCIAL HOTEL, BRIDGE STREET, NELSON.

J. J. F. J. BAXTER Proprietor. This Popular Hostelry has been taken over by Mr. Baxter, long and well known to the travelling public.

NEW PLYMOUTH.

WHITE HART HOTEL, NEW PLYMOUTH, N.Z.

Leading Commercial and Tourist House. H. S. BROOKMAN Proprietor.

OAMARU.

NORTHERN PRIVATE HOTEL, OAMARU.

Corner Tyne and Wansbeck Streets, OAMARU. Now under the proprietorship of Mrs. Harvey.

ONEHUNGA.

RAILWAY TERMINUS HOTEL, ONEHUNGA.

Renovated and furnished and extensive alterations. Everything of the best. A hearty welcome extended to visitors.

OTAHUHU.

CRITERION HOTEL, OTAHUHU.

FIRST-CLASS ACCOMMODATION AND ATTENTION. Wines, Ales, and Spirits of the Highest Order.

OTAKI.

CENTRAL HOTEL, OTAKI.

Most popular house of call in the town. All wines, spirits and ales true to label.

OTIRA.

TERMINUS HOTEL, OTIRA. E. PENHALLURIAK Proprietor. Tourist and travellers will find First-class Accommodation and the Best of Ales, Wines and Spirits.

PALMERSTON NORTH.

CAFE DE PARIS HOTEL, PALMERSTON NORTH. Right opposite Railway Station. All trains stop sufficient time for refreshments.

NEW ROYAL HOTEL

Modern Brick Building; electric light throughout. Tariff, 9s. per day. First-class Luncheon, 1s. 6d.

THE CLUB HOTEL, PALMERSTON NORTH.

Stands on two acres of land; frontage 165ft.; promenade balcony; contains 60 bedrooms, private sitting-rooms and 12 sample rooms.

PANMURE.

PANMURE HOTEL, PANMURE, AND DYER'S HALL, PANMURE. HENRY H. DYER Proprietor. Wines and Spirits of the Best Brands only stocked.

PATEA.

THE ALBION HOTEL, PATEA. First-class accommodation for tourists, families and travellers. Wines, Ales and Spirits of the Best.

PORT CHALMERS.

PORT CHALMERS HOTEL, PORT CHALMERS. RENOVATED AND REFURNISHED THROUGHOUT. Now under the Proprietorship of G. A. LUONI.

RANFURLY.

RANFURLY HOTEL, RANFURLY. Excellent accommodation for travellers. Centre of Manapoto Plains. Trains stop 20 minutes for lunch.

RIVERTON.

WHERE TO STAY IN RIVERTON. RAILWAY HOTEL, Directly Opposite Railway Station. Ideal Hotel for a holiday at the sea side.

ROTORUA.

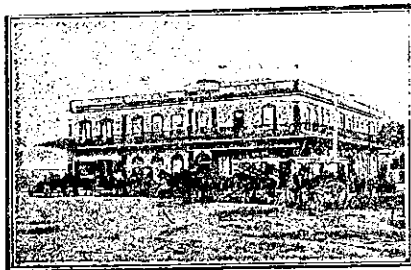
GRANDE VUE, ROTORUA. Situated centrally, with balconies overlooking the Beautiful Government Gardens, this House is without a rival in Rotorua.

GRANDE VUE has recently been taken over by MR. GEORGE BROWN, in conjunction with MRS. REES; both for many years in charge of the Grand Hotel, Rotorua.

SHANNON.

ALBION HOTEL, SHANNON. The Popular house of call. New, commodious; electric light. Most up-to-date on the Manawatu line.

TAURANGA.



STAR HOTEL, TAURANGA.

The Leading Commercial Hotel in the Bay of Plenty. Best accommodation. Excellent cuisine. Hot and cold baths.

TE POHUE.

LAKE HOTEL, TE POHUE (on Main Napier-Taupo Rd) Splendid health resort. Excellent accommodation for tourists and travellers.

TIMARU.

EXCELSIOR HOTEL, TIMARU. EXCELLENT ACCOMMODATION. BEST WINES AND SPIRITS. W. FORD Proprietor.

WAIHO FORKS HOTEL. UNSURPASSED ACCOMMODATION AND ATTENTION. B. TAVENDALE Proprietor.

WAIWERA.



HOT SPRINGS HOTEL, WAIWERA (The Brighton of N.Z. The Leading Seaside Resort of the Dominion).

On the Hauraki Gulf, 28 miles from Auckland by road or steamer. A First-class Seaside Hotel, with Modern Improvements.

WANGANUI.

FEDERAL HOTEL, WANGANUI. Ideal surroundings, facing Moutoa Gardens. Offers first-class accommodation to the travelling public.

ALBION HOTEL, WANGANUI. Under entirely new management. First-class accommodation, ales, wines and spirits.

WOODVILLE.

COMMERCIAL HOTEL, WOODVILLE. Right opposite Railway Station. Trains stop sufficient time for refreshments.

Printed and Published by ARTHUR CLEAVE, of Ellerslie, at his Registered Printing Office, Vulcan Lane, Auckland, for the Proprietors, Arthur Cleave and Co., Ltd. THURSDAY, JULY 22, 1920.

Drink Peerless ALE. Made from Pure Malt and Hops. Naturally Matured. For Purity and Quality Unexcelled INVALID STOUT A SPECIALTY O. L. INNES & CO LIMITED, HAMILTON. Brewers, Bottlers and Aerated Water Manufacturers.

LION ALE LION ALE IS THE CHOICEST PRODUCTION OF THE BREWER'S ART. THE IDEAL BEER FOR AN IDEAL CLIMATE. BREWED UNDER IDEAL CONDITIONS FROM PUREST MATERIALS. On Sale at all Hotels THE LION BREWERY, Ltd., KHYBER PASS, AUCKLAND.

CLEAVE'S COMMERCIAL, MUNICIPAL AND GENERAL DIRECTORY, 1920. THIRTY-SECOND YEAR OF PUBLICATION. New and Enlarged Maps of CITY OF AUCKLAND, GISBORNE AND THAMES. PRICE, 20s. POSTED, 21s.

THE AUCKLAND SAFE DEPOSIT. Corner of High Street & Vulcan Lane, AUCKLAND. An Absolutely Secure Place for the safekeeping of Debentures and other valuable and important documents; also Jewels, Plate, etc. An Impregnable Stronghold, containing separate and distinct Safes, of various sizes, but with no two keys of the same pattern. Protected by Huge Doors of Steel, controlled by Automatic Time Locks. Constructed by the Celebrated "Millers' Safe Co., Ltd., of London and Liverpool. Absolutely Unassailable by Fire. Absolutely Burglar-proof.