

A company is about to be formed with the object of establishing an up-to-date hotel in Masterton.

Mr. T. M. Wilford, M.P. for Hutt, returned by the Tofua last week after a visit to America.

There is at least one family in Wanganui which has attempted to solve the housing problem and has met with a fair amount of success. Tired of the everlasting search for rented houses the family, the head of which is a railway employee, has now found accommodation in two Public Works Department huts on the waterfront in an unused portion of the railway station yard.

The United States Shipping Board claims that "America is now the premier shipbuilding nation of the world," and that to-day the United States has "more shipworkers, shipyards, slipways, and vessels under construction" than any other country. It is stated, that whereas in 1914 the States had only 15 vessels 1000 tons and over engaged in overseas trade, to-day the American flag is flown by 1280 ocean going steamships.

"There are shipbuilding yards from Halifax to Prince Rupert, and Canada's shipbuilding programme is young," said the Canadian Minister of Marine recently, adding: "A great deal of credit is due to Canadian shipbuilders for having risen to the occasion so well when the Government asked them to undertake steel shipbuilding." It is interesting to note that the capital invested in Canadian shipyards to-day amounts to 47 million dollars. What pleases people in Canada is that the ships are very largely built of native materials, and that Canadian shipyards can compete with almost anybody.

Evidence of the remarkable popularity of the League football game in New South Wales and Queensland is furnished by the fact that the five principal matches played in Sydney and Brisbane respectively by the English Northern Union team, which is at present in Auckland, were witnessed by attendances totalling 290,000. Details of the attendances at the five matches in question are as follows:—England v. Metropolis (Sydney), 70,000; England v. N.S.W. (first match, Sydney), 60,000; England v. N.S.W. (second match, Sydney), 70,000; England v. Australia (first test, Brisbane), 30,000; England v. Australia (second test, Sydney), 60,000.

Admiral Earl Beatty warmly defended the capital ship at a luncheon in Glasgow, when the freedom of the city was recently conferred upon him. He declared that the Fleet in commission to-day represented the minimum compatible with British superiority and supremacy of the seas. There were critics who said we must have ships which could disappear under the surface one minute and be lost in the clouds the next. He dared say those critics were right, but the time for such ships was not yet, and he disagreed with the statement that the day of the capital ship had passed. The capital ship was still the unit upon which the sea power of the Empire was built. Nothing had been devised by the critics to take its place. Scientific research was being pushed forward, and general all-round efficiency was being maintained.

Lloyd's shipping summary for 1919 shows that Canada now stands fourth among the shipbuilding countries of the world, following Japan, which comes after Great Britain and the United States. The total tonnage for the British overseas Dominions was 378,728 tons, out of which there were launched in Canada 271,264 tons, including more than 150,000 tons of steel steamers. Holland was the only other country which launched over 100,000 tons.

Carter, the Mysterious, when in the East devoted a good deal of time to the investigation of the so-called marvellous tricks of the Hindu fakirs. He was particularly interested in the "mango trick" that he saw performed in Delhi, India. "The trick is very simple," he said, "you just plant a seed in the earth, water it, cover it with a cloth, and, removing the cloth, reveal a little mango tree or bush. But the fakir I saw had a new wrinkle. You could see the tree grow, pushing up the cloth conewise as he played on a squealing pipe he took from the pouch at his side. I made him do it twice. Then I caught on. After planting the seed and then showing a tiny sprout, inserted cleverly as he withdrew the cloth the first time, he slipped under the cloth as he replaced it a dormant cobra, which he took from his pouch. The music of the pipes has a peculiar effect on the cobra. It makes him stand up on his tail and wave about. That gave the appearance of the tree growing. Of course, the rest was merely sleight of hand—whisking the cobra back into the bag, and the tree out, and sticking it into the ground, all the while withdrawing the cloth. But the cobra as a 'prop.'? No, thanks," said Carter, "I prefer lions."

CHRISTCHURCH GUN CLUB.

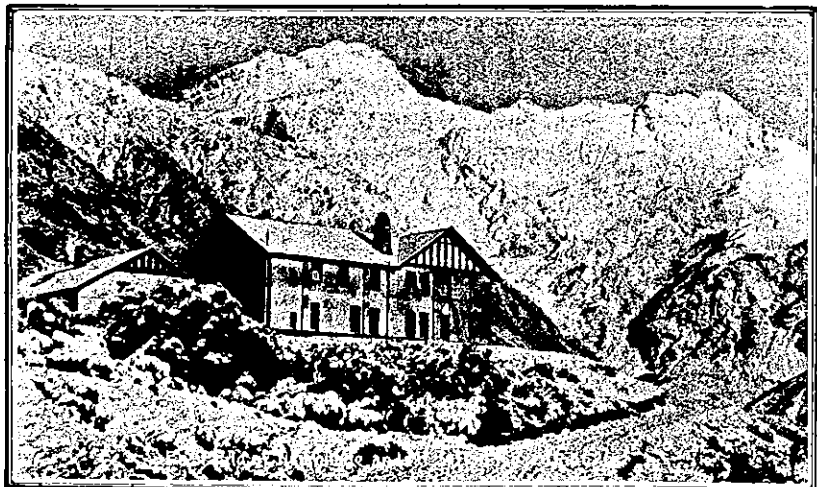
£150 GRAND NATIONAL LIVE PIGEON HANDICAP. Will be held on the Club's Grounds on MONDAY, AUGUST 9, 1920. (The day before the Grand National Steeplechase.) Commencing at 9 a.m.

CONDITIONS: Fourteen birds. Single nomination £7 10s., double nomination £10. Two misses out on first nomination, one miss out on second nomination. Star £1 10s. on first bird in each nomination; 35 yards boundary. First Prize, £100; Second, £30; Third, £20. To be shot under the rules of the N.Z. Gun Clubs Association, and open to financial members of affiliated Clubs only.

NOMINATIONS close with the Secretary, Christchurch Gun Club, on SATURDAY, AUGUST 7, at 8 p.m. The Committee reserve the right to refuse any nomination. Handicapper and Referee: L. A. Shand.

D. F. DENNEHY, Hon. Secretary, Christchurch. P.O. Box 553, Phone 592. Note.—The North Canterbury Gun Club will hold a £100 Live Pigeon Handicap on Thursday, August 6, and a Sweepstake for the Championship of New Zealand on Friday, August 7; and the Springton Gun Club have arranged a £50 Live Pigeon Match for August 7. These matches will enable shooters to get into form for the Grand National Handicap on Monday, August 9.

WRAGGE'S WEATHER BUREAU INSTITUTE AND WAIATA GARDENS, BIRKENHEAD, AUCKLAND.—Farmers, Pastoralists, Sportsmen ASK CLEMENT WRAGGE about the Weather and Coming Seasons. Six months' forecast and best advice, 7/6; twelve ditto, 12/6. For Extra Specials enquire.



MOUNT COOK, The Place for a Holiday

ALL PARTICULARS FROM— THE MOUNT COOK MOTOR CO., LTD., TIMARU, FAIRLIE, AND QUEENSTOWN.

Agents: Government Tourist Department and Thos. Cook and Sons.

IF IN SEARCH OF HEALTH

Consult

Mrs. E. Tollerton

CONSULTING HERBALIST, 115, KARANGAHAPE ROAD, NEWTON, AUCKLAND.

ALL REMEDIES MADE FROM PURE FRESH HERBS.

Consultations Daily.

Masseur and Magnetic Healer. Do not Suffer, but Use Nature's Remedies.

CORRESPONDENCE INVITED.

THE VICTORIA DRY CLEANING CO.

Longley's Special Process of Dry Cleaning adds seasons to the life of an overcoat or a suit of clothes. Therefore, a small expenditure with Longley often saves a larger one with a tailor. Overcoats, Suits, Etc., Ladies, Costumes and Similar Articles of Wearing Apparel should be sent to

LONGLEY, 60 Victoria St., West Phone 2161A.

Masonic Hotel

GISBORNE.

THE LEADING COMMERCIAL HOTEL IN GISBORNE.

The above Hotel has been rebuilt, and is now open to guests. Visitors and travellers will find everything new, and can rely upon getting every comfort and attention. Best range of sample rooms in the Dominion.

E. GIBBS Proprietor.

Visitors to Wanganui.

HOTEL BRAEBURN, Anzac Parade, WANGANUI.

Is Replete with every Modern Convenience, and Recognised as one of the Leading Private Hotels in the Dominion. Magnificent Views from the balcony of River, Sea and Countryside.

An Ideal Holiday Home. Motor Garage, Croquet Lawn, Electric Light. Four Minutes from Train and Steamer

TE WHARE KENNELS.

The Home of High-class Pekingese and Miniature Pomeranians.



Te Whare Golden Meteor, by Remuera Gold. Weight, 15 1/2 ozs.

POMERANIANS AT STUD. Remuera Gold (imp.), £4 4s.; Remuera Masterpiece (orange), £3 3s.; Remuera Sunstar (orange), £3 3s.; Te Whare Kismet (orange), £3 3s.; Te Whare Sunshine Gold (orange), £3 3s.; Te Whare Goldfire (orange), £3 3s.

PEKINGESE AT STUD. Mah Kong of Te Whare.—The latest imported red Sib. dog. The best bred Pekingese Stud Dog in Australasia. Fee, £5 5s. Lu Ti of Te Whare (sable), one of the best N.Z. bred dogs. A real sensation. Fee, £5 5s.

PUPPIES ALWAYS FOR SALE. MRS. F. HOUSE, Te Whare Kennels, 142 ADELAIDE ROAD, WELLINGTON. Phone 24-397.

[P. W. Douglas Phone 898A]

DOUGLAS AND CO., HOUSE, LAND & ESTATE AGENTS. GEORGE TUCKER ... Representative

DOUGLAS AND CO., ALL THE TIME AUCTIONEERS AND LAND SALESMEN, VICTORIA ST. EAST, AUCKLAND.

Waitomo Caves Hostel.

Waitomo, Ruakuri, and Aranui Caves,

Reached by Daily Train from Wellington or Auckland.

THE Government Hostel at Waitomo is situated in a position from which the caves can be conveniently visited, and is connected by Telephone with the local Post and Telegraph Office.

TARIFF

Adults - 10s per Day. Single Meals 2s 6d each. Children between the ages of three and 12 half rates.

Obtain your tickets from the Govt. TOURIST BOOKING BUREAUX Wellington, corner of Grey and Featherston Sts., opp. G.P.O. Auckland: Custom Street. NO EXTRA Charge for Booking.

NAPIER (THE BRIGHTON OF NEW ZEALAND.

STARTING POINT FOR

LAKE TAUPO

(Hot Lake District) NAMED THE ANGLERS' PARADISE 8 HOURS MOTOR FROM NAPIER.

Napier to Taupo is undoubtedly one of the most interesting and romantic scenic routes in the Southern Hemisphere, and for rugged mountain landscape is unsurpassed.

A motor car leaves Napier on Thursday at 8 a.m., lunching at Tarawera, arriving Taupo 4 p.m. Taupo depart Friday 8 a.m., Tarawera noon, arrive Napier at 4 p.m. Motor service 1st December to 30th April.

The mail coach leaves Napier on Monday 6.30 a.m., staying at Tarawera overnight, reaching Taupo about 4 p.m. Taupo depart Wednesday 7 a.m., arrive Napier Thursday, about 4 o'clock, December 1st to April 30th. May 1st to November 30th coach leaves Taupo Thursday.

Fares per coach, Napier to Taupo, Single, £2 10s.; Return, £4. Fares per motor car, Napier to Taupo, Single £3 10s.; Return, £6. Full particulars at Government Tourist and T. Cook and Sons.

H.B. MOTOR COMPANY, LIMITED, PROPRIETORS, NAPIER.

SEE

Clement Wragge's TROPICAL GARDENS.

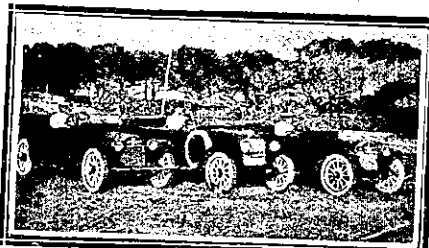
LOVELY

"W A I A T A," BIRKENHEAD, AUCKLAND.

A South Sea Paradise, an Indian Jungle. Glorious Palms, Bananas in Actual Fruit, etc. Also Wragge Institute, Museum, Art Gallery.

Open Daily: 10 to 6. Admission, 1/1. Morning and Afternoon Tea obtainable. Telescope, Astronomical Evenings and Radium by Appointment. The Greatest Object Lesson in all the Dominion. SNELLING AND ANDREWS

Tourist Motor Garage, BROUGHAM ST., NEW PLYMOUTH.



Headquarters of the North Egmont Mountain House Tourist Service. and New Plymouth - Opunake Mail Service.

We have Luxurious Touring Cars for hire day or night. During the summer months cars will leave Tourist Bureau for Mount Egmont on Tuesdays and Thursdays, at 9 a.m., also on Sundays. Only expert drivers employed. Cooks' Coupons accepted. Full particulars at GARAGE, BROUGHAM STREET.

SNELLING & ANDREWS - PROPRS