

It is reported that a Manawatu farmer last week purchased a draught horse for £22 10s. He bought a canvas cover for it, gave the animal three feeds of chaff, and then sold it for £45.

An appropriate function in connection with the visit to Greymouth of General Sir William Birdwood was the presentation to him of a dish of alluvial gold, the production of the mines of the West Coast. The dish contained 12oz. of fine gold. In making the presentation, the Mayor (Mr. J. D. Lynch) stated that the idea was that each speck should represent a unit of the population of Greymouth, who had subscribed the money. He desired that the gold should be manufactured into an article which would serve to remind General Birdwood of the "golden sentiment" of the people of the West Coast towards him.

"The cost of living is undoubtedly high, but even so compares favourably with other parts of the globe, and I think it would be well to recognise that there is little chance of improvement until the curriculum of all mercantile transactions approaches normal," said the Earl of Liverpool, Governor-General, speaking at the Town Hall, Wellington. "Up to now the principal difficulty has been in respect to shipping, but this position is undoubtedly easier. The markets of the world, as never before, are clamouring for replenishment, and success will go to those countries which prove most industrious in this race for competition. We must not fail to take full advantage of our opportunities, otherwise it will be very difficult to regain our position when once it is lost. We have found out that one of the greatest difficulties which had to be met during the war was the fact that we depended too much on foreign countries for our food supplies and essential every-day requisites. If we are to profit by our experience, we should make certain that steps are taken to make our Empire as self-contained as it is possible to be in respect to such commodities. It cannot be done without strenuous efforts on the part of the whole community, but the prize is worth any sacrifice, and the task not too difficult." (Applause.)

In the course of a strong appeal for the support of British trade, Mr. R. W. Dalton, British Trade Commissioner, during an address at Palmerston North, was interrupted by somebody who asked "What about the profiteer?" Mr. Dalton replied, "You tell me what a profiteer is, and I will be prepared to argue with you. I urge you to support British industry, and in doing so, I state positively that Britain is supplying goods for export at the least possible price commensurate with the carrying on of the business of the manufacturers." (Applause.)

The Prince has endeared himself to the Australian people because of his fondness for racing, says a correspondent. He spent quite a part of his "week off" among the horses, and had ups and downs in the betting ring. On his last day at Flemington he started well. He backed the winner of the first race at 3 to 1. He was leaving the members' stand (he would not go near the Royal box) after the race, when a returned soldier friend asked him, "Did you back that one, Prince?" "Yes," said His Highness, cheerfully, "I had two quid on him." The "quid," instead of "pounds," was a little unconscious touch that delighted the crowd. The bookmaker paid him in gold. He stared, and then remarked with a twinkle that "it was a long time since he had seen a sovereign." In the next race he also found the winner, at £15 to £45. In the following races his luck deserted him, and he departed a loser. But he appeared to be in a merry mood. Several times the returned soldiers called tips to him as he stood near the betting ring; and he always acknowledged the attention by courteously raising his hat.

WRAGGE'S WEATHER BUREAU
INSTITUTE AND WAIATA GARDENS, BIRKENHEAD, AUCKLAND.—Farmers, Pastoralists, Sportsmen ASK CLEMENT WRAGGE about the Weather and Coming Seasons. Six months' forecast and best advice, 7/6; twelve ditto, 12/6. For Extra Specials enquire.

IF IN SEARCH OF HEALTH

Consult

Mrs. E. Tollerton

CONSULTING HERBALIST,
115, KARANGAHAPE ROAD,
NEWTON, AUCKLAND.

ALL REMEDIES MADE FROM
PURE FRESH HERBS.

Consultations Daily.

Masseuse and Magnetic Healer.
Do not Suffer, but Use Nature's
Remedies.

CORRESPONDENCE INVITED.

THE VICTORIA DRY CLEANING CO.

Longley's Special Process of Dry Cleaning adds seasons to the life of an overcoat or a suit of clothes. Therefore, a small expenditure with Longley often saves a larger one with a tailor. Overcoats, Suits, Etc., Ladies, Costumes and Similar Articles of Wearing Apparel should be sent to

LONGLEY, 60 Victoria St., West
Phone 2161A.

Masonic Hotel

GISBORNE.

THE LEADING COMMERCIAL
HOTEL IN GISBORNE.

The above Hotel has been rebuilt, and is now open to guests. Visitors and travellers will find everything new, and can rely upon getting every comfort and attention. Best range of sample rooms in the Dominion.

E. GIBBS Proprietor.

Visitors to Wanganui.

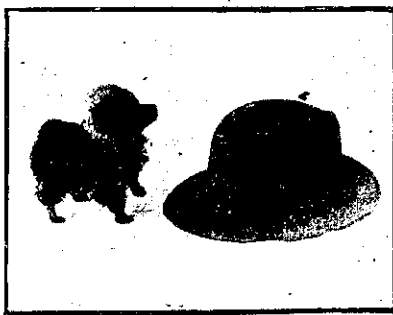
HOTEL BRAEBURN,
Anzac Parade,
WANGANUI,

Is Replete with every Modern Convenience, and Recognised as one of the Leading Private Hotels in the Dominion. Magnificent Views from the balcony of River, Sea and Countryside.

An Ideal Holiday Home. Motor Garage, Croquet Lawn, Electric Light. Four Minutes from Train and Steamer

TE WHARE KENNELS.

The Home of High-class Pekingese and Miniature Pomeranians.



Te Whare Golden Meteor, by Remuera Gold. Weight, 15 1/2 ozs.

POMERANIANS AT STUD.

Remuera Gold (imp.), £4 4s.; Remuera Masterpiece (orange), £3 3s.; Remuera Sunstar (orange), £3 3s.; Te Whare Kismet (orange), £3 3s.; Te Whare Sunshine Gold (orange), £3 3s.; Te Whare Goldfire (orange), £3 3s.

PEKINGESE AT STUD.

Mah Kong of Te Whare.—The latest imported red 8lb. dog. The best bred Pekingese Stud Dog in Australasia. Fee, £5 5s. Lu Ti of Te Whare (sable), one of the best N.Z. bred dogs. A real sensation. Fee, £5 5s.

PUPPIES ALWAYS FOR SALE.

MRS. F. HOUSE,

Te Whare Kennels,
142 ADELAIDE ROAD, WELLINGTON.
Phone 24-397.

[P. W. Douglas Phone 898A]

DOUGLAS AND CO.,

HOUSE, LAND & ESTATE AGENTS.
GEORGE TUCKER ... Representative

DOUGLAS AND CO.,

ALL THE TIME AUCTIONEERS AND
LAND SALESMEN.
VICTORIA ST. EAST, AUCKLAND.

**Waitomo Caves
Hostel.**

**Waitomo, Ruakuri,
and Aranui Caves,**

Reached by Daily Train
from
Wellington or Auckland.

THE Government Hostel
at Waitomo is situated
in a position from which the
caves can be conveniently
visited, and is connected by
Telephone with the local
Post and Telegraph Office.

TARIFF

Adults - 10s per Day.
Single Meals 2s 6d each.
Children between the ages of three
and 12 half rates.

Obtain your tickets from the Govt.
TOURIST BOOKING BUREAU
Wellington, corner of Grey and
Featherston Sts., opp. G.P.O.
Auckland: Custom Street.
NO EXTRA Charge for Booking.

**NAPIER (THE BRIGHTON OF
NEW ZEALAND.)**

STARTING POINT FOR

LAKE TAUPO

(Hot Lake District)

NAMED THE ANGLERS' PARADISE.

8 HOURS MOTOR FROM NAPIER.

Napier to Taupo is undoubtedly one of the most interesting and romantic scenic routes in the Southern Hemisphere, and for rugged mountain landscape is unsurpassed.

A motor car leaves Napier on Thursday at 8 a.m., lunching at Tarawera, arriving Taupo 4 p.m. Taupo depart Friday 8 a.m., Tarawera noon, arrive Napier at 4 p.m. Motor service 1st December to 30th April.

The mail coach leaves Napier on Monday 6.30 a.m., staying at Tarawera overnight, reaching Taupo about 4 p.m. Taupo depart Wednesday 7 a.m., arrive Napier Thursday, about 4 o'clock, December 1st to April 30th. May 1st to November 30th coach leaves Taupo Thursday.

Fares per coach, Napier to Taupo, Single, £2 10s.; Return, £4. Fares per motor car, Napier to Taupo, Single £3 10s.; Return, £6.

Full particulars at Government Tourist and T. Cook and Sons.

H.B. MOTOR COMPANY, LIMITED,
PROPRIETORS, NAPIER.

S E E

Clement Wragge's

LOVELY

TROPICAL GARDENS.

"W A I A T A,"

BIRKENHEAD, AUCKLAND.

A South Sea Paradise, an Indian Jungle. Glorious Palms, Bananas in Actual

Fruit, etc. Also Wragge Institute, Museum, Art Gallery.

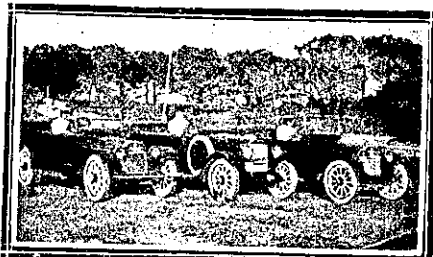
Open Daily: 10 to 6. Admission, 1/1. Morning and Afternoon Tea obtainable.

Telescope, Astronomical Evenings and Radium by Appointment. The Greatest

Object Lesson in all the Dominion.

SNELLING AND ANDREWS

Tourist Motor Garage,
BROUGHAM ST., NEW PLYMOUTH.



Headquarters of the North Egmont Mountain House Tourist Service, and New Plymouth-Opunake Mail Service.

We have Luxurious Touring Cars for hire day or night. During the summer months cars will leave Tourist Bureau for Mount Egmont on Tuesdays and Thursdays, at 9 a.m., also on Sundays. Only expert drivers employed. Cooks' Coupons accepted. Full particulars at

GARAGE, BROUGHAM STREET.
SNELLING & ANDREWS - PROPRS.

Now on sale everywhere!

Messrs. Benger's Food Ltd. are able to announce that supplies of Benger's Food should now be readily obtainable throughout India.

Should any consumer find difficulty in obtaining Benger's Food, communications addressed to Benger's Food Ltd., Manchester, England, will receive prompt attention.

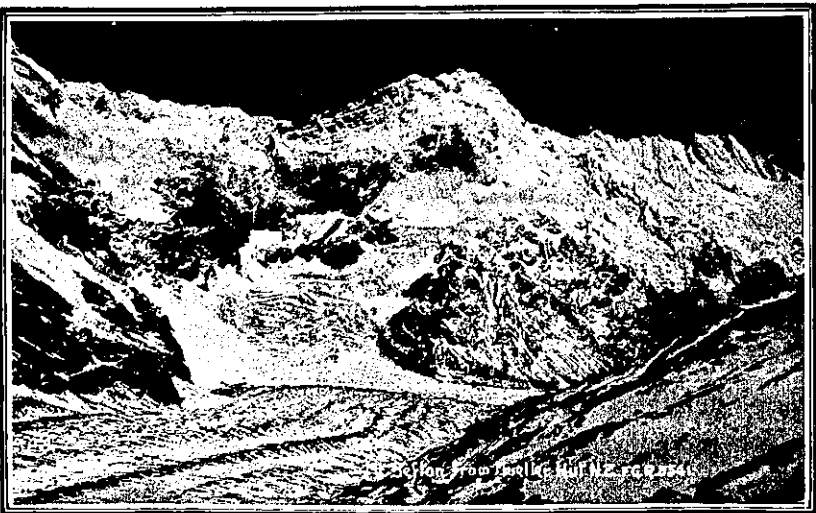


is for INFANTS, INVALIDS and the AGED.

During 35 years' use by the Medical Profession, it has fulfilled every claim made for it.

Booklet and full particulars post free from:

BENGER'S FOOD LTD. MANCHESTER, England.
Branch Office: NEW YORK (U.S.A.) 90 Beekman Street. SYDNEY (N.S.W.) 117 Pitt Street.



MOUNT COOK, The Place for a Holiday

ALL PARTICULARS FROM—
THE MOUNT COOK MOTOR CO., LTD.,
TIMARU, FAIRLIE, AND QUEENSTOWN.

Agents: Government Tourist Department and Thos. Cook and Sons.