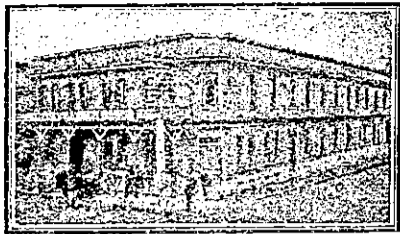


THE TOURIST AND TRAVELLER. WHERE TO STAY AND WHERE TO GO.

MASTERTON.



CLUB HOTEL, MASTERTON.

HERMANN CRASS ..... Proprietor (Late of Arcadia Hotel, Wellington, the Wellington Club and the U.S.S. Co.) First-class table. First-class sample rooms. Tariff, 9s. per day. Phone 57.

TAUERU HOTEL, MASTERTON.

JACK OLIVER ..... Proprietor. Every attention and civility to the travelling public. All wines and spirits of the very best. Hotel conducted under personal supervision of the proprietor.

MARTINBOROUGH.

MARTINBOROUGH HOTEL, MARTINBOROUGH.

This up-to-date hotel offers all the comforts of a first-class home. First-class stabling accommodation. Wines, Beers and Spirits of the very best. Letters and telegrams promptly attended to.

MRS. M. E. YOUNG ... Proprietress

NAPIER.

NAPIER HOTEL, NAPIER.

P.O. Box 313. Phone 149. ADJACENT TO MARINE PARADE. Free House for Everything. Moderate Tariff.

ALEX. BAIN ..... Proprietor.

PROVINCIAL HOTEL, NAPIER.

THE LEADING COMMERCIAL HOTEL IN NAPIER.

Now under New Management.

Central, Commodious, Comfortable.

Adjacent to Railway Station, Theatre and Marine Parade. The Provincial offers to Tourist and Travellers a Comfortable Motel at a moderate tariff.

T. A. HEATH ..... Proprietor. (Late Assistant Manager Masonic Hotel.)

ALBION HOTEL, NAPIER.

Renovated throughout, and offers excellent accommodation and the best of liquors. Tariff, from 8s. per day.

H. BARNETT ..... Proprietor.

NELSON.

PROVINCIAL HOTEL, BRIDGE STREET, NELSON.

J. J. F. J. BAXTER ..... Proprietor.

This Popular Hostelry has been taken over by Mr. Baxter, long and well known to the travelling public as steward of the s.s. Nikau. All wines and spirits guaranteed true to label. Harley's Prize Ales on draught.

NEW PLYMOUTH.

WHERE TO STAY IN NEW PLYMOUTH. WHITE HART HOTEL, NEW PLYMOUTH, N.Z.

Leading Commercial and Tourist House.

H. S. BROOKMAN ..... Proprietor.

OHAMARU.

NORTHERN PRIVATE HOTEL.

Corner Tyne and Wansbeck Streets, OHAMARU. Now under the proprietorship of Mrs. Harvey, late of the Star and Garter. Visitors are assured of every comfort and attention. Cuisine unsurpassed. Moderate tariff.

MRS. M. HARVEY .... Proprietress.

ONEHUNGA.

RAILWAY TERMINUS HOTEL, ONEHUNGA.

Renovated and refurbished and extensive alterations. Everything of the best. A hearty welcome extended to visitors.

Proprietor.

OTAHUHU.

CRITERION HOTEL, OTAHUHU.

FIRST-CLASS ACCOMMODATION AND ATTENTION.

Wines, Ales, and Spirits of the Highest Order.

N. CUNNINGHAM ..... Proprietor.

OTAKI.

CENTRAL HOTEL, OTAKI.

Most popular house of call in the town. All wines, spirits and ales true to label. Speight's Ale on draught. Tariff moderate. Ring Phone 3 for accommodation. P.O. Box 19.

J. D. HOWELL ..... Proprietor.

OTIRA.

TERMINUS HOTEL, OTIRA.

E. PENHALLURIACK .. Proprietor. (Late of Moana.)

Tourist and travellers will find First-class Accommodation and the Best of Ales, Wines and Spirits. Coach passengers have ample time to obtain refreshments.

PALMERSTON NORTH.

NEW ROYAL HOTEL

Modern Brick Building; electric light throughout. Tariff, 9s. per day. First-class Luncheon, 1s. 6d. Speight's Beer and Best of Wines and Spirits. Box 203. Phone 94.

S. W. R. EVANS ..... Proprietor. (Late of Hastie's Hotel, Feilding.)

THE CLUB HOTEL, PALMERSTON NORTH.

Stands on two acres of land; frontage 165ft.; promenade balcony; contains 60 bedrooms, private sitting-rooms and 12 sample rooms. The appointed house for the Association of N.Z. and Australian Commercial Travellers.

H. B. TUCKER, Proprietor and Owner.

PANMURE.

PANMURE HOTEL, PANMURE, AND DYER'S HALL, PANMURE.

HENRY H. DYER ..... Proprietor.

Wines and Spirits of the Best Brands only stocked. A hearty welcome always awaiting old friends and new faces.

PATEA.

THE ALBION HOTEL, PATEA.

First-class accommodation for tourists, families and travellers. Wines, Ales and Spirits of the Best.

J. A. COOGAN ..... Proprietor.

PORT CHALMERS.

PORT CHALMERS HOTEL, PORT CHALMERS.

RENOVATED AND REFURNISHED THROUGHOUT.

Now under the Proprietorship of G. A. LUONI. (Late of Wellington.)

RANFURLY.

RANFURLY HOTEL, RANFURLY.

Excellent accommodation for travellers. Centre of Maniapoto Plains. Trains stop 20 minutes for lunch.

ERNEST E. H. ROWE .. Proprietor.

ROTORUA.

GRANDE VUE, ROTORUA.

Situated centrally, with balconies overlooking the Beautiful Government Gardens, this House is without a rival in Rotorua.

The Government Bath Buildings, in the same grounds, are but two or three minutes' walk from the house, thus affording special bathing facilities to patrons.

GRANDE VUE has recently been taken over by MR. GEORGE BROWN,

in conjunction with MRS. REES; both for many years in charge of the Grand Hotel, Rotorua. Visitors to Rotorua can rely on finding their every comfort supplied at Grande Vue. Tariff, 9s. per day; £2 15s. per week. Telegrams: "Grande Vue, Rotorua."

Thos. Cook and Son, Booking Agents.

RIVERTON.

WHERE TO STAY IN RIVERTON.

RAILWAY HOTEL, Directly Opposite Railway Station.

Ideal Hotel for a holiday at the sea side. Everything of the very best.

CHAS. DE CLIFFORD .. Proprietor.

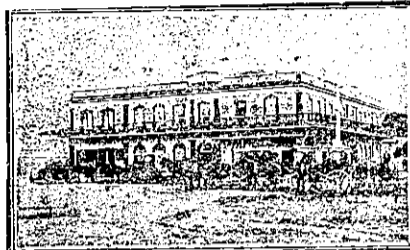
SHANNON.

ALBION HOTEL, SHANNON.

The Popular house of call. New, commodious; electric light. Most up-to-date on the Manawatu line. First-class accommodation. Speight's Ale on draught. All wines and spirits true to label. A welcome to all. Tariff, 8s. per diem. Phone 14.

W. McKEGG ..... Proprietor (Late of Otaki.)

TAURANGA.



STAR HOTEL, TAURANGA.

The Leading Commercial Hotel in the Bay of Plenty. Best accommodation. Excellent cuisine. Hot and cold baths. Telegrams: "Star, Tauranga." Phone 6. P.O. Box 21.

A. BROWN ..... Proprietor.

TE POHUE.

LAKE HOTEL, TE POHUE (on Main Napier-Taupo Rd)

Splendid health resort. Excellent accommodation for tourists and travellers. Sportsmen's paradise. Capital shooting and fishing. Big bags always available. Everything of the very best. A hearty welcome to all.

R. TAKLE ..... Proprietor. (Formerly of Dannevirke.)

TIMARU.

EXCELSIOR HOTEL, TIMARU.

EXCELLENT ACCOMMODATION. BEST WINES AND SPIRITS. W. FORD ..... Proprietor.

WAIHO FORKS HOTEL, UNSURPASSED ACCOMMODATION AND ATTENTION.

B. TAVENDALE ..... Proprietor.

WANGANUI.

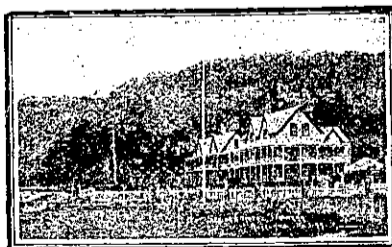
FEDERAL HOTEL, WANGANUI.

Ideal surroundings, facing Moutoa Gardens. Offers first-class accommodation to the travelling public. Moderate tariff. Now under the proprietorship of MR. E. DWYER.

ALBION HOTEL, WANGANUI.

Under entirely new management. First-class accommodation, ales, wines and spirits. Speight's beer on tap. Tariff, 10s. per day, £2 10s. per week. Phone 434. A. B. NEIGHBOUR ..... Proprietor (Late of Auckland.)

WAIWERA.



HOT SPRINGS HOTEL, WAIWERA

(The Brighton of N.Z. The Leading Seaside Resort of the Dominion).

On the Hauraki Gulf, 28 miles from Auckland by road or steamer. A First-class Seaside Hotel, with Modern Improvements. Excellent cuisine; electric light, motor garage; fishing, tennis, etc.; hot mineral swimming baths. Wines, spirits and bottled ales of the best. Under new management. Terms moderate. T. JEPHCOATE ..... Proprietor.

Drink

Peerless ALE

Made from Pure Malt and Hops. Naturally Matured.

For Purity and Quality Unexcelled INVALID STOUT

A SPECIALTY O. L. INNES & CO. LIMITED.

HAMILTON. Brewers, Bottlers and Aerated Water Manufacturers.

Branches: Hamilton and Waikato Aerated Works: Tauranga

LION ALE LION ALE

IS THE CHOICEST PRODUCTION OF THE BREWER'S ART.

THE IDEAL BEER FOR AN IDEAL CLIMATE. BREWED UNDER IDEAL CONDITIONS FROM PUREST MATERIALS.

On Sale at all Hotels

THE LION BREWERY, Ltd., KHYBER PASS, AUCKLAND.

\*\*\*\*\*

NOW READY.

CLEAVE'S

COMMERCIAL, MUNICIPAL AND GENERAL DIRECTORY, 1920.

THIRTY-SECOND YEAR OF PUBLICATION.

New and Enlarged Maps of CITY OF AUCKLAND, GISBORNE AND THAMES.

PRICE, 20s. POSTED, 21s.

\*\*\*\*\*

THE AUCKLAND SAFE DEPOSIT.

Corner of High Street & Vulcan Lane, AUCKLAND.

An Absolutely Secure Place for the safekeeping of Debentures and other valuable and important documents; also Jewels, Plate, etc.

An Impregnable Stronghold, containing separate and distinct Safes, of various sizes, but with no two keys of the same pattern.

Protected by Huge Doors of Steel, controlled by Automatic Time Locks.

Constructed by the Celebrated "Millers' Safe Co., Ltd., of London and Liverpool.

Absolutely Unassailable by Fire.

Absolutely Burglar-proof.

Printed and Published by ARTHUR CLEAVE, of Ellerslie, at his Registered Printing Office, Vulcan Lane, Auckland, for the Proprietors, Arthur Cleave and Co., Ltd.

THURSDAY, JUNE 24, 1920.