

A large and valuable motor car belonging to Dr. Sharp, of Otaki, was recently destroyed by fire. The doctor, after attending patients at his private hospital, about 11 p.m., was in the act of lighting the lamps, when there was an explosion, and in a moment the car was on fire. Efforts were made to save it, but the flames had too strong a hold. It is thought that someone, during the doctor's absence, had interfered with the benzine tap, as it was fairly evident that the ground was saturated. There was only a small insurance, and the doctor will be a heavy loser.

During the month of May, 26 motor cars, 26 motor cycles, and six motor lorries were registered in Hastings. The figures for May, 1919, were respectively 18, eight, and two. Since April 1, the beginning of the Borough Council's financial year, the registrations total 76, as against 47 for the same period last year. The motor registrations in Hastings in May are the largest for many years past.

There was a fair attendance of cyclists at the meeting held at Eltham to promote a road race. Mr. H. A. Nuttall was voted to the chair. In reply to questions, it was stated that Mr. A. Beesley had donated trophies for a race, and it was agreed to accept his generous offer and hold a race at an early date. Mr. H. Andrews moved: "That a club be formed, to be known as the Eltham Cycle Racing Club." Mr. Coleman (Ngaere) seconded the motion, and it was carried unanimously. Mr. H. Andrews was appointed secretary, and it was decided to leave the election of other officers to a future meeting, to be held in the near future. The first race meeting will be held on Thursday, July 15. Messrs. H. A. Nuttall and A. Beesley were appointed handicappers, and Mr. F. Vincent timekeeper.

RANGITIKEI GARAGE,
BULLS.
ON MAIN NORTH & SOUTH ROADS.
Motor Repairs to all Makes of Cars.
Up-to-date Garage Accommodation.
Telephone 47.
DANKS AND COOKSEY, Proprietors.

"There are too many motor collisions," said Mr. J. L. Stout, S.M., at the Palmerston North Magistrate's Court. He added that a great number of the accidents were caused by people driving on the wrong side of the road until they met somebody else, and then they pulled off, the delay in their action leaving a certain amount of doubt in the minds of other people.

FORD LIGHTS.

NO MORE DIM LIGHTS WHEN RUNNING SLOW.

ASK YOUR DEALER TO TELL YOU ABOUT THE 4 A. EQUALISER.

IF ANY DIFFICULTY, COMMUNICATE WITH US.

Pownall Rubber Co. Ltd., WANGANUI.
SOLE AGENTS FOR NEW ZEALAND.

Bargain List

HARLEY DAVIDSONS—

WITH SIDE-CAR, WINDSCREEN AND ACCESSORIES, AND IN GOOD ORDER—£135.

SOLO, WITH LAMPS, SPEEDOMETER—FIRST-CLASS PROPOSITION—£115.

SOLO, LAMPS, ETC.—£100.

BIX X. AND SIDE-CAR—ABSOLUTE BARGAIN—£130.

MERSON BROS.

170-172 SYMONDS STREET.
HARLEY-DAVIDSON AGENTS.

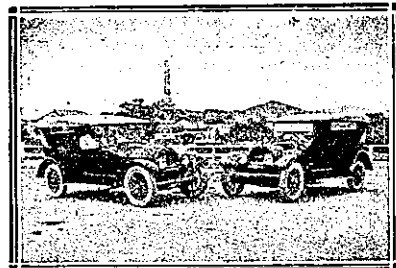
PELLOW & BOYD,
(EXPERT SERVICE.)
MOTOR ENGINEERS,
WAIPAWA,
HAWKE'S BAY.

MICHELIN STOCKISTS.

All oils and accessories stocked. Repairs to all makes of cars by Competent Mechanics.

Telephones: 48, 129 Waipawa.

The Leading Shop and Bar Fitters of New Zealand.
DRILLER AND CO.
(P. Reid, A. Reid, F. Reid, Proprietors.)
Hotels, Banks and Shop Fittings executed in all parts of the Dominion. Specialists in manufacture of Metal Mouldings for shop fronts and airtight show cases. British plateglass stocked. Phone 703A. Address:
1, HOLLAND STREET, WELLINGTON.



(Under Government Patronage.)

WILKINSON'S MOTOR SERVICE

13, DERBY STREET, GISBORNE.

Most Up-to-date, Reliable and Luxuriant Eight-cylinder Cadillac Cars for Hire.

Trips Arranged to any part of the Gisborne or Hawke's Bay Districts. Phones: 933 and 646M.

HODSON'S THE PIONEER

WANGANUI—MARTON MOTOR SERVICE

Our Cars meet all Auckland Express Trains twice daily. Cars leave "Parkville," Wanganui—Morning, 7 o'clock; Afternoons, 3.30 o'clock Single Fares, 10s.

PATRONS, PLEASE NOTE! Any sign other than the above are NOT HODSON'S CARS.

ALWAYS ASK FOR HODSON'S. Phone 505. Telegrams receive our Prompt Attention.

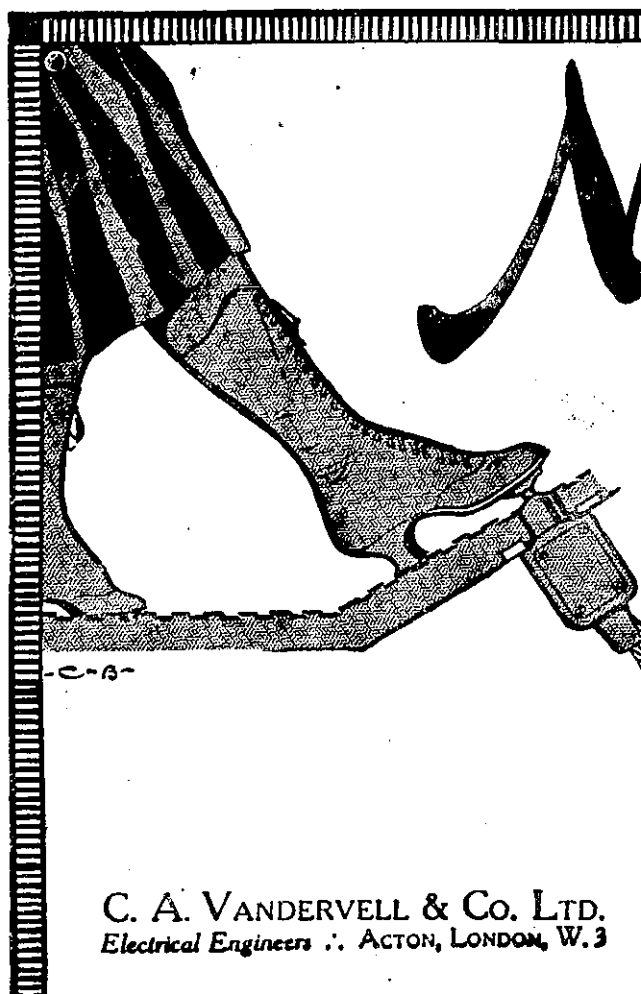
No connection with any other firm. Address: Hodson's Pioneer Motor Service, Wanganui.

C. and G. KEARSLEY'S Original WIDOW WELCH'S FEMALE PILLS Prompt and Reliable. For Ladies. The Only Genuine. Awarded Certificate of Merit at the Tasmanian Exhibition, 1891. 100 Years' Reputation. Ordered by Specialists for the Cure of all Female Complaints.

Sold in Bottles at all Chemists. **CATHERINE KEARSLEY, 42 Waterloo Road, London, England.**

NEW ZEALAND MOTOR AND CYCLE JOURNAL.

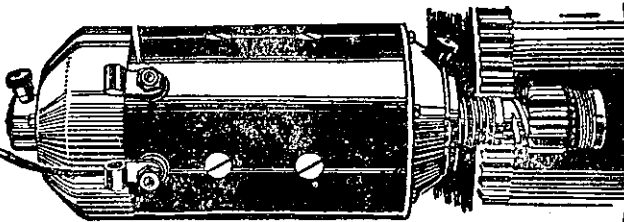
Published Monthly. Price, Sixpence. Of all Newsagents and Booksellers.



Nothing easier!

Just a gentle pressure and away you go—
Let us fit your post-war car with the last word in efficiency—THE NEW

ELECTRIC C.A.V. STARTER



THERE'S POWER BEHIND IT!

C. A. VANDERVELL & Co. LTD.
Electrical Engineers . . ACTON, LONDON, W.3

ADAMS LTD.

152, High Street, CHRISTCHURCH
King Street, PALMERSTON NORTH
The Avenue - - WANGANUI