

A peculiar accident happened in Manchester Street, Christchurch, the other day. At the Cashel Street intersection, a huge motor lorry was run into by an ordinary carrier's horse-drawn vehicle. The wheel of the carrier's cart caught the lorry near the tail board, and the impact tipped the lorry completely over. Its driver jumped clear, and when the lorry was righted, it was ascertained that even the paint was hardly scratched. The carrier's cart was quite uninjured.

The final batch of New Zealand members of the Royal Air Force returned to New Zealand by the Ionic. They were: Captain P. Fowler, of Feilding; Captain M. Buckley, of Fairlie; Lieutenant G. Hood, Master-ton; Lieutenant C. H. Noble-Campbell, Napier; Lieutenant Clarence Umbers, Dunedin; Lieutenant C. Doling Smith, of England; Lieutenant H. Smith, of Pahiatua; and and Lady Administrator Shortridge, of the Women's Royal Air Force.

A reserved decision by Mr. E. C. Cutten, S.M., in the case of Edward Spiers (Mr. Singer), who was recently charged by the police with leaving a motor car in a private street after sunset without sufficient lights, was delivered at the Auckland Police Court. Mr. Singer contended that the by-law requiring vehicles to show a white light in front and a red one behind did not apply to motor cars. Furthermore, the lane connecting Victoria and Darby Streets was a private street. The magistrate ruled that by-law No. 1 part 25, section 837, defined the kind of lights motor cars must be provided with, but by-law No. 5, section 2, required lights of a different kind, and such as could not conveniently be fitted to a motor car. The inference was that the by-law in question was not applicable to motor cars, and the charge was dismissed.

RANGITIKEI GARAGE,
BULLS.
ON MAIN NORTH & SOUTH ROADS.
Motor Repairs to all Makes of Cars.
Up-to-date Garage Accommodation.
Telephone 47.
DANKS AND COOKSEY, Proprietors.

Prior to his departure for the South to take up farming pursuits, Mr. W. E. Mills, a member of the council of the Canterbury Automobile Association, a past president, and the first elected life member of the association, was presented with a motor clock. The presentation was made on behalf of the association by Mr. J. S. Hawkes, the president.

FORD

LIGHTS.

NO MORE DIM LIGHTS
WHEN RUNNING SLOW.

ASK YOUR DEALER TO
TELL YOU ABOUT THE

4 A. EQUALISER.

IF ANY DIFFICULTY, COM-
MUNICATE WITH US.

**Pownall Rubber
Co. Ltd.,
WANGANUI.**

SOLE AGENTS FOR NEW
ZEALAND.

Bargain List

HARLEY DAVIDSONS—
WITH SIDE-CAR, WINDSCREEN
AND ACCESSORIES, AND IN
GOOD ORDER—£135.

SOLO, WITH LAMPS, SPEEDO-
METER—FIRST-CLASS PROPOSI-
TION—£115.

SOLO, LAMPS, ETC.—£100.

BIX X. AND SIDE-CAR—ABSOLUTE
BARGAIN—£130.

MERSON BROS.

170-172 SYMONDS STREET.
HARLEY-DAVIDSON AGENTS.

PELLOW & BOYD,
(EXPERT SERVICE.)
MOTOR ENGINEERS,
WAIPAWA,
HAWKE'S BAY.

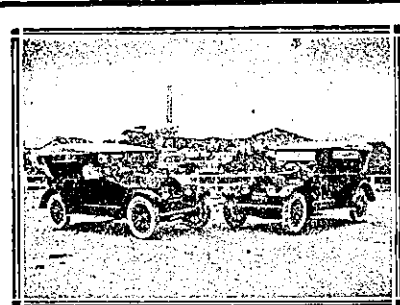
MICHELIN STOCKISTS.

All oils and accessories stocked.
Repairs to all makes of cars by Com-
petent Mechanics.
Telephones: 48, 129 Waipawa.

The Leading Shop and Bar Fitters of
New Zealand.

DRILLER AND CO.

(P. Reid, A. Reid, F. Reid, Proprietors.)
Hotels, Banks and Shop Fittings exe-
cuted in all parts of the Dominion.
Specialists in manufacture of Metal
Mouldings for shop fronts and airtight
show cases. British plateglass stocked.
Phone 703A. Address:
1, HOLLAND STREET, WELLINGTON.



(Under Government Patronage.)

**WILKINSON'S
MOTOR SERVICE**

13, DERBY STREET, GISBORNE.

Most Up-to-date, Reliable and Lux-
uriant Eight-cylinder Cadillac Cars
for Hire.

Trips Arranged to any part of the
Gisborne or Hawke's Bay Districts.
Phones: 933 and 646M.

**HODSON'S
THE PIONEER**

**WANGANUI — MARTON
MOTOR SERVICE**

Our Cars meet all Auckland Ex-
press Trains twice daily. Cars leave
"Parkville," Wanganui — Morning,
7 o'clock; Afternoons, 3.30 o'clock
Single Fares, 10s.

PATRONS, PLEASE NOTE!
Any sign other than the above are
NOT HODSON'S CARS.

ALWAYS ASK FOR HODSON'S.
Phone 505. Telegrams receive our
Prompt Attention.

No connection with any other firm.
Address: Hodson's Pioneer Motor
Service, Wanganui.

**C. and G. KEARSLEY'S Original
WIDOW WELCH'S FEMALE PILLS**
Prompt and Reliable. For Ladies.
The Only Genuine. Awarded Certi-
ficate of Merit at the Tasmanian
Exhibition, 1891. 100 Years' Reputa-
tion. Ordered by Specialists for
the Cure of all Female Complaints.

Sold in Bottles at all Chemists.

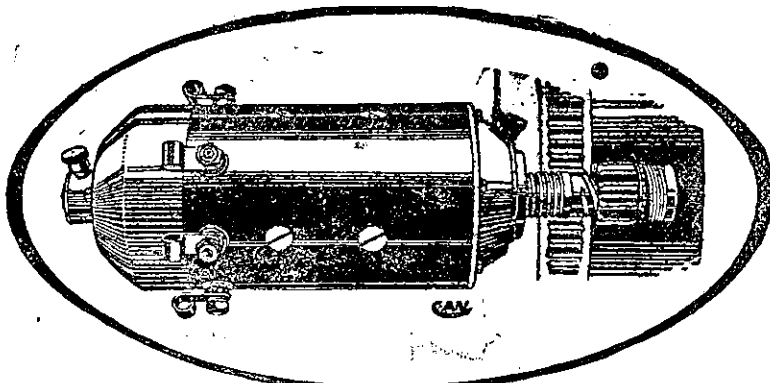
**CATHERINE KEARSLEY, 42 Wat-
erloo Road, London, England.**

**NEW ZEALAND MOTOR AND
CYCLE JOURNAL.**

Published Monthly. Price, Sixpence.
Of all Newsagents and Booksellers.



C. A. VANDERVELL & Co., LTD.
Electrical Engineers
ACTON, LONDON, ENGLAND



**THE BEST IS NOT TOO GOOD
FOR YOU.**

THEN WHY NOT HAVE THE BEST?

THE **C.A.V.** NEW



ELECTRIC STARTER

will be part of the necessary equipment of your post-war car
THE PINION ENGAGES SLOWLY, SURELY AND SILENTLY,
BEFORE THE FULL POWER IS APPLIED — ENSURING

Perfection in Starting

ADAMS LTD.

152, High Street, CHRISTCHURCH
King Street, PALMERSTON NORTH
The Avenue - - WANGANUI