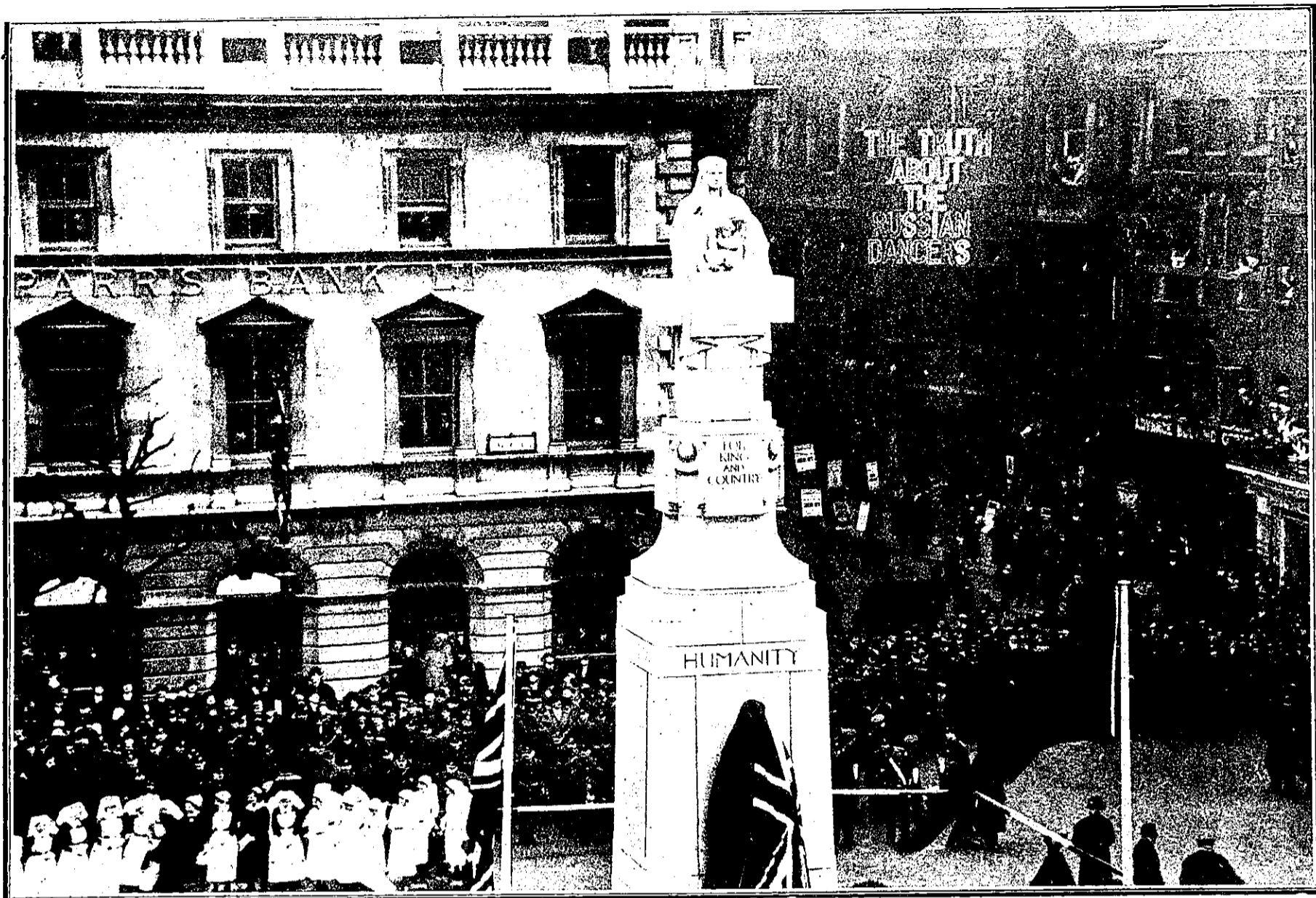
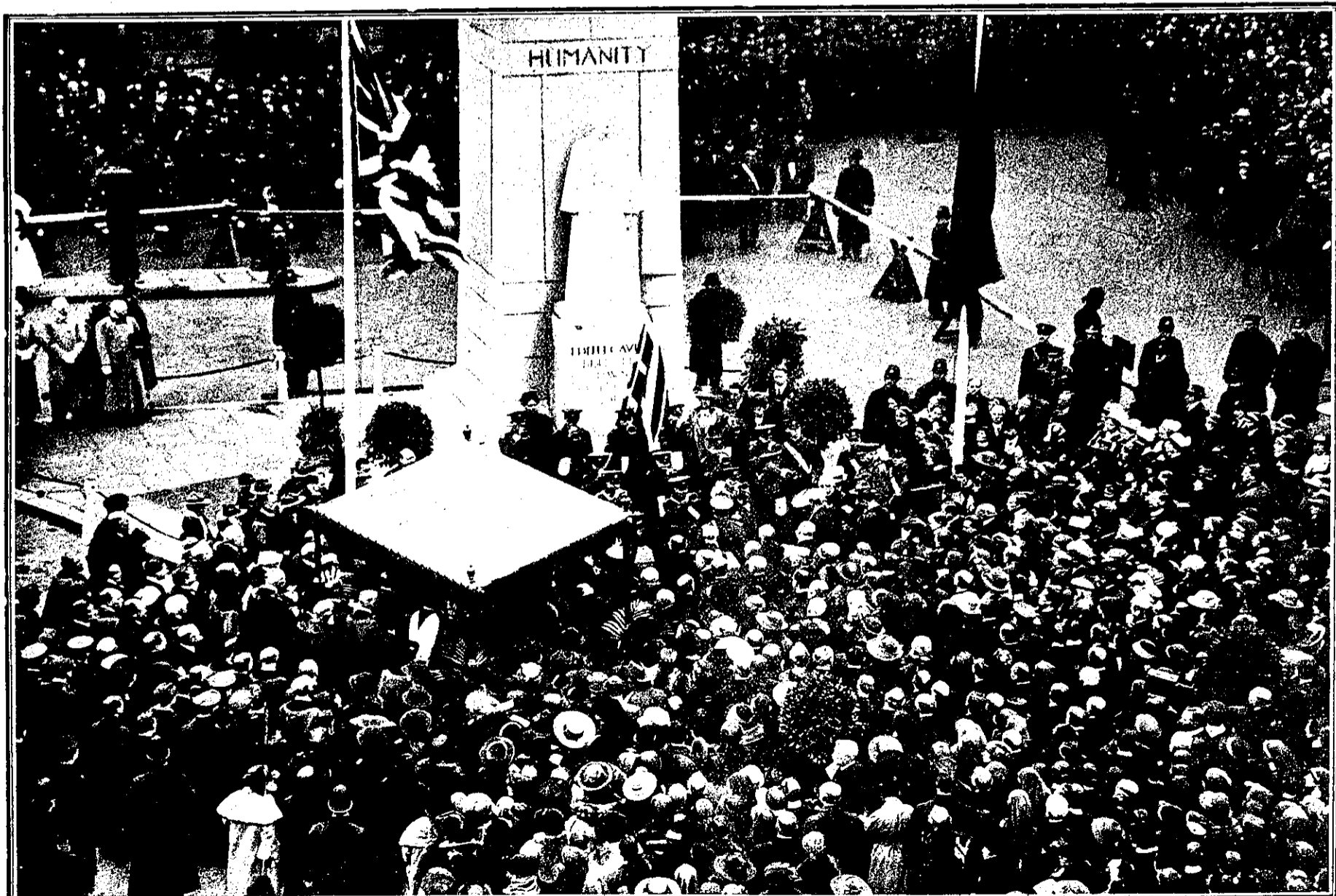


Queen Alexandra Unveils the Nurse Cavell Memorial in London.



SCENE IN ST. MARTIN'S PLACE, WESTMINSTER, LONDON, JUST BEFORE THE UNVEILING OF THE NURSE CAVELL MEMORIAL STATUE.—From two flagstuffs flanking the covered figure of the heroine floated the Union Jack and the Belgian colours, while round the base may be seen a number of the uniformed nurses from all the London hospitals, and behind them the Coldstreams' guard of honour. The statue, which was designed by Sir George Frampton, is 40 feet high, and weighs 175 tons.



THE UNVEILING BY QUEEN ALEXANDRA OF THE FINE STATUE ERECTED TO THE MEMORY OF NURSE CAVELL IN ST. MARTIN'S PLACE, TRAFALGAR SQUARE, BEFORE A LARGE ANGLO-BELGIAN ASSEMBLY.—GUARDS' BUGLERS SOUNDING THE "LAST POST" AT THE CONCLUSION OF THE CEREMONY. Addressing those present, Queen Alexandra said: "The countless thousands who will pass this spot in our time and in future generations will think with sorrow of her cruel death, with pride of her splendid fortitude, and with affection of her unselfish and womanly character. The example of Miss Cavell will be always before us, and her name will remain honoured and revered throughout the Empire." The unveiling scene was deeply impressive. As the calm features, steadfast with high resolve, were revealed to the great crowd, which stood still with emotion, the soft music of the bands, playing the hymn "Abide With Me," stole down the human aisle which led towards the open square, and it was noted that many were moved to tears, men as well as women. In letters of gold at the front of the memorial are inscribed: "Edith Cavell," and beneath them, "Brussels, Dawn—October 12, 1915."