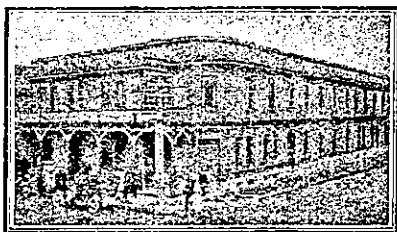


THE TOURIST AND TRAVELLER. WHERE TO STAY AND WHERE TO GO.

MASTERTON.



CLUB HOTEL,
MASTERTON.

HERMANN CRASS Proprietor
(Late of Arcadia Hotel, Wellington, the Wellington Club and the U.S.S. Co.)
First-class table. First-class sample rooms. Tariff, 9s. per day. Phone 57.

TAUERU HOTEL,
MASTERTON.

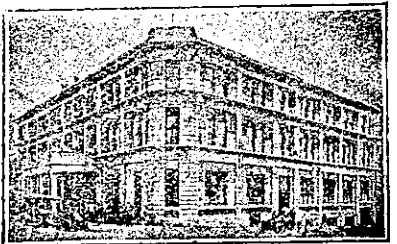
JACK OLIVER Proprietor.
Every attention and civility to the travelling public. All wines and spirits of the very best. Hotel conducted under personal supervision of the proprietor.

NAPIER.

NAPIER HOTEL,
N A P I E R.

P.O. Box 313. Phone 149.
ADJACENT TO MARINE PARADE.
Free House for Everything. Moderate Tariff.

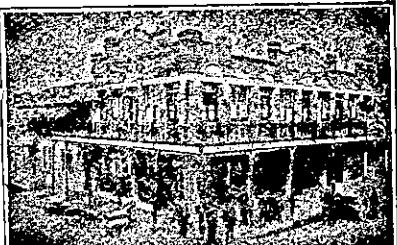
ALEX. BAIN Proprietor.



THE CALEDONIAN HOTEL,
N A P I E R.

This well-known Leading Commercial Hotel has recently been renovated, and is now under new management. A comfortable home. Tourists and travellers specially catered for. Central, convenient and refined. Only the Best Liquors Stocked.

A. C. HARRISON Proprietor.



CENTRAL HOTEL,
EMERSON STREET, NAPIER.

Now the Leading Commercial and Family Hotel in Napier. Entirely renovated. Finest liquors. All modern conveniences. Telephone 285.

WM. E. HILL Proprietor.

PROVINCIAL HOTEL,
N A P I E R.

THE LEADING COMMERCIAL HOTEL
IN NAPIER.

Now under New Management.

Central, Commodious, Comfortable.

Adjacent to Railway Station, Theatre and Marine Parade. The Provincial offers to Tourist and Travellers a Comfortable Hotel at a moderate tariff.

T. A. HEATH Proprietor.
(Late Assistant Manager Masonic Hotel.)

ALBION HOTEL
N A P I E R.

Renovated throughout, and offers excellent accommodation and the best of liquors. Tariff, from 8s. per day.

H. BARNETT Proprietor.

NEW PLYMOUTH.

WHERE TO STAY IN NEW PLYMOUTH.

WHITE HART HOTEL,
NEW PLYMOUTH, N.Z.

Leading Commercial and Tourist House.

H. S. BROOKMAN Proprietor.

MOTOR AND CYCLE JOURNAL.

Booksellers and Stationers.

NELSON.

PROVINCIAL HOTEL,
BRIDGE STREET, NELSON.

J. J. F. J. BAXTER Proprietor.

This Popular Hostelry has been taken over by Mr. Baxter, long and well known to the travelling public as steward of the s.s. Nikau. All wines and spirits guaranteed true to label. Harley's Prize Ales on draught.

TASMAN HOTEL,
THE PORT, NELSON.

This Popular Hotel, once known to many travellers and visitors to Nelson and West Coast as the "Ship," is now thoroughly renovated, remodelled and refurnished. One quality for everything—the Best. Dodson's Prize Ales and Stout available obtainable.

W. S. HORROCKS Proprietor.

PIER HOTEL,
PORT, NELSON.

Under New Management. Visitors and the travelling public will find everything in the way of comfort and attention. All meals and beds 1s. 6d. Cups of tea obtainable at any hour. Dining-room under the personal supervision of Mrs. Diamanti. Phone 343.

C. L. DIAMANTI Proprietor
(Late of the West Coast and Marlborough Goldfields).

OAMARU.

NORTHERN PRIVATE HOTEL.

Corner Tyne and Wansbeck Streets, O A M A R U.
Now under the proprietorship of Mrs. Harvey, late of the Star and Garter. Visitors are assured of every comfort and attention. Cuisine unsurpassed. Moderate tariff.

MRS. M. HARVEY Proprietress.

OMAHU, H.B.

FERNHILL HOTEL,
OMAHU, HAWKE'S BAY.

Sportsmen should be acquainted with the fact that good fishing and deer-stalking is plentiful around this district. First-class accommodation for tourists and the travelling public. Tariff 2s. per day. Phone 914.

W. EVERETT Proprietor.

ONEHUNGA.

RAILWAY TERMINUS HOTEL.
O N E H U N G A.

Renovated and refurnished and extensive alterations. Everything of the best. A hearty welcome extended to visitors.

J. N. LYONS Proprietor.

OTAKI.

CENTRAL HOTEL,
O T A K I.

Most popular house of call in the town. All wines, spirits and ales true to label. Speight's Ale on draught. Tariff moderate. Ring Phone 3 for accommodation. P.O. Box 19.

J. D. HOWELL Proprietor.

OTIRA

TERMINUS HOTEL,
O T I R A.

E. PENHALLURIAK .. Proprietor.
(Late of Moana.)

Tourist and travellers will find First-class Accommodation and the Best of Ales, Wines and Spirits. Coach passengers have ample time to obtain refreshments.

PANMURE.

PANMURE HOTEL,
P A N M U R E,
AND DYER'S HALL, PANMURE.

HENRY H. DYER Proprietor.

Wines and Spirits of the Best Brands only stocked. A hearty welcome always awaiting old friends and new faces.

PALMERSTON NORTH.

NEW ROYAL HOTEL

Modern Brick Building; electric light throughout. Tariff, 9s. per day. First-class Luncheon, 1s. 6d. Speight's Beer and Best of Wines and Spirits. Box 203. Phone 94.

S. W. R. EVANS Proprietor.
(Late of Hastie's Hotel, Feilding.)

THE CLUB HOTEL,
PALMERSTON NORTH.

Stands on two acres of land; frontage 165ft.; promenade balcony; contains 60 bedrooms, private sitting-rooms and 12 sample rooms. The appointed house for the Association of N.Z. and Australian Commercial Travellers.

H. B. TUCKER,
Proprietor and Owner.

PATEA.

THE ALBION HOTEL,
P A T E A.

First-class accommodation for tourists, families and travellers. Wines, Ales and Spirits of the Best.

J. A. COOGAN Proprietor.

PORT CHALMERS.

PORT CHALMERS HOTEL,
PORT CHALMERS.

RENOVATED AND REFURNISHED THROUGHOUT.

Now under the Proprietorship of
G. A. LUONI.
(Late of Wellington.)

RANFURLY.

RANFURLY HOTEL.
R A N F U R L Y.

Excellent accommodation for travellers. Centre of Maniapoto Plains. Trains stop 20 minutes for lunch.

ERNEST E. H. ROWE .. Proprietor.

RIVERTON.

WHERE TO STAY IN RIVERTON.
RAILWAY HOTEL,
Directly Opposite Railway Station.

Ideal Hotel for a holiday at the seaside. Everything of the very best.

CHAS. DE CLIFFORD .. Proprietor.

ROTORUA.

GRANDE VUE,
R O T O R U A.

Situated centrally, with balconies overlooking the Beautiful Government Gardens, this House is without a rival in Rotorua.

The Government Bath Buildings, in the same grounds, are but two or three minutes' walk from the house, thus affording special bathing facilities to patrons.

GRANDE VUE has recently been taken over by

MR. GEORGE BROWN,

in conjunction with **MRS. REES**; both for many years in charge of the Grand Hotel, Rotorua. Visitors to Rotorua can rely on finding their every comfort supplied at Grande Vue.
Tariff, 9s. per day; £2 15s. per week. Telegrams: "Grande Vue, Rotorua."

Thos. Cook and Son, Booking Agents.

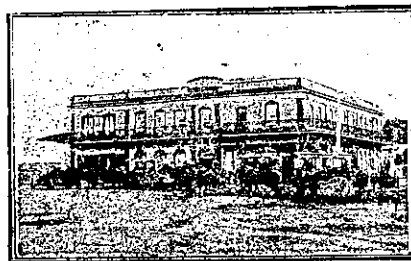
SHANNON.

ALBION HOTEL,
S H A N N O N.

The Popular house of call. New, commodious; electric light. Most up-to-date on the Manawatu line. First-class accommodation. Speight's Ale on draught. All wines and spirits true to label. A welcome to all. Tariff, 8s. per diem. Phone 14.

W. McKEGG Proprietor
(Late of Otaki.)

TAURANGA.



STAR HOTEL,
T A U R A N G A.

The Leading Commercial Hotel in the Bay of Plenty. Best accommodation. Excellent cuisine. Hot and cold baths. Telegrams: "Star, Tauranga." Phone 6. P.O. Box 21.

A. BROWN Proprietor.

TE POHUE.

TAKE HOTEL
TE POHUE (on Main Napier-Taupo Rd)
Splendid health resort. Excellent accommodation for tourists and travellers. Sportsmen's paradise. Capital shooting and fishing. Big bags always available. Everything of the very best. A hearty welcome to all.
R. TAKLE Proprietor.
(Formerly of Dannevirke.)

THAMES.

SALUTATION HOTEL,
MARY STREET, THAMES.

HARRY BROWNLEE ... Proprietor.

ONLY SPEIGHT'S ALE ON DRAUGHT

Best Ale in Town.

TIMARU.

EXCELSIOR HOTEL,
T I M A R U.
EXCELLENT ACCOMMODATION.
BEST WINES AND SPIRITS.
W. FORD Proprietor.

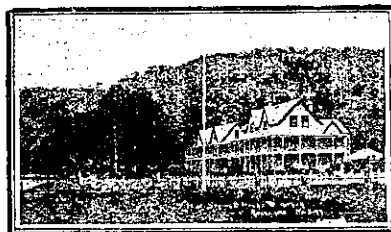
WAIHO FORKS HOTEL.
UNSURPASSED ACCOMMODATION
AND ATTENTION.
B. TAVENDALE Proprietor.

SHAMROCK HOTEL
STAFFORD STREET, TIMARU.

Every comfort and attention offered to visitors. The very Best Liquors. Handy to Railway, Post Office, etc.

J. MALMANCHE Proprietor.

WAIWERA.



HOT SPRINGS HOTEL.
W A I W E R A

(The Brighton of N.Z. The Leading Seaside Resort of the Dominion.)

On the Hauraki Gulf, 28 miles from Auckland by road or steamer. A First-class Seaside Hotel, with Modern Improvements. Excellent cuisine; electric light, motor garage; fishing, tennis, etc.; hot mineral swimming baths. Wines, spirits and bottled ales of the best. Under new management. Terms moderate.

T. JEPHCOATE Proprietor.

Drink
Peerless
—ALE—
Made from Pure Malt and Hops
Naturally Matured.

For Purity and Quality Unexcelled
INVALID STOUT

A SPECIALTY
O. L. INNES & CO.

LIMITED,
H A M I L T O N.
Brewers, Bottlers and Aerated Water
Manufacturers.

Branches: Hamilton and Waikato.
Aerated Works: Taumarunui.

LION ALE
LION ALE
IS THE CHOICEST PRODUCTION
OF THE BREWER'S ART.

THE IDEAL BEER FOR AN IDEAL
CLIMATE. BREWED UNDER
IDEAL CONDITIONS FROM
PUREST MATERIALS.

On Sale at all Hotels

THE LION BREWERY, Ltd.,
KHYBER PASS, AUCKLAND.

NOW READY.

CLEAVE'S
COMMERCIAL, MUNICIPAL AND
GENERAL

DIRECTORY, 1920.

THIRTY-SECOND YEAR OF
PUBLICATION.
New and Enlarged Maps of
CITY OF AUCKLAND, GISBORNE
AND THAMES.

PRICE, 20s. POSTED, 21s.