

## BAY OF PLENTY

The Most Progressive and Prosperous District in the whole Dominion.

WE CAN OFFER

**1100 Acres**

—OF—

## Freehold Land

Situated on the Rangitaiki River, about 12 miles from Te Teko and 25 miles from Whakatane. This property is partly improved and in its present state will carry over 1000 sheep and 300 cattle. It has never been farmed, and is mostly in rough feed. The plough could be put into 600 acres at once. There are nearly 900 acres of rich flats, of which 500 acres are equal to anything in the North Island. Convenient to school. Improvements consist of 3-roomed cottage and about 3 miles fencing. The Rangitaiki river is a natural boundary on one side. Magnificent trout fishing. It would take about £2000 to make this place carry four sheep to the acre and make it worth £30 per acre, with larger prospective value.

PRICE is £15 per Acre  
EASY TERMS.

For further particulars, apply

## Buscke & Parker,

ESTATE AGENTS,  
Low Street,

## GISBORNE.

N.Z. MOTOR & CYCLE JOURNAL.

Published Monthly.

PRICE, 6d.

## ROBERTS' Salamander Ranges

USED BY  
N.Z. RAILWAYS, AUSTRALIAN  
AND NEW ZEALAND DEFENCE  
DEPARTMENTS, HOSPITALS AND  
HOTELS.

MAKERS OF ELECTRICAL OVENS,  
IRONS, ELECTRICAL CALIFONTS,  
TOASTERS, GRILLERS  
Any Voltage.

**ROBERTS'**  
**IRON, STEEL & OVEN WORKS,**  
93 MANNERS STREET,  
**WELLINGTON, N.Z.**

## 11,000 Acres Near Rising Town and Freezing Works.

About 9000 in grass, balance bush and scrub; 900 acres ploughable; 20 paddocks, fencing in good order, splendidly watered. The country hilly, undulating and flat, lying well to sun; accessible by good metal roads; will winter 1½ sheep and cattle to the acre. Seven-roomed Homestead, 10-men whare, shearers' accommodation, outbuildings, woolshed, machines, dip, stockyards, etc.

PRICE, £11 PER ACRE.  
£40,000 Cash.

Balance easily arranged.  
Stock, Plant, etc., valuation. Approximate value Stock, £22,000.

Particulars from

**HARRY HALL,**  
SOLE AGENT,  
**Peel Street, GISBORNE**  
No. 1184.



**IT'S JUST THE COAT FOR WINTER.**

The coat illustrated is just such a garment as is required for the cold wintry months. It is of heavy Brown Tweed in a well tailored double-breasted style. This coat not only gives the necessary warmth but satisfactory service as well—157/6.

Another smart coat, but of single-breasted style, is of Dark Grey Diagonal Tweed, unlined, yet warm. It has inset sleeves, patch pockets, gauntlet cuffs and fly fronts.—139/6.

**MILNE & CHOYCE, Ltd.,**  
**AUCKLAND.**

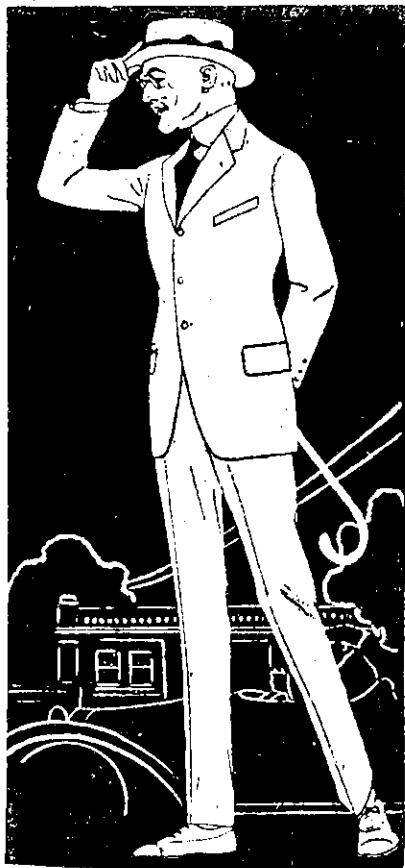
## AVOID EXTRAVAGANCE---

## Get Quality

Inevitably—Fowlds' prices were forced somewhat higher by the general advances—but they still stand in the medium range, a stronger attraction than ever.

As for Style and Quality, the Dominion-wide Fowlds' reputation answers that. Well dressed men from Auckland to Wellington buy their clothing from us because they KNOW their Quality.

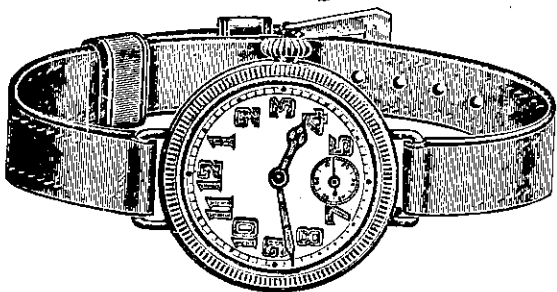
Take advantage of the New Zealand postage service—and mail your orders. It will save you money and dissatisfaction.



## GEO. FOWLDS, Ltd.

Victoria Arcade ——— AUCKLAND.

## KOHN'S Specialise in—



WRISTLET WATCHES  
FOR LADIES, GENTS,  
SOLDIERS AND  
FARMERS.

F. L. DIDDAMS, Manager.  
178 Queen St.,  
Auckland.

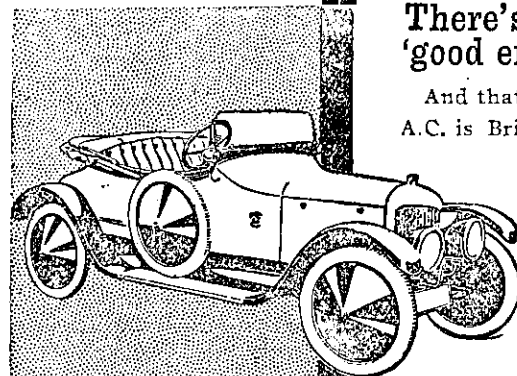


**Tested—Proven**

From start to finish there is no guess work about the A.C.

From the analytical laboratory tests of the material to the expert driver's trial, it must be O.K. or scrap! There's no such thing as 'good enough' with the A.C.

And that's Another reason why the A.C. is Britain's Leading Light Car—the car of lightest maintenance cost.



**AUTO-CARRIERS (1911) LTD,**  
THAMES DITTON, SURREY, ENGLAND.  
Repair Works and Temporary Sales Department:  
181-184 Hercules Rd., Westminster Bridge Road, London, S.E.1, England.