

What is the real origin of the now-familiar word "Pussyfoot?" asks a "London Evening News" writer. Some years ago a United States Commission was formed to see that drink prohibition was enforced among the North American Indians. The Chief Enforcement Officer appointed by the Commission proved to be a very astute man. During his tenure of office he secured over 3000 convictions for illicit liquor selling, and his almost uncanny cleverness in obtaining evidence gained him among the Indians a reputation that became legendary. They named him "Pussy-foot" because of the swift, silent, unexpectedness of many of his coups. And in due course the term "Pussy-foot" took on a wider significance. It became associated with the new campaign to extend drink prohibition among the white population of the States.

Mr. A. W. Butt, manager of the Bank of Australasia in Wellington, was given a dinner at the Empire Hotel, and a theatre party afterwards, by members of the Australian Club, of which he is president. Mr. Butt intends to make a tour of the Islands, then to visit Australia. Later on he will go to Europe.

At the Grand Hotel, Dunedin, Mr. A. A. Paape, who is relinquishing the management to take charge of the Oban Hotel, was presented with a suit case by Mr. G. Sutherland, who made the presentation on behalf of the staff, and expressed the good wishes of all to both Mr. and Mrs. Paape. Mrs. Paape was also presented with gifts.

His Lordship's Hotel, Lichfield St., Christchurch, which has always enjoyed a reputation for the excellence of its cuisine, liquors, etc., is now under the proprietorship of Mr. J. P. Goulding, late of the King Country, and well-known in sporting circles. We join with his many friends in wishing him success in his new sphere of activities.

Films taken on the battlefields have already brought the British Government over £71,000, a large proportion of which has been given to war charities.

Fishing near the mouth of the Rangitata. Mr. Jack Brown, Wakanui, landed a quinnat salmon, weighing 18lb. So far only six of these fish have been taken from the Rangitata this season, although anglers say they have been plentiful in the lagoon.

Dick Arnst, ex-champion sculler of the world, who has been out of the game for a long time, has decided to get well again, in view of the early visit of Ernest Barry. He has taken quarters at Chapman's shed, near Gladesville Bridge, on the Parramatta River, Sydney, and already has been for several rows. Of course, he has not yet fixed any definite programme, but it is his intention to compete in a £250 handicap which will be rowed on the Parramatta River in August.

**TOURIST MOTOR GARAGE**

BROUGHAM STREET, NEW PLYMOUTH.

Headquarters of the North Egmont Mountain House Tourist Service, and New Plymouth-Opunake Mail Service.

We have Luxurious Touring Cars for Hire day or night. During the Summer Months cars will leave Tourist Bureau for Mount Egmont on Tuesdays and Thursdays, at 9 a.m., also on Sundays. Only expert drivers employed. Cooks' Coupons accepted. Full Particulars at

GARAGE, BROUGHAM STREET.

E. WOOLDRIDGE, Proprietor.

**THE VICTORIA DRY CLEANING CO.**

Longley's Special Process of Dry Cleaning adds seasons to the life of an overcoat or a suit of clothes. Therefore, a small expenditure with Longley often saves a larger one with a tailor. Overcoats, Suits, Etc., Ladies, Costumes and Similar Articles of Wearing Apparel should be sent to

LONGLEY, 60 Victoria St., West Phone 2161A.

**WRAGGE'S WEATHER BUREAU**

INSTITUTE AND WAIATA GARDENS, BIRKENHEAD, AUCKLAND.—Farmers, Pastoralists, Sportsmen ASK CLEMENT WRAGGE about the Weather and Coming Seasons. Six months' forecast and best advice, 7/6; twelve ditto, 12/6. For Extra Specials enquire.

**Masonic Hotel . .**

**GISBORNE.**

THE LEADING COMMERCIAL HOTEL IN GISBORNE.

The above Hotel has been rebuilt, and is now open to guests. Visitors and travellers will find everything new, and can rely upon getting every comfort and attention. Best range of sample rooms in the Dominion.

E. GIBBS . . . . . Proprietor.

**Visitors to Wanganui.**

**HOTEL BRAEBURN, Anzac Parade, WANGANUI,**

Is Replete with every Modern Convenience, and Recognised as one of the Leading Private Hotels in the Dominion. Magnificent Views from the balcony of River, Sea and Countryside.

An Ideal Holiday Home. Motor Garage, Croquet Lawn, Electric Light. Four Minutes from Train and Steamer

[P. W. Douglas Phone 898A]

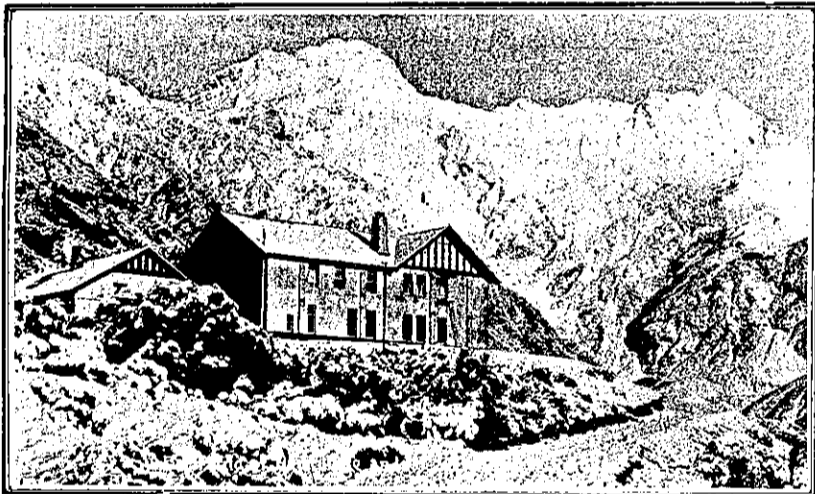
**DOUGLAS AND CO.,**

HOUSE, LAND & ESTATE AGENTS. GEORGE TUCKER . . . Representative

**DOUGLAS AND CO.,**

ALL THE TIME AUCTIONEERS AND LAND SALESMEN.

VICTORIA ST. EAST, AUCKLAND.



**MOUNT COOK, The Place for a Holiday.**

ALL PARTICULARS FROM— THE MOUNT COOK MOTOR CO., LTD., TIMARU, FAIRLIE, AND QUEENSTOWN.

Agents: Government Tourist Department and Thos. Cook and Sons.

**"THE WAVERLEY" Private Hotel ROTORUA.**



Just Outside Main Railway Entrance, to Right.

FIRST-CLASS ACCOMMODATION FOR TOURISTS AND TRAVELLERS.

EXCELLENT CUISINE. ALL TRIPS ARRANGED. Cook's Coupons Accepted.

TARIFF, 8s. PER DAY, 45s. PER WEEK.

E. CORY . . . . . Proprietor. Phone 242.

The Leading Hotel is . . .

**Hotel Langmuir,**

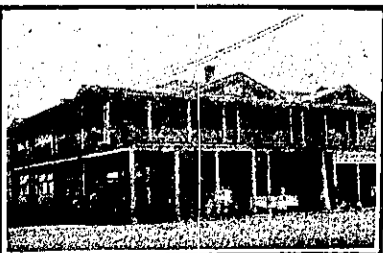
TAUMARUNUI.

(Right opposite Station.)

Heated Rooms, Hot and Cold Water in Bedrooms. Electric Light. Modern Service in all Departments. Commodious Sample Rooms.

A. J. LANGMUIR . . . . . Proprietor.

P.O. Box 51. Phone 54.



**HIGH-CLASS POMERANIANS FOR SALE.**

At Stud, "Bleak House Don," imported. Stud Fee, £5 5s.

At Stud, "Remuera Gold," imported. Stud Fee, £5 5s.

For Sale Puppies by the above Imported Miniature Pomeranians for Pets or Show. All colours. From £5 5s.

**FOR SALE LOVELY PERINESE PUPPIES.**

From Best Imported Stock. From £10 10s.

Apply to MRS. F. HOUSE,

"Te Whare Kennels," 142, ADELAIDE RD., WELLINGTON. Phone 1293.

**TOURISTS AND VISITORS TO AUCKLAND**

Please Remember

**A.A.A. HIRING GARAGE,**

158, ALBERT STREET, AUCKLAND.

Luxurious Cars on Hire Day or Night.

Tours Arranged for Visitors.

Trains and Steamers Met.

Efficient Chauffeurs.

Phone 2590A.

HOUSTON & MAUNSELL, Proprietors.

**Waitomo Caves Hostel.**

**Waitomo, Ruakuri, and Aranui Caves,**

Reached by Daily Train from

Wellington or Auckland

THE Government Hostel at Waitomo is situated in a position from which the caves can be conveniently visited, and is connected by Telephone with the local Post and Telegraph Office.

**TARIFF**

Adults - 10s per Day.

Single Meals 2s 6d each.

Children between the ages of three and 12 half rates.

Obtain your tickets from the Govt. TOURIST BOOKING BUREAU

Wellington, corner of Grey and Featherston Sts., opp. G.P.O.

Auckland: Custom Street.

NO EXTRA Charge for Booking.

**NAPIER (THE BRIGHTON OF NEW ZEALAND.)**

STARTING POINT FOR

**LAKE TAUPO**

(Hot Lake District)

NAMED THE ANGLERS' PARADISE.

8 HOURS MOTOR FROM NAPIER.

Napier to Taupo is undoubtedly one of the most interesting and romantic scenic routes in the Southern Hemisphere, and for rugged mountain landscape is unsurpassed.

A motor car leaves Napier on Thursday at 8 a.m., lunching at Tarawera, arriving Taupo 4 p.m. Taupo depart Friday 8 a.m., Tarawera noon, arrive Napier at 4 p.m. Motor service 1st December to 30th April.

The mail coach leaves Napier on Monday 6.30 a.m., staying at Tarawera overnight, reaching Taupo about 4 p.m. Taupo depart Wednesday 7 a.m., arrive Napier Thursday, about 4 o'clock, December 1st to April 30th. May 1st to November 30th coach leaves Taupo Thursday.

Fares per coach, Napier to Taupo, Single, £2 10s.; Return, £4. Fares per motor car, Napier to Taupo, Single £3 10s.; Return, £6.

Full particulars at Government Tourist and T. Cook and Sons.

H.B. MOTOR COMPANY, LIMITED, PROPRIETORS, NAPIER.

**Commercial Hotel,**

THE SQUARE,

PALMERSTON NORTH.

This well-known Hotel is the Rendezvous for Commercial and Visitors.

Replete with every Comfort. Cuisine a Special Feature.

Wines and Liquors of the Highest Quality.

THOMAS CHILDS - Proprietor

SEE

**Clement Wragge's**

LOVELY

**TROPICAL GARDENS.**

"W A I A T A,"

BIRKENHEAD, AUCKLAND.

A South Sea Paradise, an Indian Jungle. Glorious Palms, Bananas in Actual Fruit, etc.

Also Wragge Institute, Museum, Art Gallery.

Open Daily: 10 to 6. Admission, 1/1. Morning and Afternoon Tea obtainable. Telescope, Astronomical Evenings and Radium by Appointment. The Greatest Object Lesson in all the Dominion.

ARE YOU A MOTORIST?

Then You must read the

"N.Z. MOTOR AND CYCLE JOURNAL"

Of all Newsagents and Booksellers. Monthly. Price, 6d.