

THE TOURIST AND TRAVELLER. WHERE TO STAY AND WHERE TO GO.

MARTINBOROUGH.

MARTINBOROUGH HOTEL,
MARTINBOROUGH.

This up-to-date hotel offers all the comforts of a first-class home. First-class stabling accommodation. Wines, Beers and Spirits of the very best. Letters and telegrams promptly attended to.

MRS. M. E. YOUNG ... Proprietress.

MASTERTON.



CLUB HOTEL,
MASTERTON.

HERMANN CRASS Proprietor
(Late of Arcadia Hotel, Wellington, the Wellington Club and the U.S.S. Co.)

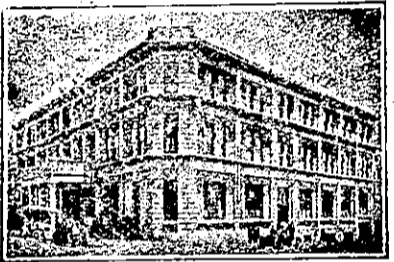
First-class table. First-class sample rooms. Tariff, 9s. per day. Phone 57.

TAUERU HOTEL,
MASTERTON.

JACK OLIVER Proprietor.

Every attention and civility to the travelling public. All wines and spirits of the very best. Hotel conducted under personal supervision of the proprietor.

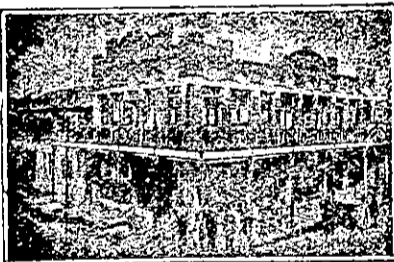
NAPIER.



THE CALEDONIAN HOTEL,
NAPIER.

This well-known Leading Commercial Hotel has recently been renovated, and is now under new management. A comfortable home. Tourists and travellers specially catered for. Central, convenient and refined. Only the Best Liquors Stocked.

A. C. HARRISON Proprietor.



CENTRAL HOTEL,
EMERSON STREET, NAPIER.

Now the Leading Commercial and Family Hotel in Napier. Entirely renovated. Finest liquors. All modern conveniences. Telephone 285.

WM. E. HILL Proprietor.

PROVINCIAL HOTEL,
NAPIER.

THE LEADING COMMERCIAL HOTEL
IN NAPIER.

Now under New Management.

Central, Commodious, Comfortable.

Adjacent to Railway Station, Theatre and Marine Parade. The Provincial offers to Tourist and Travellers a Comfortable Hotel at a moderate tariff.

T. A. HEATH Proprietor.
(Late Assistant Manager Masonic Hotel.)

NEW PLYMOUTH.

WHERE TO STAY IN NEW PLYMOUTH.

WHITE HART HOTEL,
NEW PLYMOUTH, N.Z.

Leading Commercial and Tourist House.

H. S. BROOKMAN Proprietor.

N.Z. MOTOR & CYCLE JOURNAL.

Published Monthly.

Of all Newspapers and Booksellers.

NELSON.

PROVINCIAL HOTEL,
BRIDGE STREET, NELSON.

J. J. F. J. BAXTER Proprietor.

This Popular Hostelry has been taken over by Mr. Baxter, long and well known to the travelling public as steward of the s.s. Nikau. All wines and spirits guaranteed true to label. Harley's Prize Ales on draught.

TASMAN HOTEL,
THE PORT, NELSON.

This Popular Hotel, once known to many travellers and visitors to Nelson and West Coast as the "Ship," is now thoroughly renovated, remodelled and refurnished. One quality for everything—the Best. Dodson's Prize Ales and Stout always obtainable.

W. S. HORROCKS Proprietor.

PIER HOTEL,
PORT, NELSON.

Under New Management. Visitors and the travelling public will find everything in the way of comfort and attention. All meals and beds 1s. 6d. Cups of tea obtainable at any hour. Dining-room under the personal supervision of Mrs. Diamanti. Phone 343.

C. L. DIAMANTI Proprietor
(Late of the West Coast and Marlborough Goldfields).

OMARU.

NORTHERN PRIVATE HOTEL.

Corner Tyne and Wansbeck Streets, O M A R U.

Now under the proprietorship of Mrs. Harvey, late of the Star and Garter. Visitors are assured of every comfort and attention. Cuisine unsurpassed. Moderate tariff.

MRS. M. HARVEY Proprietress.

OMAHU, H.B.

FERNHILL HOTEL,
OMAHU, HAWKE'S BAY.

Sportsmen should be acquainted with the fact that good fishing and deer-stalking is plentiful around this district. First-class accommodation for tourists and the travelling public. Tariff 8s. per day. Phone 914.

W. EVERETT Proprietor.

OTAKI.

CENTRAL HOTEL,
O T A K I.

Most popular house of call in the town. All wines, spirits and ales true to label. Speight's Ale on draught. Tariff moderate. Ring Phone 3 for accommodation. P.O. Box 19.

J. D. HOWELL Proprietor.

OTIRA

TERMINUS HOTEL,
O T I R A.

E. PENHALLURIACK .. Proprietor.
(Late of Moana.)

Tourist and travellers will find First-class Accommodation and the Best of Ales, Wines and Spirits. Coach passengers have ample time to obtain refreshments.

ONEHUNGA.

RAILWAY TERMINUS HOTEL,
O N E H U N G A.

Renovated and refurnished and extensive alterations. Everything of the best. A hearty welcome extended to visitors.

J. N. LYONS Proprietor.

PANMURE.

PANMURE HOTEL,
P A N M U R E,
AND DYER'S HALL, PANMURE.

HENRY H. DYER Proprietor.

Wines and Spirits of the Best Brands only stocked. A hearty welcome always awaiting old friends and new faces.

PALMERSTON NORTH.

THE CLUB HOTEL,
PALMERSTON NORTH.

Stands on two acres of land; frontage 165ft.; promenade balcony; contains 60 bedrooms, private sitting-rooms and 12 sample rooms. The appointed house for the Association of N.Z. and Australian Commercial Travellers.
H. B. TUCKER,
Proprietor and Owner.

NEW ROYAL HOTEL

Modern Brick Building; electric light throughout. Tariff, 9s. per day. First-class Luncheon, 1s. 6d. Speight's Beer and Best of Wines and Spirits. Box 203. Phone 94.

S. W. R. EVANS Proprietor.
(Late of Hastie's Hotel, Feilding.)

PATEA.

THE ALBION HOTEL,
P A T E A.

First-class accommodation for tourists, families and travellers. Wines, Ales and Spirits of the Best.

J. A. COOGAN Proprietor.

PORT CHALMERS.

PORT CHALMERS HOTEL,
PORT CHALMERS.

RENOVATED AND REFURNISHED THROUGHOUT.

Now under the Proprietorship of G. A. LUONI.
(Late of Wellington.)

RIVERTON.

WHERE TO STAY IN RIVERTON.

RAILWAY HOTEL,

Directly Opposite Railway Station.

Ideal Hotel for a holiday at the seaside. Everything of the very best.

CHAS. DE CLIFFORD .. Proprietor.

ROTORUA.

GRANDE VUE,
R O T O R U A.

Situated centrally, with balconies overlooking the Beautiful Government Gardens, this House is without a rival in Rotorua.

The Government Bath Buildings, in the same grounds, are but two or three minutes' walk from the house, thus affording special bathing facilities to patrons.

GRANDE VUE has recently been taken over by

MR. GEORGE BROWN,

in conjunction with MRS. ZEEB; both for many years in charge of the Grand Hotel, Rotorua. Visitors to Rotorua can rely on finding their every comfort supplied at Grande Vue.

Tariff, 9s. per day; £2 15s. per week. Telegrams: "Grande Vue, Rotorua."

Thos. Cook and Son, Booking Agents.

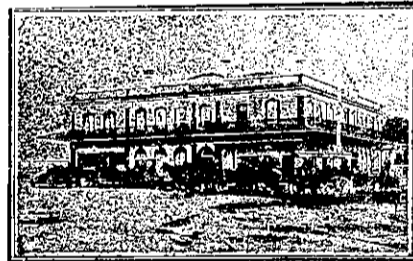
SHANNON.

ALBION HOTEL,
S H A N N O N.

The Popular house of call. New, commodious; electric light. Most up-to-date on the Manawatu line. First-class accommodation. Speight's Ale on draught. All wines and spirits true to label. A welcome to all. Tariff, 8s. per diem. Phone 14.

W. McKEGG Proprietor
(Late of Otaki.)

TAURANGA.



STAR HOTEL,
T A U R A N G A.

The Leading Commercial Hotel in the Bay of Plenty. Best accommodation. Excellent cuisine. Hot and cold baths. Telegrams: "Star, Tauranga." Phone 6. P.O. Box 21.

A. BROWN Proprietor.

THAMES.

SALUTATION HOTEL,
MARY STREET, THAMES.

HARRY BROWNLEE ... Proprietor.

ONLY SPEIGHT'S ALE ON DRAUGHT

Best Ale in Town.

TIMARU.

EXCELSIOR HOTEL,
T I M A R U.

EXCELLENT ACCOMMODATION. BEST WINES AND SPIRITS.

W. FORD Proprietor.

WAIHO FORKS HOTEL.
UNSURPASSED ACCOMMODATION AND ATTENTION.

B. TAVENDALE Proprietor.

SHAMROCK HOTEL
STAFFORD STREET, TIMARU.

Every comfort and attention offered to visitors. The very Best Liquors. Handy to Railway, Post Office, etc.

J. MALMANCHE Proprietor.

Miscellaneous Items

The Minister for Defence of the Australian Commonwealth (Senator Pearce) announced in Melbourne that the Imperial Government had decided some time ago to issue a "Gallipoli" clasp with the war service medal. It is understood that New Zealand soldiers who served on Gallipoli will also receive the clasp.

Sydney is the fifth port of the Empire. This fact is set out in a book entitled "The Port of Sydney," issued by the Sydney Harbour Trust. The other four ports are London, Liverpool, the Tyne, and Cardiff. Sydney's trade reached its apex in 1914—the year of the war—when 10,142 ships entered their aggregate nett tonnage being 9,437,310. Last year the figures were 7499 ships, aggregating 5,152,666 tons nett. Without counting the ferry wharves and jetties used for private purposes, there are now 62,496 feet of wharfage used, and another 4,573 feet approaching completion. The greater part of this shipping accommodation is provided within half a mile of the Post-office. The total area of water in the port is 14,284 acres, or about 22 square miles, of which 3000 acres have a depth of from 35 ft. to 160ft. Exclusive of the fairway and bays there are over 1000 acres available for anchoring ships of the deepest draught. One of the most interesting notes in the book refers to the depth of the channels. There is not a ship afloat that cannot enter Sydney Harbour in safety at any state of the tide. The eastern channel has a depth of 40ft.

MARTIN'S
APIOL & STEEL
PIILLS
For Ladies.
A French Remedy for all Irregularities. Thousands of ladies keep a box of Martin's Pills in the house, so that on the first sign of any irregularity of the system a timely dose may be administered. Those who use them recommend them, hence their enormous sale. All Chemists and Stores, or post free 5s.
MARTIN, SOUTHAMPTON, ENGLAND.

Drink
Peerless
—ALE—
Made from Pure Malt and Hops
Naturally Matured.
For Purity and Quality Unexcelled
INVALID STOUT
A SPECIALTY.
C. L. INNES & CO.
LIMITED,
HAMILTON.
Brewers, Bottlers and Aerated Water Manufacturers.
Branches: Hamilton and Washi.
Aerated Works: Tauranga.

LION ALE
LION ALE
IS THE CHOICEST PRODUCTION
OF THE BREWER'S ART.
THE IDEAL BEER FOR AN IDEAL CLIMATE. BREWED UNDER IDEAL CONDITIONS FROM PUREST MATERIALS.
On Sale at all Hotels.
THE LION BREWERY, Ltd.,
KHYPER PASS, AUCKLAND.

TE POHUE.
LAKE HOTEL,
TE POHUE (on Main Napier-Taupo Rd)
Splendid health resort. Excellent accommodation for tourists and travellers. Sportsmen's paradise. Capital shooting and fishing. Big bags always available. Everything of the very best. A hearty welcome to all.
R. TAKLE Proprietor.
(Formerly of Dannevirke.)