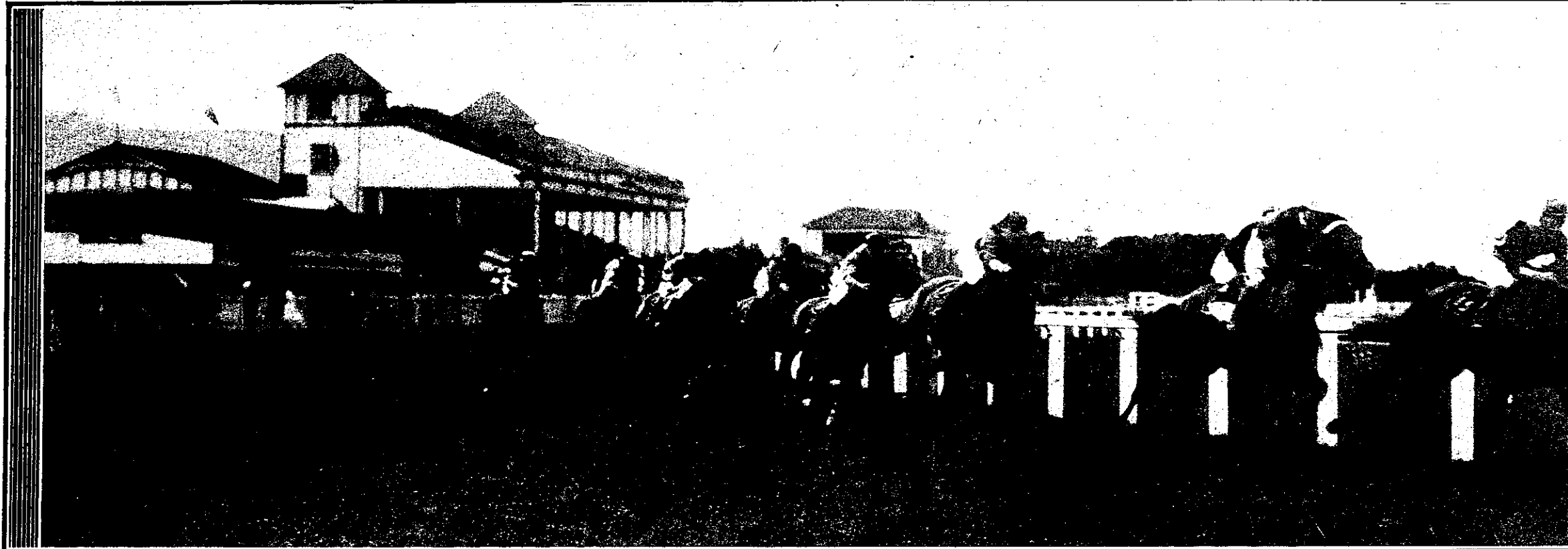


Sterling Race Ends in Dead-heat--The Contest for the Wellington Cup, of 500 sovs, (1½ miles) at Tr



THE FIELD ROUNDING THE BEND OUT OF THE STRAIGHT IN THE WELLINGTON CUP—MARQUETEUR (M. McDONALD) HAS COMMAND FROM ROSE WREATH AND KILRUSH (RIBBON, KILMOON AND SURVEYOR RACING NEXT IN THE ORDER NAMED.



THE FINISH OF THE WELLINGTON CUP (1½ MILES)—ORATRESS (M. McCARTEN) AND KILMOON (R. REED), IN CENTRE, RUN A DEAD-HEAT, WITH MARQUETEUR (M. McDONALD) THIRD, AMYTHAS (RACING ON OUTSIDE) AND SURVEYOR BEING NEXT TO FINISH.