

MANGERE.

9 ACRES 2RDS. 14P. of rich land, situated 1½ miles from Onehunga trams; McKenzie Rd., Mangere. Seven-roomed bungalow house, built three years; h. and c. water, etc., porcelain bath and hand basin, motor garage, cowshed, fowl run, etc. Land surveyed into two sections. Price, £3000. £750 cash, balance arranged. Will sell 5a. 1rd. without house for £200 per acre.

IHMATA, MANGERE.

100 ACRES, best dairying land in Mangere District. 30-bail cowshed, concrete floor and numerous out-buildings; concrete sheep dip. Large house in first-class condition, every modern convenience. Price, £90 per acre, £4500 cash, balance at 5½ per cent. Owner would sell 50 acres and buildings for £5000, £1500 cash, balance three years; or, 50 acres, no buildings, for £3600, £1000 cash, balance three years at 5½ per cent.

M. J. MOORE,

ESTATE AGENT AND VALUER.

QUEEN ST., ONEHUNGA.

Phone 24, Onehunga.

Telegrams: "Mat. Moore, Onehunga."

**DON'T PAY
FANCY PRICES.**

— LAKE, —
SPOT CASH
SHOEIST,
GIVES THE BEST VALUE IN
TOWN.

15/6 Ladies' Glace Kid Court
and Ankle Strap Shoes.
Ladies' Patent Leather
Court and Ankle Bow
Shoes; Derby Shoes,
Hand-sewn Soles, Sev-
eral Styles.

409-411 COLOMBO STREET,
SYDENHAM,
CHRISTCHURCH.

(End of Penny Section from
Square. Take Cars Nos. 2, 9, 12).
Phone 2013.

**ROBERTS'
Salamander Ranges**

USED BY
N.Z. RAILWAYS, AUSTRALIAN
AND NEW ZEALAND DEFENCE
DEPARTMENTS, HOSPITALS AND
HOTELS.

MAKERS OF ELECTRICAL OVENS,
IRONS, ELECTRICAL CALIPONS,
TOASTERS, GRILLERS
Any Voltage.

ROBERTS'
IRON, STEEL & OVEN WORKS,
93 MANNERS STREET,
WELLINGTON, N.Z.

**11,000 Acres Near Rising
Town and Freezing Works**

About 9000 in grass, balance bush and scrub; 900 acres ploughable; 20 paddocks, fencing in good order, splendidly watered. The country hilly, undulating and flat, lying well to sun; accessible by good metal roads; will winter 1½ sheep and cattle to the acre. Seven-roomed Homestead, 10-men whare, shearers' accommodation, outbuildings, woolshed, machines, dip, stockyards, etc.

PRICE, **£11 PER ACRE.**
£40,000 Cash.

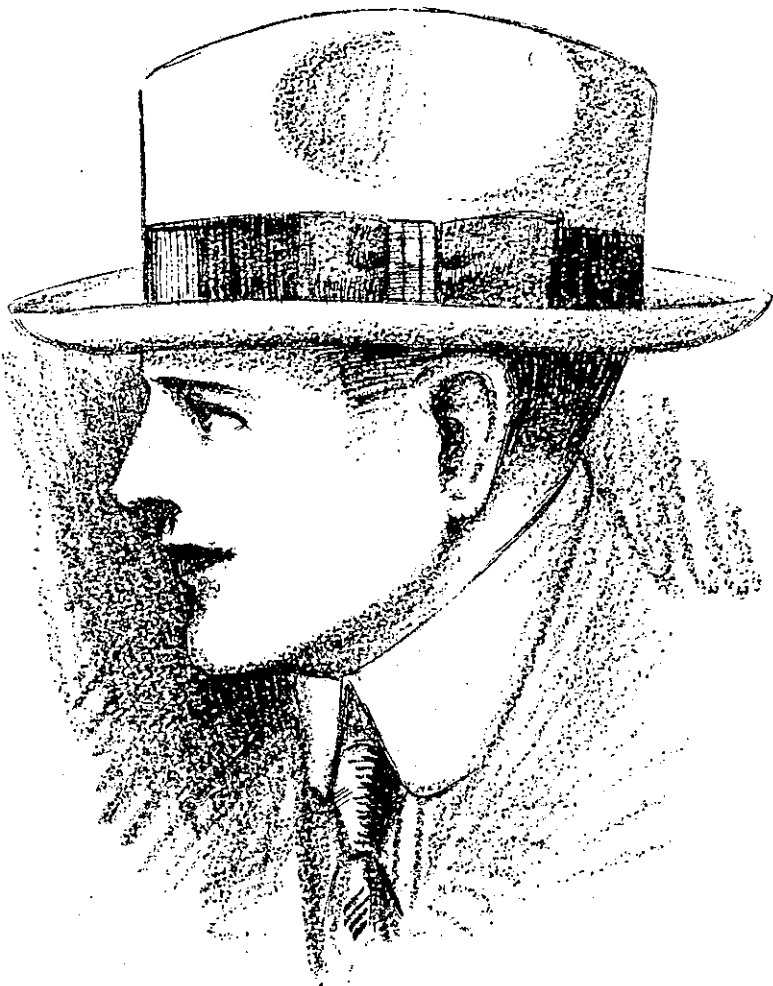
Balance easily arranged.
Stock, Plant, etc., valuation. Approx-
imate value Stock, £22,000.

Particulars from

HARRY HALL,
SOLE AGENT,
Peel Street, GISBORNE
No. 1184.

THE PANAMA

is a hat that always finds favour, being cool and comfortable.



The shapes this season are of a decidedly smart appearance and of good quality. The Alpine, as illustrated, 45s. Other shapes 24s. 6d. to 63s. Boys' Panamas in all sizes, 9s. 11d. to 25s.

MILNE & CHOYCE, Ltd

Queen St.

AUCKLAND.

VARIETY

THE KEYNOTE TO THIS STORE'S
POPULARITY.

This is a metropolitan clothing store with diversified following—young men, middle aged men and elderly men. Each demand definite details of styles, patterns, colors and textures.

That's why the extensive variety this store presents makes selection easy.

**The Holiday Season is
Approaching.**

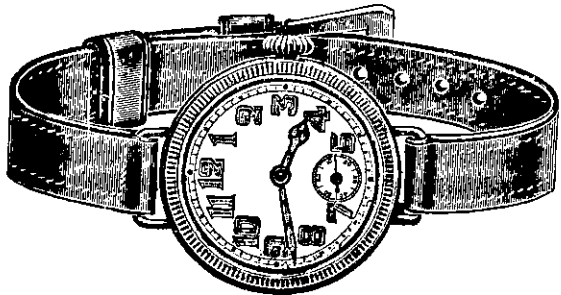
Many men will want new clothing and they will find our Summer models worthy values and real economy.

IF YOU CANNOT VISIT US
Mail Your Requirements
THEY WILL RECEIVE OUR BEST
ATTENTION.

GEO. FOWLDS, Ltd.Victoria Arcade
AUCKLANDManners Street
WELLINGTON**KOHN'S Specialise in—**

WRISTLET WATCHES
FOR LADIES, GENTS,
SOLDIERS AND
FARMERS.

F. L. DIDDAMS, Manager.
178 Queen St.,
Auckland.



The
RELIABLE
Light Car

Finished with Government contracts, we are once more heading again towards civilian needs, and are well advanced with our post-war programme, which is to revive the production of the famous A.C. Light Car with many improvements.

It is the safest selection you in the colonies can make, because it is the one light car upon which you can place every dependence. It is the one light car with which you know you may safely undertake any cross country journey; meeting and successfully encountering anything in the way of roads, tracks, hills or water splashes—and know you will make the journey with speed, safety and comfort without any annoying stop on account of mechanical breakdown.

You don't get them with an A.C.
Orders can be placed direct or through
any reputable motor firm now.

AUTO CARRIERS (1911) LTD.,

181-183, Hercules Road,
Westminster Bridge Road,
London, S.E.1, England.
Head Office: Thames Ditton,
Surrey.

