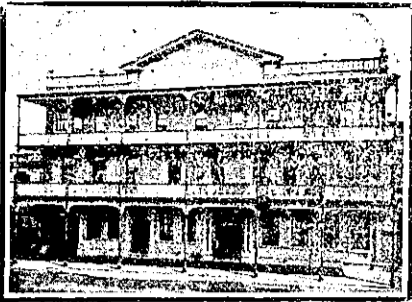


NEW ZEALAND HOTEL DIRECTORY.— (CONTINUED) — PATRONISED BY HORSEMEN, CYCLISTS, MOTORISTS, SPORTSMEN, COMMERCIAL TRAVELLERS, AND THE THEATRICAL PROFESSION.

WANGANUI.



FOSTER'S HOTEL,
TAUPO QUAY, WANGANUI.
Nearly opposite Town Bridge.
A HOME AWAY FROM HOME.
Tel. No. 46. P.O. Box No. 54.

J. R. FOSTER Proprietor.



PROVINCIAL HOTEL,
WANGANUI.

FIRST-CLASS ACCOMMODATION FOR THE TRAVELLING PUBLIC. ONLY THE BEST OF ALES, WINES AND SPIRITS KEPT IN STOCK.

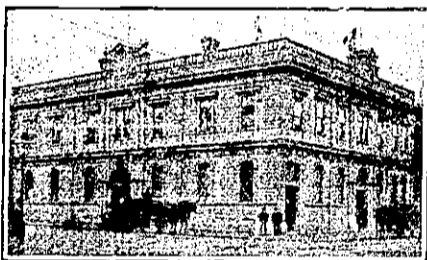
W. TUCK Proprietor.



MCCARTHY'S HOTEL,
WANGANUI.

IMMEDIATELY OPPOSITE RAILWAY STATION AND WHARVES.

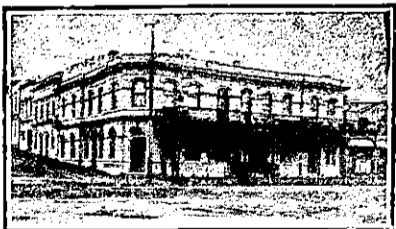
G. J. MCCARTHY Proprietor.
Box 135. Telephone 147.



METROPOLITAN HOTEL,
TAUPO QUAY, WANGANUI.

(One Minute from Post Office and Railway Station.) P.O. Box 138, Tel. 84.
First-class accommodation. Excellent cuisine. TARIFF, 6s 6d Per Day.

T. H. NIXON Proprietor.
(Late of New Criterion Hotel, Wanganui)



CHAVANNES' HOTEL,
WANGANUI.

THE COMFORTABLE, A HOMEY HOME FOR VISITORS TO WANGANUI.

Every Home Comfort. Excellent Cuisine. Commodious Sample Rooms.
J. G. SWAN Proprietor.
Phone 30. P.O. Box 21

MASONIC HOTEL,
(River Bank, below New Bridge)
WANGANUI.

EVERYTHING OF THE BEST. A GOOD PLACE FOR A QUIET EVENING.

ALLAN MANGUSON Proprietor.

CITY HOTEL

(Opposite Courtenay Place Tram Terminus, Wellington.)

J. J. FIRTH Proprietor.
(Late of Caledonian Hotel).

Speight's and Staples' Ales on Tap.

WELLINGTON.



PATRONISED BY ROYALTY.

HOTEL CECIL,
WELLINGTON, N.Z.

Opposite Government Railway Station and Junction of City Tramways, and Adjoining Parliamentary Buildings.

EXCELLENT CUISINE AND EVERY MODERN CONVENIENCE.

P.O. Box 372. Telephone No. 354.
Telegraphic Code: "Cecil."

TARIFF ON APPLICATION.

COOK'S COUPONS ACCEPTED.

MARGARET McPARLAND,
Proprietress.

The New Commercial Hotel
WELLINGTON.

Under entirely New Management.

The most luxurious and comfortable Hotel in the Dominion.

THREE MINUTES' from Wharf Station, and all Government Offices and Business Houses. Electric Lift.

Day and Night Porters always in attendance.

COZY SMOKING ROOM, ELEGANTLY APPOINTED DRAWING-ROOM AND WRITING-ROOM; ALSO SITTING-ROOMS ON EVERY FLOOR.

TARIFF—8/- per day; 42/- per week.
NOTE.—Only the Best Wines and Spirits Stocked.
ALL LIQUORS AS FRESH AS THE LATEST NEWS.

M. H. ROBERTSON, Proprietor.

CLARENDON HOTEL,

MANNERS-STREET, WELLINGTON.

J. O'MEARA Proprietor.

Mr. O'Meara, late of Masterton and Feilding, desires to intimate to old friends and new that he has taken over the above popular house.

This centrally and conveniently situated Hotel offers the very Best Accommodation.

Best brands of Wines, Spirits, etc., kept in stock.

TRAMWAY HOTEL,

ADELAIDE ROAD, WELLINGTON.

MR FRANK McPARLAND

Begs to inform his friends and the public that he has taken over this well known Hotel. Visitors can rely on getting only the Best.

THE WENTWORTH PRIVATE HOTEL,

CLYDE QUAY, WELLINGTON.

The above well-known House has been recently renovated and refurnished throughout, and now offers first-class accommodation to the travelling public.

It is situated close to the Te Aro Railway Station and Oriental Bay, and can be reached by a penny tram from town.

Moderate Tariff.

M. WEDDERSPOON Proprietor.

BELLEVUE "GARDEN" HOTEL.

(Under Entirely New Management), Nine miles by road or rail from Wellington.

COME for a month, a week, a weekend, or a day to this ideal holiday and rest resort. In the seclusion of these Beautiful Gardens you may roam amongst the rarest of plants, flowers, shrubs, and trees, and you'll wish to repeat your visit. Accommodation of the best. Excellent Cuisine. Garage and Stabling. Admission to Gardens, 6d. Hot Water provided.

Boarders have free access to Gardens, Refreshments and cut flowers always procurable. Best brands of liquors, etc. 6d Coach Fare from Lower Hutt Railway Station.

N. STUART CAMPBELL.. Proprietor.

WELLINGTON.—Continued.

THE EMPIRE HOTEL,

(LIMITED).

THE LEADING & MOST CENTRAL HOTEL IN WELLINGTON.

POST OFFICE HOTEL,
WELLINGTON.

Offers First-class Accommodation at a Moderate Tariff. Excellent Cuisine. Telegrams: Post Office Hotel, Wellington.
Telephone 2827.

MRS M. McVINISH.

WESTPORT.

EMPIRE HOTEL,
WESTPORT.

P.O. Box No. 7. TELEPHONE No. 14.
The above well-known hostelry now offers first rate accommodation to the travelling public.

Speight's Superior Brews always on Tap.

FAMILY AND COMMERCIAL HOUSE OF WESTPORT.

H. H. McMASTER Proprietor.



GRAND HOTEL,
WESTPORT.

Under Vice-Regal Patronage. Their Excellencies Lords Ranfurly, Plunket and Islington.

R. TURNBULL Proprietor.

Designs and Estimates Submitted. Architect's Details Artistically Treated.

Auckland Fibrous Plaster Coy., Ltd.

Architectural Modellers

All Kinds of Plaster and Cement Ornaments, of Latest Design at Lowest Rates. Fibrous Ceilings, Cornices, Centre Flowers, etc., a Specialty. Telephone No. 2850.

Wakefield St., Auckland.

Phone 4340.

The Parisian Dry Cleaning & Pressing COMPANY.

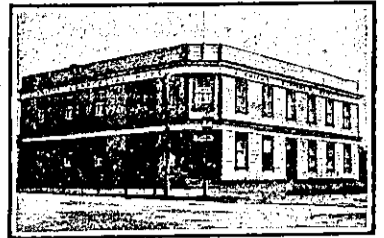
(Opposite Star Hotel).

Suit Cleaning Specialists.

Travellers', Professional People's orders executed within eight hours.

11 Great North Road, Auckland.

WAVERLEY.



COMMERCIAL HOTEL,
WAVERLEY.

E. A. HART Proprietor.

THE APPOINTED HOTEL FOR COMMERCIAL TRAVELLERS.

First-class Accommodation for the Travelling Public. Hot and Cold Shower Baths. TARIFF: 6s per day.

WHANGAREI.



WHANGAREI HOTEL,
WHANGAREI.

This fine House, just re-built in brick and furnished in up-to-date style, now offers unrivalled Accommodation to the Travelling Public.

Sample Room. Hot and Cold Baths. Two minutes' walk from Saltwater Bathing Place.

Stabling Second to None. Best Wines, Ales and Spirits kept in Stock.

SAMUEL McMAHON Proprietor.

BRIDGE HOTEL,
WHANGAHEHU.

GUS. McDONALD

Has pleasure in announcing he has taken over the above well-known Hotel, and will supply all Leading Brands of Beer and Spirits.

Extra paddocking accommodation is now provided for drovers.

WOODVILLE.

MASONIC HOTEL,
WOODVILLE.

Finest Commercial House in town. Hot and cold shower baths. Cuisine second to none.

Sample Rooms for the convenience of Commercial Travellers. Telephone No. 33.

A. A. PENFOLD Proprietor.

Red House Hotel, OPUNAKE

TOMMY KNOWLES, Proprietor.

Only the Best Brands of Wines, Ales, Spirits, etc kept in stock.

WHANGAMOMONA HOTEL.

EXCELLENT ACCOMMODATION FOR TRAVELLERS.

WINES AND SPIRITS THE BEST.

JAS. ROTHERY Proprietor.

