

NEW ZEALAND HOTEL DIRECTORY.—(CONTINUED.)—PATRONISED BY HORSEMEN, CYCLISTS, MOTORISTS, SPORTSMEN, COMMERCIAL TRAVELLERS, AND THE THEATRICAL PROFESSION.

PAPAKURA.

GLOBE HOTEL.

PAPAKURA.

BOB PORTER Proprietor.
The leading Commercial Hotel in the district. Excellent accommodation for tourists, travellers and visitors. First-class table always kept. All meals 1s. Wines and spirits of the best quality. Popular Lion Ale on tap. Every attention and comfort. Afternoon tea for motororing parties a speciality. Good stabling and paddocks. Horses and traps for hire. Moderate tariff.

PATEA.

MASONIC HOTEL.

PATEA.

The Hotel has been recently renovated and refurnished throughout and offers first-class accommodation to travellers. **TARIFF, 4s 6d PER DAY.**

E. SMITH Proprietor.

THE ALBION HOTEL.

PATEA.

FIRST-CLASS ACCOMMODATION FOR TOURISTS, FAMILIES AND TRAVELLERS. WINES, ALES AND SPIRITS OF THE BEST.

J. A. COOGAN Proprietor.

PICTON.

OXLEY'S HOTEL.

PICTON.

THOMAS GEARY Proprietor.

Visitors to Picton will find every modern comfort and convenience at the above hotel. Special attention is devoted to the comfort of patrons. The Hotel faces the wharf, and is near the Railway Station. Telegrams and letters promptly answered.

RAKAIA.

RAILWAY HOTEL.

RAKAIA (opp. Station).

JNO. AFFLECK (late of Awahura), having taken over the above Hotel from Mr. Ted Fox, wishes to notify his friends and public that every attention will be paid to the comfort of guests, who can also rely upon the quality of the brands of wines and spirits stocked, the best ales bottled and on draught.

JOHN AFFLECK Proprietor.



SOUTH RAKAIA HOTEL.

(Opposite Bank New Zealand).

RAKAIA.

HARRY TAYLOR Proprietor.
Having taken over this Hotel again after an absence of three and a-half years, I cordially invite my old friends and the public generally to give me a call, which I shall much appreciate. The Travelling Public will find my Hotel comfortable, clean, with the best of Liquors and Ales, and the charges moderate.

REEFTON.

STEVENSON'S HOTEL.

REEFTON.

(Under Vice-Regal Patronage).

Booking Office for Newman Bros. Westport and Nelson coaches, Cassidy and Co.'s Otrra-Cass coaches. Coach leaves Hotel daily for Westport. For Nelson, Tuesdays and Fridays. P.O. Box No. 15. Telephone No. 32.

W. A. STAPLETON, Proprietor.

GLADSTONE HOTEL.

REEFTON.

Excellent Accommodation for Travelling Public. All coaches from Railway stop at door.

M. E. POWLEY Proprietor.

ROSS.

CITY HOTEL

(Late Pedrazzini). ROSS

The first house from Railway Station. Splendid all-round accommodation at moderate tariff. Pedrazzini was always noted for its superior quality of liquors.

G. T. ADAMSON Proprietor.

STRATFORD.



CLUB HOTEL.

STRATFORD.

C. DIAMOND (Late Albion Hotel, Patea), Desires to intimate to old friends and new that he has taken over the above popular hostelry. All liquors of the highest quality. Speight's Beer always on draught. First-class Accommodation for the Travelling Public. Tariff is 6d per day.

SUMNER.

THE SUMNER HOTEL

SUMNER.

In the heart of the town, and a few yards from the Beach. Visitors to this seaside resort will find every modern comfort and convenience at this Hotel, which has been thoroughly renovated and brought up to date.

Best of Wines and Spirits.

ALF. C. HULLETT Proprietor.

TAIHAPE.

THE GRETNÄ HOTEL.

TAIHAPE.

MRS F. H. GIBBONS .. Proprietress.

This well-known Hostelry has all the Comforts of a Home and Conveniences of a First-class Hotel. The premises are furnished with a view to the comfort of the public. Tariff, 8s per day. Good Sample Room. Best Brands only. Passengers called for early trains.

TAUPIRI.

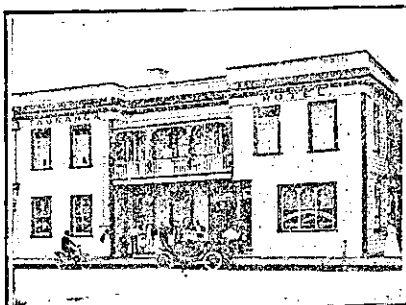
TAUPIRI HOTEL.

TAUPIRI.

SPLENDID ACCOMMODATION. CLOSE TO RAILWAY STATION. THE VERY BEST LIQUORS IN STOCK.

S. KEOGH Proprietor

TAURANGA.



TAURANGA HOTEL.

TAURANGA.

FIRST-CLASS CUISINE AND ATTENTION. ALES, WINES AND SPIRITS OF GUARANTEED QUALITY. Correspondence Promptly Attended to. P.O. Box 37. Telegraphic Address: "Tourist," Tauranga.

SAMUEL TANNER Proprietor (Late of Waihi).

TE AUTE.



TE AUTE HOTEL.

Half-way between WAIPAWA and HASTINGS.

Best Wines and Spirits kept. Good table. Good Shooting and Fishing.

T. BURGESS Proprietor.

TEMUKA.

CROWN HOTEL.

TEMUKA.

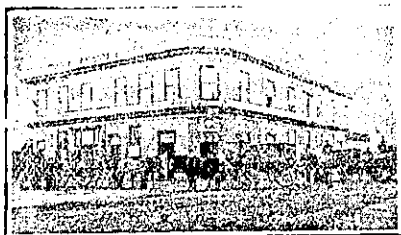
The leading Tourist and Commercial House.

Extensive additions have recently been made to this popular Hotel, which now possesses every modern comfort and convenience for tourists and travellers.

The Crown Hotel is situated within a few minutes of the Temuka and Opihi rivers, which are noted trout streams. Every information supplied on application to the proprietor.

CHAS. COOMBS.

THAMES.



PACIFIC HOTEL

(Opposite Bank New Zealand).

THAMES.

Good Accommodation. Excellent Table. BEST BRANDS OF WINES, ALES AND SPIRITS.

The proprietor guarantees what the label says the bottle contains.

W. L. DENNERLY Proprietor.



LADY BOWEN HOTEL.

THAMES.

ONLY BEST BRANDS OF WINES, SPIRITS AND ALES STOCKED.

FRED. W. ROBINSON, Proprietor.

WHARF HOTEL.

THAMES.

JACK ROBINSON Proprietor.

Two minutes from Railway Station. Five minutes from Wharf. Tariff: 6s per day.

SALUTATION HOTEL.

MARY ST., THAMES.

HARRY BROWNLEE, Proprietor.

Only SPEIGHT'S ALE on Draught. Best Ale in Town.

WARWICK ARMS HOTEL.

THAMES.

MRS LA DETTE Proprietress.

Best of Ales, Wines, and Spirits kept. Campbell and Ehrenfried Ale on draught. All Colonial Bottled Ales kept.

GOVERNOR BOWEN HOTEL.

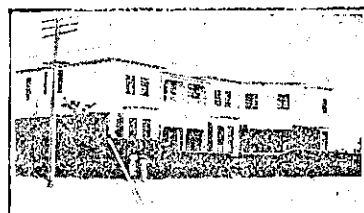
THAMES.

(Close to Wharf and Railway Station.)

FIRST-CLASS ACCOMMODATION. GOOD TABLE. ONLY THE BEST LIQUORS STOCKED.

T. R. NIXON Proprietor. (Late of Tauranga Hotel, Tauranga, and Carpenters' Arms Hotel, Auckland.)

TIMARU.



SEA VIEW HOUSE

(Private, TIMARU).

Four minutes from Post Office. Overlooking Caroline Bay. 35 rooms, including Billiard and Smoke Rooms. Hot and cold baths. Promenade roof with commanding view. Excellent Cuisine. Tariff Moderate. Phone 384.

MRS. HYMAN Proprietress.

THE DOMINION HOTEL.

TIMARU.

JOHN REILLY Proprietor.

The most modern and up-to-date Hotel in Timaru, overlooking Caroline Bay and the Harbour. Everything new inside and out. Absolutely fireproof. Electric light, and replete with every convenience. Bath-rooms, hot and cold water on every floor. Moderate tariff.

CLUB HOTEL.

TIMARU.

Close to Railway Station, and offering Excellent Accommodation to Travellers.

Liberal Cuisine. Hot and Cold Baths. Best Brands of Liquors Stocked. Moderate Tariff.

E. WARD Proprietor.

HIBERNIAN HOTEL.

TIMARU.

Best of Wines and Spirits, and Real Good Beer.

Comfortable Accommodation for travellers. Terms Moderate.

TURAKINA.

RAILWAY HOTEL.

TURAKINA.

Passengers by all trains have sufficient time to obtain refreshments at the above Hotel. Ales, Wines and Spirits, also Tea, Coffee, and Sandwiches, can be obtained.

The only place where liquor can be procured by railway passengers between Palmerston and New Plymouth.

THOS. HARVIE Proprietor.

WAIPIKUBAU.

TAVISTOCK HOTEL.

WAIPIKUBAU, HAWKE'S BAY.

The above Hotel has just been rebuilt and refurnished throughout, and is now replete with every convenience. Waipukurau is the noted health resort of the province. Good fishing and shooting. Excellent Accommodation for the Travelling Public.

DONALD McLEOD Proprietor. (Late Whangarei and Feilding).

WAITARA.

WAITARA HOTEL.

WAITARA.

THE RECOGNISED HOUSE FOR COMMERCIAL TRAVELLERS.

FIRST-CLASS ACCOMMODATION FOR THE TRAVELLING PUBLIC, AT MODERATE TARIFF.

HOT AND COLD PLUNGE AND SHOWER BATHS.

NIGHT PORTER IN ATTENDANCE

Telephone, No. 7. P.O. Box 28.

Letters and Telegrams promptly attended to.

ALEX. KERR Proprietor.

MASONIC HOTEL.

WAITARA.

J. C. HARRINGTON Proprietor.

The leading house for Commercial and Tourists. First-class accommodation for the travelling public at a moderate tariff.

BEST WINES AND SPIRITS ONLY KEPT IN STOCK.

WAIPAWA.

COMMERCIAL HOTEL.

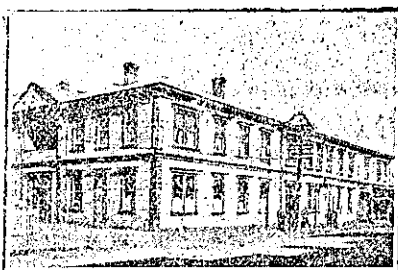
WAIPAWA.

Private Suites of Apartments and every Convenience for the Accommodation of the Public.

WINES, SPIRITS and BEER OF THE BEST QUALITY ONLY.

A FIRST-CLASS BILLIARD TABLE. Stabling and Paddock Accommodation.

W. PELLOW Proprietor.



WHERE TO STAY IN WAIPAWA.

EMPIRE HOTEL.

The recognised House for Commercial Travellers. The most up-to-date Hotel in the District. Families and the general public can rely upon Excellent Accommodation. First-class sample rooms and stables attached to the Hotel.

TARIFF: 8s. PER DAY.

C. J. BARFORD Proprietor.

ISLINGTON PRIVATE HOTEL.

WAIPAWA.

(Under entirely new Management.)

The above House offers Excellent Accommodation to Travellers. Close to Railway Station. Tariff 6s per day.

F. A. DRAGER Proprietor.

URENUI HOTEL.

The last Hotel approaching King Country from New Plymouth. Splendid motor drive from New Plymouth. Ideal week-end House. Good beach. Everything good.

PHIL J. LANGLEY Proprietor.

BURTON BREWERY CO., LIMITED.

PALMERSTON NORTH.

ALES AND STOUT

IN BULK OR BOTTLE.

Brewed only from Choicest Hops and Malt.

To be obtained at all the PRINCIPAL HOTELS IN THE WELLINGTON DISTRICT.