

### LIVERY AND BAIT STABLES.

**CLARIDGE'S, LIMITED.**  
 J. BOSOMWORTH, Director.  
 165 CASHEL-ST., CHRISTCHURCH.  
 'Phone 634.  
 Taxi-cab and Touring Car Depot.  
 Taxis and Cars available any hour, Day or Night.  
 Livery, Bait and Commission Stables.  
 Four-in-hand Drags and every description of Carriages on Hire. Wedding and Picnic Parties well provided for.

**WAIKATO LIVERY AND BAIT STABLES,**  
 HAMILTON.  
 UP-TO-DATE PLANT.  
 GIGS AND HORSES FOR HIRE.  
 MOTOR CARS STORED.  
 H. R. JAMES ..... Proprietor.

**TATTERSALL'S NEW HORSE REPOSITORY.**  
 26 BARKER STREET  
 (Off Cambridge Terrace),  
 WELLINGTON.  
 All Classes of Vehicles and Horses on hire. Wedding Carriages, Gigs, Etc. Carriages and expresses meet all trains and boats on order. Well appointed loose boxes for horses  
 J. JOHNSTON ..... Proprietor.  
 'Phone 670.

**TATTERSALL'S LIVERY AND BAIT STABLES,**  
 EGMONT STREET, NEW PLYMOUTH.  
 J. W. WEST ..... Proprietor.

**FOR HIRE.** — Wedding Carriages, Hearses, Mourning Coaches, Open and Close Cabs, Hansoms, Brakes, Waggonettes, Single and Double Buggies (open or hooded). First-class Ladies' and Gents' Saddle Horses.  
 Horses Bought, Sold, or Exchanged.  
 Cabs meet all Trains. Orders and telegrams promptly attended to.  
 Waiting Room for Ladies.  
 Telephone No. 62.

**ROYAL MAIL COACHES TO MACRAE'S, &c.**  
**EMPIRE LIVERY STABLES,**  
 PALMERSTON.  
 Hacks and Vehicles of all descriptions always on Hire. Conveyances to meet Trains.  
 JAMES CHALLIS.  
 Telephone No. 4.

**REEFTON LIVERY STABLES,**  
 H. T. CRUMPTON, Proprietor.  
 Drags Meet all Trains. Saddle Horses. Gigs, Buggies, etc., on Hire.  
 Contractor for Globe Mine and Progress Mall, the Coach leaving the Stable at 2 p.m. daily.  
 Telephone No. 4.

**RUTLAND LIVERY STABLES,**  
 ST. HILL-STREET, WANGANUI.  
 VEHICLES OF ALL DESCRIPTIONS FOR HIRE.  
 RUBBER TYRED LANDAUS AND GIGS A SPECIALITY.  
 Cabs meet all trains. Clippings done daily. Telephone 120.  
**WINDELBURN BROS., Proprietors.**

**WALKER'S STABLES, BULLS.**  
 ALL TRAINS MET.  
 MOTOR CARS ON HIRE.  
 SADDLERY MANUFACTURED AND REPAIRED.  
 FORWARDING AGENT.  
 SAMPLE ROOMS.  
 J. E. WALKER .... Proprietor.

**MARTON HOTEL LIVERY AND BAIT STABLES,**  
 Coaches meet all Trains. First-class Stabling Accommodation. Reliable Horses and Gigs on Hire.  
 Clement-Talbot Motor Car at service of patrons. Terms on application.  
 Telephone No. 78.

**MANCHESTER STABLES,**  
 FEILDING.  
 Messrs. Richardson Bros., proprietors, assure the residents of this District that everything possible will be done to satisfy the requirements of the travelling public, and to earn the patronage of our clients. Horse-clipping. Cabs meet all trains. Orders and telegrams attended to. Telephone No. 83.  
**RICHARDSON BROS.,**  
 THE SQUARE, FEILDING  
 (At back of Manchester Hotel).

**THE STONE STABLES,**  
 TIMARU.  
 The most up-to-date plant in South Canterbury. Horses, Traps, Buggies, guaranteed for reliability.  
 40 h.p. Modern Touring Car for long or short journeys, with competent chauffeur in charge.  
 The Stone Stables have a name for reliability and moderate charges.  
**DOWNEY & McDONALD, Proprietors**

'Phone 24.  
**DALGLIESH AND McDONALD,**  
 THE UP-TO-DATE LIVERY AND BAIT STABLES,  
 HAMILTON.

Horses, Cabs and Buggies for Hire. Coaches meet all trains. Specials arranged for any part of the district.

**PULLAN, ARMITAGE & CO'S LIVERY STABLES,**  
 Albert and Wellesley Streets.  
**BRAKES, BUSES, AND EVERY DESCRIPTION OF VEHICLE FOR HIRE.**  
 Carriages for Wedding Parties a Speciality.  
 Horses Broken In, and Bought, Sold, and Exchanged.

**ROYAL STABLES,**  
 DERBY STREET, GISBORNE.  
 HORSES AND GIGS ON HIRE.  
 ALL VEHICLES FITTED WITH RUBBER TYRES.  
 W. LANDMANN ..... Proprietor.

**SADDLER, COLLAR, AND HARNESS MAKER,**  
 Anything in the Leather Line for FARMERS, SPORTSMEN, HORSEMEN.  
 High-Class Workmanship.  
 Repairs a Speciality.  
**J. MACKEY,**  
 CORNER ALBERT & WYNDHAM STS.  
**AUCKLAND.**

**SHOP FRONTS**  
 Have you considered the necessity of re-modelling your premises? If having the latest in AIR TIGHT SHOW CASES and up-to-date SHOP FRONTS.  
 Get an Estimate.  
**L. ARNOTT,**  
 SHOP AND OFFICE FITTER,  
 GLASS CASES AND CABINET MAKER.  
 Market Street, off Queen Street.  
 Auckland.  
 'PHONE 4093.

Jobbing Work Done at Shortest Notice. All Work Guaranteed. Estimates Furnished Free.  
**OFFICE FITTINGS**

**Brown, Barrett & CO'S**  
 DELICIOUS  
  
**GOLDEN BUTTERFLY**  
 BRAND  
**Pure Coffee**

**B. J. M. Kemp,**  
**MERCHANT TAILOR & GENTLEMEN'S MERCER.**  
 NEW SUMMER GOODS TO HAND, AND WELL WORTH INSPECTION, SO GIVE US A CALL WHEN IN TOWN.  
 Queen & Swanson Sts., Auckland.

### Fashionable Tailoring.

145 MANNERS ST., WELLINGTON.  
 Fashions in Clothes, as in Hats, are Continually Changing.

OUR TAILORING IS UP-TO-DATE. We can suit all tastes FOR HIGH-CLASS GENTLEMEN'S SUITS AND THE VERY LATEST IN LADIES' COSTUMES.

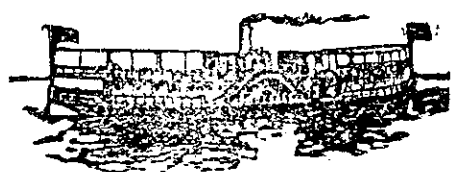
**ROSSE BROS.,**  
 LADIES' AND GENTLEMEN'S TAILORS,  
 145 MANNERS ST., WELLINGTON.

**THE ELECTRIC CONSTRUCTION COMPANY OF N.Z.**  
 HIGH STREET, AUCKLAND.

INSTALL—  
**ELECTRIC MOTORS, ELECTRIC LIFTS, ELECTRIC LIGHT, ELECTRIC FANS, ELECTRIC HEATERS, ELECTRIC BELLS.**

Office and Long Distance Telephones. We hold a complete stock of everything Electrical

Correspondence Invited.  
 Telephone 2551.  
 Telegraphic Address, "Thawbun."  
**G. L. THORBURN, Manager.**



**THE DEVONPORT STEAM FERRY COMPANY (LIMITED).**

**STEAMERS**—Eagle, Osprey, Britannia, Victoria, Takapuna, Birkenhead, Condor, Lyttelton, Albatross, Kestrel, Goshawk, Kawau and Ruru.  
 Steam Ferry Services to the Suburbs of DEVONPORT, NORTHCOTE, BIRKENHEAD and CHELSEA.  
 Steamers at short intervals daily from 6.30 a.m. to 11.40 p.m. Also all night service to Devonport.  
 Excursion Steamers run to the popular resorts—St. Heller's Bay, Lake Takapuna, and Pine Island—as notified in the daily papers.  
 Steamers on Hire for Excursions of any description and for extended trips. Comfortable Cabins, Every Convenience.  
**ALEX. ALISON, Manager.**

**NORTHERN STEAMSHIP CO., LTD.**

**TARANAKI SERVICE.**  
 The s.s. RARAWA leaves Manukau every Sunday, Tuesday and Thursday, reaching New Plymouth in time for the express train to Wellington. The steamer leaves New Plymouth every Monday, Wednesday and Friday evenings at 8.30 p.m., on arrival of the through train.

Drink  
**Peerless ALE**  
 Made from Pure Malt and Hops. Naturally Matured For Purity and Quality Unexcelled.  
**INVALID STOUT**  
 A SPECIALITY  
**C. L. INNES & CO.,**  
 Limited,  
 HAMILTON.  
 Brewers, Bottlers, and Aerated Water Manufacturers.  
 Branches—Hamilton and Waihi.  
 Aerated Waters—Taumarunui.

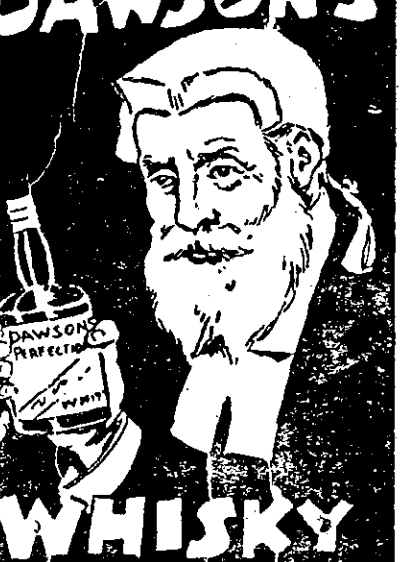
**Insure with the New Zealand Insurance Co. Ltd.**  
 THE PREMIER COLONIAL COMPANY.  
 Subscribed Capital - £1,500,000.  
 Reserve and Re-Insurance Fund £420,000.  
 Total Gross Assets - £1,110,163.  
 Fire, Accident, Sea, Live Stock, Trustee and Executor.  
 All Particulars on Request.  
 The  
**New Zealand Insurance Co., Ltd.**  
 Auckland. H. K. Kissling, Manager

Telephone 4234.  
**H. J. COOPER,**  
 CERTIFICATED  
**Sanitary Plumber and Gasfitter,**  
 Khyber Pass Road, NEWMARKET.  
 HOT AND COLD WATER FITTER, DRAINLAYER, ETC.  
 Estimates Given for All Branches of the Trade.  
 All Jobbing Work promptly attended to.

**POWER & CO.,**  
 LAND AND ESTATE AGENTS, HOTEL BROKERS, VALUERS, ETC.,  
 5, HALLENSTEIN'S BUILDINGS (Opposite Empire Hotel),  
**CHRISTCHURCH.**  
 List of Hotels for sale in future issue.  
 Write for particulars. Hotels and Properties for sale in all parts of the Dominion.

**CORNS**  
 You can dispose of your corns for 1/-.  
 Which would you rather have—your corns or the shilling?  
**Your Loss is Your Gain?**  
 You lose your shilling and you find comfort, restored good humour, and a thousand other joys.  
**TEED'S CORN CURE.**  
 All Chemists and Stores, 1/- Or Post Free Direct from Teed & Co., New Plymouth.

**ASSEMBLY HALL, ROTORUA.**  
 Seating Accommodation for 600 people Fitted with Electric Light. Charges Moderate.  
 For terms and full particulars apply to **STEELE BROS., Rotorua,** or "Sporting and Dramatic Review" Office.

**DAWSON'S**  
  
**WHISKY**  
 for Wellington district.  
**PEARSON & Co., Ltd., Sole Agents**

# Three Friends-



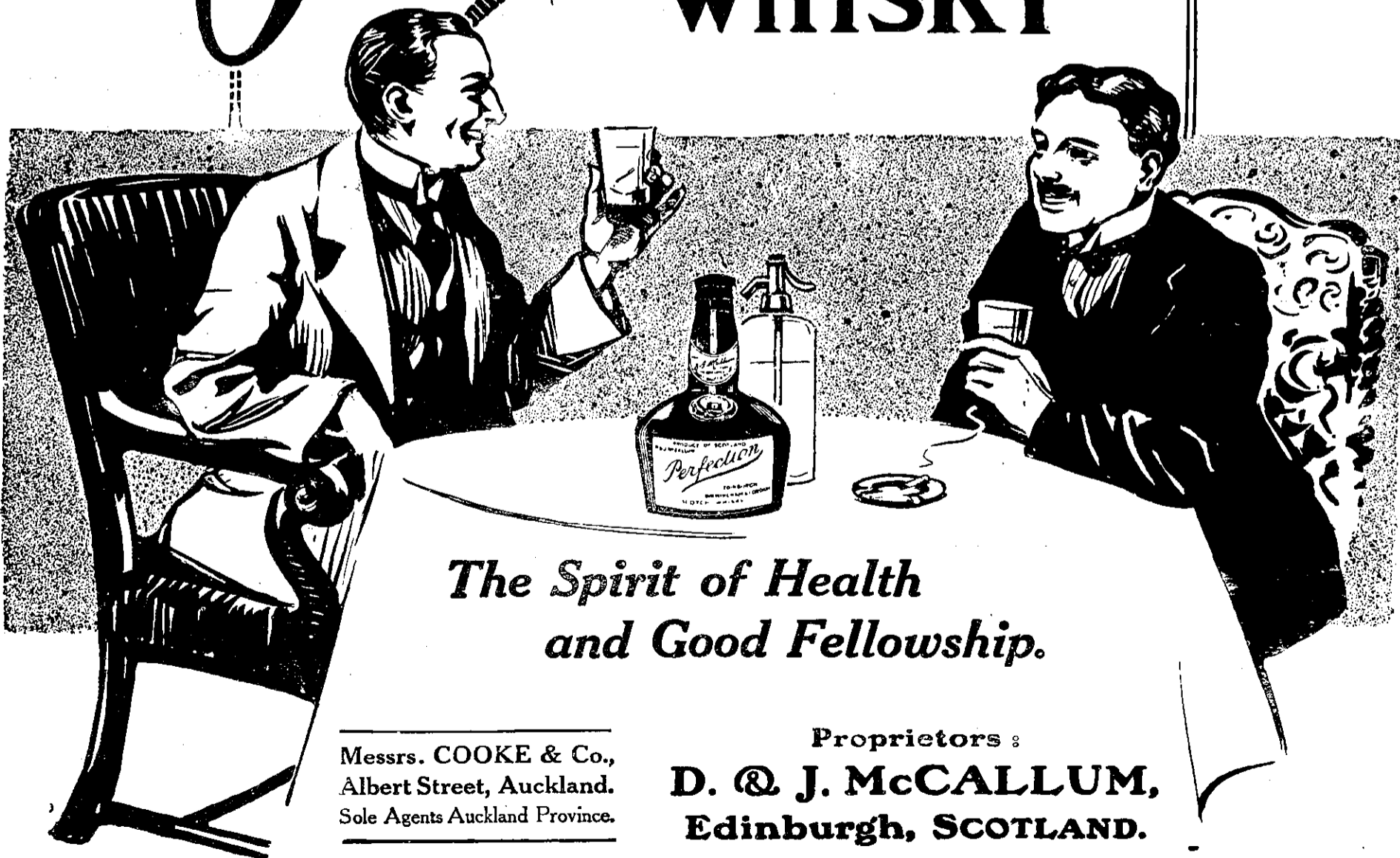
You and I,  
and a Bottle of

D. & J. McCALLUM'S



# Perfection

SCOTCH  
WHISKY



*The Spirit of Health  
and Good Fellowship.*

Messrs. COOKE & Co.,  
Albert Street, Auckland.  
Sole Agents Auckland Province.

Proprietors:  
**D. & J. McCALLUM,**  
**Edinburgh, SCOTLAND.**

**MISSING PAGE**

**MISSING PAGE**

**MISSING PAGE**

**MISSING PAGE**

**MISSING PAGE**

**MISSING PAGE**



**MISSING PAGE**

**MISSING PAGE**

**MISSING PAGE**

**MISSING PAGE**

**MISSING PAGE**

**MISSING PAGE**

**MISSING PAGE**

**MISSING PAGE**



**MISSING PAGE**

**MISSING PAGE**

**NORTHERN UNION GAME.**

E. Schofield, of Parnell, who represented Hull in Northern Union football during a couple of years' sojourn in the Old Country, and who returned to Auckland towards the end of last season, has decided not to play this year. Had his services been available the League game in Auckland would have gained a first-class exponent, as he is credited with many brilliant expositions of the Northern Union code during his residence in England.

Many rumours are afloat regarding leading Rugby Union exponents who intend throwing in their lot with the League players, but too much credence cannot be given to these reports, for the average footballer is a very changeable person in some respects. In a week or so's time the names of those Rugby players who will make their debut under the League banner this season will be divulged, and it is expected that the ranks of Northern Union football will be strongly augmented again this year. The League game promises to make rapid development both in Wellington and Christchurch this season, and a match is to be played early in May between the Wellington and Canterbury representative teams.

The Wellington Rugby League competitions will be opened on Saturday. Four teams are engaged in the senior competition and a like number in the junior championship.

**QUEEN'S THEATRE.**

QUEEN-STREET.  
Proprs., Messrs. MacMahon and Lodder.  
**GO WHERE THE CROWDS GO.**  
Daily 11 a.m. to 11 p.m.  
**TO-DAY—THURSDAY—TO-DAY**  
Messrs. MacMahon and Lodder Present  
Another Great Feature Drama,  
Entitled.  
**THE BRIDGE OF LIFE.**  
Thrilling and Realistic Circus Drama,  
Introducing a Bear.  
See the Peasants form themselves into a Living Bridge, over which the Woman crosses with her Child.  
**THINK OF IT! THINK OF IT!**  
Adults 6s. Everywhere Children, 3d.

**Globe Continuous Pictures,**

**THEATRE DE LUXE.**  
Direction: Hayward's Enterprises, Ltd.  
Open from 11 a.m. to 11 p.m.  
IT IS A BIT PERPLEXING to the stranger in Auckland when he reads the different Picture Show Advertisements, to determine WHICH IS THE BEST. A visit to our CHARMING PALACE will convince the most fastidious critic that the **GLOBE PICTURES ARE PARAMOUNT.**  
Dress Circle, 6d; Stalls Children, 3d. Reserved 1s.

**CHAS. H. GRAYLAND,**  
MECHANICAL ENGINEER,  
**LUKE'S LANE, WELLINGTON.**  
Cinematograph and Repetition work a speciality. Spools, Re-winders and Boxes in Stock. Quotations given for Motor Generator Sets.

**OPERA HOUSE.**

Direction ..... Brennan-Fuller, Ltd.  
Managing Director ..... Ben. J. Fuller.  
**BRENNAN-FULLER'S CIRCUIT.**  
Implies the Very Best in Vaudeville.  
A tremendous furore created by  
**DE LEA AND ORMA,**  
The Greatest of all Comedy Acts.  
(Season limited to six nights only.)  
Featuring Miss Orma in six feet of Comedy. One long roar of laughter.  
Direct from England.  
**EXCELLAS,**  
Jugglers Extraordinary.  
Direct from the Continent.  
**MARSDENS,**  
Modern Samsons.  
**CARL MERLYN, FARREL & VERROL,**  
**E. PITCHER, SLAVIN & THOMPSON,**  
**BLETSOE'S CRIMSON RAMBLERS.**  
D.C. and O.S., 2s; Stalls, 1s; Reserves, 2s 6d. Family Circle, 6d.  
Book Seats at Wildman and Arey's.

**POPULAR PRICES.**  
3s. 2s. 1s.

**HIS MAJESTY'S THEATRE.**

Lessee ..... C. R. Bailey.  
**VERSATILITY UP TO THE HILT.**  
**VERSATILITY UP TO THE HILT.**  
TO-NIGHT AT 8.  
TO-NIGHT AT 8.  
TO-NIGHT AT 8.  
**THE BRIGHTEST SHOW IN TOWN.**  
**THE BRIGHTEST SHOW IN TOWN.**  
**THE BUTTERFLIES.**  
**THE BUTTERFLIES.**  
This Week's Pianoforte Solo,  
Tone Poem—"Finlandia" (Sibelius)  
**MR. FREDERICK DENNETT,**  
With Full Orchestra, conducted by Mr. Jack Waller.  
Barcarolle from "The Tales of Hoffman."  
**THE HUNGARIAN BAND.**  
Sketch:  
"THE WORKING MAN AND THE SUFFRAGETTES."  
**BURLESQUES, COMEDY, PATHOS.**  
Box Plan at Wildman and Arey's.  
Day Sales at Walker's Phoneries, H.M. Arcade.

**NEW ZEALAND SPORTS PROTECTION LEAGUE.**

**AUCKLAND BRANCH.**  
**ANNUAL MEETING.**  
The Annual Meeting of the above League will be held at the CHAMBER OF COMMERCE, SWANSON STREET, On **FRIDAY, APRIL 25, AT 8 P.M.**  
All Members are requested to attend.  
**BUSINESS:** To receive Report and Balance-sheet, and to elect Officers.  
**F. W. EDWARDS,** Secretary.

**H. J. FREE & CO.,**  
LIVERY AND BAIT STABLES,  
TE KUITI.

G'gs, horses and buggies for hire. Proprietors of Royal Mail Coaches between Te Kuiti, Pio Pio, Aria and Maohenui.

**CITY COUNCIL ELECTION.**

**TO THE ELECTORS.**  
**LADIES AND GENTLEMEN,—**

We, the undersigned, beg to again offer our services as Councillors for another term.

We have confidence in again seeking your support, as we have during the past two years served you to the best of our ability, and we claim that good and faithful work has been done for the welfare of our city. The large amount of work now in hand (which has been already outlined by His Worship the Mayor through the Press), and the addition to the area under our control caused by Parnell and Arch Hill districts joining the city, will require careful attention, so that the Loans and Revenue may be expended to the best advantage.

The experience gained by our past services we again place at your disposal, and solicit your support at the forthcoming election, and, if elected, we will continue to use our best efforts for the benefit of the whole district.

We remain,  
Yours obediently,  
**M. CASEY, A. J. ENTRICAN,**  
**J. COURT, F. E. N. GAUDIN,**  
**J. C. GLEESON, P. M. MACKAY,**  
**G. KNIGHT, J. M. MENNIE,**  
**E. T. MICHAELS, G. E. READ,**  
**P. J. NEEHENY, J. TREVITHICK,**  
And **R. TUDEHOPE.**

**GREATER AUCKLAND COUNCIL.**

**VOTE FOR**  
**MR. JOE. F. MACMAHON**  
and you will  
**VOTE for ENERGY** in your Representative!  
**VOTE for ABILITY** in your Representative!  
**VOTE for INTELLIGENCE** in your Representative!  
**VOTE for INDUSTRY** in your Representative!  
**VOTE for FEARLESSNESS** in your Representative!

**THE CANDIDATE WITH A QUALIFICATION.**  
**MR. JOE. F. MACMAHON.**

**The SILVERKING GOLF BALL.**

**EVERY PLAYER CAN BE SUITED**



used by  
**The British Champions.**  
**H. Vardon, H. Hilton, J. Braid,**  
**J. H. Taylor, E. Ray, Etc.,**

used by  
**The New Zealand Champions.**  
**J. A. Clements, B. B. Wood, E. C. Butters,**  
**W. B. Simpson, H. Wright, etc.**

Stocked by all Professionals.

**Manufacturers—**  
**THE SILVERTOWN CO.**  
**165 Manchester St.,**  
**CHRISTCHURCH.**

**BARTON, MCGILL AND CO.,** Billiard Table Manufacturers (Gold Medalists), 422 Queen-street, Auckland. Requisites always in stock.

**BOVRIL**

by virtue of its body-building power fortifies the system against the attacks of illness.

By Appointment to  H.M. the King.

**Inspectors of**

That's what Alcock's experts ought really to be called. There is an Alcock expert in every centre: an attested specialist in Billiards and Billiard Tables.

**THE ALCOCK EXPERT** periodically inspects all Alcock Tables in his district, free of charge.

**WHY?**

Because Alcock's interest in the man who buys an Alcock Billiard Table does not cease when the Table is sold. It begins there. Alcocks are just as intent on keeping old patrons as they are in gaining new ones. An old client is the finest advertisement on earth—so long as he is kept satisfied.

**THAT IS WHY** Alcocks make it their business to give their patrons fullest advantage of the ripened experience and perfected knowledge on which Alcock's business is based. They give that advantage freely from the time the Table is sold until it is worn out.

*That's Business According to Alcock Principle.*

**Billiard Tables!**

Alcock's Branch Office and Show Rooms, Strand Arcade, Queen Street, Auckland.



**DUNLOP RUBBER HEELS**

These popular Heels are made of the best rubber for the purpose, and easily outwear two to three pairs of leather Heels.

Stocked in various shapes—Lady's and Gent's—at all leading Boot Shops. Only accept "Dunlops."  
**DUNLOP RUBBER CO.,** All States & N.Z.

# THE STAGE

## AUCKLAND FIXTURES.

### HIS MAJESTY'S THEATRE.

May 9 to 21—Branscombe Company  
 May 22 to June 7—J.C. Williamson, Ltd.  
 June 9 to 25—Geo. Marlow, Ltd.  
 June 26 to July 5—J.C. Williamson, Ltd.  
 July 7 to 19—Allan Doone  
 Aug. 4 to 16—J. C. Williamson, Ltd.  
 Aug. 28 to Sept. 27—Branscombe Co.  
 Oct. 1 to 11—J. C. Williamson, Ltd.

### PICTURE SHOWS.

Queen's Theatre (Continuous).

### OPERA HOUSE.

Fuller's Vaudeville

### HIS MAJESTY'S.

#### "THE BUTTERFLIES" SEASON

The high character and general excellence of the entertainment presented by "The Butterflies" at His Majesty's, is scarcely meeting with that recognition it deserves at the hands of the public. The programmes they continue to place before the public contain much that is new and diverting, every item being of a very enjoyable character. Grave or gay, they are alike acceptable to the audiences. The features of this week's programme are undoubtedly Mr. Fred Dennett's pianoforte solo, the Tone Poem, "Findlandia" (Sibelius), Miss Marion Armitage's dialect songs, Miss Ada Smith's charming vocal numbers and Mr. R. Foster Hine's spirited rendering of "Blow Thou Wintry Wind." Miss Cecilia Gold continues to charm all with the sparkling way she handles her songs, and she has to pay the penalty of popularity nightly. The "Dutch Dairy," aided by the "Butterflies" in characteristic costume, is perhaps the most popular. Miss Marion Armitage, the "lidy" comedian of the party, stands alone, her work being entirely out of the ordinary rut, and as clever as it is unique. "Tha' mun 'ear all," and "I want to be a 'lidy'" are two samples that convulse the audience, while a humorous sketch with Mr. Foster Hine, entitled "Wanted a Soprano," fairly brings down the house, Miss Armitage making the fun fast and furious. Mr. Wylie Watson makes good with his whimsicalities and quiet humour, while his cello solo, "The broken Melody," is one of the features of this week's programme. On Monday Mr. Jack Waller was unable to be present owing to indisposition, but the company proved they are equal to an emergency, and gave a bright, breezy entertainment notwithstanding, that was thoroughly appreciated at every turn. The aim of "The Butterflies" is to make their programmes merry and bright, and one has only to pay a visit to His Majesty's to know that they succeed in doing so.

### QUEEN'S THEATRE.

The Territorial Camp at Cambridge has been attracting packed houses all the week at the Queen's, a capital pictorial representation being given. A large number of interesting incidents were depicted with remarkable fidelity, familiarising the onlooker with life in camp. The review by His Excellency the Governor was among the features of an excellent series, and aroused keen interest. Two absorbing dramas, "Hereditary Taint" and "Affair at Raynor's," left nothing to be desired in the way of sensations or romance, and made a ready appeal to the sympathy of the public. "A Duckling's Diary" and "Excursion on Marazella Railway" proved highly interesting, while the humorous side was catered for with characteristic discrimination.

A new programme will be presented to-day, which will abound in star features, "The Bridge of Life" being the main attraction.

Miss Eugenie Duggan is to appear at the King's Theatre, Melbourne, next month in Victoria Cross's play "Life's Shop Window."

## OPERA HOUSE.

Patrons of vaudeville will find much to interest them at the Opera House this week, where a programme of excellent and clever turns, which do credit to both artistes and management, is being dispensed nightly. The "Ramblers" again occupy the initial part of the entertainment with a well selected and varied programme of fresh and original items. The comedian of the team, Mr. Albert Bletsoe, a great favourite, sang "The Old Banjo" in his inimitable style, while he is also seen to advantage in the trio "All the Girls are After Me." This item is distinctly good and is well received.

If they take their departure the audience is kept in hearty laughter. Miss Orma is perhaps the tallest lady seen on the "boards" in Auckland. The Excellas, a pair of clever jugglers, are good in their manipulation of tennis racquets, but the feature of a first class turn is the juggling of several racquets while on an unsupported ladder. The programme concludes with one of the best and most humorous turns ever provided. Carl Merlyn, a comedy illusionist, who brings off several smart tricks but spoils the effect by showing how they are done. Taken all round the entertainment is a high-class one and a visit to the Opera House this week is recommended.

## VAUDEVILLE ATTRACTIONS.

### THE BRENNAN-FULLER CIRCUIT.

#### ALWAYS ON THE LOOK-OUT.

"There's a good time ahead for vaudeville lovers" said Mr. D'Arcy Perry (the energetic young manager for Messrs. Fuller in Auckland), to a "Review" representative on Monday.

"Attractions and novelties will follow closely on each other for some months to come, and if variety, as they say, is the spice of life, the public will have no chance of stagnation as far as their vaudeville palates are concerned."

"Here is a bulletin, just issued in Sydney by Mr. Ben Fuller, managing director of the Brennan-Fuller circuit, which gives some interesting particulars of acts engaged and already appearing on the circuit, and which will be seen in New Zealand in due course."

Schepp's Animal Circus comes direct from America, where it is engaged showing as an attraction in itself. The circus consists of dogs, cats, monkeys, and ponies, and has proved a house filler in the leading Commonwealth cities.

Van Camp's educated pigs are another star attraction from America. They waltz, wrestle, jump hurdles, kneel, shake hands, fetch and carry, and perform various other evolutions.

Marville's cockatoos, twenty in number, are making their first appearance, and come direct from Europe.

Mysterious Mik, the mind-reading dog, is a beautiful little black Pomeranian, who does sums in arithmetic without seeing the figures, and also correctly describes any article held by a member of the audience and touched by his trainer. He can also give correctly the number or date on any bank note or ticket.

Fritz Von Liston is an operatic siffler and mimic who appears in Dutch costume.

Marie Esmeralda, the famous European xylophoniste, has created quite a furore in Australia. Miss Esmeralda features operatic overtures on the much-abused xylophone, one of her biggest hits being with the difficult "Semiramide."

Hugh Lloyd, the "king of the corde elastique," who was on the Fuller circuit some years ago, and has since been in America, is once again in Australia.

The Royal Banzai family of Japanese equilibrist, who carry a stage setting valued at some thousands of pounds, are at present in Adelaide.

The Mangleans, an American troupe of acrobats, and the Decars and Tomato, Continental pantomimists, are also on the circuit.

But perhaps the greatest attraction of all, and one sure to be appreciated by lovers of refined vaudeville in New Zealand, is Spencer Kelly and Marion Wilder, soprano and baritone respectively. Mr. Kelly and Miss Wilder are well and favourably known on the operatic stage in America (Mr. Kelly has played leading roles in all parts of the world), and their pre-



MISS ADA SMART,  
 The popular soprano from Drury Lane Theatre, London, now touring with  
 "The Butterflies."

by the audience. Miss Bessie Cahill, soprano, was in good voice and her singing of "Rosebud" was a fine effort. Mr. Lou Vernon is well received for his contribution, "A Chip of the Old Block," one of the collection. The concerted number "Six little boys from school" and the chorus song, "I can't help making eyes at a girl like you," were good, all the members of the company taking part. Miss Billie Wilson, a clever child impersonator, is loudly applauded for her singing of "Jammy Face." Mr. Jack Vincent was in good form in the baritone solo "Bedouin Love Song" and the first part of the programme is brought to a close with "Sarah's Hat," a humorous finale in which the whole company takes part. The second part of the entertainment opens with a budget of comicalities by Ernest Pitcher, an established favourite. The Marsdens are then introduced and an exhibition of muscular development coupled with feats of strength and hand balancing is interesting and entertaining. Two new artistes this week are De Lea and Orma and as rag-time merchants they are hard to beat. The turn is styled "Six feet of comedy" and from the time the artistes come upon the stage

### GLOBE THEATRE.

Anticipatory of the visit of H.M.S. New Zealand, the pictures of the battleship have been the centre of attraction at the Globe Theatre since Monday. Some excellent views of her arrival in Wellington having been secured. Detective stories never lose their allurements; and the exciting incidents in "Flesh and Blood" supply all the thrills that that type of drama demands, while as a photographic study, it was also particularly good. A fascinating love tale was disclosed in "The Awakening of Bianca," the old, old story being told through the happiest medium. Ostrich farming in England was illustrated in a series of admirable views, which were much admired, while the laughter provoked by the comic subjects showed they were highly appreciated.

A new series will be screened to-day, with special features.

It is stated that Herr Eyon Petre, one of the world's most famous pianists, is contemplating a tour of Australia and New Zealand in the near future.



MISS RITA FITZGERALD,  
 The clever soubrette of "The Dandies" company, opening at the Town Hall in May.

**MISSING PAGE**

**MISSING PAGE**

**MISSING PAGE**

**MISSING PAGE**



Says the "Bulletin":—It is notorious that Victoria's Licenses Reduction Board has improved the "temperance" aspect of social life by closing up unnecessary hotels, and those conducted in an unpleasant, undesirable, and sometimes illegal manner; that it is, in fact, doing more satisfactory work in one year than a dozen cold-tea fanatics could do in a score. Yet, one J. C. Martin—a parson, of course—now accuses it of "buttressing the trade by providing for seductive houses of entertainment." Apparently Martin wants places like Scott's, the Oriental, the White Hart, and Champion's wiped out, and the frowsy, unkempt beer-shops that used to disgrace the "little" city streets and lanes left untouched. At the same time, he probably wonders why fal-minded people have a whole-hearted contempt for the Wowser, and refuse to take him and his howlings seriously.

Statistics which show the average consumption per head of tobacco in various countries during 1911 place New Zealand half-way down the list. Holland, with 6.92lb, occupies premier position, followed by the United States, with 4.36lb. New Zealand, further down the list, is placed between New South Wales, 2.69lb, and Queensland, 2.65lb. Tasmania and South Australia come next, with 2.30lb, and 2.14lb, respectively, above Victoria, with 2.02lb. The United Kingdom is credited with 1.41lb, and Russia ends the list with 1.23lb. The chief source of supply is the United States, which in 1910, out of a total of 2,053,000,000lb, produced 1,103,410,000lb. Contrary to general opinion, Virginia is not the largest tobacco-growing State in the Union, Kentucky, with 303,000,000lb, producing more than twice as much as Virginia does. The ranks of the cigarette-smokers continue to increase yearly, and the number of cigarettes on which tax was paid during the last fiscal year in the United States of America totalled 11,239,000,000, an increase of 1,984,000,000 over the preceding year. New Zealand's imports of tobacco for 1911 totalled 2,786,000lb, on which duty to the amount of £592,000 was paid.

The following little story is related in a London paper, which points a moral to our wowser friends. "Last summer a couple of Northampton L.V.s were having a brief holiday at Blackpool. On the sands was a "Stiggins," fully equipped with tracts, umbrella, and wearing top hat with the black band, a white tie, etc. In a couple of seconds he was recognised as a teetotal lecturer, who had been trying to convince a crowd on the Northampton Market Square that they would all go to hell if they did not give up whisky drinking. To make sure of their man one of the L.V.s said to the lecturer: "Excuse me, but aren't you Mr. So-and-So?" "Yes," responded Stiggins. "Well," said the Northampton hotel proprietor, "I wish to thank you heartily for the advice you gave me as one of your crowd some years ago." The abstainer, naturally thinking he had reformed the man, said: "Of course you signed the pledge after listening to my address. How pleased I am to hear it." And then the tears ran down his florid cheeks. "Signed the pledge be hanged!" retorted the L.V. "No such thing. I had my place done up, got more business, banking account increased, and today I have all these," pointing to his gold watch and chain, diamond pin, and rings, "And," he added, "I have a cob at Northampton." "Stiggins" tried to get a few words in, but the L.V. continued: "Don't you remember saying, 'Look at the publican, he can have his gold watch and chain, his diamond rings, and his fast-trotting cob?' Well, I say, I took your advice, I profited by it, and today I have all those, but at the same time I have given good value for money, paid up all Lloyd George's unjust demands, and never gone out seeking customers or interfering with other peoples' freedom."—"Verb sap."

Mr. "Wet": "Allow me to congratulate you."  
Mr. "Dry": "What for?"  
Mr. "Wet": "Oh, for just anything—the sunshine, the blue skies, the fact that you are up and about. Isn't that something?"  
Mr. "Dry": "No!"  
Mr. "Wet": "Then congratulate me for not having a disposition like yours."

INN ON THE SLANT.

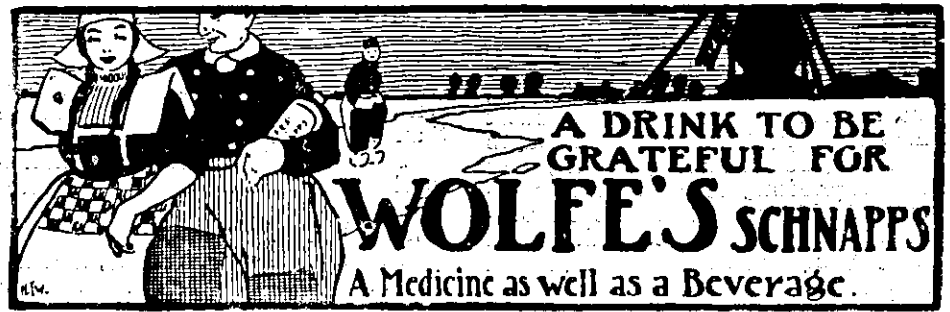
Droitwich is the place of invalids, brine baths, and sinking houses. The sinking houses are apt to give the most temperate man the impression that he must have dined "not wisely, but too well" the previous evening. The whole, needless to say, is a case of cause and effect, the foregoing being the effect and the cause the streams of brine, which exist at a depth of about 200ft below the surface of the town. At the "Waggon and Horses" in High-street, Eng., this is particularly noticeable. From one room into another there is a drop of over 3ft, and a table which is apparently slanting uphill is really slanting down. The whole house sinks on one side at the rate of a little over an inch a year. You don't notice the tilt so much because the whole street is sinking at the same time. The strangest effect, perhaps, is to be seen in the bedrooms of the inn, where the castors have been taken off one end of the bedsteads, and blocks of wood nearly 6in deep placed under the other end, and, as an additional precaution, the bedsteads are tied securely to the wall. Before that was done it was no uncommon thing to go to bed at one end of the room and to wake up at the other. A plumb line dropped from the upper bedroom windows to the ground is the only way really to tell from the outside that anything is the matter. The house is equally well known now as the "Crooked House"; in fact, it is to-day one of the sights of the town. Its proprietor, Mr. A. F. Kench, has been secretary of the local L.V.A. for 14 years, and was previously president and vice-president. He has occupied the house for the past 20 years.

HOTELKEEPERS' PARTIES.

When a licensed Victualler wishes to entertain guests after hours it is always well to give notice to the police. It saves such a lot of trouble and very often expense, and places the license-holder at his ease. Had Mr. A. J. Wightman, landlord of the Harvey Hotel, Dover Road, Folkestone, thus acted (says London L.V. "Gazette" in a recent issue), he would not have been summoned for a breach of the Licensing Act for selling drink on his premises during prohibited hours, namely between 11 and 12 o'clock on Sunday night. Of course he had to enter into a full explanation. His wife had gone on a holiday, so he invited some of his male friends—customers at the house—to join him in a little sing-song after hours. The invitations appear to have been given at various times during the day, and those who participated had assisted him in a concert he gave some little time ago for the "Poor Children's Fund." The friends were invited to the livingroom, and although drink had to be brought from the bar, there was no evidence to show that a drop had been paid for. Mr. G. W. Haines, who appeared for Mr. Wightman, pointed out that it was laid down that the holder of a justices' license should not be liable to a penalty for supplying intoxicating liquor after hours of closing to private friends bona fide entertained by him at his own expense. In this case they were bona fide friends entertained by defendant at his own expense. The case was dismissed, but the Chairman pointed out that it would have been wise of the defendant if he had given notice to the police, who were quite justified in bringing the case before the Court.

THE REPROOF COURTEOUS.

María Mitchell, the famous astronomer, was once directed by her physician to use lager beer as a tonic. On the way to visit her sister, Mrs. Joshua Kendall, of Cambridge, Mass., she stopped at a saloon and purchased a bottle of beer and afterwards asked her brother-in-law to open it for her. The Mitchell family spoke among themselves after the Quaker custom. "Where did thee get this bottle, María?" questioned her sister. "At the saloon on the corner," replied Miss Mitchell serenely. "Why, María! Doesn't thee know respectable women don't go into such places?" "Oh," said Miss Mitchell in the manner of one who has done all that could be required. "I told the man after I bought it that he ought to be thoroughly ashamed of his traffic."



A DRINK TO BE GRATEFUL FOR  
**WOLFE'S SCHNAPPS**  
A Medicine as well as a Beverage.

IMPERIAL ALE

for a Thirsty Man.

Nothing so Invigorating,  
Nothing so Enjoyable,  
Nothing so Pure, as

IMPERIAL ALE.

The Ale of Quality.

Hancock & Co., (N.Z.) Ltd.

If You are interested in  
**Tobacco Cigars Cigarettes**

or any Smokers' Requisites allow us to submit Prices when next you are Buying.

- Colmado Cigars - 15s per 100
- Ideal Rothschilds - 19s 6d "
- Star of Cuba - 23s 6d "

(A Choice, Heavy Cigar)

These are our Exclusive Brands.

**HUTCHINSON BROS., Ltd.**

Custom Street THE UNIVERSAL PROVIDERS. Khyber Pass  
Queen Street 4 STORES. Ponsonby

**H. A. JARDEN & CO.,**

Stock, Land and Estate, Insurance and Financial Agents, Hotelbrokers, Etc., Licensed Landbrokers, Live Stock Insurance Agency,  
104 Hereford Street, CHRISTCHURCH.  
Sub-Agents: AUCKLAND, WELLINGTON AND DUNEDIN.

First-class Town and Country Hotels, Boardinghouses and businesses of every description for sale in all parts of the Dominion.

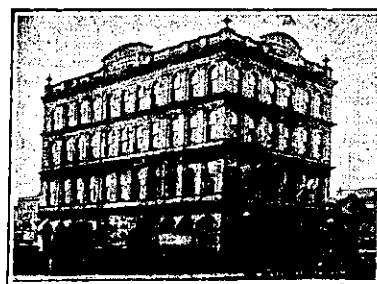
LAND TRANSFER DEPARTMENT.  
All Documents prepared under the Land Transfer Act on the lowest scale. This Department is under the supervision of our Mr. G. Lisle, late managing clerk for G. B. Ritchie, solicitor, of this city, for the past 16 years, which position he vacated to join our employ. Money to lend from £100 to £5000 at current rates on approved securities. All letters and telegrams receive immediate attention.

**H. A. JARDEN AND CO.,**  
104 HEREFORD ST., CHRISTCHURCH.

WHERE ALL SPORTS MEET.

**ANCHOR HOTEL**  
(Opposite the Town Hall),  
AUCKLAND.

C. F. MOLLOY ..... Proprietor.



**NEWMARKET HOTEL.**  
UNDER NEW MANAGEMENT.

F. MEYRICK ..... Proprietor.  
AUCKLAND.

**HOWICK.**

Visitors to this beautiful spot will find everything of the best at the  
**MARINE HOTEL.**

J. W. H. BRIGHT ..... Proprietor.

An ideal health resort.  
First-class Cuisine and Accommodation.  
Good stabling.

**WAVERLEY HOTEL.**  
QUEEN STREET, AUCKLAND.

Next to New Post Office, Railway Station, Motor Car Stand, and Wharf.  
First-class Table d'Hôte. Conveyance meets Steamers and Trains.  
Tariff: 8s per day; £2 2s per week.  
Telephone 370.

**FRANK TOWSEY & W. S. SLOANE,**  
Proprietors.

DRINK AND LONGEVITY.

The opponents of true temperance and liberty, the coercive teetotallers, are continually stating that the most moderate use of alcoholic beverages leads to the shortening of life, that it is interesting to know what independent thinkers make of their foolish contention. A statistical table lately published in a London journal gave particulars of the ages attained by those who refrain wholly from the use of these beverages, those also who use them in moderation, and those who abuse them by excess. The table was as follows:—

	Years.	Days.
1. Total abstainers	51	22
2. Habitual temperate drinkers	63	13
3. Careless drinkers	59	67
4. Free drinkers	57	58
5. Decidedly intemperate drinkers	53	3

It would be interesting, said the editor, to have the views of a few eminent physicians, like Sir James Barr, for example, on these results.

A MODERN INSTITUTION.

The public-house bar is a comparatively modern institution. Three centuries ago, when Ben Jonson and his merry crew met at the "Mermaid" in Cheapside or the "Devil Tavern," near Temple Bar, there was no such thing as a bar, the bumpers of sack or canary being brought by the "drawer" into a room almost as private as a modern club room. Later on the mug-houses were established, which were said to have helped to keep the Hanoverians on the throne, and these were followed by the Geneva shop satirised by Hogarth in "Gin Lane." The real era of the public-house dates from the prize fighting, roaring days of the Regency. And the saloon bar, the successor of the sanded parlour, where tradesmen sat and smoked their "churchwardens," is more modern still. For it was introduced in the West End in the early seventies at a hostelry, which was frequented by the gilded youth of the period, and even occasionally patronised by Royalty.—"Licensing World."

CLUBS SPELL COMFORT.

Some amusing remarks on clubs were made by Mr. Plowden, the well-known London magistrate, at a lecture to a Richmond Club. He belonged to two clubs, said Mr. Plowden, which were diametrically opposite in character. One was famous, with great traditions, but it was a terribly dull place. There was none of that "How are you, old fellow; what'll you have?" Many of the members never removed their hats, even, and when they were in the rooms scowled at any later arrival as much as to say, "How did you get in? It must have been by some awful fluke." One member had wittily said, "It is not a club at all; it is like the country house of a duke, with the duke lying dead upstairs." That was the club to which he went, said Mr. Plowden, when he felt particularly sulky or disagreeable. When he felt lively, and was enjoying life, he went to the other club, where they all sat down to dinner at the same time, and afterwards adjourned to the billiard-room and smoked. Everyone talked to his neighbour, and almost invariably found he had something interesting to say. Mr. Plowden advocated making the membership basis of clubs as wide as possible, and said that it was the English climate that made clubs necessary. Abroad, where they had a sunnier and more even climate, everyone went to the cafe. The people lived in the streets, and no class distinctions were required. A thief could sit down at a table next to a duke, and no one would be the wiser. A cafe spelt amusement, a club spelt comfort, so some supervision of the membership was essential.

WHY A WINE BOTTLE'S BOTTOM IS CURVED.

There is much more important reason for the dimple in the wine bottle than the usual idea of the wine purchaser, who feels that the manufacturer of the wine has used a bottle so that it will not require as much wine to fill it. The real reason is that wine cools more quickly, and the temperature of the entire bottle is made more nearly equal if there is a dimple in the bottom than if there isn't one. And a scientist has discovered that what works well in cooling will have precisely the same effect in heating, so that if a person desires to have a kettle or saucepan that will heat water more quickly than is ordinarily to be obtained, all that is necessary is to make a depression in the bottom. The discoverer of this fact has asserted that a quart of water may be boiled from the flame and heat of a burning newspaper if the water is placed in a covered vessel with an indented bottom.

AUTOMATIC BOTTLE MAKING.

An automatic bottle-making machine, invented and in use in Germany, is one of the triumphs of modern machine building. Doing the work of



MR. ROBERT AGNEW, the celebrated tenor of "The Dan-dies," opening in the Town Hall on May 10.

250 expert glass-blowers, it was considered such a menace to labour in Germany, where bottle-making is an industry of great magnitude, that the Government is said to have limited its use by rather stringent rules. The automatic making of bottles is accomplished through a great number of movable vacuum arms. A certain quantity of molten glass is drawn into the machine, air pressure is applied, and the glass is injected into an iron mould accommodating several bottles. This operation takes but a few seconds, then a device cuts the several bottles apart, the mould opens, and the bottles are automatically placed on a conveyer and transported to the cooling chamber. The machine can produce 2000 bottles an hour. The bottles are absolutely uniform in shape and capacity, exactly the same quantity of glass being blown into the mould, and they are delivered in an uninterrupted stream.

An enormous increase in the direct use of habit-forming drugs and in the use of raw alcohol united with Paregoric, cocaine, or laudinum has



The Lounge at head of Staircase.

followed in every locality where Prohibition has been adopted. Thus the attempt to enforce abstinence upon the man who wants to drink is not only ineffective, but destructive."—Dr. Chas. B. Towns, in "The Century Magazine."

Mr. Harris, of the National Licensed Victuallers' Defence Association, England, recently told the members that he was sure they would find the Trade again fighting for its very existence within the next 18 months. The Government, he said, was very vindictive, and had never forgotten the way in which the unjust Licensing Bill was "returned" by the Lords, and was only waiting to once more introduce a measure of so-called temperance reform. No body of people wished to see drunkenness decrease more than the licensed victuallers themselves, but why the Radicals should persist in harassing and worrying them on every conceivable occasion puzzles fair-minded individuals. The main thing, however, was that licensed victuallers should be on their guard.

**RHEUMATISM**

THE GREAT ENGLISH REMEDY for Gout, Rheumatism, Sciatica, Lumbago, Neuralgia, is

**Blair's GOUT AND RHEUMATIC PILLS**

They Never Fail. They Always Cure.

The true safe remedy for Gout and Rheumatism that has stood the test of time.

Sold in boxes at 1s and 2s 6d of All Chemists and Stores, and 229 Strand, London, England.

**GOUT**

**MAUKU HOTEL,** PATUMAHOE (Six miles from Pukekohe). T. B. BAILEY ..... Proprietor. GOOD ACCOMMODATION. WINES AND SPIRITS OF THE BEST.

FINE WHOLESALE AND RETAIL 'UPPER'

**ERNEST E. LEANING,** 24 & 26 Wakefield St., Auckland (Opposite Town Hall). Write for SELF-MEASURING FORM. A single Pair at Wholesale Price. INSPECT OUR FINE STOCK OF PURE LEATHER BOOTS



Country Orders receive Prompt Attention.

THE BEST PLACE TO STAY

**'The Royal'** PALMERSTON NORTH. TARIFF, 8s 6d PER DAY. Special Terms to Commercial & Professionals. Situated close to the G.P.O. and Opera House. Large and Well-appointed Commercial and Writing Rooms. Sample Rooms Adjacent. Luggage Van Meets All Trains. A. H. ROGERS .. Proprietor.

**On The Farm**

**WOLFES'S SCHNAPPS**

Is kept on hand Helpful in KIDNEY & BLADDER TROUBLES.

**MOWBRAY & GORRIE,** Late J. M. AND J. MOWBRAY. (Established 1868.) HOTEL BROKERS AND VALUERS, SHAREBROKERS, LAND, MINING, AND FINANCIAL AGENTS. OFFICES, ONE DOOR ABOVE "STAR" OFFICE, 22 SHORTLAND ST., AUCKLAND.

IT'S SALE-TIME AT DICKSON'S

£5000 WORTH OF HIGH-GRADE MEN'S CLOTHING, MERCERY, HATS, ETC., MUST BE SOLD TO MAKE ROOM FOR NEW GOODS ARRIVING.

100doz. Men's Neglige Shirts, worth 4s 6d and 5s 6d—Dickson's Sale Price, 2s 6d each. Best Shirt value in this Dominion.

30doz. English Fur Hard Hats, best quality, usual prices 10s 6d, 12s 6d—Sale Prices, 8s 6d, 10s 6d. You can't buy better hats in the city at any price.

25doz. Special Quality Pyjamas, usual prices 7s 6d, 8s 6d, 9s 6d, 10s 6d, 12s 6d—Sale Prices, 5s 11d, 6s 11d, 7s 11d, 8s 11d, 9s 11d.

140 Ready-to-wear Suits, perfect fitting, Dominion Brand Suits, all sizes, usual prices, 49s 6d, 55s, 63s—Sale Prices, 39s 6d, 45s 6d, 49s 6d.

Overcoats—Lightweight, Raincoats and Warm Woolly Winter Coats at Bargain Prices. Usual prices, 42s 6d, 49s 6d, 55s, 63s—Sale Prices, 35s, 39s 6d, 47s 6d, 55s.

GLOVES, BAGS, RUGS, TIES, COLLARS, BRACES, UNDERWEAR, SOX, UMBRELLAS, ETC., ETC., MUST BE CLEARED.

SALE NOW ON.

BUY NOW AND SAVE MONEY!

**DICKSON'S** SALE FOR MEN. CORNER QUEEN AND FORT STS., AUCKLAND.

**KOHN'S** We are so far Ahead for Values. WE ARE LONESOME Gems and Precious Stones of all kinds. Rings, Watches, and Silverware. Finest Selections in Auckland. WRITE FOR CATALOGUE. 178 QUEEN STREET.

NEW ZEALAND HOTEL DIRECTORY.—PATRONISED BY HORSEMEN, CYCLISTS, MOTORISTS, SPORTSMEN, COMMERCIAL TRAVELLERS, AND THE THEATRICAL PROFESSION.

**C and E.**

**DOMINION ALE.**

=

- We -

**Olde Inn Ale**

---

Our Watchword is

**Purity.**

THE

**CAMPBELL & EHRENFRIED CO.**

LIMITED.

Albert Brewery - Auckland.

**The Great Defender.**

**Hearne's Bronchitis Cure.**

**Hearne's Bronchitis Cure**

Those who have taken this medicine are amazed at its splendid healing power. Suffers from Bronchitis, Cough, Croup, Asthma, Hoarseness, Difficulty of Breathing, Pain or Soreness in the chest, experience delightful and rapid relief, and to those who are subject to Colds on the Chest it is invaluable, as it effects a complete cure. It is most comforting in allaying irritation in the Throat and giving Strength to the Voice, and it neither allows a Cough or Asthma to become chronic nor Consumption to develop. Consumption is not known where "Coughs" have, on their first appearance, been properly treated with this medicine. No house should be without it, as taken at the beginning, a dose or two is generally sufficient, and a complete cure is certain.

**Sold by all Chemists and Medicine V**

**AUCKLAND.**

**KIDD'S COMMERCIAL HOTEL.**  
CORNER HIGH AND SHORTLAND STREETS.  
AUCKLAND.  
SPEIGHT'S XXXX ALE ALWAYS ON TAP.  
WALTER KING ..... Proprietor.

**HOBSON HOTEL,**  
CORNER HOBSON AND VICTORIA STREETS. AUCKLAND.  
W. HOWE ..... Proprietor.  
(Late Cabbage Bay).  
EVERYTHING UP-TO-DATE.  
LIQUORS THE BEST.  
Phone 1993.

**CAPTAIN COOK HOTEL,**  
KHYBER PASS, NEWMARKET.  
D. RODGERS ..... Proprietor.  
BEST OF WINES, ALES AND SPIRITS.

"CAED MILLE FAILTHE"  
(Hundred Thousand Welcomes).  
**SHAMROCK HOTEL.**  
WELLESLEY ST., AUCKLAND.  
(One minute from Fuller's Opera House and Hayward's Pictures.)  
Telephone 2147.  
Secombe's Famous XXXX Lion Ale.  
All Liquors as fresh as the latest news.  
W. CANNER ..... Proprietor.

**MASONIC HOTEL.**  
DEVONPORT.  
H. G. JONES ..... Proprietor.  
Best brands of Wines and Spirits only kept in stock, and fine accommodation for boarders. Tariff moderate.

**HIBERNIAN HOTEL.**  
QUEEN-STREET, ONEHUNGA.  
First-class Accommodation. Only best Wines and Spirits stocked.  
Tariff, 6s 6d per day.  
MRS H. DINGLE ..... Proprietress.

**THE ALBERT HOTEL,**  
QUEEN-STREET, AUCKLAND.  
JOHN MORRISON (late of the Metropolitan) having taken over the above well-known and popular Hotel, wishes to notify his friends and the public that every attention will be paid to the comfort of guests.  
Only the choicest brands of wines and spirits stocked.  
Phone 503.  
JOHN MORRISON ..... Proprietor.

**SHAKESPEARE HOTEL.**  
ALBERT-STREET, AUCKLAND.  
D. COOPER ..... Proprietor.  
ONLY THE BEST WINES, ALES AND SPIRITS ON DRAUGHT.

**OCCIDENTAL HOTEL.**  
VULCAN LANE.  
AUCKLAND.  
MRS N. LYNCH ... Proprietress.  
(Late of Clarendon and City Hotels, Auckland.)

**CALEDONIA HOTEL,**  
Corner of KARANGAHAPE ROAD and SYMONDS STREET.  
CAMPBELL-EHRENFRIED'S SPARKLING ALE ON DRAUGHT.  
Ales, Wines, and Spirits of the BEST BRANDS ONLY, and all true to label.  
C. W. DUNMORE ... Proprietor.

**STAR HOTEL, OTAHUHU.**  
The Best Wines, Spirits, Beers and cigars. All the Comforts of a Home and a Good Table. Charges Reasonable, and Civility the Rule of House. Commodious Stables. Good Paddocks. Billiards.  
T. C. GRIFFIN ..... Proprietor.

**AUCKLAND.—Continued.**

**GLEESON'S HOTEL,**  
Corner Custom-street West and Hobson-street, AUCKLAND  
VICTOR CORNAGA .... Proprietor.  
Wines and Spirits of the Best Brand only kept in stock.  
First-class Accommodation for the Travelling Public.

**SUFFOLK HOTEL,**  
COLLEGE ROAD, AUCKLAND.  
A. W. EDWARDS ..... Proprietor.  
BEST BRANDS OF WINES AND SPIRITS ALWAYS ON HAND.

**IMPERIAL HOTEL,**  
FORT STREET, AUCKLAND.  
Absolutely only the Best Wines and Spirits kept in stock. Tariff Moderate. Telephone No 420.  
JOHN KELLY ..... Proprietor.

**WAITEMATA HOTEL.**  
Corner QUEEN and CUSTOM STS., Auckland.  
Close to the Wharf and Railway Station.  
Telephone 589.  
Visitors will find every comfort and convenience.  
JOHN ENDEAN ..... Proprietor.

**CRITERION HOTEL,**  
OTAHUHU.  
Good Accommodation for the Travelling Public.  
Replete with every Modern Convenience.  
Only the Best Brands of Wines, Ales, Spirits, etc., kept in Stock.  
W. J. WILLIAMS ..... Proprietor.

**PRINCE ARTHUR HOTEL,**  
CORNER WELLESLEY AND HOBSON STREETS, AUCKLAND.  
First-class Accommodation. Terms moderate. Trams pass the door.  
FRED. C. BASS ..... Proprietor.  
(Late U.S.S. Co. and Northern Wairoa Hotel.)

**THISTLE HOTEL,**  
QUEEN-STREET.  
SPEIGHT'S BEER ONLY ON TAP.  
BEST WINES AND SPIRITS.  
THE BRIGHTEST AND BUSIEST HOUSE IN THE CITY.  
MAURICE O'CONNOR, PROPRIETOR.

NEW ZEALAND HOTEL DIRECTORY.— (CONTINUED). — PATRONISED BY HORSEMEN, CYCLISTS, MOTORISTS, SPORTSMEN, COMMERCIAL TRAVELLERS, AND THE THEATRICAL PROFESSION.

AUCKLAND—Continued.

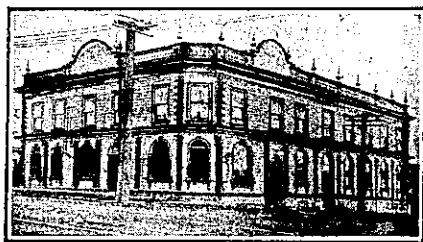
WANTED KNOWN TO ALL THAT  
C. McMANUS  
HAS TAKEN OVER THE  
CLARENDON HOTEL,  
UPPER QUEEN STREET,  
AUCKLAND.

Give him a call.

**Metropolitan Hotel,**  
Queen Street.  
Auckland.

**M. BARRY,**  
Proprietor.

(Late of the Caledonian Hotel, Auckland, and Wanganui and Napier.)



**THE EDINBURGH CASTLE HOTEL,**  
UPPER SYMONDS STREET,  
AUCKLAND.

YOU CAN'T MISS IT—END OF SECTION.

H. A. LLOYD ..... Proprietor.



**WYNYARD ARMS HOTEL,**  
SYMONDS AND WELLESLEY STS.  
A. THOMAS ..... Proprietor.  
(Late Central Hotel, Cambridge.)

Good Accommodation for Visitors.  
Good Table. Moderate Charges.  
Secombe's XXXX Ale on Draught.  
Only the Best of Wines and Spirits Stocked.  
Phone 1327.

**MARKET HOTEL,**  
GREY-STREET,  
AUCKLAND.



JOHN QUINN, late of Royal Hotel, Thames, begs to inform his Thames, Paeroa and Waikato friends that he has taken over this Hotel. Bear in mind when you are visiting Auckland and require First-class Accommodation.

**STRAND HOTEL,**  
MECHANICS BAY, AUCKLAND.  
J. H. MOORE ..... Proprietor.  
(Late Proprietor Ohinemuri Hotel, Paeroa, for 12 years.)  
Best Brands of Ales, Wines and Spirits.  
MODERATE TARIFF.



**MANAIIA HOTEL,**  
MANAIIA.

The Commercial House of the district. Stopping place for coaches. First-class stabling. Good fishing.  
G. D. McKENZIE ..... Proprietor.

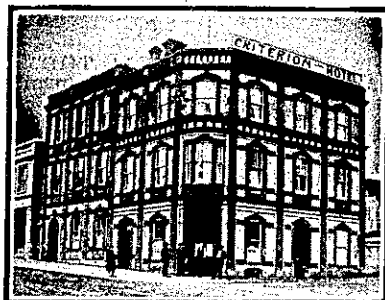
AUCKLAND—Continued.



**BRITISH HOTEL.**

Corner of DURHAM & QUEEN STS.

J. H. PAGNI (late Western and Oriental Hotels, Wellington), begs to invite all his friends and general public to inspect the new improvements at the above Hotel, which is now the most comfortable and up-to-date in Auckland. Visitors will find first-class accommodation. Nothing but the Best and Most Reliable Brands of Spirits, Wines, and Beer and Stout kept in stock. New Saloon Bar now open.



**CRITERION HOTEL,**

ALBERT STREET, AUCKLAND.

COMMERCIAL AND FAMILY HOTEL (NEWLY RENOVATED).

EXCELLENT WINES AND SPIRITS. Best Accommodation for Tourists.

D. J. MORRISON ..... Proprietor.



**ROYAL GEORGE HOTEL,**

D. T. DUNNE ..... Proprietor.

Remuera and Parnell Cars stop at door. Otahuhu and Penrose buses stop at door.

Good Accommodation to Country Visitors.

C. and E. Champion Ales on draught. Only Best Brands of Ales, Wines and Spirits stocked.

A Home away from Home.

AWANUI.

**AWANUI HOTEL.**

J. PEEBLES ..... Proprietor.

First-class Accommodation.

ONLY THE BEST OF LIQUORS STOCKED.

BLLENHEIM.

JOHN BARRY'S  
**MARLBOROUGH HOTEL,**  
BLLENHEIM

Good and substantial Accommodation with every comfort, at moderate charges. A favourite house for good whiskies and ales.

**EXCELSIOR HOTEL,**  
TIMARU.

Most centrally situated Hotel in Timaru. Adjoining Theatre Royal and Picture Theatre, near the G.P.O. and close to Railway Station. Tariff, 6s. 6d.  
W. N. JONES ..... Proprietor.

**RANGITIKEI HOTEL,**  
BULLS.

EXCELLENT ACCOMMODATION FOR THE TRAVELLING PUBLIC. THE CHOICEST BRANDS OF LIQUORS IN STOCK.

W. H. HOSKING ..... Proprietor.

WHERE TO STAY.

**POST OFFICE HOTEL,**

Broad St., PALMERSTON NORTH. Having acquired the above Hotel, visitors to Palmerston can rely on every comfort at a moderate tariff. All Wines, Spirits and Ales true to label.  
S. J. WHITEFORD ..... Proprietor.  
(Late Breakwater Hotel, New Plymouth).

CAMBRIDGE.

**MASONIC HOTEL,**  
CAMBRIDGE.

NEW AND UP-TO-DATE HOUSE, JUST REBUILT.

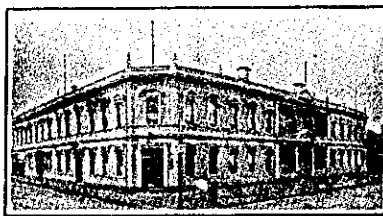
FIRST-CLASS ACCOMMODATION FOR TOURISTS AND TRAVELLERS.

LEADING FAMILY AND COMMERCIAL HOTEL.

TERMS, 8s., PER DAY.

J. FLEMING ..... Proprietor.

CHRISTCHURCH.



WHERE TO STAY IN CHRISTCHURCH.

**STOREY'S HOTEL.**

Right Opposite Railway Station. Convenient to all parts of City and Suburbs.

Electric Cars start from the door.

Proprietor ..... G. S. JAMES.

**KING GEORGE HOTEL,**  
HIGH-STREET, CHRISTCHURCH.

J. MEIKLE ..... Proprietor.

Newly erected with every modern comfort and convenience, at moderate tariff.

Visitors are assured of best attention. Nothing but the very best Wines, Spirits and Ales.

**THE SHADES,**

HEREFORD ST., CHRISTCHURCH.

This well-known Comfortable Hotel is in the heart of the City, and yet away from its noise and bustle. Country visitors will find it an ideal home at a moderate cost. "The Shades" has always been noted for its excellent liquors and ls. luncheon. Telegrams and letters promptly answered.

W. J. LARCOMBE ..... Proprietor.

**WHITE HART HOTEL,**  
CHRISTCHURCH.

UNDER NEW MANAGEMENT.

I have much pleasure in intimating to my friends and the public generally that I have taken over the above well-appointed Hotel, in the centre of Christchurch, and would respectfully solicit your patronage.

The White Hart has every advantage, being central, modern in construction, and well furnished.

Electrically lighted throughout, hot and cold water day and night on every floor. Day and night porters, and absolutely fireproof, and with a first-class billiard room and parlour for the pleasure of guests.

Wines, Spirits and Beers of superior brands. Letters and telegrams promptly attended to.

F. M. DREWITT ..... Proprietor.

**THE ROYAL HOTEL,**  
CHRISTCHURCH.

UNDER NEW MANAGEMENT.

Beautifully situated on the Bank of the Avon. Five minutes' walk from centre of City.

Trams pass the front entrances.

Superior Accommodation for Tourists and Travellers. Every known modern convenience.

Tariff, 8s per Day.

All communications immediately attended to.

P. HELMLING ..... Proprietor.



**STAR AND GARTER HOTEL,**  
CHRISTCHURCH.

Corner Barbadoes St. and Oxford Ter  
PAUL R. FLOOD, Proprietor. Everything first-class, and Ales, Wines, and Spirits are of the Highest Order.

**TATTERSALL'S HOTEL,**  
CHRISTCHURCH.

CASHEL STREET, TRIANGLE.  
Telephone 214.

This well-known House needs no recommendation. Visitors always return to it.  
BEST LUNCH IN TOWN (from 12 to 2) ONE SHILLING.

FRANK GRIFFIN ..... Proprietor.

DANNEVIRKE

**MASONIC HOTEL,**  
DANNEVIRKE.

C. A. JENSEN ..... Proprietor.

FIRST-CLASS ACCOMMODATION FOR THE TRAVELLING PUBLIC. EVERY COMFORT AND CONVENIENCE.

DARGAVILLE.



**NORTHERN WAIROA HOTEL,**  
DARGAVILLE.

EVERY POSSIBLE CONVENIENCE FOR THE TRAVELLING PUBLIC. The BILLIARD ROOM is fitted with one of Alcock's Best Tables. Launches available for trips to the Wairoa Falls.

F. L. HODGES ..... Proprietor.

**THE CENTRAL HOTEL,**

DARGAVILLE.

(Close to Wharf and Railway Station).

Is now under the Management of

MR. S. THOMPSON.

And the Travelling Public will find it one of the most Convenient Houses in the District.

GOOD ACCOMMODATION.

Telegrams Promptly Attended to.

Telephone 34.

DRURY.

**RAILWAY HOTEL,**

DRURY.

FIRST-CLASS ACCOMMODATION. WINES, ALES AND SPIRITS THE VERY BEST.

C. G. TAYLOR ..... Proprietor.

DUNEDIN.

**CALEDONIAN HOTEL,**

WALKER-STREET, DUNEDIN.

FIRST-CLASS ACCOMMODATION. TERMS MODERATE.

THE BEST OF LIQUORS ONLY KEPT.

J. J. ROUGHAN ..... Proprietor.

**SHAMROCK HOTEL,**  
DUNEDIN.

TERMS MODERATE.

GOOD ACCOMMODATION.

CHAS. BURRELL ..... Proprietor.  
(Late Gilmer Hotel, Greymouth).

**WATSON'S HOTEL,**  
GRANIT.

The above well-known House has been entirely re-built, and is now open to guests. Visitors to Granity will find a New Building, New Furniture and New Stocks of the very best Wines and spirits.

Under the management of MR. C. E. HALL, the house is to be run on up-to-date lines.

**THE GROSVENOR HOTEL,**  
TIMARU.

THE LEADING HOTEL IN SOUTH CANTERBURY. PATRONISED BY TOURISTS AND COMMERCIALS. EVERY MODERN CONVENIENCE.

J. P. MURPHY ..... Proprietor.

**GISBORNE TAXI-CAR.**

Phone 461.

An up-to-date 40 h.p. B.H. Car for Hire any hour day or night. Location, Bank New South Wales.

Two cabs meet all trains and boats.

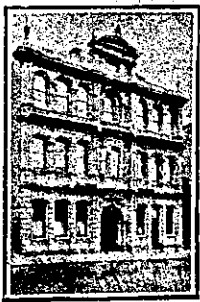
A. BARCLAY ..... Proprietor.

**NEW ZEALAND HOTEL DIRECTORY. — (CONTINUED). — PATRONISED BY WORKMEN, CYCLISTS, MOTORISTS, SPORTSMEN, COMMERCIAL TRAVELLERS, AND THE THEATRICAL PROFESSION.**

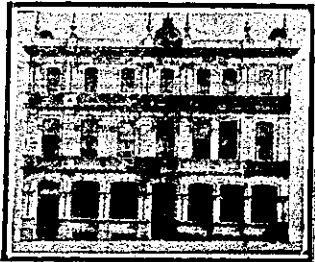
**DUNEDIN.—Continued.**

**GLADSTONE HOTEL,**

MACLAGGAN STREET, DUNEDIN.  
JOHN COLLINS ..... Proprietor.



The most centrally-situated Hotel in the City. First-class Accommodation for Tourists, Travellers and Boarders. Suites of rooms for Families. Charges moderate. A special feature: 1s. Lunch from 12 to 2 p.m. Hot Cold and Shower baths. The very best Wines, Ales, and Spirits supplied.



**PRINCE OF WALES HOTEL,**  
278 PRINCES STREET, DUNEDIN.  
Phone 721.

First-class Accommodation for the Travelling Public. Country Visitors will receive every attention. Terms moderate.

M. A. TUBMAN ..... Proprietor.



**CRITERION HOTEL,**  
DUNEDIN.

These premises having been entirely rebuilt afford every comfort for the travelling public. Electric light and elevator. Excellent cuisine. Terms moderate.

JAMES MURPHY ..... Proprietor.

**CITY HOTEL,**

PRINCES STREET, DUNEDIN.

This splendid centrally situated Hotel is undoubtedly the best appointed house in Dunedin, and specially suited for Tourists and Commercials.

TARIFF FROM 8s PER DAY.

P.O. Box 212.

Letters and Telegrams Promptly Attended to.

WM. A. WOODS ..... Proprietor.

**GRIDIRON HOTEL,**

PRINCES ST., SOUTH DUNEDIN.

Just above the G.P.O. Trams stop opposite Hotel.

Good Accommodation for Visitors and Travellers. Terms moderate. The Gridiron is known for its excellent liquors.

SAMUEL W. GEDDES, Proprietor.

**ELTHAM.**



**CENTRAL HOTEL,**  
ELTHAM.

GEO. W. TAYLER, ..... Proprietor.  
First-class Accommodation for the Travelling Public.  
Only the Best Brands of Wines and Spirits kept.

**CORONATION HOTEL,**  
ELTHAM.

The above Hotel has been thoroughly renovated, and, being under new Management, and giving every attention to business, begs to solicit a share of support from the surrounding district and travelling public.

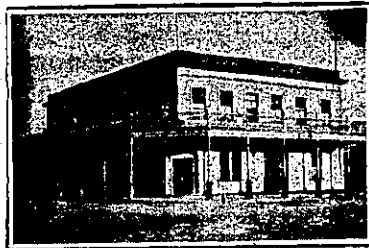
SPEIGHT'S ALE.

GOOD LIQUORS STOCKED.

Try the Coronation Hotel under

A. NEWMAN ..... Proprietor.

**FEILDING.**



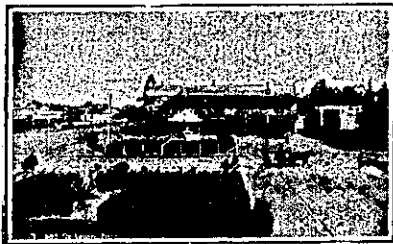
**EMPIRE HOTEL,**

FEILDING.

The above Hotel is opposite the Railway Station. First-class Accommodation for the Travelling Public.

TARIFF, 4s 6d PER DAY.

A. W. WHITEHOUSE .. Proprietor.



**HASTIE'S HOTEL,**

FEILDING.

UNDER ENTIRELY NEW MANAGEMENT. TARIFF MODERATE. REPLETE WITH EVERY CONVENIENCE. FIVE LARGE SAMPLE ROOMS.

THE MOST MODERN AND UP-TO-DATE HOTEL ON THE COAST.  
P.O. BOX 66. TELEPHONE 34.

F. W. ELLIS ..... Proprietor.

**FOXTON.**



**MANAWATU HOTEL,**

FOXTON.

PERCY LUMSDEN ..... Proprietor.

This House has been the recognised rendezvous of the Theatrical Profession. Visitors will find every Comfort and Convenience at this well-known house. ONLY the BEST BRANDS OF WINES, SPIRITS AND ALES STOCKED.

**GISBORNE.**

**BERT LUCAS**

(Next to Masonic Hotel),

GISBORNE.

Up-to-date Hairdressing Saloon. First-class Artists Employed.  
Best Brands Tobacco, Cigars, Pipes, Etc.

**MASONIC HOTEL,**

GISBORNE.

JOHN PETTIE ..... Proprietor.

First-class Accommodation for the Travelling public.

Cuisine second to none.

Only the Best Brands of Wines, Spirits and Ales, and all true to label.

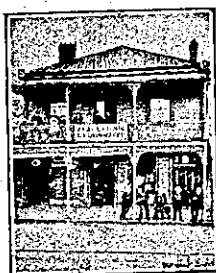
**TURANGANUI HOTEL,**

Close to Wharf, Railway and Post Office,  
GISBORNE.

RE-MODELLED AND RE-FURNISHED AND RENOVATED THROUGHOUT. Country Visitors and the Public will find this a most convenient Hotel, with Excellent Accommodation, Good Table and Airy Rooms.

TARIFF 6s PER DAY. Tel. 51  
B. H. AISLABIE ..... Proprietor.

**GREYMOOUTH.**



**CLUB HOTEL**

(Under Entirely New Management),

MAWHERA QUAY.

GREYMOOUTH.

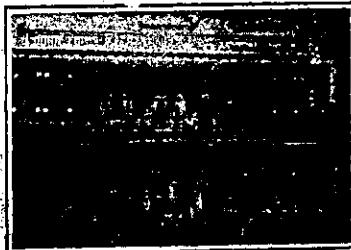
Right opposite steamer landing. Excellent Accommodation for the Travelling Public.

Only the Best Brands of Ales, Wines and Spirits kept. Hot and Cold Baths. Tariff, 6s. per day.

MRS. J. L. DOOGAN .. Proprietress.

**GREYMOOUTH.**

**THE ALBION HOTEL, GREYMOOUTH.**



Tel. Address:  
Albion, Greymouth.  
Phone 48. Box 30.

THE NEWEST AND MOST UP-TO-DATE HOTEL ON THE WEST COAST.

R. DUNPHY ..... Proprietor.

**SUBURBAN HOTEL,**

GREYMOOUTH.

(Semi-Private).

THE "SUBURBAN" IS THE NICEST HOUSE TO STAY IN AT GREYMOOUTH.

CLEAN, COMFORTABLE, REASONABLE AND NICELY ERECTED.

"OUT OF THE BARBERS."

ONLY THE BEST OF EVERYTHING KEPT.

MAURICE FITZGERALD, Proprietor.

**THE EMPIRE HOTEL,**

GREYMOOUTH.

Centrally situated between Railway Station, G.P.O., Municipal Buildings, and Wharf. The Empire Hotel offers the travelling public the most Comfortable Accommodation and a Good Table at moderate rates. The Empire being a "free house," patrons can rely upon getting the very best brands of Wines and Spirits and Draught and Bottled Ales.

Proprietor .. JAMES S. VIAL.

**DUKE OF EDINBURGH HOTEL,**

GREYMOOUTH.

(Corner of Albert and Hospital streets) Under New Management.

ARTHUR BROOKS, formerly of Ahaura, has taken over the above well-known and popular hotel and will be pleased to see old and new faces. Excellent Accommodation. Only the best of Wines and Spirits.

ARTHUR BROOKS .... Proprietor.

**GREYTOWN NORTH.**



**CLUB HOTEL,**

GREYTOWN NORTH.

R. DOHRN ..... Proprietor.  
(Late Union Co.)

Visitors can rely upon getting every comfort. Wines and spirits only the best.

**GREYTOWN HOTEL,**

GREYTOWN NORTH.

Mr. Sven Polson, late of Morrison's Bush, wishes to notify his friends and the public that he has taken over the above well known House. Visitors can rely on getting every attention. Only the best Wines and Spirits in stock.

S. POLSON ..... Proprietor.

**HAWERA.**

**CENTRAL HOTEL,**

HAWERA.

The above Hotel has been rebuilt, and is now open to guests.

Visitors and Travellers will find everything new, and can rely upon getting every comfort and attention.

Electric light throughout.

Every modern convenience.

MRS. M. CRAMP ..... Proprietress.

**EMPIRE HOTEL,**

HAWERA.

OFFERS FIRST-CLASS ACCOMMODATION TO THE TRAVELLING PUBLIC. WINES, ALES AND SPIRITS THE CHOICEST BRANDS.

TOM NEW ..... Proprietor.

"THE NEW ZEALAND MOTOR AND CYCLE JOURNAL" is the only paper published in the Dominion exclusively devoted to Motoring and Cycling pursuits. Published monthly. Price, Sixpence.—Arthur Cleave and Co., Ltd., Vulcan Lane, Auckland.

**HAMILTON.**



**ROYAL HOTEL,**

HAMILTON EAST.

Good Accommodation. Best Brands of Wines and Spirits. Good Stabling. Moderate Tariff.  
H. C. BAKER ..... Proprietor.  
(Late of Whangarei).



**HAMILTON HOTEL,**

HAMILTON.

J. B. HOOPER ..... Proprietor.

This Commodious and Up-to-date Hotel is replete with every modern convenience for the Comfort of Visitors.

The Cuisine is first-class. Tariff Moderate.

ONLY THE BEST OF LIQUORS KEPT IN STOCK.

**HASTINGS.**

**STORTFORD LODGE HOTEL,**

HASTINGS.

This House will make a speciality of stocking only the best Wines and Spirits. The Cuisine is under able management, and visitors and families will receive every attention. Eleven loose boxes, and paddocks. Tariff, 4s. 6d. per day.

E. A. GRENSIDE ..... Proprietor.

**THE PACIFIC HOTEL,**

HASTINGS.

ALF. ELLINGHAM ..... Proprietor.

FIRST-CLASS ACCOMMODATION FOR THE TRAVELLING PUBLIC. EVERY COMFORT AND CONVENIENCE.

**HAVELOCK.**

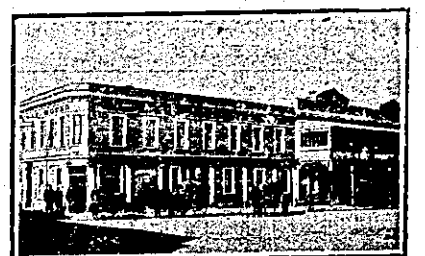
**MASONIC HOTEL,**

HAVELOCK.

Having taken over the above Hotel, I wish to notify the Residents of the District that I have stocked it with the best Liquors, Etc., and Customers can rely upon getting the brand they ask for.

A. GUSTOFSON, Proprietor.

**HOKITIKA.**



**KELLER'S HOTEL,**

HOKITIKA.

W. KELLER ..... Proprietor.

First-class Accommodation for the Travelling Public.

Only Best Brands of Wines and spirits kept.

BATSON'S HOTEL (late Exchange), Revell St., HOKITIKA. Situated in the heart of the town, two minutes walk from the Railway Station, one minute from the Post Office. Most up-to-date in every particular. The proprietor recently disposed of the Glacier Hotel at the Waiho, South Westland, which, during Mr. Batson's occupancy, was known to be the best equipped country hotel in Westland. Unrivalled accommodation at Batson's. Terms 6s per diem. Boarders by arrangement. Tel. 38. P.O. Box 13.—W. H. BATSON, Proprietor.

NEW ZEALAND HOTEL DIRECTORY. (CONTINUED.) — PATRONISED BY HORSEMEN, CYCLISTS, MOTORISTS, SPORTSMEN, COMMERCIAL TRAVELLERS, AND THE THEATRICAL PROFESSION.

**HOKITIKA.**



**RAILWAY HOTEL,**  
HOKITIKA.

First House from Railway Station. Good accommodation for the travelling public at moderate rates. The Railway Hotel is the most convenient for travellers of all classes, being practically at the station gates. The accommodation is good, and every comfort of guests is studied. Everything of the best is served and guaranteed.

HENRY JONES ..... Proprietor.

**HUNTLY.**

**HUNTLY HOTEL,**  
HUNTLY.

L. B. HARRIS ..... Proprietor.

This Hotel is now one of the largest in the Waikato. All trains stop at Huntly, and the Hotel is a few yards from the Station. First-class Accommodation and Excellent Table.

**INGLEWOOD.**

**INGLEWOOD HOTEL,**  
INGLEWOOD.

A. LAING ..... Proprietor.  
(Late of Woodville.)

FIRST-CLASS ACCOMMODATION FOR THE TRAVELLING PUBLIC. WINES AND SPIRITS OF THE BEST BRANDS ONLY.

**KAMO.**

**KAMO HOTEL.**

A. J. J. MEYER ..... Proprietor.

Good Accommodation for Visitors and Travellers. Best Brands of Wines and Spirits. Good Stabling and First-class Paddock.

**KIHIKIHI.**

**STAR HOTEL,**  
KIHIKIHI.

Good accommodation. Excellent fish. Best brands of wines and spirits. Hancock's Special XXXX. The renowned Throgmorton Whisky. Martell's Brandy. Coaches meet all trains, including night express North and South.

JOHN BONNER ..... Proprietor.  
(Formerly 5½ years Shakespeare Hotel, Auckland.)

**ALPHA HOTEL,**  
KIHIKIHI.

The above well-known Hotel offers splendid accommodation for Tourists and Travellers.

Motorists will find this an ideal House in which to obtain refreshments.

Only the best ales, wines and spirits in stock.

CHAS. O'BRIEN ..... Proprietor.

**LEVIN.**

**GRAND HOTEL,**  
LEVIN.

The above new and up-to-date Hotel of fifty rooms is now open to visitors. All conveniences. Everything of the best.

MRS. HIGGINS ..... Proprietress.

**MANAIA.**



**WAIMATE HOTEL,**  
MANAIA.

JOHN RUSSELL ..... Proprietor.

THE TOURISTS' RENDEZVOUS. SPLENDID ACCOMMODATION. FISHING AND SHOOTING.

**COMMERCIAL HOTEL,**  
MANAIA.

First-class accommodation for the Travelling Public at a Moderate Tariff. Only the best of Ales, Wines and Spirits kept in stock.

J. D. BASHFORD ..... Proprietor.

**MARTON.**

**MARTON HOTEL,**  
MARTON.

J. HANNAN ..... Proprietor.  
(Late of Makutuku).  
Begg to state he has recently taken over this popular House.

TARIFF MODERATE.

**CLUB HOTEL,**  
MARTON.

H. McMANAWAY begs to announce that he has taken over the Club Hotel, Marton.

ABSOLUTELY A FREE HOUSE. ONLY SPEIGHT'S BEER ON DRAUGHT.

**RAILWAY HOTEL,**  
MARTON JUNCTION.

Excellent accommodation. Night porter always in attendance. All Main Trunk trains met. Liquors true to label. Speight's Ales drawn from the wood. Phone 42. P.O. Box 7. Marton Junction.

C. E. GIBBONS ..... Proprietor.

**ARCADIA PRIVATE HOTEL,**  
MARTON.

Tourists and travellers will find here excellent accommodation. Motor car for hire.

J. G. BLACKWELL, agent for Stoeuer cars. Phone 150.

**MERCER.**

**RAILWAY HOTEL,**  
MERCER.

First-class Accommodation for Tourists and Travellers. Wines and Spirits of the best brands only kept in stock.

W. C. PICKETT ..... Proprietor.

**METHVEN.**

**THE METHVEN HOTEL,**  
METHVEN.

T. TWOMEY ..... Proprietor.

FIRST-CLASS ACCOMMODATION. BEST QUALITY OF WINES AND SPIRITS.

**CANTERBURY HOTEL,**  
METHVEN.

TO COMMERCIALS AND THE GENERAL PUBLIC FIRST-CLASS ACCOMMODATION IS OFFERED AT THE ABOVE HOTEL.

HUGH KENNEDY ..... Proprietor.

**NAPIER.**

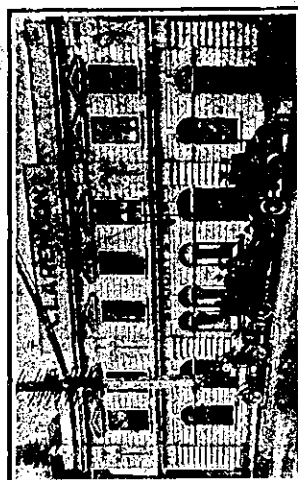


**CRITERION HOTEL,**  
HASTINGS-STREET, NAPIER.

An Up-to-date Hotel with every Modern Convenience. New Commercial Sample Rooms.

PERCY MARTIN ..... Manager.  
(Late Railway Hotel, Hastings).

**CLARENDON HOTEL,**  
Opposite Post Office, NAPIER.



This Hotel has been thoroughly renovated and is now open for the travelling public. The Best of Accommodation provided. Speight's Ale on tap. Best Wines, Spirits and Bottled Ales, Draught Whisky (Watson's XXX). Special Luncheon 12 to 1.30—One Shilling.

W. READING ..... Proprietor.

**CARLTON CLUB FAMILY AND COMMERCIAL HOTEL,**  
HASTINGS.

S. CHARLTON ..... Proprietor.  
P.O. Box 7. Phone 136.

**ALBION HOTEL,**  
NAPIER.

H. CLAUDE FOX ..... Proprietor.

**FERNHILL HOTEL,**  
MIDWAY BETWEEN NAPIER AND HASTINGS.

EVERY ATTENTION TO THE TRAVELLING PUBLIC. EVERYTHING OF THE BEST.

W. PUSCHELL ..... Proprietor.

**WAVERLEY HOTEL,**  
GREENMEADOWS.  
(Adjoining Napier Park Racecourse.)

MR. W. G. OAKENFULL.  
Begg to inform the Travelling Public that he has taken over the Waverley Hotel. Good Table, and the Best of Ales, Wines, Spirits, etc.

**EMPIRE HOTEL,**  
NAPIER.

The above Hotel has been thoroughly renovated and furnished throughout, and is one of the best hotels in Napier. Excellent Accommodation for the travelling public at a moderate tariff. Speight's beer on tap. Agents for McEwan's Scotch Ale, Lawson's Stout, Henke's Schnapps. P.O. Box 37. Tel. 266.

A. SELLAR ..... Proprietor.

**NELSON.**

**MASONIC HOTEL,**  
NELSON.

THE LEADING TOURIST AND COMMERCIAL HOUSE IN THE CITY. The MASONIC has recently been renovated throughout in the most modern style, and Mr. H. Baigent has resumed proprietorship, therefore clients will be assured that the catering will be to their entire satisfaction. Superior Brands of Wines, Spirits and Ales. Letters and Telegrams promptly attended to. P.O. Box 34. Telephone 38. Telegraphic Address, "Masonic," Nelson.

H. BAIGENT ..... Proprietor.

**THE GLOBE HOTEL,**  
NELSON.  
(Under New Proprietorship.)

The first house in Nelson from the Port. Beautifully situated, facing the Bay. Excellent Accommodation. Comfort and best of Liquors. Moderate Tariff.

J. B. JOHNSTON ..... Proprietor.

ASK FOR—  
**NELSON ALES**

From the FAMED **RAGLAN BREWERY** Prize Medalists in Melbourne, Sydney and N.Z. HARLEY & SONS, Brewers, Bottlers.

**NEW PLYMOUTH.**

**Grosvenor Hotel**

NEW PLYMOUTH.  
(Opposite Railway Station.)

Tariff: 6s. 6d. per day.  
£1 15s. per week.

W. J. WILLIAMS, Proprietor  
(Late of Feilding).

CRITERION HOTEL.



NEW PLYMOUTH.

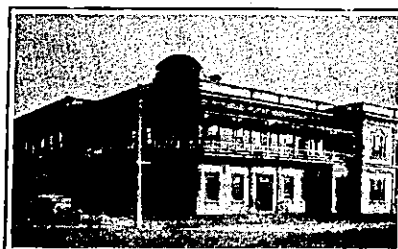
Being centrally situated, is unequalled for Tourists and Commercial Gentlemen. The Table is maintained at a uniform standard of excellence, and visitors can be certain of obtaining the best Menu in New Plymouth. Hot and Cold Baths always available. Sanitary appointments are well up to date. Night Porter in attendance.

J. McKEAN ..... Proprietor.  
P.O. Box 21. Phone No. 30.

**PALMERSTON NORTH.**



**PHOENIX HOTEL,**  
Rangitikei St., PALMERSTON N., is now under the management of S. PAUL. The house is being renovated to meet the ever-increasing trade, and every effort will be made to study the needs of the travelling public. Table under the special supervision of the Proprietor. Only Speight's Beer Drawn. Tele. No. 18



**EMPIRE HOTEL,**  
PALMERSTON NORTH.  
Every convenience at this Comfortable Hotel for Visitors and the Travelling Public. Tariff, 8s per day.

W. DEVINE ..... Proprietor.

**THE COMMERCIAL HOTEL,**  
PALMERSTON NORTH.

T. CHILDS ..... Proprietor.  
The Proprietor of this conveniently-situated Hotel having had the premises entirely renovated and remodelled, is prepared to receive travellers and the public generally, and guarantees strict attention, the best of Wines and Spirits, and trusts to obtain by these means a fair share of patronage.

**CENTRAL HOTEL,**  
PALMERSTON NORTH.

BERT H. KELLEHER ... Proprietor.  
The Hotel has been thoroughly renovated, and now offers first-class accommodation.

ALL LEADING BRANDS IN ALES, WINES AND SPIRITS KEPT.

**CAFE DE PARIS HOTEL,**  
PALMERSTON NORTH.

Every attention to Travellers. Only the Best Liquors.

J. S. FLETCHER ..... Proprietor.  
(Late of Central, Petone.)

**PRINCESS HOTEL,**  
TERRACE END, PALMERSTON NORTH.

The Travelling Public can rely on being supplied with the best liquors, comfortable bed-rooms, and first-class table. Finest Billiard Room and Table on the Coast. Terms moderate.

MACHESON ..... Proprietor.

**WHISKY?**

**SURE!**

BUT

**DANIEL CRAWFORD'S,**

PLEASE.

OBTAINABLE AT ALL HOTELS.

LANGGUTH & CO., Auckland, Wholesale Agents.

NEW ZEALAND HOTEL DIRECTORY. (CONTINUED) — PATRONISED BY HORSEMEN, CYCLISTS, MOTORISTS, SPORTSMEN, COMMERCIAL TRAVELLERS, AND THE THEATRICAL PROFESSION.

PAPAKURA.

**GLOBE HOTEL,**  
PAPAKURA.  
Proprietor. BOB PORTER .....  
The leading Commercial Hotel in the district. Excellent accommodation for tourists, travellers and visitors. First-class table always kept. All meals 1s. Wines and spirits of the best quality. Popular Lion Ale on tap. Every attention and comfort. Afternoon tea for morning parties a speciality. Good stabling and paddocks. Horses and traps for hire. Moderate tariff.

PATEA.

**MASONIC HOTEL,**  
PATEA.  
The Hotel has been recently renovated and refurbished throughout and offers first-class accommodation to travellers. TARIFF, 4s. 6d PER DAY.  
E. SMITH ..... Proprietor.

**THE ALBION HOTEL,**  
PATEA.  
FIRST-CLASS ACCOMMODATION FOR TOURISTS, FAMILIES AND TRAVELLERS. WINES, ALES AND SPIRITS OF THE BEST.  
J. A. COOGAN ..... Proprietor.

PICTON.

**OXLEY'S HOTEL,**  
PICTON.  
THOMAS GEARY ..... Proprietor.  
Visitors to Picton will find every modern comfort and convenience at the above hotel. Special attention is devoted to the comfort of patrons. The Hotel faces the wharf, and is near the Railway Station. Telegrams and letters promptly answered.

RAKAIA.

**RAILWAY HOTEL,**  
RAKAIA (opp. Station).  
JNO. AFFLECK (late of Awahura), having taken over the above Hotel from Mr. Ted Fox, wishes to notify his friends and public that every attention will be paid to the comfort of guests, who can also rely upon the quality of the brands of wines and spirits stocked, the best ales bottled and on draught.  
JOHN AFFLECK ..... Proprietor.



**SOUTH RAKAIA HOTEL,**  
(Opposite Bank New Zealand).  
RAKAIA.  
HARRY TAYLOR ..... Proprietor.  
Having taken over this Hotel again after an absence of three and a-half years, I cordially invite my old friends and the public generally to give me a call, which I shall much appreciate. The Travelling Public will find my Hotel comfortable, clean, with the best of Liquors and Ales, and the charges moderate.

REEFTON.

**STEVENSON'S HOTEL,**  
REEFTON.  
(Under Vice-Regal Patronage).  
Booking Office for Newman Bros. Westport and Nelson coaches, Cassidy and Co's Oira-Cass coaches. Coach leaves Hotel daily for Westport. For Nelson, Tuesdays and Fridays. P.O. Box No. 15. Telephone No. 32.  
W. A. STAPLETON, Proprietor.

**GLADSTONE HOTEL,**  
REEFTON.  
Excellent Accommodation for Travelling Public. All coaches from Railway stop at door.  
M. E. POWLEY ..... Proprietor.

ROSS.

**CITY HOTEL**  
(Late Pedrazzis), ROSS.  
The first house from Railway Station. Splendid all-round accommodation at moderate tariff. Pedrazzis was always noted for its superior quality of liquors.  
G. T. ADAMSON ..... Proprietor.

STRATFORD.



**CLUB HOTEL,**  
STRATFORD.  
C. DIAMOND (Late Albion Hotel, Patea). Desires to intimate to old friends and new that he has taken over the above popular hostelry. All liquors of the highest quality. Speight's Beer always on draught. First-class Accommodation for the Travelling Public. Tariff, 1s 6d per day.

SUMNER.

**THE SUMNER HOTEL**  
SUMNER.  
In the heart of the town, and a few yards from the Beach. Visitors to this seaside resort will find every modern comfort and convenience at this Hotel, which has been thoroughly renovated and brought up to date. Best of Wines and Spirits.  
ALF. C. HULLETT ..... Proprietor.

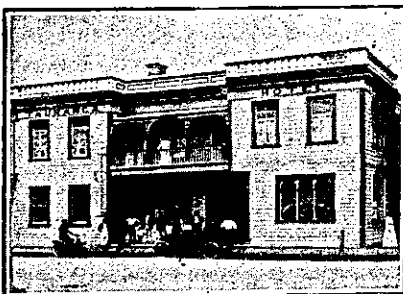
TAIHAPE.

**THE GREINA HOTEL,**  
TAIHAPE.  
MRS F. H. GIBBONS .. Proprietress.  
This well-known Hostelry has all the Comforts of a Home and Conveniences of a First-class Hotel. The premises are furnished with a view to the comfort of the public. Tariff, 8s per day. Good Sample Room. Best Brands only. Passengers called for early trains.

TAUPIRI.

**TAUPIRI HOTEL,**  
TAUPIRI.  
SPLENDID ACCOMMODATION. CLOSE TO RAILWAY STATION. THE VERY BEST LIQUORS IN STOCK.  
S. KEOGH ..... Proprietor.

TAURANGA.



**TAURANGA HOTEL,**  
TAURANGA.  
FIRST-CLASS CUISINE AND ATTENTION. ALES, WINES AND SPIRITS OF GUARANTEED QUALITY. Correspondence Promptly Attended to. P.O. Box 37. Telegraphic Address: "Tourist," Tauranga.  
SAMUEL TANNER ..... Proprietor  
(Late of Waihi).

TE AUTE.

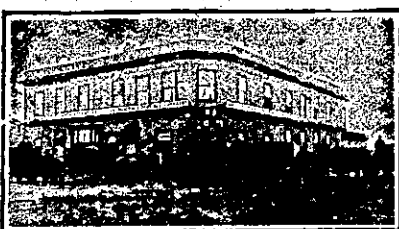


**TE AUTE HOTEL,**  
Half-way between WAIPAWA and HASTINGS.  
Best Wines and Spirits kept. Good table. Good Shooting and Fishing.  
T. BURGESS ..... Proprietor.

TEMUKA.

**CROWN HOTEL,**  
TEMUKA.  
The leading Tourist and Commercial House. Extensive additions have recently been made to this popular Hotel, which now possesses every modern comfort and convenience for tourists and travellers. The Crown Hotel is situated within a few minutes of the Temuka and Opihi rivers, which are noted trout streams. Every information supplied on application to the proprietor.  
CHAS. COOMBS.

THAMES.



**PACIFIC HOTEL**  
(Opposite Bank New Zealand).  
THAMES.  
Good Accommodation. Excellent Table. BEST BRANDS OF WINES, ALES AND SPIRITS. The proprietor guarantees what the label says the bottle contains.  
W. L. DENNERLY .... Proprietor.



**LADY BOWEN HOTEL,**  
THAMES.  
ONLY BEST BRANDS OF WINES, SPIRITS AND ALES STOCKED.  
FRED. W. ROBINSON, Proprietor.

**WHARF HOTEL,**  
THAMES.  
JACK ROBINSON ..... Proprietor.  
Two minutes from Railway Station. Five minutes from Wharf. Tariff: 6s per day.

**SALUTATION HOTEL,**  
MARY ST., THAMES.  
HARRY BROWNLEE, Proprietor.  
Only SPEIGHT'S ALE on Draught. Best Ale in Town.

**WARWICK ARMS HOTEL,**  
THAMES.  
MRS LA DETTE .... Proprietress.  
Best of Ales, Wines, and Spirits kept. Campbell and Ehrenfried Ale on draught. All Colonial Bottled Ales kept.

**GOVERNOR BOWEN HOTEL,**  
THAMES.  
(Close to Wharf and Railway Station.)  
FIRST-CLASS ACCOMMODATION. GOOD TABLE. ONLY THE BEST LIQUORS STOCKED.  
T. R. NIXON ..... Proprietor.  
(Late of Tauranga Hotel, Tauranga, and Carpenters' Arms Hotel, Auckland.)

TIMARU.



**SEA VIEW HOUSE**  
(Private), TIMARU.  
Four minutes from Post Office. Overlooking Caroline Bay. 35 rooms, including Billiard and Smoke Rooms. Hot and cold baths. Promenade roof with commanding view. Excellent Cuisine. Tariff Moderate. Phone 384.  
MRS. HYMAN ..... Proprietress.

**THE DOMINION HOTEL,**  
TIMARU.  
JOHN REILLY ..... Proprietor.  
The most modern and up-to-date Hotel in Timaru, overlooking Caroline Bay and the Harbour. Everything new inside and out. Absolutely fireproof. Electric light, and replete with every convenience. Bath-rooms, hot and cold water on every floor. Moderate tariff.

**CLUB HOTEL,**  
TIMARU.  
Close to Railway Station, and offering Excellent Accommodation to Travellers. Liberal Cuisine. Hot and Cold Baths. Best Brands of Liquors Stocked. Moderate Tariff.  
E. WARD ..... Proprietor.

**HIBERNIAN HOTEL,**  
TIMARU.  
Best of Wines and Spirits, and Real Good Beer.  
Comfortable Accommodation for travellers. Terms Moderate.

TURAKINA.

**RAILWAY HOTEL,**  
TURAKINA.  
Passengers by all trains have sufficient time to obtain refreshments at the above Hotel. Ales, Wines and Spirits, also Tea, Coffee, and Sandwiches, can be obtained. The only place where liquor can be procured by railway passengers between Palmerston and New Plymouth.  
THOS. HARVIE ..... Proprietor.

WAIKURAU.

**TAVISTOCK HOTEL,**  
WAIKURAU, HAWKE'S BAY.  
The above Hotel has just been rebuilt and refurbished throughout, and is now replete with every convenience. Waikurau is the noted health resort of the province. Good fishing and shooting. Excellent Accommodation for the Travelling Public.  
DONALD MCLEOD ..... Proprietor.  
(Late Whangarei and Feilding).

WAITARA.

**WAITARA HOTEL**  
WAITARA.  
THE RECOGNISED HOUSE FOR COMMERCIAL TRAVELLERS. FIRST-CLASS ACCOMMODATION FOR THE TRAVELLING PUBLIC, AT MODERATE TARIFF. HOT AND COLD PLUNGE AND SHOWER BATHS. NIGHT PORTER IN ATTENDANCE. Telephone, No. 7. P.O. Box 28. Letters and Telegrams promptly attended to.  
ALEX. KERR ..... Proprietor.

**MASONIC HOTEL,**  
WAITARA.  
J. C. HARRINGTON .... Proprietor.  
The leading house for Commercial and Tourists. First-class accommodation for the travelling public at a moderate tariff. BEST WINES AND SPIRITS ONLY KEPT IN STOCK.

WAIPAWA.

**COMMERCIAL HOTEL,**  
WAIPAWA.  
Private Suites of Apartments and every Convenience for the Accommodation of the Public. WINES, SPIRITS and BEER OF THE BEST QUALITY ONLY. A FIRST-CLASS BILLIARD TABLE. Stabling and Paddock Accommodation.  
W. PELLOW ..... Proprietor.



WHERE TO STAY IN WAIPAWA.  
**EMPIRE HOTEL.**  
The recognised House for Commercial Travellers. The most up-to-date Hotel in the District. Families and the general public can rely upon Excellent Accommodation. First-class sample rooms and stables attached to the Hotel.  
TARIFF: 8s. PER DAY.  
C. J. BARFORD ..... Proprietor.

**ISLINGTON PRIVATE HOTEL,**  
WAIPAWA.  
(Under entirely new Management.)  
The above House offers Excellent Accommodation to Travellers. Close to Railway Station. Tariff 6s per day.  
F. A. DRAGER ..... Proprietor.

**URENUI HOTEL,**  
The last Hotel approaching King Country from New Plymouth. Splendid motor drive from New Plymouth. Ideal week-end House. Good beach. Everything good.  
PHIL J. LANGLEY .... Proprietor.

**BURTON BREWERY CO., LIMITED,**  
PALMERSTON NORTH.  
ALES AND STOUT  
IN BULK OR BOTTLE.  
Brewed only from Choicest Hops and Malt.  
To be obtained at all the PRINCIPAL HOTELS IN THE WEL-LINGTON DISTRICT.

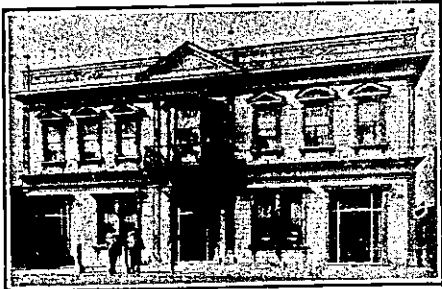
NEW ZEALAND HOTEL DIRECTORY.—(CONTINUED) — PATRONISED BY HORSEMEN, CYCLISTS, MOTORISTS, SPORTSMEN, COMMERCIAL TRAVELLERS, AND THE THEATRICAL PROFESSION.

WANGANUI.



**FOSTER'S HOTEL,**  
TAUPO QUAY, WANGANUI.  
Nearly opposite Town Bridge.  
Tel. No. 46. P.O. Box No. 54.

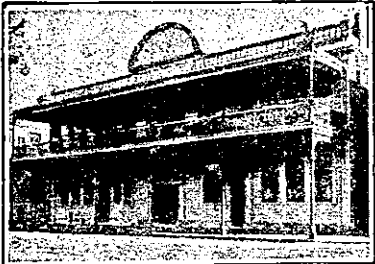
J. R. FOSTER ..... Proprietor.



**PROVINCIAL HOTEL,**  
WANGANUI.

FIRST-CLASS ACCOMMODATION FOR THE TRAVELLING PUBLIC. ONLY THE BEST OF ALES, WINES AND SPIRITS KEPT IN STOCK.

W. TUCK ..... Proprietor.

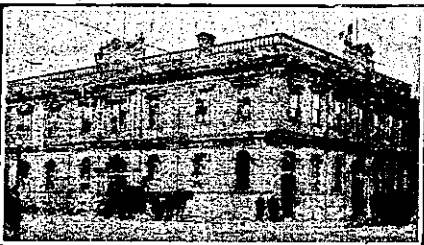


**MCCARTHY'S HOTEL,**  
WANGANUI.

IMMEDIATELY OPPOSITE RAILWAY STATION AND WHARVES.

G. J. MCCARTHY ..... Proprietor.

Telephone 147.



**METROPOLITAN HOTEL,**  
TAUPO QUAY, WANGANUI.

(One Minute from Post Office and Railway Station.) P.O. Box 138. Tel. 84. First-class accommodation. Excellent cuisine. TARIFF, 6s 6d Per Day.

T. H. NIXON ..... Proprietor.  
(Late of New Criterion Hotel, Wanganui)



**CHAVANNES' HOTEL,**  
WANGANUI.

THE COMFORTABLE, A HOMEY HOME FOR VISITORS TO WANGANUI.

Every Home Comfort. Excellent Cuisine. Commodious Sample Rooms.

J. G. SWAN ..... Proprietor.  
Phone 30. P.O. Box 21

**MASONIC HOTEL,**

(River Bank, below New Bridge) WANGANUI.

EVERYTHING OF THE BEST. A GOOD PLACE FOR A QUIET EVENING.

ALLAN MANGUSON ... Proprietor.

**PUTARURU HOTEL.**—This Hotel is situated half-way between Morrinsville and Rotorua, on the Rotorua line. It is adjoining the Railway Station, where all trains stop ten minutes. Good accommodation for the travelling public. Best wines and spirits. Motor car trips arranged. Saddle horses and buggies for hire.

W. F. BELL ..... Proprietor.

WELLINGTON.



PATRONISED BY ROYALTY.

**HOTEL CECIL,**  
WELLINGTON, N.Z.

Opposite Government Railway Station and Junction of City Tramways, and Adjoining Parliamentary Buildings.

EXCELLENT CUISINE AND EVERY MODERN CONVENIENCE.

P.O. Box 372. Telephone No. 354. Telegraphic Code: "Cecll."

TARIFF ON APPLICATION.

COOK'S COUPONS ACCEPTED.

MARGARET McPARLAND,  
Proprietress.

**The New Commercial Hotel**  
WELLINGTON.

Under entirely New Management.

The most luxurious and comfortable Hotel in the Dominion.

THREE MINUTES' from Wharf, Station, and all Government Offices and Business Houses. Electric Lift.

Day and Night Porters always in attendance.

COZY SMOKING ROOM, ELEGANTLY-APPOINTED DRAWING-ROOM AND WRITING-ROOM; ALSO SITTING-ROOMS ON EVERY FLOOR.

TARIFF—s/- per day; 4s/- per week.

NOTE.—Only the Best Wines and Spirits Stocked.

ALL LIQUORS AS FRESH AS THE LATEST NEWS.

M. H. ROBERTSON, Proprietor.



THE

**WELLINGTON HOTEL,**

Molesworth-street, WELLINGTON.

MR. CHRIS. JANSEN (late of Cambridge Terrace, Wellington) having taken over the above well known Hotel, wishes to inform his friends and the public that he is making every effort to cater for the comfort of patrons.

Country visitors will find this an ideal home.

Special attention is paid to the Wines and Spirits stocked.

**CLARENDON HOTEL,**

MANNERS-STREET, WELLINGTON.

J. O'MEARA ..... Proprietor.

Mr. O'Meara, late of Masterton and Feilding, desires to intimate to old friends and new that he has taken over the above popular house.

This centrally and conveniently situated Hotel offers the very Best Accommodation.

Best brands of Wines, Spirits, etc., kept in stock.

**TRAMWAY HOTEL,**

ADELAIDE ROAD, WELLINGTON.

MR FRANK McPARLAND

Begs to inform his friends and the public that he has taken over this well known Hotel. Visitors can rely on getting only the Best.

**Visitors & Tourists**

May rely upon having

Excellent

Accommodation

And finding

everything

First-class

at the

At  
**LOWER HUTT.**

Half-hour Drive from Trentham and Wellington.

Tariff, £2 2s per week.

ANDREW AVISON, Propr.



WELLINGTON.—Continued.

**THE EMPIRE HOTEL,**

(LIMITED).

THE LEADING & MOST CENTRAL HOTEL IN WELLINGTON.

**POST OFFICE HOTEL,**  
WELLINGTON.

Offers First-class Accommodation at a Moderate Tariff. Excellent Cuisine. Telegrams: Post Office Hotel, Wellington. Telephone 2327.

MRS M. McVINISH.

WESTPORT.

**EMPIRE HOTEL,**

WESTPORT.

P.O. Box No. 7. TELEPHONE No. 14.

The above well-known hostelry now offers first rate accommodation to the travelling public.

Spelght's Superior Brews always on Tap.

FAMILY AND COMMERCIAL HOUSE OF WESTPORT.

H. H. McMASTER ..... Proprietor.



**GRAND HOTEL,**

WESTPORT.

Under Vice-Regal Patronage, Their Excellencies Lords Ranfurly, Plunket and Islington.

R. TURNBULL ..... Proprietor.

Designs and Estimates Submitted. Architect's Details Artistically Treated.

**Auckland Fibrous Plaster Coy., Ltd.**

Architectural Modellers

All Kinds of Plaster and Cement Ornaments, of Latest Design at Lowest Rates. Fibrous Ceilings, Cornices, Centre Flowers, etc., a Specialty. Telephone No. 2850.

Wakefield St, Auckland.

Phone 4340.

**The Parisian Dry Cleaning & Pressing**

COMPANY.

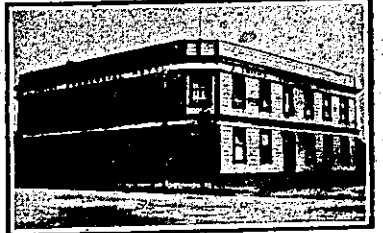
(Opposite Star Hotel).

Suit Cleaning Specialists.

Travellers', Professional People's orders executed within eight hours.

11 Great North Road, Auckland.

WAVERLEY.



**COMMERCIAL HOTEL,**  
WAVERLEY.

E. A. HART ..... Proprietor.

THE APPOINTED HOTEL FOR COMMERCIAL TRAVELLERS.

First-class Accommodation for the Travelling Public. Hot and Cold Shower Baths. TARIFF: 6s per day.

WHANGAREI.



**WHANGAREI HOTEL,**  
WHANGAREI.

This fine House, just re-built in brick and furnished in up-to-date style, now offers unrivalled Accommodation to the Travelling Public.

Sample Room. Hot and Cold Baths. Two minutes' walk from Saltwater Bathing Place.

Stabling Second to None.

Best Wines, Ales and Spirits kept in Stock.

SAMUEL McMAHON .... Proprietor.

**BRIDGE HOTEL,**

WHANGAHEHU.

GUS. McDONALD

Has pleasure in announcing he has taken over the above well-known Hotel, and will supply all Leading Brands of Beer and Spirits.

Extra paddocking accommodation is now provided for drovers.

WOODVILLE.

**MASONIC HOTEL,**

WOODVILLE.

Finest Commercial House in town. Hot and cold shower baths. Cuisine second to none.

Sample Rooms for the convenience of Commercial Travellers.

Telephone No. 33.

A. A. PENFOLD ..... Proprietor.

**Red House**

**Hotel,** OPUNAKE.

TOMMY KNOWLES, Proprietor.

Only the Best Brands of Wines, Ales, Spirits, etc kept in stock.

**WHANGAMOMONA HOTEL.**

EXCELLENT ACCOMMODATION FOR TRAVELLERS.

WINES AND SPIRITS THE BEST.

JAS. ROTHERY ..... Proprietor.

