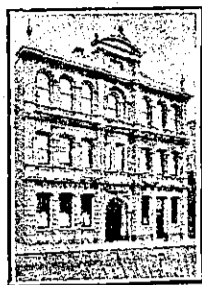


**NEW ZEALAND HOTEL DIRECTORY. — (CONTINUED). — PATRONISED BY HORSEMEN, CYCLISTS, MOTORISTS, SPORTSMEN, COMMERCIAL TRAVELLERS, AND THE THEATRICAL PROFESSION.**

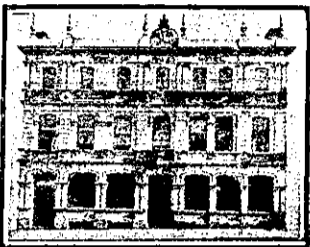
**DUNEDIN.—Continued.**

**GLADSTONE HOTEL,**

MACLAGGAN STREET, DUNEDIN.  
JOHN COLLINS ..... Proprietor.



The most centrally-situated Hotel in the City. First-class Accommodation for Tourists, Travellers and Boarders. Suites of rooms for Families. Charges moderate. A special feature: 1s. Lunch from 12 to 2 p.m. Hot Cold and Shower baths. The very best Wines, Ales, and Spirits supplied.



**PRINCE OF WALES HOTEL,**  
278 PRINCES STREET, DUNEDIN.  
Phone 721.

First-class Accommodation for the Travelling Public. Country Visitors will receive every attention. Terms moderate.

M. A. TUBMAN ..... Proprietor.

**CITY HOTEL,**

PRINCES STREET, DUNEDIN.

This splendid centrally situated Hotel is undoubtedly the best appointed house in Dunedin, and specially suited for Tourists and Commercials.

TARIFF FROM 8s PER DAY.

P.O. Box 212.

Letters and Telegrams Promptly Attended to.

WM. A. WOODS ..... Proprietor.

**GRIDIRON HOTEL,**

PRINCES ST., SOUTH DUNEDIN.

Just above the G.P.O. Trams stop opposite Hotel.

Good Accommodation for Visitors and Travellers. Terms moderate. The Gridiron is known for its excellent liquors.

SAMUEL W. GEDDES, Proprietor.

**ELTHAM.**

**ELTHAM HOTEL,**

(Directly opposite Railway Station.)

MRS M. CRAMP, Proprietress.

(Late of Gisborne).

Slow trains stop sufficient time to obtain refreshments. First-class Accommodation for the Travelling Public at a moderate Tariff.



**CORONATION HOTEL,**  
ELTHAM.

Excellent Accommodation for Tourists and Travellers. Wines and Spirits of the Best Brands only kept in stock.

C. POTTS ..... Proprietor.



**CENTRAL HOTEL,**  
ELTHAM.

GEO. W. TAYLER, ..... Proprietor.

First-class Accommodation for the Travelling Public. Only the Best Brands of Wines and Spirits kept.

**FEILDING.**



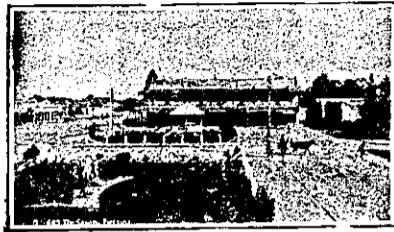
**EMPIRE HOTEL,**

FEILDING.

The above Hotel is opposite the Railway Station. First-class Accommodation for the Travelling Public.

TARIFF, 4s 6d PER DAY.

A. W. WHITEHOUSE .. Proprietor.



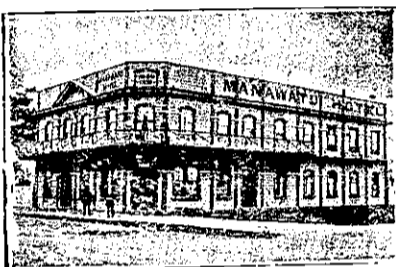
**HASTIE'S HOTEL,**

FEILDING.

UNDER ENTIRELY NEW MANAGEMENT. TARIFF MODERATE. REPLETE WITH EVERY CONVENIENCE. FIVE LARGE SAMPLE ROOMS.

THE MOST MODERN AND UP-TO-DATE HOTEL ON THE COAST. P.O. BOX 66. TELEPHONE 34. F. W. ELLIS ..... Proprietor.

**FOXTON.**



**MANAWATU HOTEL,**

FOXTON.

PERCY LUMSDEN ..... Proprietor.

This House has been the recognised rendezvous of the Theatrical Profession. Visitors will find every Comfort and Convenience at this well-known house. ONLY THE BEST BRANDS OF WINES, SPIRITS AND ALES STOCKED.

**GISBORNE.**

**BERT LUCAS**

(Next to Masonic Hotel),

GISBORNE.

Up-to-date Hairdressing Saloon. First-class Artists Employed. Best Brands Tobacco, Cigars, Pipes, Etc.

**MASONIC HOTEL,**

GISBORNE.

JOHN PETTIE ..... Proprietor.

First-class Accommodation for the Travelling public.

Cuisine second to none.

Only the Best Brands of Wines, Spirits and Ales, and all true to label.

**TURANGANUI HOTEL,**

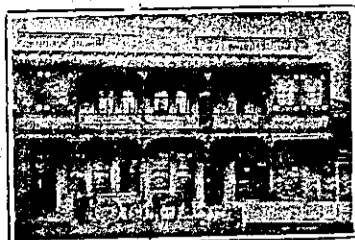
Close to Wharf, Railway and Post Office, GISBORNE.

RE-MODELLED AND RE-FURNISHED AND RENOVATED THROUGHOUT. Country Visitors and the Public will find this a most convenient Hotel, with Excellent Accommodation, Good Table, and Airy Rooms. TARIFF 6s PER DAY. Tel. 51

B. H. AISLABIE ..... Proprietor.

**GREYMOOUTH.**

**THE ALBION HOTEL, GREY-MOUTH.**



THE NEWEST AND MOST UP-TO-DATE HOTEL ON THE WEST COAST.

R. DUNPHY ..... Proprietor.

Tel. Address: Albion, Greymouth. Phone 48. Box 30.

**CLUB HOTEL**

(Under Entirely New Management), MAWHERA QUAY, GREYMOOUTH.

Right opposite steamer landing. Excellent Accommodation for the Travelling Public.

Only the Best Brands of Ales, Wines and Spirits kept. Hot and Cold Baths. Tariff, 6s. per day. MRS. J. L. DOOGAN .. Proprietress.

**SUBURBAN HOTEL,**

GREYMOOUTH.

(Semi-Private).

THE "SUBURBAN" IS THE NICEST HOUSE TO STAY IN AT GREY-MOUTH.

CLEAN, COMFORTABLE, REASONABLE AND NICELY ERRECTED.

"OUT OF THE BARBERS."

ONLY THE BEST OF EVERYTHING KEPT.

MAURICE FITZGERALD, Proprietor.

**THE EMPIRE HOTEL,**

GREYMOOUTH.

Centrally situated between Railway Station, G.P.O., Municipal Buildings, and Wharf. The Empire Hotel offers the travelling public the most Comfortable Accommodation and a Good Table at moderate rates. The Empire being a "free house," patrons can rely upon getting the very best brands of Wines and Spirits and Draught and Bottled Ales.

Proprietor .. JAMES S. VIAL.

**DUKE OF EDINBURGH HOTEL,**

GREYMOOUTH.

(Corner of Albert and Hospital streets) Under New Management.

ARTHUR BROOKS, formerly of Ahaura, has taken over the above well-known and popular hotel and will be pleased to see old and new faces. Excellent Accommodation. Only the best of Wines and Spirits.

ARTHUR BROOKS .... Proprietor.

**GREYTOWN NORTH.**



**CLUB HOTEL,**

GREYTOWN NORTH.

R. DOHRN ..... Proprietor. (Late Union Co.)

Visitors can rely upon getting every comfort. Wines and spirits only the best.

**GREYTOWN HOTEL,**

GREYTOWN NORTH.

Mr. Sven Polson, late of Morrison's Bush, wishes to notify his friends and the public that he has taken over the above well known House. Visitors can rely on getting every attention. Only the best Wines and Spirits in stock.

S. POLSON ..... Proprietor.

**WATSON'S HOTEL,**

GRANITY.

The above well-known House has been entirely re-built, and is now open to guests. Visitors to Granity will find a New Building, New Furniture and New Stocks of the very best Wines and spirits.

Under the management of MR. C. E. HALL, the house is to be run on up-to-date lines.

**HAMILTON.**

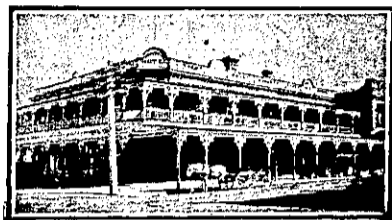


**ROYAL HOTEL,**

HAMILTON EAST.

Good Accommodation. Best Brands of Wines and Spirits. Good Stabling. Moderate Tariff.

H. C. BAKER ..... Proprietor. (Late of Whangarei).



**COMMERCIAL HOTEL,**

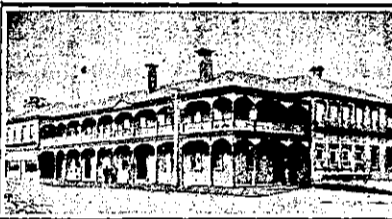
HAMILTON.

G. BODLEY ..... Proprietor.

The Travelling Public Specially Catered for.

TERMS MODERATE.

Telephone No. 12.



**HAMILTON HOTEL,**

HAMILTON.

J. B. HOOPER ..... Proprietor.

This Commodious and Up-to-date Hotel is replete with every modern convenience for the Comfort of Visitors. The Cuisine is first-class. Tariff Moderate.

ONLY THE BEST OF LIQUORS KEPT IN STOCK.

**HASTINGS.**

**HASTINGS HOTEL,**

(Directly Opposition Railway Station),

HASTINGS.

First-class accommodation for the Travelling Public. All the comforts of a Family and Commercial Hotel. First-class Sample Rooms. Tariff, 6s 6d per day. Permanents as per arrangement. Speight's Ale on tap. Letters and Telegrams promptly attended to.

Telephone 108. P.O. Box 191.

J. FLYNN ..... Proprietor.

**STORTFORD LODGE HOTEL,**

HASTINGS.

This House will make a speciality of stocking only the best Wines and Spirits. The Cuisine is under able management, and visitors and families will receive every attention. Eleven loose boxes, and paddocks. Tariff, 4s. 6d. per day.

E. A. GRENSIDE ..... Proprietor.

**THE PACIFIC HOTEL,**

HASTINGS.

ALF. ELLINGHAM ..... Proprietor.

FIRST-CLASS ACCOMMODATION FOR THE TRAVELLING PUBLIC.

EVERY COMFORT AND CONVENIENCE.

**RANGES. RANGES. RANGES.**

We are manufacturers of large Ranges, suitable for Boardinghouses, Hotels, Restaurants, Etc., with or without high-pressure boilers. We also stock all leading makes of Ranges, and Repair second-hand Ranges of all classes.

**STONEX AND WHITE,**

WAKEFIELD-STREET, AUCKLAND.

PLEASE NOTE THE  
**Walter Buchanan Cake Coy.**  
LTD.  
HIGH-CLASS CATERERS.  
Have only one address, viz.:  
**KARANGAHAPE ROAD.**  
Special Caterers for Weddings,  
Sporting Parties, Smoke  
Concerts and Socials.