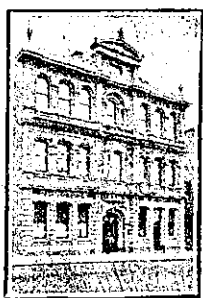


NEW ZEALAND HOTEL DIRECTORY.— (CONTINUED). — PATRONISED BY HORSEMEN, CYCLISTS, MOTORISTS, SPORTSMEN, COMMERCIAL TRAVELLERS, AND THE THEATRICAL PROFESSION.

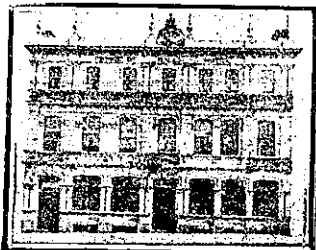
DUNEDIN.

GLADSTONE HOTEL,

MACLAGGAN STREET, DUNEDIN.
JOHN COLLINS Proprietor.



The most centrally-situated Hotel in the City. First-class Accommodation for Tourists, Travellers and Boarders. Suites of rooms for Families. Charges moderate. A special feature. A lunch from 12 to 2 p.m. Hot Cold and Shower baths. The very best Wines, Ales, and Spirits supplied.



PRINCE OF WALES HOTEL,
278 PRINCES STREET, DUNEDIN.
Phone 721.

First-class Accommodation for the Travelling Public. Country Visitors will receive every attention. Terms moderate.

M. A. TUBMAN Proprietor.

CITY HOTEL,

PRINCES STREET, DUNEDIN.

This splendid centrally situated Hotel is undoubtedly the best appointed house in Dunedin, and specially suited for Tourists and Commercials.

TARIFF FROM 8s PER DAY.

P.O. Box 212.

Letters and Telegrams Promptly Attended to.

WM. A. WOODS Proprietor.

GRIDIRON HOTEL,

PRINCES ST., SOUTH DUNEDIN.

Just above the G.P.O. Trams stop opposite Hotel.

Good Accommodation for Visitors and Travellers. Terms moderate. The Gridiron is known for its excellent liquors.

SAMUEL W. GEDDES, Proprietor.

ELTHAM.

ELTHAM HOTEL,

(Directly opposite Railway Station.)

MRS M. CRAMP, Proprietress.

(Late of Gisborne).

Slow trains stop sufficient time to obtain refreshments.

First-class Accommodation for the Travelling Public at a moderate Tariff.



CORONATION HOTEL,
ELTHAM.

Excellent Accommodation for Tourists and Travellers. Wines and Spirits of the Best Brands only kept in stock.

C. POTTS Proprietor.



CENTRAL HOTEL,
ELTHAM.

First-class Accommodation for the Travelling Public. Only the Best Brands of Wines and Spirits kept.

GEO. W. TAYLER, Proprietor.

FEILDING.



EMPIRE HOTEL,

FEILDING.

The above Hotel is opposite the Railway Station. First-class Accommodation for the Travelling Public.

TARIFF, 4s 6d PER DAY.

A. W. WHITEHOUSE .. Proprietor.



HASTIE'S HOTEL,

FEILDING.

UNDER ENTIRELY NEW MANAGEMENT. TARIFF MODERATE. REPLETE WITH EVERY CONVENIENCE. FIVE LARGE SAMPLE ROOMS.

THE MOST MODERN AND UP-TO-DATE HOTEL ON THE COAST.
P.O. BOX 66. TELEPHONE 24.

F. W. ELLIS Proprietor.

FOXTON.



POST OFFICE HOTEL,
FOXTON.

BEST OF WINES AND SPIRITS. ONLY SPEIGHT'S BEER. Coaches leave Hotel for Shannon and Levin twice daily. First-class Accommodation for Travellers.

W. F. GRAY Proprietor.



MANAWATU HOTEL,

FOXTON.

PERCY LUMSDEN Proprietor.

This House has been the recognised rendezvous of the Theatrical Profession. Visitors will find every Comfort and Convenience at this well-known house. ONLY the BEST BRANDS OF WINES, SPIRITS AND ALES STOCKED.

GISBORNE.

BERT LUCAS

(Next to Masonic Hotel),

GISBORNE.

Up-to-date Hairdressing Saloon. First-class Artists Employed. Best Brands Tobacco, Cigars, Pipes, Etc.

MASONIC HOTEL,

GISBORNE.

JOHN PETTIE Proprietor.

First-class Accommodation for the Travelling public.

Cuisine second to none.

Only the Best Brands of Wines, Spirits and Ales, and all true to label.

TURANGANUI HOTEL,

Close to Wharf, Railway and Post Office, GISBORNE.

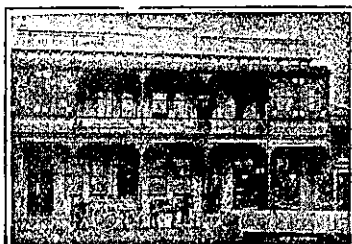
RE-MODELLED AND RE-FURNISHED AND RENOVATED THROUGHOUT. Country Visitors and the Public will find this a most convenient Hotel, with Excellent Accommodation, Good Table, and Airy Rooms.

TARIFF 6s PER DAY. Tel. 51

B. H. AISLABIE Proprietor.

GREYMOUTH.

THE ALBION HOTEL, GREYMOUTH.



THE NEWEST AND MOST UP-TO-DATE HOTEL ON THE WEST COAST.

R. DUNPHY Proprietor.

Tel. Address: Albion, Greymouth. Phone 4s. Box 30.

CLUB HOTEL

(Under Entirely New Management),

MAWHERA QUAY, GREYMOUTH.

Right opposite steamer landing. Excellent Accommodation for the Travelling Public.

Only the Best Brands of Ales, Wines and Spirits kept. Hot and Cold Baths. Tariff, 6s. per day.

MRS. J. L. DOOGAN .. Proprietress.

SUBURBAN HOTEL,

GREYMOUTH.

(Semi-Private).

THE "SUBURBAN" IS THE NICEST HOUSE TO STAY IN AT GREYMOUTH.

CLEAN, COMFORTABLE, REASONABLE AND NICELY ERRECTED.

"OUT OF THE BARBERS."

ONLY THE BEST OF EVERYTHING KEPT.

MAURICE FITZGERALD, Proprietor.

THE EMPIRE HOTEL,
GREYMOUTH.

Centrally situated between Railway Station, G.P.O., Municipal Buildings, and Wharf. The Empire Hotel offers the travelling public the most comfortable accommodation and a Good Table at moderate rates. The Empire being a "free house," patrons can rely upon getting the very best brands of Wines and Spirits and Draught and Bottled Ales.

Proprietor JAMES S. VIAL.

DUKE OF EDINBURGH HOTEL,
GREYMOUTH.

(Corner of Albert and Hospital streets) Under New Management.

ARTHUR BROOKS, formerly of Ahaura, has taken over the above well-known and popular hotel and will be pleased to see old and new faces.

Excellent Accommodation. Only the best of Wines and Spirits.

ARTHUR BROOKS Proprietor.

HAMILTON.



COMMERCIAL HOTEL,

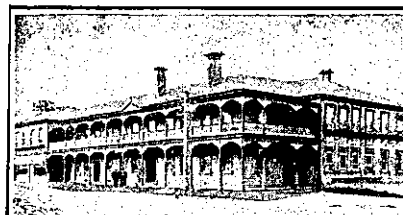
HAMILTON.

G. BODLEY Proprietor.

The Travelling Public Specially Catered for.

TERMS MODERATE.

Telephone No. 12.



HAMILTON HOTEL,

HAMILTON.

J. B. HOOPER Proprietor.

This Commodious and Up-to-date Hotel is replete with every modern convenience for the Comfort of Visitors. The Cuisine is first-class. Tariff Moderate.

ONLY THE BEST OF LIQUORS KEPT IN STOCK.

HAMILTON.—Continued.



ROYAL HOTEL,

HAMILTON EAST.

Good Accommodation. Best Brands of Wines and Spirits. Good Stabling. Moderate Tariff.

H. C. BAKER Proprietor. (Late of Whangarei).

HASTINGS.

HASTINGS HOTEL,

(Directly Opposition Railway Station), HASTINGS.

First-class accommodation for the Travelling Public. All the comforts of a Family and Commercial Hotel. First-class Sample Rooms. Tariff, 6s 6d per day. Permanent as per arrangement. Speight's Ale on tap. Letters and Telegrams promptly attended to.

Telephone 108. P.O. Box 191.

J. FLYNN Proprietor.

STORTFORD LODGE HOTEL,

HASTINGS.

This House will make a speciality of stocking only the best Wines and Spirits. The Cuisine is under able management, and visitors and families will receive every attention. Eleven loose boxes, and paddocks. Tariff, 4s. 6d. per day.

E. A. GRENSIDE Proprietor.

THE PACIFIC HOTEL,
HASTINGS.

ALF. ELLINGHAM Proprietor.

FIRST-CLASS ACCOMMODATION FOR THE TRAVELLING PUBLIC.

EVERY COMFORT AND CONVENIENCE.

HAWERA.



EGMONT HOTEL, HAWERA.

TERRY C. GORMLEY Proprietor.

This House has recently been refurbished and renovated throughout, and affords excellent accommodation for the travelling public.

HOKITIKA.



RAILWAY HOTEL,

HOKITIKA.

First House from Railway Station. Good accommodation for the travelling public at moderate rates. The Railway Hotel is the most convenient for travellers of all classes, being practically at the station gates. The accommodation is good, and every comfort of guests is studied. Everything of the best is served and guaranteed.

HENRY JONES Proprietor.

BATSON'S HOTEL (late Exchange), Revell St., HOKITIKA. Situated in the heart of the town, two minutes walk from the Railway Station, one minute from the Post Office. Most up-to-date in every particular. The proprietor recently disposed of the Glacier Hotel at the Waiho, South Westland, which, during Mr. Batson's occupancy, was known to be the best equipped country hotel in Westland. Unrivalled accommodation at Batson's. Terms 6s per diem. Boarders by arrangement. Tel. 88. P.O. Box 13.—W. H. BATSON, Proprietor.

WHANGAMOMONA HOTEL.

EXCELLENT ACCOMMODATION FOR TRAVELLERS.

WINES AND SPIRITS THE BEST.

JAS. ROTHERY Proprietor.