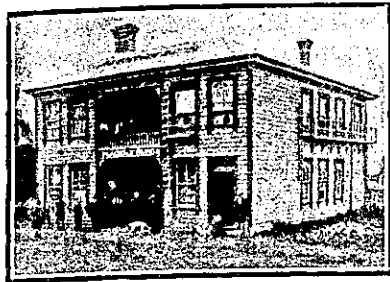


NEW ZEALAND HOTEL DIRECTORY -- (CONTINUED). -- PART OWNED BY ROSSMEN, CYCLISTS, MOTORISTS, SPORTSMEN, COMMERICAL TRAVELLERS AND THE THEATRICAL PROFESSION.

PAPAKURA.



PAPAKURA HOTEL, PAPAKURA.

Certificated house of the United Commercial Travellers' Association of New Zealand. Recently Renovated throughout. Splendid Accommodation and Cuisine. Large Rooms for use of Clubs. Saddle Horses and Buggies for hire to all parts of district.

W. PARKINSON ..... Proprietor.

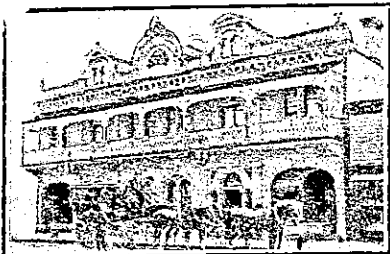
PATEA.

MASONIC HOTEL, PATEA.

The Hotel has been recently renovated and furnished throughout and offers first-class accommodation to travellers.

E. SMITH ..... Proprietor.

RANGIORA.



JUNCTION HOTEL, RANGIORA.

The Leading Hotel of the District. Splendid Accommodation for Travellers, Tourists and Families. Good Stabling. Best of Liquors.

B. EDWARDS ..... Proprietor.

REEFTON.



EXCHANGE HOTEL, And PRINCESS THEATRE (Leading Theatre), REEFTON.

TERMS MODERATE.

A. J. CHETTLE ..... Proprietor.

STEVENSON'S HOTEL, REEFTON.

(Under Vice-Regal Patronage).

Booking Office for Newman Bros. Westport and Nelson coaches, Cassidy and Co.'s Otira-Class coaches. Coach leaves Hotel daily for Westport. For Nelson, Tuesdays and Fridays. P.O. Box No. 15. Telephone No. 82.

W. A. STAPLETON, Proprietor.

ROSS.

CITY HOTEL (Late Pedrazzis), ROSS.

The first house from Railway Station. Splendid all-round accommodation at moderate tariff. Pedrazzis was always noted for its superior quality of liquors.

G. T. ADAMSON ..... Proprietor.

CENTRAL HOTEL, ROSS.

This new and centrally-situated Hotel, replete with every modern convenience, offers the best accommodation for the travelling public. Electric light throughout. New and handsome furniture. Telegrams and letters promptly answered.

A. H. CAULFIELD, Proprietor.

RUSSELL.

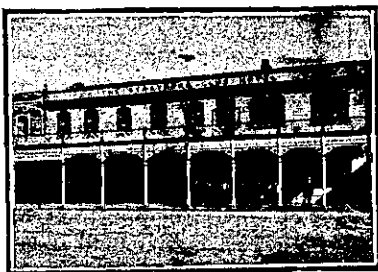
DUKE OF MARLBOROUGH HOTEL, RUSSELL, BAY OF ISLANDS.

(The first Licensed House in N.Z.)

First-class Accommodation. Attention and Civility, as well as a Good Table, guaranteed, with "some" Fish of the choicest almost every day. Give the House a call and see for yourselves. Boats for hire. Billiards, etc. Charges Reasonable. Nothing but the Best of Beers and Liquors kept in Stock.

DAVID FORSYTH ..... Proprietor.

STRATFORD.



CLUB HOTEL, STRATFORD.

C. DIAMOND (Late Albion Hotel, Patea). Desires to intimate to old friends and new that he has taken over the above popular hostelry. All liquors of the highest quality. Speight's Beer always on draught. First-class Accommodation for the Travelling Public. Tariff, 4s 6d per day.

SUMNER.

THE SUMNER HOTEL, SUMNER.

In the heart of the town, and a few yards from the Beach. Visitors to this seaside resort will find every modern comfort and convenience at this Hotel, which has been thoroughly renovated and brought up to date.

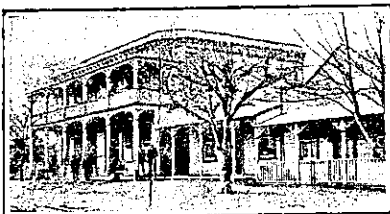
Best of Wines and Spirits. ALF. C. HULLETT ..... Proprietor.

TAIHAPE.

THE GRETNA HOTEL, TAIHAPE.

MRS F. H. GIBBONS .. Proprietress. This well-known Hostelry has all the Comforts of a Home and Conveniences of a First-class Hotel. The premises are furnished with a view to the comfort of the public. Tariff, 8s per day. Good Sample Room. Best Brands only. Passengers called for early trains.

TAUPO.



THE SPA AND LAKE HOTELS, TAUPO.

UNDER NEW MANAGEMENT.

A. G. GILLESPIE, of Rotorua, desires it known that he has taken over the above Hotels, and that for the future no effort will be spared by him to make both a home away from home. All the comforts of a home will be provided, and every attention given to patrons.

At the LAKE HOTEL, the Best of Wines, Spirits, Beers, etc., only will be dispensed.

The Spa and Lake Hotels are ideal Health Resorts, the bracing climate of Taupo being most invigorating.

TauPO FISHING is the Best in the Dominion. SHOOTING of the Best procurable during the Season. Hot Mineral Baths, equal to any procurable in Rotorua or New Zealand. The Crow's Nest Geyser is a sight not anywhere else to be witnessed.

SOUTH RAKAIA HOTEL, RAKAIA.

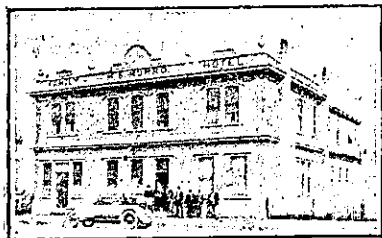
Good Accommodation for Visitors, Sportsmen and Tourists. Every attention and comfort. Best brands of Ales, Wines, and Spirits. Tariff moderate. Telegrams and letters promptly answered.

'Phone 17 P.O. Box 23. A. W. HILLS ..... Proprietor.

THE WAKEFIELD TEMPERANCE HOTEL, OPPOSITE TIMARU RAILWAY STATION.

Splendid accommodation for the travelling public.

Over 50 rooms, 40 single and double bedrooms. Large Dining Rooms with good table. Large Sitting Rooms, and Smoke Rooms. Very moderate terms.



FAMILY HOTEL, FOXTON.

MR H. S. MUNRO

(late of Palmerston North) announces that he has taken over the above hotel, where visitors can rely on

FIRST-CLASS ACCOMMODATION.

All Trains met on arrival.

Best Ales and Spirits only available.

TE AUTE.



TE AUTE HOTEL,

Half-way between WAIPAWA and HASTINGS.

Best Wines and Spirits kept. Good table. Good Shooting and Fishing.

T. BURGESS ..... Proprietor.

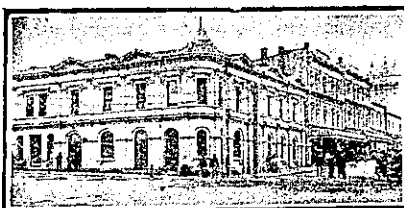
TE AWAMUTU.

TE AWAMUTU HOTEL, TE AWAMUTU.

JAMES JACKSON ..... Proprietor.

First-class Accommodation; Moderate Tariff. Only Best Brands Ales, Wines. A Free House. Dunedin Beer on Draught.

TIMARU.



THE EMPIRE HOTEL, TIMARU.

LEADING HOTEL IN SOUTH CANTERBURY.

DAVID LEECH ..... Proprietor. (Late Provincial, Port Chalmers, and Grand, Westport.)

MELVILLE HOTEL, TIMARU.

J. REILLY ..... Proprietor.

(Late of Wallingford Hotel, Temuka).

The Proprietor will be pleased to see Old and New Friends at the Melville. BEST WINES AND SPIRITS ONLY.

CLUB HOTEL, TIMARU.

Close to Railway Station, and offering Excellent Accommodation to Travellers. Liberal Cuisine. Hot and Cold Baths. Best Brands of Liquors Stocked. Moderate Tariff.

E. WARD ..... Proprietor.

THAMES.

EXCHANGE HOTEL,

POLLEN STREET, THAMES.

CHARLES HUGH BIRCH, Proprietor.

Tariff: 4s per day. Speight's and Lion Ales on draught.

WHARF HOTEL,

T H A M E S.

JACK ROBINSON ..... Proprietor.

Two minutes from Railway Station. Five minutes from Wharf. Tariff: 4s 6d per day.

SALUTATION HOTEL,

MARY ST., THAMES.

HARRY BROWNLEE, Proprietor.

Only SPEIGHT'S ALE on Draught. Best Ale in Town.

WARWICK ARMS HOTEL,

T H A M E S.

MRS LA DETTE .... Proprietress.

Best of Ales, Wines, and Spirits kept. Campbell and Ehrenfried Ale on draught. All Colonial Bottled Ales kept.

TIRAU.

OXFORD ROYAL HOTEL,

TIRAU.

FIRST-CLASS ACCOMMODATION FOR TRAVELLERS.

BEST WINES AND SPIRITS.

S. L. BYGRAVE ..... Proprietor.

TURAKINA.

RAILWAY HOTEL,

TURAKINA.

Passengers by all trains have sufficient time to obtain refreshments at the above Hotel. Ales, Wines and Spirits, also Tea, Coffee, and Sandwiches, can be obtained.

The only place where liquor can be procured by railway passengers between Palmerston and New Plymouth.

THOS. HARVIE ..... Proprietor.

WAIROA.

WAIROA HOTEL,

MARINE PARADE, WAIROA.

J. DICKSON ..... Proprietor. (Ten years at Masonic Hotel, Napier.)

The most comfortable and up-to-date Hotel in the Wairoa County. Best of Wines, Spirits, Malt Liquors kept in stock. Cuisine the best. Private Suites for Families. Sample rooms for Commercial Travellers.

WAITARA.

WAITARA HOTEL,

WAITARA.

THE RECOGNISED HOUSE FOR COMMERCIAL TRAVELLERS.

FIRST-CLASS ACCOMMODATION FOR THE TRAVELLING PUBLIC, AT MODERATE TARIFF.

HOT AND COLD PLUNGE AND SHOWER BATHS.

NIGHT PORTER IN ATTENDANCE.

Telephone, No. 7. P.O. Box 28.

Letters and Telegrams promptly attended to.

ALEX. KERR ..... Proprietor.

MASONIC HOTEL,

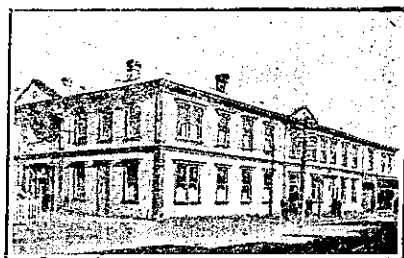
WAITARA.

J. C. HARRINGTON .... Proprietor.

The leading house for Commercials and Tourists. First-class accommodation for the travelling public at a moderate tariff.

BEST WINES AND SPIRITS ONLY KEPT IN STOCK.

WAIPAWA.



WHERE TO STAY IN WAIPAWA.

EMPIRE HOTEL,

The recognised House for Commercial Travellers. The most up-to-date Hotel in the District. Families and the general public can rely upon Excellent Accommodation. First-class sample rooms and stables attached to the Hotel.

TARIFF: 8s. PER DAY.

C. J. BARFORD ..... Proprietor.

WAITOTARA.

WAITOTARA HOTEL,

WAITOTARA.

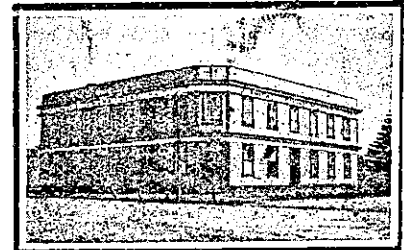
BRUERE BROS ..... Proprietors.

TARIFF, 4s 6d PER DAY.

FIRST-CLASS ACCOMMODATION.

Good Stabling. Horses and Traps on Hire.

WAVERLEY.



COMMERCIAL HOTEL,

WAVERLEY.

E. A. HART ..... Proprietor.

THE APPOINTED HOTEL FOR COMMERCIAL TRAVELLERS.

First-class Accommodation for the Travelling Public. Hot and Cold Shower Baths. TARIFF: 6s per day.

WAIUKU.

KENTISH HOTEL,

WAIUKU.

C. F. MOLLOY ..... Proprietor.

First-class Accommodation for the Travelling Public. Wines and Spirits of the best only stocked.

WANGANUI.

NEWMARKET HOTEL,

WANGANUI.

A most Homely House. First-class Accommodation and Splendid Cuisine. Every modern convenience. Well known as the Highland Home on the Rhine of New Zealand.

N. MACKENZIE FORBES, Proprietor