

LIVERY AND BAIT STABLES.

TATTERSALL'S NEW HORSE REPOSITORY.

26 BARKER STREET
(Off Cambridge Terrace).
WELLINGTON.

All Classes of Vehicles and Horses on hire. Wedding Carriages, Gigs, Etc. Carriages and expresses meet all trains and boats on order. Well appointed loose boxes for horses

J. JOHNSTON Proprietor.
Phone 670.

TATTERSALL'S LIVERY AND BAIT STABLES.

EGMONT STREET, NEW PLYMOUTH.

J. W. WEST Proprietor.

FOR HIRE — Wedding Carriages, Horses, Mourning Coaches, Open and Close Cabs, Hansoms, Brakes, Waggonettes, Single and Double Buggies (open or hooded). First-class Ladies' and Gents' Saddle Horses

Horses Bought, Sold, or Exchanged. Cabs meet all Trains. Orders and telegrams promptly attended to. Waiting Room for Ladies.
Telephone No. 62.

WESTPORT GRAND LIVERY STABLE, PALMERSTON ST.

Ask for ARTHUR CRADDOCK (Royal Mail Coaches, Westport to Charleston), who meets every train and steamer on arrival. Prompt attention and moderate charges. Splendid new livery and bait stables. Saddle horses and buggies on hire.

ROYAL MAIL COACHES TO MACRAE'S, &c. EMPIRE LIVERY STABLES, PALMERSTON.

Hacks and Vehicles of all descriptions always on Hire. Conveyances to meet Trains.
JAMES CHALLIS.
Telephone No. 4.

REEFTON LIVERY STABLES.

H. T. CRUMPTON, Proprietor.
Drags Meet all Trains. Saddle Horses, Gigs, Buggies, etc., on Hire. Contractor for Globe Mine and Progress Mail, the Coach leaving the Stable at 2 p.m. daily.
Telephone No. 4.

WILSON'S ROYAL MAIL STABLES, TAIHAPE.

VEHICLES OF EVERY DESCRIPTION ON HIRE.
MAIL CART MEETS EVERY TRAIN.
CLIPPING DONE AT REASONABLE RATES.
GOOD GARAGE FOR MOTOR CARS.

MANCHESTER STABLES, FEILDING.

Messrs. Richardson Bros., proprietors, assure the residents of this district that everything possible will be done to satisfy the requirements of the traveling public, and to earn the patronage of our clients. Horse-clipping. Cabs meet all trains. Orders and telegrams attended to. Telephone No. 83.
RICHARDSON BROS.,
THE SQUARE, FEILDING
(At back of Manchester Hotel).

RUTLAND LIVERY STABLES.

ST. HILL STREET, WANGANUI.
VEHICLES OF ALL DESCRIPTIONS FOR HIRE.
RUBBER TYRED LANDAUS AND GIGS A SPECIALITY.

Cabs meet all trains. Clippings done daily. Telephone 120.
WINDELBURN BROS. Proprietors.

WALKER'S STABLES, BULLS

ALL TRAINS MET.
MOTOR CARS ON HIRE.
SADDLERY MANUFACTURED AND REPAIRED.
FORWARDING AGENT.
SAMPLE ROOMS.

J. E. WALKER Proprietor.

DALGLIESH AND McDONALD, THE UP-TO-DATE LIVERY AND BAIT STABLES, HAMILTON.

Horses, Cabs and Buggies for Hire. Coaches meet all trains. Specials arranged for any part of the district.

Harold J. Crowther. [H. Alan Bell.
CAMBRIDGE HORSE BAZAAR.
LIVERY AND BAIT STABLES
HORSES BOUGHT, SOLD OR EXCHANGED.
COMMERCIAL TRAVELLERS SPECIALLY CATERED FOR.
CROWTHER AND BELL, Proprietors.

PULLAN, ARMITAGE & CO'S LIVERY STABLES,

Albert and Wellesley Streets.
BRAKES, BUSES, AND EVERY DESCRIPTION OF VEHICLE FOR HIRE.
Carriages for Wedding Parties a Speciality.
Horses Broken In, and Bought, Sold, and Exchanged.

MARTON HOTEL LIVERY AND BAIT STABLES.

Coaches meet all Trains. First-class Stabling Accommodation. Reliable Horses and Gigs on Hire. Clement-Talbot Motor Car at service of patrons. Terms on application. Telephone No. 78.

S. F. AMER Proprietor.

HOTELS.—Unclassified.

KAI-IWI HOTEL,

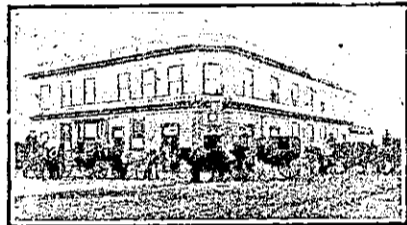
BEST BRANDS OF WINES AND SPIRITS ALWAYS ON HAND.
FIRST-CLASS TABLE.
MODERATE TARIFF.

W. R. GIBSON Proprietor.



LADY BOWEN HOTEL, THAMES.

ONLY BEST BRANDS OF WINES, SPIRITS AND ALES STOCKED.
FRED. W. ROBINSON, Proprietor.



PACIFIC HOTEL

(Opposite Bank New Zealand), THAMES.
Good Accommodation. Excellent Table.
BEST BRANDS OF WINES, ALES AND SPIRITS.
The proprietor guarantees what the label says the bottle contains.
W. L. DENNERLY Proprietor.

NO ARCHITECTS AND BUILDERS.—

We beg to draw attention to our "ACME" Reinforced Concrete Partition Block, which is hollow, light, sound-proof and fire-resisting, can be used on any wooden floor. Also Reinforced Concrete Gate Posts and Fencing Posts, House Blocks and Footings.
The above are cheap and easy to erect.

PRICES ON APPLICATION. CAN SUPPLY ON DEMAND.

Works, Freeman's Bay.

REINFORCED CONCRETE CONSTRUCTION AND ENGINEERING COMPANY.

LITTLE UNION STREET.

R. F. MOORE, Engineer.

Drink Peerless ALE

Made from Pure Malt and Hops. Naturally Matured. For Purity and Quality Unexcelled.
INVALID STOUT
A SPECIALITY

C. L. INNES & CO., Limited,

HAMILTON.
Brewers, Bottlers, and Aerated Water Manufacturers.
Branches—Hamilton and Waihi.
Aerated Waters—Taurarunui.

Fashionable Tailoring.

145 MANNERS ST., WELLINGTON.

Fashions in Clothes, as in Hats, are Continually Changing.

OUR TAILORING IS UP-TO-DATE. We can suit all tastes FOR HIGH-CLASS GENTLEMEN'S SUITS AND THE VERY LATEST IN LADIES' COSTUMES.

ROSSE BROS.,

LADIES' AND GENTLEMEN'S TAILORS.

145 MANNERS ST., WELLINGTON.

THE ELECTRIC CONSTRUCTION COMPANY OF N.Z.

HIGH STREET, AUCKLAND.

INSTALL—
ELECTRIC MOTORS,
ELECTRIC LIGHTS,
ELECTRIC LIGHT,
ELECTRIC FANS,
ELECTRIC HEATERS,
ELECTRIC BELLS.

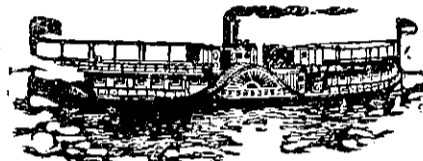
Office and Long Distance Telephones. We hold a complete stock of everything Electrical.

Correspondence Invited.

Telephone 2551.

Telegraphic Address, "Thawbun."

G. L. THORBURN, Manager.



THE DEVONPORT STEAM FERRY COMPANY (LIMITED).

STEAMERS—Eagle, Osprey, Britannia, Victoria, Takapuna, Birkenhead, Condor, Lyttelton, Albatross, Kestrel, Goshawk, Kawau and Ruru.

Steam Ferry Services to the Suburbs of DEVONPORT, NORTHCOTE, BIRKENHEAD and CHELSHA.

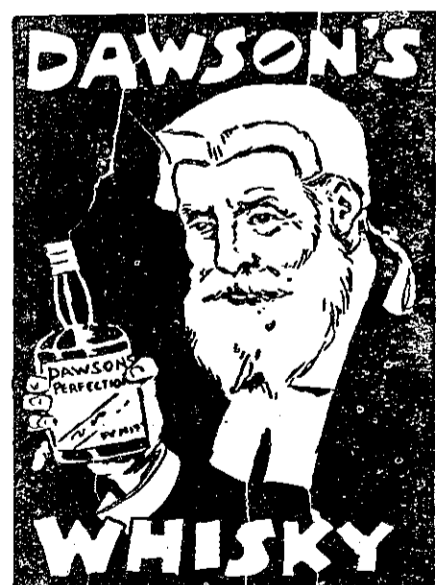
Steamers at short intervals daily from 6.30 a.m. to 11.40 p.m. Also all night service to Devonport.

Excursion Steamers run to the popular resorts—St. Helier's Bay, Lake Takapuna, and Pine Island—as notified in the daily papers.

Steamers on Hire for Excursions of any description and for extended trips. Comfortable Cabins, Every Convenience.
ALEX. ALISON, Manager.

NORTHERN STEAMSHIP CO., LTD.

TARANAKI SERVICE.
The s.s. RARAWA leaves Manukau every Sunday, Tuesday and Thursday, reaching New Plymouth in time for the express train to Wellington. The steamer leaves New Plymouth every Monday, Wednesday and Friday evenings at 8.30 p.m., on arrival of the through train.



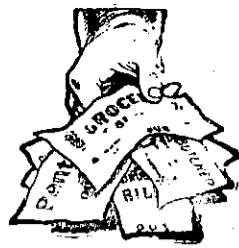
PEARSON & Co., Ltd., Sole Agents for Wellington district.

We Print

Ledger or Account Books
Memorandums
Invoices Cards
Prize Tickets for Shows
Concert Programmes
&c. &c.

Arthur Cleave & Co., LIMITED.

Vulcan Lane Auckland.



Who will meet these Bills when you're sick and disabled?

Our "Acme" Policy, costing Three Pence Halfpenny a day, covers 17 Different Illnesses. Gives 14 Different Benefits in case of Accidents, and an Annuity for Life of £15 in case of Total Disablement, in addition to Weekly Compensation.

New Zealand Insurance Co., LIMITED.

SID CLARKE. CHAPPIE CLARKE.

CLARKE BROS.

Successors to Davenport & Son,

House Furnishers, Importers and Manufacturers.

KARANGAHAPE ROAD, AUCKLAND.

(Opposite Newton Post Office).

We have just landed a large and varied range of linoleums and carpets in latest patterns and designs.

Phone 989.

At The Seaside



WOLFE'S SCHNAPPS

Will be found —
"A Drink to be grateful for."
HEALTHFUL,
INVIGORATING.

BARBER'S TEA ROOMS.

QUEEN STREET AND KARANGAHAPE ROAD, AUCKLAND.

Appetising Teas and Luncheons served in dainty home-like fashion. Menu excellent. Attendants courteous. Private Functions, Balls, Banquets, Picnics, Etc., catered for.

RAILWAY HOTEL, FORDELL.

J. COOPER Proprietor.

First-class Accommodation for the Travelling Public.
WINES AND SPIRITS OF THE BEST BRANDS ONLY STOCKED.

ROYAL HOTEL, HAWERA.

Best Brands of Wines and Spirits always on hand.
First-class Accommodation. Good Table. Billiard Room.

GEO. H. GIBSON Proprietor.