

NEW ZEALAND HOTEL DIRECTORY—(CONTINUED). — PATRONISED BY ROSSMEN, CYCLISTS, MOTORISTS, SPORTSMEN, COMMERICAL TRAVELLERS AND THE THEATRICAL PROFESSION.

DANNEVIRKE.

THIS SPACE IS RESERVED.

When Visiting
DANNEVIRKE,
Call at the

JUNCTION HOTEL,

BEST ALES, WINES AND SPIRITS KEPT.
MODERATE TARIFF.
CHAS. BADDELEY Proprietor.

MASONIC HOTEL,
DANNEVIRKE.

C. A. JENSEN Proprietor.
FIRST-CLASS ACCOMMODATION FOR THE TRAVELLING PUBLIC.
EVERY COMFORT AND CONVENIENCE.

THE CLUB HOTEL,
DANNEVIRKE.

H. BAKER Proprietor.
Opposite the Railway Station. All trains stop sufficient time for refreshments.
Wines and Spirits of best brands only stocked.

DARGAVILLE.



NORTHERN WAIROA HOTEL,
DARGAVILLE.

EVERY POSSIBLE CONVENIENCE FOR THE TRAVELLING PUBLIC.
The BILLIARD ROOM is fitted with one of Alcock's Best Tables.
Launches available for trips to the Wairoa Falls.
F. L. HODGES Proprietor.

THE CENTRAL HOTEL,
DARGAVILLE.

(Close to Wharf and Railway Station).
Is now under the Management of MR. S. THOMPSON.
And the Travelling Public will find it one of the most Convenient Houses in the District.

GOOD ACCOMMODATION.

Telegrams Promptly Attended to.
Telephone 34.

DUNEDIN.

GLADSTONE HOTEL,

MACLAGGAN STREET, DUNEDIN.
JOHN COLLINS Proprietor.

The most Centrally-situated Hotel in the City. First-class Accommodation for Tourists Travellers and Boarders. Suites of rooms for Families. Charges Moderate. A Special Feature: 1s Lunch from 12 to 2 o'clock. Hot, Cold and Shower Baths. The Very Best of Wines, Ales, and Spirits supplied.

ELTHAM.

ELTHAM HOTEL,

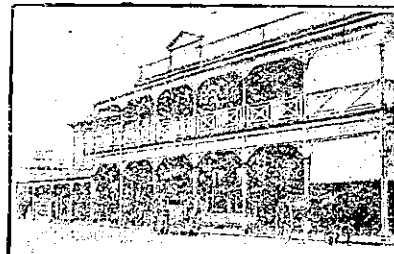
ELTHAM.
(Directly opposite Railway Station.)
MRS M. CRAMP, Proprietress.
(Late of Gisborne).
Slow trains stop sufficient time to obtain refreshments.
First-class Accommodation for the Travelling Public at a moderate Tariff.



CORONATION HOTEL,
ELTHAM.

Excellent Accommodation for Tourists and Travellers.
Wines and Spirits of the Best Brands only kept in stock.

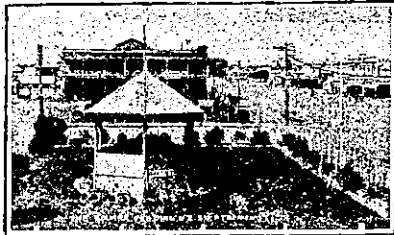
C. POTTS Proprietor.



CENTRAL HOTEL,
ELTHAM.

GEO. W. TAYLER, Proprietor.
First-class Accommodation for the Travelling Public.
Only the Best Brands of Wines and Spirits kept.

FEILDING.



MANCHESTER HOTEL,
FEILDING.

This centrally and conveniently situated Hotel offers the best Accommodation for the Travelling Public. Replete with every modern convenience. Best Brands of Ales, Wines, Spirits, etc., kept on Stock.

J. O'MEARA Proprietor.

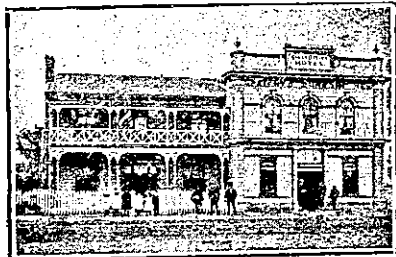


EMPIRE HOTEL,
FEILDING.

The above Hotel is opposite the Railway Station. First-class Accommodation for the Travelling Public.

TARIFF, 4s 6d PER DAY.
A. W. WHITEHOUSE .. Proprietor.

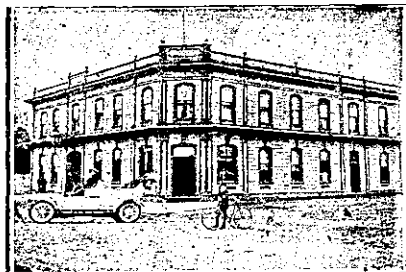
FOXTON.



POST OFFICE HOTEL,
FOXTON.

BEST OF WINES AND SPIRITS. ONLY SPEIGHT'S BEER.
Coaches leave Hotel for Shannon and Levin twice daily.
First-class Accommodation for Travellers.

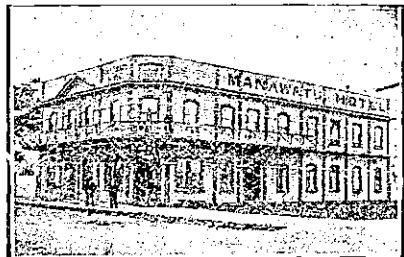
W. F. GRAY Proprietor.



WHYTE'S HOTEL,
FOXTON.

The recognised house for Commercial Travellers. This Hotel offers superior accommodation to Travellers, and is a first-class family house in every respect. Letters and telegrams promptly attended to. Only the best of Ales, Wines and Spirits stocked.

W. J. WHITE Proprietor.



MANAWATU HOTEL,

FOXTON. PERCY LUMSDEN Proprietor.

This House has been the recognised rendezvous of the Theatrical Profession. Visitors will find every Comfort and Convenience at this well-known house. ONLY THE BEST BRANDS OF WINES, SPIRITS AND ALES STOCKED.

GREYMOOUTH.



CLUB HOTEL,

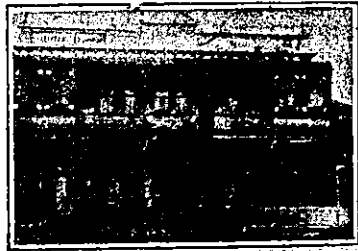
MAWHERA QUAY, GREYMOOUTH.

Right opposite steamer landing. Excellent Accommodation for the Travelling Public.
Only the Best Brands of Ales, Wines and Spirits kept. Hot and Cold Baths. Tariff, 5s per day.

ALEX. LENNIE Proprietor.

GREYMOOUTH—Continued.

THE ALBION HOTEL, GREYMOOUTH.



Tel. Address: Albion, Greymouth. Phone 49. Box 34.

THE NEWEST AND MOST UP-TO-DATE HOTEL ON THE WEST COAST.

R. DUNPHY Proprietor.



GILMER HOTEL,

GRESSION STREET, GREYMOOUTH (Opposite the Wharf).
CHAS. BURRELL Proprietor. (Late of Kaitangata).

The Gilmer Hotel is a newly-built, up-to-date Brick Hotel, with every modern convenience. Boarders can rely upon every attention, and the household duties are under the personal supervision of Mrs. Burrell. Speight's Beer on tap, and the wines are the best procurable. Good Table. Charges moderate. A Trial Solicited.

SUBURBAN HOTEL,
GREYMOOUTH.

(Semi-Private).

THE "SUBURBAN" IS THE NICEST HOUSE TO STAY IN AT GREYMOOUTH.

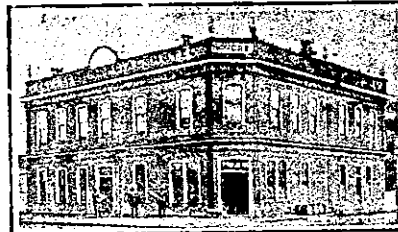
CLEAN, COMFORTABLE, REASONABLE AND NICELY ERECTED.

"OUT OF THE BARBERS."

ONLY THE BEST OF EVERYTHING KEPT.

MAURICE FITZGERALD, Proprietor.

GREYTOWN.



CLUB HOTEL,
GREYTOWN NORTH.

C. G. WHITE Proprietor.

Up-to-date Sample Rooms. Appointed by Commercial Travellers' Association. BEST WINES AND SPIRITS ONLY KEPT IN STOCK.

HAMILTON.

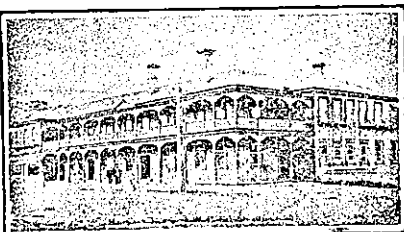


COMMERCIAL HOTEL,
HAMILTON.

Y. BODLEY Proprietor.

The Travelling Public Specially Catered for.

TERMS MODERATE.
Telephone No. 12.



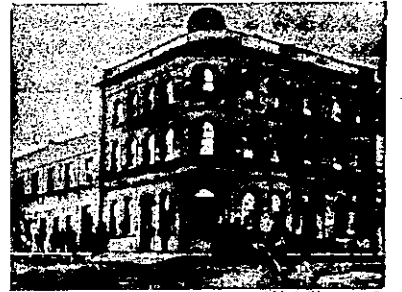
HAMILTON HOTEL,
HAMILTON.

J. B. HOOPER Proprietor.

This Commodious and Up-to-date Hotel is replete with every modern convenience for the Comfort of Visitors. The Cuisine is first-class. Tariff Moderate.

ONLY THE BEST OF LIQUORS KEPT IN STOCK.

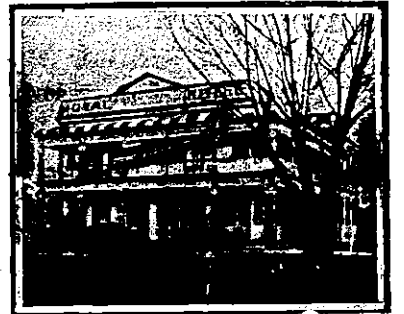
HAMILTON—Continued.



WAIKATO HOTEL,
HAMILTON EAST.

The Travelling Public will find every modern comfort and convenience at this well-known and popular Hotel. Tariff 6s 6d per day. Tel. No. 9.

GEORGE B. MAIN Proprietor.



ROYAL HOTEL,

HAMILTON EAST.

Good Accommodation. Best Brands of Wines and Spirits. Good Stabling. Moderate Tariff.

H. C. BAKER Proprietor. (Late of Whangarei).

HASTINGS.

HASTINGS HOTEL,

(Directly Opposition Railway Station), HASTINGS.

First-class accommodation for the Travelling Public. All the comforts of a Family and Commercial Hotel. First-class Sample Rooms. Tariff, 6s 6d per day. Permanents as per arrangement. Speight's Ale on tap. Letters and Telegrams promptly attended to.

Telephone 108. P.O. Box 191.
J. FLYNN Proprietor.

HAWERA.

CENTRAL HOTEL,

THE WELL-KOWN HOUSE IN HAWERA FOR TRAVELLERS AND TOURISTS.

EVERYTHING OF THE BEST.

B. HARRINGTON Proprietor.

HOKITIKA.



RAILWAY HOTEL,
HOKITIKA.

First House from Railway Station. Good accommodation for the travelling public at moderate rates. The Railway Hotel is the most convenient for travellers of all classes, being practically at the station gates. The accommodation is good, and every comfort of guests is studied. Everything of the best is served and guaranteed.

HENRY JONES Proprietor.

HUNTLY.

HUNTLY HOTEL,

HUNTLY. L. B. HARRIS Proprietor.

This Hotel is now one of the largest in the Waikato. All trains stop at Huntly, and the Hotel is a few yards from the Station. First-class Accommodation and Excellent Table.

INGLEWOOD.

INGLEWOOD HOTEL,
INGLEWOOD.

A. LAING Proprietor. (Late of Woodville.)

FIRST-CLASS ACCOMMODATION FOR THE TRAVELLING PUBLIC. WINES AND SPIRITS OF THE BEST BRANDS ONLY.