

general information bureau. The passenger sought information elsewhere, but he remarked that he would get even with the guard. That evening his opportunity came. The air was chilly as the train drew up at a country station in the "dry" area. "Guard," whispered the passenger, as the official passed his window, "would you like to take a nip?" The guard glanced furtively up and down the platform, and, seeing that the coast was clear, approached the carriage window. "I have no objection," he said, confidentially; "it's very kind of you, sir." "Right you are," said the passenger, producing his railway ticket. "Take it out of that!"

al intent, and so is breaking that interpretation of the sixth commandment which declares against self-murder. Rash persons who look on the cocoa when it is greasy, do you know that you are poisoning yourselves with theo-bromine? The worst wine-bibber never did anything more recklessly self-indulgent. Tea and coffee are active with equally noisome drugs.

Judge Backhouse recently refused to allow a controversy on the question of when a man is drunk. A witness said, in reply to the Crown Prosecutor "I was not drunk, but I had a few drinks." The judge interposed and said to the Crown Prosecutor: "Perhaps you had better not raise that difficult question, Mr Harris. In West Australia a week or so ago, I believe a whole day was occupied in arguing the point. One of the judges said that a man was not intoxicated when he was sober; but I don't think that shed much light on the subject."

**MOWBRAY & GORRIE,**  
Late J. M. AND J. MOWBRAY.  
(Established 1868.)  
HOTEL BROKERS AND VALUERS,  
SHAREBROKERS, LAND, MINING,  
AND FINANCIAL AGENTS,  
OFFICES, ONE DOOR ABOVE "STAR"  
OFFICE,  
22 SHORTLAND ST., AUCKLAND.

**H. A. JARDEN & CO.,**  
HOTELBROKERS, VALUATORS, LAND,  
ESTATE, INSURANCE AND FINANCIAL AGENTS,  
104 Hereford Street, CHRISTCHURCH.  
Sub-Agents: AUCKLAND, WELLINGTON AND DUNEDIN.

**HOTELS.**

- (1) CANTERBURY.—18 miles from Christchurch, lease 3 years, rent £3 6s, trade £40. Price £940 for lease and furniture; stock at valuation.
- (2) CHRISTCHURCH.—Lease 4 years, rent £13 per week, bar trade £100. Price, £1600; stock and furniture at valuation.
- (3) CANTERBURY.—20 miles from Christchurch, lease 3½ years, rent £5, trade £55. Price, £1050; stock and furniture at valuation.

**H. A. JARDEN AND CO.,**  
104 HEREFORD ST., CHRISTCHURCH.

**35/- WAIWERA 35/-**

6/- per Day or 35/- per Week.  
THE PICK OF SEASIDE RESORTS

MINERAL BATHS: Swimming 4s. per doz. Private 6s. per doz. CROQUET, TENNIS, BOWLING, FISHING.  
Steamer nearly every day. See Papers. Week end Trips 18s 6d, including boat and hotel. Tickets N.S.S. Co.  
BOATS AND BUGGIES FOR HIRE. Town prices.  
**B. B. CAVE, Manager**

**35/- WAIWERA 35/-**


THE NEW ZEALAND MOTOR AND CYCLE JOURNAL is the only paper published in the Dominion exclusively devoted to Motoring and Cycling pursuits. Published monthly. Price, Sixpence.—Arthur Cleave and Co., Ltd., Vulcan Lane, Auckland.

It is stated that the Weraroa Hotel, recently destroyed by fire, is to be rebuilt on a site at the Levin end of the town. Providing the consent of the Licensing Bench can be obtained to the transfer of site, the new building will be erected on a site in the vicinity of Durham street, which the hotel proprietors are understood to have purchased.

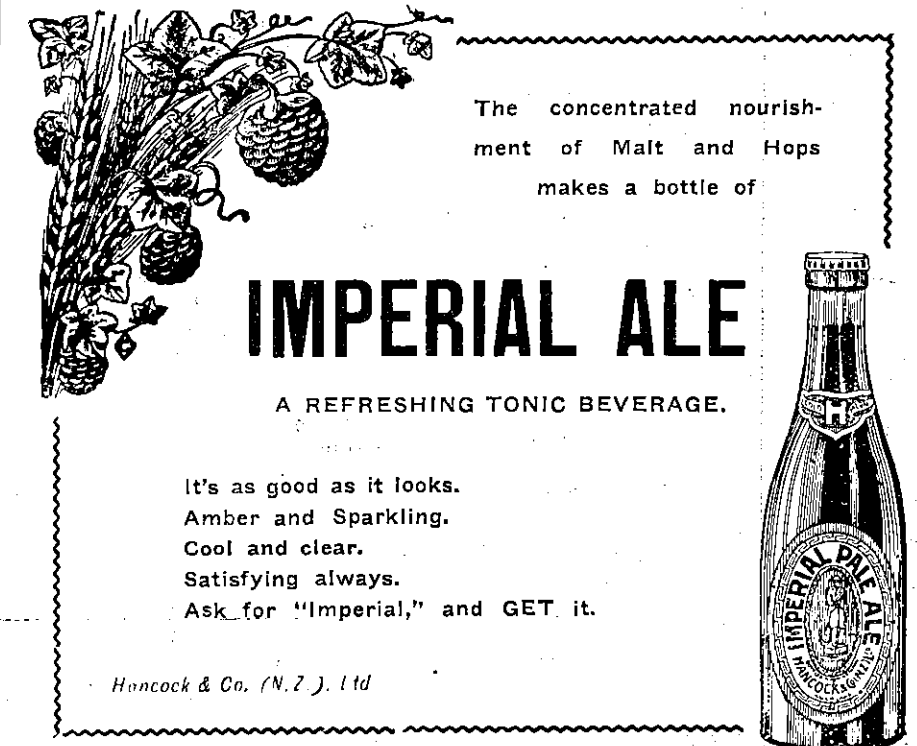
In Russia the sale of spirituous liquors is a Government monopoly. The estimated receipts from this source during the current year are £75,200,000, or more than a quarter of the total national revenue.

The drink bill for the year 1911 for the United Kingdom is estimated by Mr G. B. Wilson (secretary of the United Kingdom Alliance) at £162,797,229, an increase of £5,192,000 over that of 1910.

Medical men have at last spoken out as they should. They have assailed the national vices of tea, coffee, and cocoa; and they make every man shudder to think of the awful risks he has been running. Now the Methodist tea-meeting appears as a veritable orgy, plunging young men and young women into a vortex of tannin and vice. Whoever drinks cocoa is assaulting his own digestion with suicid-



**A DRINK TO BE GRATEFUL FOR**  
**WOLFE'S SCHNAPPS**  
A Medicine as well as a Beverage.



The concentrated nourishment of Malt and Hops makes a bottle of

**IMPERIAL ALE**

A REFRESHING TONIC BEVERAGE.

It's as good as it looks.  
Amber and Sparkling.  
Cool and clear.  
Satisfying always.  
Ask for "Imperial," and GET it.

Hancock & Co. (N.Z.) Ltd

**Hutchinson Bros. Ltd.**  
High-Class Grocers and Tea Specialists,  
Universal Providers, Auckland.

**4 STORES:**  
Queen St., Custom St. W., Ponsonby Road, Khyber Pass  
Wholesale Warehouse, Little Queen St.



**D.C.L.**  
**SCOTCH WHISKY**

"D.C.L." is known and appreciated everywhere for its purity, flavour, age, and digestive qualities.

One of the principal brands of  
**THE DISTILLERS COMPANY LTD.**  
Largest Scotch Whisky Distillers in the World. Capital employed over £3,000,000.  
EDINBURGH, SCOTLAND.

AGENTS—L. D. NATHAN & CO., LTD.,  
AUCKLAND.

**HOTELS.**

G. Mc Arthur [J. Baxter].  
**McARTHUR & CO.,**  
LAND, ESTATE AND GENERAL COMMISSION AGENTS AND HOTEL VALUERS,  
BRITISH BUILDINGS, QUEEN ST., AUCKLAND.

BAY OF ISLANDS—Commercial Hotel, excellent business; great prospects; doing over £100 weekly; good lease; low rent.  
HOTEL, North, freehold; rare chance good man; only house in large and prosperous district; takings, £85 weekly.  
HOTEL, Gisborne, free house, doing £70 weekly; small rental; lease about three years; one of the best.  
HOTEL, Taranaki, 30 rooms, five acres land; takings £90 weekly; reasonable rent; fair lease.  
ALSO HOTELS IN CITY AND SUBURBS, AND BUSINESSES OF ALL KINDS.

**ALBERT HOTEL,**  
QUEEN-STREET,  
AUCKLAND.

P. J. DELANY ..... Proprietor.

LIQUORS OF THE VERY BEST.

Phone 963.

**BATSON'S HOTEL** (late Exchange), Revell St., HOKITIKA. Situated in the heart of the town, two minutes walk from the Railway Station, one minute from the Post Office. Most up-to-date in every particular. The proprietor recently disposed of the Glacier Hotel at the Waiho, South Westland, which, during Mr. Batson's occupancy, was known to be the best equipped country hotel in Westland. Unrivalled accommodation at Batson's. Terms 6s per diem. Boarders by arrangement. Tel. 88. P.O. Box 13.—W. H. BATSON, Proprietor.

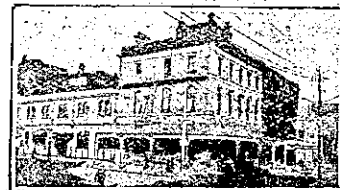


VERY OLD VATTED SCOTCH WHISKY  
Bulloch Lade & Co. Ltd Glasgow  
Distillers from pure malt only

**Bulloch Lade Whisky**

The Largest Pure Malt Whisky Distillers in the World.

All Leading Hotels



**MASONIC HOTEL, CHRISTCHURCH.**  
C. LANGE ..... Proprietor.  
(Late of Riccarton and White Swan Hotels.)  
Tariff: 6s per day.  
BEST QUALITY WINES AND SPIRITS.  
Phone 740.