

New Zealand Insurance Company Limited.

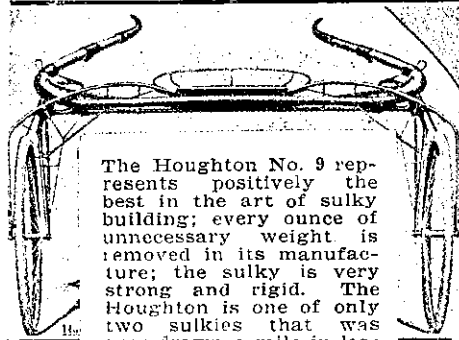
Fire, Marine, Accident.

(All Depts.)

H. P. KISSLING,
H. A. MARRINER,
Managers.

Auckland.

HOUGHTON PERFECTED NO. 9.

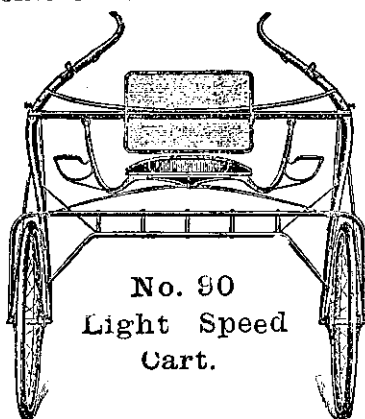


The Houghton No. 9 represents positively the best in the art of sulky building; every ounce of unnecessary weight is removed in its manufacture; the sulky is very strong and rigid. The Houghton is one of only two sulkies that was ever drawn a mile in less than two minutes. The Houghton is the most popular sulky on the American tracks. Furnished with aluminium-lined wood rims and detachable Dunlop tyres. Price £33 10s.

Trist & Small, SOLE AGENTS.
145 CASHEL STREET, CHRISTCHURCH

The McMURRAY.

JUST THE CART FOR THE AMATEUR; SUITABLE EITHER FOR RACING OR TRAINING.



This cart is frequently drawn by some of the fastest horses in New Zealand. It suits country tracks down to the ground, being very narrow, making it much easier to get through a field of horses.

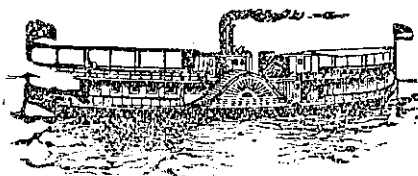
PRICE, £27 10s.

TRIGGS & DENTON,
59 Manchester Street, CHRISTCHURCH.

N.Z. LOAN AND MERCANTILE AGENCY CO., LTD.,
AUCKLAND.
Telephone No. 417.

TO RACING MEN, TRAINERS, AND OTHERS.
ELLERSLIE.

THE WELL-KNOWN TRAINING STABLES, owned by the late Mr. George Wright, situated on main road, Ellerslie; along with House and Level Section of Land, 165ft frontage to Panmure Road by 330ft frontage to Gladstone Road, being a corner section, which is growing more valuable every day. The front part could be cut into smaller sections, and ought to sell rapidly at a good increase above price asked for the whole place.



THE DEVONPORT STEAM FERRY COMPANY (LIMITED).

STEAMERS—Eagle, Osprey, Britannia, Victoria, Takapuna, Birkenhead, Condor, Lyttelton, Albatross, Kestrel, Goshawk, Kawau and Ruru.

Steam Ferry Services to the Suburbs of **DEVONPORT, NORTHCOTE, BIRKENHEAD AND CHELSEA.**

Steamers at short intervals daily from 6.30 a.m. to 11.40 p.m. Also all night service to Devonport.

Excursion Steamers run to the popular resorts—St. Heller's Bay, Lake Takapuna, and Pine Island—as notified in the daily papers.

Steamers on Hire for Excursions of any description and for extended trips. Comfortable Cabins, Every Convenience.
ALEX. ALISON, Manager.



NORTHERN STEAMSHIP CO., LTD.

TARANAKI SERVICE. The s.s. **RARAWA** leaves Manukau every Sunday, Tuesday and Thursday, reaching New Plymouth in time for the express train to Wellington. The steamer leaves New Plymouth every Monday, Wednesday and Friday evenings at 8.30 p.m., on arrival of the through train.

LIVERY AND BAIT STABLES.

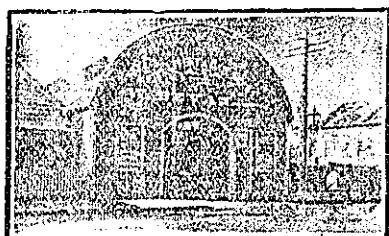
ROYAL MAIL COACHES.

H. MACKAY, Coach Proprietor, Martinborough. All Passenger Trains met at Featherston. Parcels forwarded to all parts of New Zealand. Saddle Horses and Vehicles always available.

EMPIRE LIVERY AND BAIT STABLES, FEATHERSTON.

B. STEVENS Proprietor.

Horses, also Gigs, Buggies, Brakes and Drags for Hire. Horses carefully broken. Carrying work undertaken.



THE EMPIRE LIVERY STABLES, Palmerston-street, Westport (opposite Empire Hotel). **WILLIAM BEVAN,** Proprietor. Agent for N.Z. Express Co., J. J. Curtis and Co., and the Keir Forwarding Co., Wellington. Goods carefully packed and forwarded to all parts of the world. Tourist trips to the Buller Gorge, Denniston Mines, Mokihini and Ngakawau, Granity and Cape Poulwind (the Isle of Wight of New Zealand).

PULLAN, ARMITAGE & CO.'S LIVERY STABLES,

Albert and Wellesley Streets. **BRAKES, BUSES AND EVERY DESCRIPTION OF VEHICLE FOR HIRE.** Carriages for Wedding Parties a Specialty. Horses Broken in, and Bought, Sold and Exchanged.

MASONIC STABLES, WAITARA.

I beg to notify the residents of Waitara and the travelling public that I have taken over the Masonic Stables, Waitara.

Gigs, buggies, cabs and drags always on hire, day or night. None but the best horses kept. Orders by post or wire carefully attended to. 'Phone 18.
E. A. PEPPERELL.

MCINDOE'S LIVERY STABLES And **MOTOR GARAGE,** MARTON.

SIGNALL BROS. Proprietors.

Reliable cars always on hire. Careful drivers. Charges moderate. Coaches meet all trains.

Special attention paid to Horses on Livery, Double and Single Buggies, Ladies' and Gents' Saddle Horses on Hire. Special Landau for Weddings. Letters and telegrams promptly attended to. Telephone No. 51.

MARTON HOTEL LIVERY AND BAIT STABLES.

Coaches meet all Trains. First-class Stabling Accommodation. Reliable Horses and Gigs on Hire. Clement-Talbot Motor Car at service of patrons. Terms on application. Telephone No. 78.

S. F. AMER Proprietor.

WILSON'S ROYAL MAIL STABLES, TAIHAPE.

VEHICLES OF EVERY DESCRIPTION ON HIRE.

MAIL CART MEETS EVERY TRAIN. CLIPPING DONE AT REASONABLE RATES.

GOOD GARAGE FOR MOTOR CARS.

MANCHESTER STABLES, FEILDING.

Messrs. Richardson Bros., proprietors, assure the residents of this district that everything possible will be done to satisfy the requirements of the travelling public, and to earn the patronage of our clients. Horse-clipping. Cabs meet all trains. Orders and telegrams attended to. Telephone No. 83.

RICHARDSON BROS., THE SQUARE, FEILDING (At back of Manchester Hotel).

RUTLAND LIVERY STABLES, ST. HILL STREET, WANGANUI.

VEHICLES OF ALL DESCRIPTIONS FOR HIRE.

RUBBER TYRED LANDAUS AND GIGS A SPECIALITY.

Cabs meet all trains. Clippings done daily. Telephone 120.

WINDELBURN BROS. Proprietors.

WALKER'S STABLES, BULLS.

ALL TRAINS MET. MOTOR CARS ON HIRE. SAUCLERY MANUFACTURED AND REPAIRED. FORWARDING AGENT. SAMPLE ROOMS.
J. E. WALKER Proprietor.

TATTERSALLS NEW HORSE REPOSITORY.

26 BARKER STREET (Off Cambridge Terrace). WELLINGTON.

All Classes of Vehicles and Horses on hire. Wedding Carriages, Gigs, Etc. Carriages and expresses meet all trains and boats on order. Well appointed loose boxes for horses

J. JOHNSTON Proprietor. 'Phone 670.

TATTERSALLS LIVERY AND BAIT STABLES.

EGMONT STREET, NEW PLYMOUTH

J. W. WEST - Proprietor.

FOR HIRE. — Wedding Carriages, Hearses, Mourning Coaches, Open and Close Cabs, Hansoms, Brakes, Waggonettes, Single and Double Buggies (open or hooded), First-class Ladies' and Gents' Saddle Horses.

Horses Bought, Sold, or Exchanged. Cabs meet all Trains. Orders and telegrams promptly attended to. Waiting Room for Ladies. Telephone No. 62.

'Phone 24.

DALGLIESH AND McDONALD, THE UP-TO-DATE LIVERY AND BAIT STABLES, HAMILTON.

Horses, Cabs and Buggies for Hire. Coaches meet all trains. Specials arranged for any part of the district.

Harold J. Crowther, [H. Alan Bell, CAMBRIDGE HORSE BAZAAR, LIVERY AND BAIT STABLES. HORSES BOUGHT, SOLD OR EXCHANGED.

COMMERCIAL TRAVELLERS SPECIALLY CATERED FOR.

CROWTHER AND BELL, Proprietors.

WESTPORT GRAND LIVERY STABLE, PALMERSTON ST.

Ask for **ARTHUR CRADDOCK** (Royal Mail Coaches, Westport to Charleston), who meets every train and steamer on arrival. Prompt attention and moderate charges. Splendid new livery and bait stables. Saddle horses and buggies on hire.

ROYAL MAIL COACHES TO MACRAE'S, &c.

EMPIRE LIVERY STABLES, PALMERSTON.

Hacks and Vehicles of all descriptions always on Hire. Conveyances to meet Trains.

JAMES CHALLIS, Telephone No. 4.

HOTELS.—Unclassified.

SHAMROCK HOTEL, WELLESLEY ST., AUCKLAND.

(One minute from Fuller's Opera House and Hayward's Pictures.)

Telephone 2147.

Secombe's Famous XXXX Lion Ale.

W. CANNER Proprietor.

TURANGANUI HOTEL, Close to Wharf, Railway and Post Office. GISBORNE.

RE-MODELLED AND RE-FURNISHED AND RENOVATED THROUGHOUT.

Country Visitors and the Public will find this a most convenient Hotel, with Excellent Accommodation, Good Table, and Airy Rooms.

A. F. SAUNDERS Proprietor. TARIFF 6s PER DAY. Tel. 51.

TO ARCHITECTS AND BUILDERS.—

We beg to draw attention to our "ACME" Reinforced Concrete Partition Block, which is hollow, light, sound-proof and fire-resisting, can be used on any wooden floor. Also Reinforced Concrete Gate Posts and Fencing Posts, House Blocks and Footings. The above are cheap and easy to erect.

PRICES ON APPLICATION. CAN SUPPLY ON DEMAND.

Works, Freeman's Bay.

REINFORCED CONCRETE CONSTRUCTION AND ENGINEERING COMPANY. LITTLE UNION STREET.

R. F. MOORE, Engineer.

CLARKE BROS.

Successors to Davenport & Son,

House Furnishers, Importers and Manufacturers.

KARANGAHAPE ROAD, AUCKLAND. (Opposite Newton Post Office).

We have just landed a large and varied range of linoleums and carpets in latest patterns and designs.

Phone 989.

BARBER'S TEA ROOMS, QUEEN STREET AND KARANGAHAPE ROAD, AUCKLAND.

Appetising Teas and Luncheons served in dainty home-like fashion. Menu excellent. Attendants courteous. Private Functions, Balls, Banquets, Picnics, Etc., catered for.

HARVEY & LANG, (Late Tyler and Harvey.) CUSTOM STREET WEST, AUCKLAND. Yacht, Launch and Boatbuilders and Designers.

All Launches and Yachts hauled up, cleaned, repaired and painted at shortest notice.

WM. GAMBLE, COOPER.

Particular work and repairs a specialty. Write for information on all branches of the trade.

LORNE STREET, AUCKLAND.

ALEX. B. RUGG & CO., CYCLE & PHONOGRAPH IMPORTER. 15 PITT STREET, AUCKLAND.

A large and varied stock of Edison's Phonographs and Records to choose from. B.S.A. Bicycles built to order. Cycle and phonograph repairs a specialty.

HOTELS.—Unclassified.

RAILWAY HOTEL, FORDELL.

J. COOPER Proprietor.

FIRST-CLASS ACCOMMODATION FOR THE TRAVELLING PUBLIC. WINES AND SPIRITS OF THE BEST BRANDS ONLY STOCKED.

CANTERBURY HOTEL, METHVEN.

HUGH KENNEDY Proprietor.

ROYAL HOTEL, TAWERA.

Best Brands of Wines and Spirits always on hand. First-class Accommodation. Good table. Billiard-room.

GEO. H. GIBSON Proprietor.

CHELTENHAM HOTEL, NEAR FEILDING.

Having taken over the above Hotel, I wish to notify the Residents of the District that I have stocked it with the best Liquors, Etc., and Customers can rely upon getting the brand they ask for.

F. W. ELLIS Proprietor.