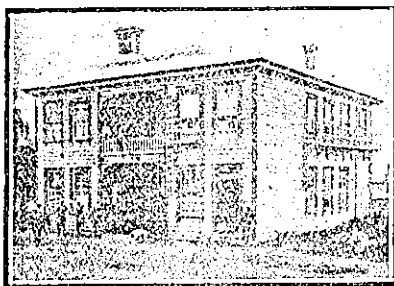


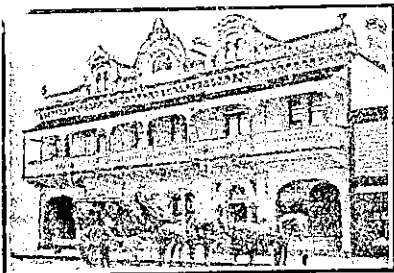
NEW ZEALAND HOTEL DIRECTORY—(CONTINUED). — FURNISHED BY HOBBSEYM, CYCLISTS, VICTORISTS, SPORTSMEN, COMMERCIAL TRAVELLERS AND THE THEATRICAL PROFESSION.

PAPAKURA.



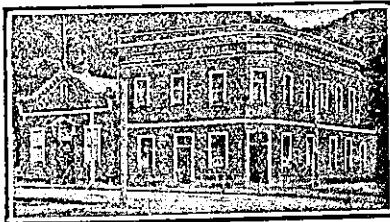
PAPAKURA HOTEL, PAPAKURA. Certificated house of the United Commercial Travellers' Association of New Zealand. Recently Renovated throughout. Splendid Accommodation and Cuisine. Large Rooms for use of Clubs. Saddle Horses and Buggies for hire to all parts of district. W. PARKINSON Proprietor.

RANGIORA.



JUNCTION HOTEL, RANGIORA. B. EDWARDS Proprietor. The Leading Hotel of the District. Splendid Accommodation for Travellers, Tourists and Families. Good Stabling. Best of Liquors.

REEFTON.



EXCHANGE HOTEL AND PRINCES THEATRE (Leading Theatre), REEFTON.

TERMS MODERATE.

A. J. CHETTLE Proprietor.

RIVERTON.



GREAT WESTERN HOTEL, RIVERTON. J. CRAWFORD Proprietor.

The recognised house for Commercial, Visitors and Tourists. Every home comfort. First-class Cuisine. Wines, Spirits and Ales of the choicest. Within two minutes' walk of the Railway Station and Post Office. The famous Aparima and Pourakina Rivers are close by, which provide the visitor with the combined pleasure of Fishing and Boating. Splendid Shooting in the vicinity. Motor launches on hire. Reasonable Tariff. Telegraphic address. Gt. Western. Riverton.

FRANKTON JUNCTION HOTEL, FRANKTON JUNCTION.

CLOSE TO RAILWAY STATION.

GOOD ACCOMMODATION FOR TRAVELLERS.

FIRST-CLASS TABLE.

BEST BRANDS OF WINES AND SPIRITS.

PORTER MEETS NIGHT EXPRESS OVER MAIN TRUNK.

MRS. E. F. MORIARTY, (Late of Paeroa), PROPRIETRESS.

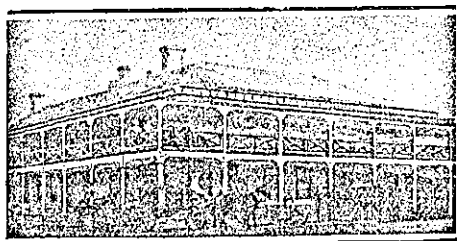
'THE NEW ZEALAND MOTOR AND CYCLE JOURNAL' is the only paper published in the Dominion exclusively devoted to Motoring and Cycling pursuits. Published monthly. Price, Sixpence.—Arthur Cleave and Co., Ltd., Vulcan Lane, Auckland.

RUSSELL.

DUKE OF MARLBOROUGH HOTEL, RUSSELL, BAY OF ISLANDS. (The First Licensed House in New Zealand.)

First-class Accommodation. Attention and Civility, as well as a Good Table, guaranteed with "some" Fish of the choicest almost every day. Give the house a call and see for yourself. Boats for Hire. Billiards, etc. Charges moderate. Nothing but the Best of Beers and Liquors kept in Stock. DAVID FORSYTH Proprietor.

STRAITFORD.



THE STRATFORD HOTEL, STRATFORD.

F. RHODES Proprietor. The Best-appointed Hotel in the District. Five Commodious Sample Rooms. Wines and Spirits only best procurable. Speight's XXX Dunedin Beer always on draught. Telegrams promptly attended to. Competent Chef in charge of Cuisine. Telephone No. 31. P.O. Box No. 31.



CLUB HOTEL, STRATFORD.

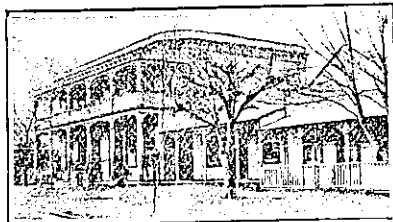
C. DIAMOND (Late Albion Hotel, Patea). Desires to intimate to old friends and new that he has taken over the above popular hostelry. All liquors of the highest quality. Speight's Beer always on draught. First-class Accommodation for the Travelling Public. Tariff, 4s 6d per day.

TAIHAPE.

THE GRETNA HOTEL, TAIHAPE.

MRS. F. H. GIBBONS Proprietress. This well-known Hostelry has all the comforts of a Home and conveniences of a first-class Hotel. The premises are furnished with a view to the comfort of the public. Tariff, 8s per day. Good Sample Room. Best Brands only. Passengers called for early trains.

TAUPO.



THE SPA AND LAKE HOTELS, TAUPO.

UNDER NEW MANAGEMENT.

A. G. GILLESPIE, of Rotorua, desires it known that he has taken over the above Hotels, and that for the future no effort will be spared by him to make both a home away from home. All the comforts of a home will be provided, and every attention given to patrons.

At the LAKE HOTEL, the Best of Wines, Spirits, Beers, etc., only will be dispensed.

The Spa and Lake Hotels are ideal Health Resorts, the bracing climate of Taupo being most invigorating.

TauPO FISHING is the Best in the Dominion. SHOOTING of the Best procurable during the Season. Hot Mineral Baths, equal to any procurable in Rotorua or New Zealand. The Crow's Nest Geyser is a sight not anywhere else to be witnessed.

We Print

- Ledger or Account Books
Memorandums
Invoices Cards
Prize Tickets for Shows
Concert Programmes
&c. &c.

Arthur Cleave & Co., LIMITED.

Vulcan Lane Auckland.

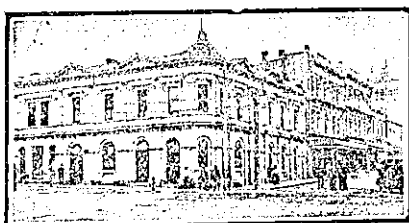
TE AWAMUTU.

THE AWAMUTU HOTEL, TE AWAMUTU.

JAMES JACKSON Proprietor.

First-class Accommodation. Moderate Tariff. Only Best Brands Ales, Wines, A Free House. Dunedin Beer on Draught.

TIMARU.



THE EMPIRE HOTEL, TIMARU.

LEADING HOTEL IN SOUTH CANTERBURY.

DAVID LEECH Proprietor. (Late Provincial, Port Chalmers, and Grand, Westport.)

MELVILLE HOTEL, TIMARU.

J. REILLY Proprietor.

(Late of Wallingford Hotel, Temuka.)

The Proprietor will be pleased to see Old and New Friends at the Melville. BEST WINES AND SPIRITS ONLY.

CLUB HOTEL, TIMARU.

Close to Railway Station, and offering Excellent Accommodation to Travellers. Liberal Cuisine. Hot and Cold Baths. Best Brands of Liquors Stocked. Moderate Tariff.

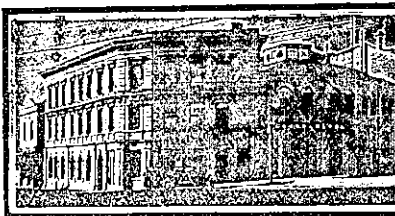
E. WARD Proprietor.



THE ROYAL HOTEL, TIMARU.

FIRST-CLASS ACCOMMODATION. Timaru and Speight's Ales Always on Tap.

WM. QUIRK Proprietor.



THE CROWN HOTEL, TIMARU.

First-class House. All Renovated throughout this year. First-class accommodation. Hole and Co. and Speight's Ales always on tap. Terms Reasonable. W. CONNELLY Proprietor.

TIRAU.

OXFORD ROYAL HOTEL, TIRAU.

FIRST-CLASS ACCOMMODATION FOR TRAVELLERS. BEST WINES AND SPIRITS.

S. L. BYGRAVE Proprietor.

TURAKINA.

RAILWAY HOTEL, TURAKINA.

Passengers by all trains have sufficient time to obtain refreshments at the above Hotel. Ales, Wines and Spirits, also Tea, Coffee, and Sandwiches, can be obtained.

The only place where liquor can be procured by railway passengers between Palmerston and New Plymouth.

THOS. HARVIE Proprietor.

STAR HOTEL, ALDINGTON.

ANNIE McINTYRE Proprietress. Splendid accommodation for Travelling Public. The comfort of guests studied. CRAMS STOP AT DOOR OF HOTEL. Close to the A. and P. Grounds, N.Z. Trotting Course, and Addition Saleyards. TARIFF MODERATE. Ring up TELEPHONE 2777 on arrival.

THE COMMERCIAL HOTEL, ASHBURTON.

A stone's throw from the station.

R. MEECHAM Proprietor.

The most comfortable House in Ashburton. Excellent Cuisine. Commodious Sample Rooms. Moderate Charges. Lessee of Oddfellows' Hall, Ashburton.

WAIROA.

WAIROA HOTEL, MARINE PARADE, WAIROA.

J. DICKSON Proprietor. (Ten years at Masonic Hotel, Napier.)

The most comfortable and up-to-date Hotel in the Wairoa County. Best of Wines, Spirits, Malt Liquors kept in stock. Cuisine the best. Private Suites for Families. Sample rooms for Commercial Travellers.

WAITARA.

WAITARA HOTEL, WAITARA.

THE RECOGNISED HOUSE FOR COMMERCIAL TRAVELLERS.

FIRST-CLASS ACCOMMODATION FOR THE TRAVELLING PUBLIC, AT MODERATE TARIFF. HOT AND COLD PLUNGE AND SHOWER BATHS.

NIGHT PORTER IN ATTENDANCE. Telephone, No. 7. P.O. Box 22.

Letters and Telegrams promptly attended to.

ALEX. KERR Proprietor.

MASONIC HOTEL, WAITARA.

MRS. M. CUSACK Proprietress. The leading house for Commercial and Tourists. First-class accommodation for the travelling public at a moderate tariff. BEST WINES AND SPIRITS ONLY KEPT IN STOCK.

WAIPAWA.

IMPERIAL HOTEL, (Opposite Railway Station), WAIPAWA.

A perfect home for Commercial and Travelling Public. Tariff moderate. Best bands of wines and spirits. Speight's Ale on Draught. All trains stop sufficient time for refreshments.

C. J. BARFORD (Late of Palmerston North).

WAITOTARA.

WAITOTARA HOTEL, WAITOTARA.

BRUERE BROS. Proprietors.

TARIFF, 4s. 6d. PER DAY.

FIRST-CLASS ACCOMMODATION. Good Stabling. Horses and Traps on Hire.

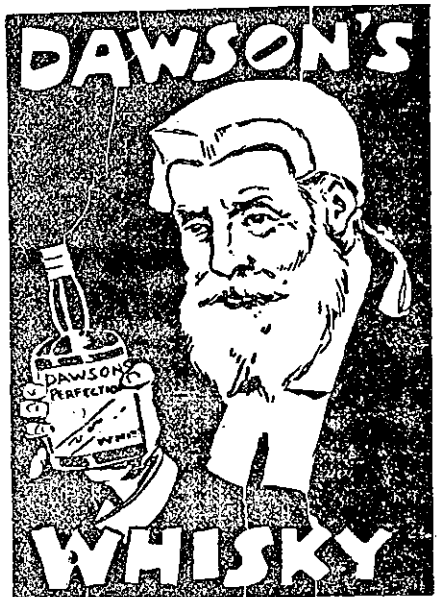
WHANGAEHU.

BRIDGE HOTEL, WHANGAEHU. (Under New Management.)

GUS. McDONALD

Has pleasure in announcing he has taken over the above well-known Hotel, and will supply all Leading Brands of Beer and Spirits.

Extra paddocking accommodation is now provided for drovers.



PEARSON & Co., Ltd., Sole Agents for Wellington district.

Drink Peerless ALE

Made from Pure Malt and Hops. Naturally Matured For Purity and Quality Unexcelled.

INVALID STOUT A SPECIALITY

C. L. INNES & CO., Limited, HAMILTON.

Brewers, Bottlers, and Aerated Water Manufacturers. Branches—Hamilton and Waikato. Aerated Waters—Taumarunui.