



TO STAND THE SEASON.

GLENORA PARK STUD.

SEASON 1911.

The following STALLIONS will be at the service of Breeders this season at GLENORA PARK:—

MARBLE ARCH, I. (IMP.).

Bay horse, by ISINGLASS (3), dam MALL, by LADAS (1), by HAMPTON, by LORD CLIFDEN, Serpentine, the dam of Mall, by St. Serf, by St. Simon.

MARBLE ARCH is a rich bay, 5 years old, stands 16 hands, is very bloodlike, and in colour and character like his sire, Isinglass, who ran 12 times and won 11 races, valued at £57,185, the LARGEST SUM WON BY A SINGLE HORSE IN THE ANNALS OF THE TURF.

Mall, dam of Marble Arch, was got by Ladas (winner of 2000 Guineas, Derby, Middle Park Plate, Newmarket Stakes, etc.), from Serpentine, by the St. Simon horse St. Serf, from Footlight (grand-dam of Flair, 1000 Guineas, and half sister to Illuminata, dam of Ladas, Gas, Chelndry), by Cremorne (Derby, Ascot, and Goodwin Cup), from Paraffin (three-quarter sister to Lord Lyon, 2000 Guineas, St. Leger, and to Chevilsaunce, dam of Janette (Oaks and St. Leger), by Blair Athol (Derby and St. Leger), from Paradigm (half-sister to Rouge Rose, dam of Bend Or (Derby, and sire of Ormonde, 2000 Guineas, Derby and St. Leger).

In MARBLE ARCH'S pedigree there are no less than six Derby, five 2000 Guineas, and eight St. Leger winners, besides winners of the Jockey Club Stakes, 10,000sovs; Princess of Wales' Stakes, 10,000sovs; and the principal big races in England.

MARBLE ARCH, having the strain of St. Simon blood, should further enhance his value as a sire, especially to nick with Soult mares.

Terms: 20 guineas Single Mare. Reduction of two or more, property of same owner.

GLUTEN (IMP.).

DARK CHESTNUT, by THURIO-BRAN BREAD, by SEE SAW.

Terms: Ten Guineas, Single Mare. Reduction for Two Mares the property of one owner.

GLUTEN is regarded as one of the most promising stallions imported to Australasia, and his yearlings sold in March, 1906 and 1907, at Melbourne, were highly thought of, one of the number realising top price.

GLUTEN was a fine performer on the turf, amongst his wins being the Lingfield Welter Plate (11.0), Birmingham Autumn Handicap, Gatwick Oval Handicap (two miles), and Goodwood Stakes (2½ miles). In India, he won the Bangalore Cup (1½ miles) carrying 9.4.

GLUTEN'S STOCK SHOW GREAT PROMISE.

Amongst some of his stock racing successfully in Australia, are Glucose, who won, besides other races, the Gang Forward Stakes in Adelaide, and Filament, who won the Adelaide Stakes, seven furlongs, 300sovs; and Glue, winner of the Sandhurst Cup (1½ miles), and Alderman Cup (1½ miles, 3min 2¼sec), besides a number of other winners.

In Auckland this season Gloy and Goldsize have each proved good winners.

COACHING STALLION.

MERRY PRINCE, 5yrs old, by Merry Boy dam Queenie, by Muskapeer, out of Norah. This is a fine-looking young horse, and Merry Boy's stock have proved themselves as first-class hacks and harness horses in the Waikato. Terms: Three Guineas.

First-class Grazing at 2s 6d per week. Every care taken but no responsibility.

For further particulars, apply to W. WALTERS, Glenora Park, Papakura, Auckland.



TO STAND THIS SEASON AT GREENLANE

THE THOROUGHBRED STALLION GLADSTONE

By Seaton Delaval from Miss Gladys, by Cuirassier.

FEES—Thoroughbred Mares £7 7 0
Farmers' Mares £5 5 0

Good grazing at One Tree Hill at 2s 6d per week.

For further particulars, apply to W. TOZER, Greenlane, Remuera.

HOTELS.—Unclassified.

RAILWAY HOTEL.

FORDELL.

J. COOPER Proprietor.

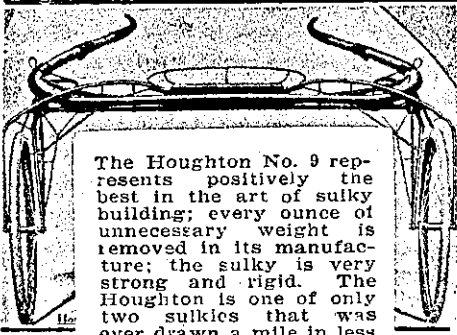
FIRST-CLASS ACCOMMODATION FOR THE TRAVELLING PUBLIC. WINES AND SPIRITS OF THE BEST BRANDS ONLY STOCKED.

CANTERBURY HOTEL.

METHVEN.

HUGH KENNEDY Proprietor.

HOUGHTON PERFECTED NO. 9.



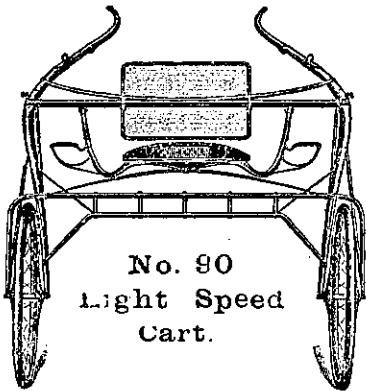
The Houghton No. 9 represents positively the best in the art of sulky building; every ounce of unnecessary weight is removed in its manufacture; the sulky is very strong and rigid. The Houghton is one of only two sulkies that was ever drawn a mile in less than two minutes. The

Houghton is the most popular sulky on the American tracks. Furnished with aluminium-lined wood rims and detachable Dunlop tyres. Price £33 10s.

Trist & Small, AGENTS.
145 CASHEL STREET, CHRISTCHURCH

The McMURRAY.

JUST THE CART FOR THE AMATEUR; SUITABLE EITHER FOR RACING OR TRAINING.



No. 90
Light Speed
Cart.

This cart is frequently drawn by some of the fastest horses in New Zealand. It suits country tracks down to the ground, being very narrow, making it much easier to get through a field of horses.

PRICE, £27 10s.

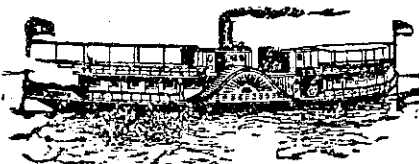
TRIGGS & DENTON,
89 Manchester Street, CHRISTCHURCH.

N.Z. LOAN AND MERCANTILE AGENCY CO., LTD.,

AUCKLAND.
Telephone No. 417.

TO RACING MEN, TRAINERS, AND OTHERS.
ELLERSLIE.

THE WELL-KNOWN TRAINING STABLES, owned by the late Mr. George Wright, situated on main road, Ellerslie; along with House and Level Section of Land, 165ft frontage to Panmure Road by 33ft frontage to Gladstone Road, being a corner section, which is growing more valuable every day. The front part could be cut into smaller sections and ought to sell rapidly at a good increase above price asked for the whole place.



THE DEVONPORT STEAM FERRY COMPANY (LIMITED).

STEAMERS—Eagle, Osprey, Britannia, Victoria, Takapuna, Birkenhead, Condor, Lyttelton, Albatross, Kestrel, Goshawk, Kawau and Ruru.

Steam Ferry Services to the Suburbs of DEVONPORT, NORTHCOTE, BIRKENHEAD and CHELSEA.

Steamers at short intervals daily from 6.30 a.m. to 11.40 p.m. Also all night service to Devonport.

Excursion Steamers run to the popular resorts—St. Heller's Bay, Lake Takapuna, and Pine Island—as notified in the daily papers.

Steamers on Hire for Excursions of any description and for extended trips. Comfortable Cabins, Every Convenience, ALEX. ALISON, Manager.



NORTHERN STEAMSHIP CO., LTD.

TARANAKI SERVICE. The s.s. RARAWA leaves Manukau every Sunday, Tuesday and Thursday, reaching New Plymouth in time for the express train to Wellington. The steamer leaves New Plymouth every Monday, Wednesday and Friday evenings at 8.30 p.m., on arrival of the through train.

LIVERY AND BAIT STABLES.

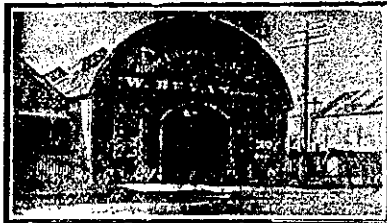
ROYAL MAIL COACHES.

H. MACKAY, Coach Proprietor, Martinborough. All Passenger Trains met at Featherston. Parcels forwarded to all parts of New Zealand. Saddle Horses and Vehicles always available.

EMPIRE LIVERY AND BAIT STABLES, FEATHERSTON.

B. STEVENS Proprietor.

Horses, also Gigs, Buggies, Brakes and Drags for Hire. Horses carefully broken. Carrying work undertaken.



THE EMPIRE LIVERY STABLES Palmerston-street, Westport (opposite Empire Hotel). WILLIAM REYNOLDS, Proprietor. Agent for N.Z. Express Co., J. J. Curtis and Co., and the Keir Forwarding Co., Wellington. Goods carefully packed and forwarded to all parts of the world. Tourist trips to the Buller Gorge, Dennistown Mines, Mokihini and Ngakawau. Granity and Cape Foulwind (the Isle of Wight of New Zealand).

PULLAN, ARMITAGE & CO.'S LIVERY STABLES.

Albert and Wellesley Streets. BRACKS, BUSES AND EVERY DESCRIPTION OF VEHICLE FOR HIRE. Carriages for Wedding Parties a Specialty. Horses Broken in and Bought, Sold and Exchanged.

MASONIC STABLES, WAITARA.

I beg to notify the residents of Waitara and the travelling public that I have taken over the Masonic Stables, Waitara. Gigs, buggies, cabs and drags always on hire, day or night. None but the best horses kept. Orders by post or wire carefully attended to. Phone 18. E. A. PEPPERELL.

MCDONALD'S LIVERY STABLES And MOTOR GARAGE, MARTON.

SIGNALL BROS. Proprietors.

Reliable cars always on hire. Careful drivers. Charges moderate. Coaches meet all trains.

Special attention paid to Horses on Livery, Double and Single Buggies, Ladies' and Gents' Saddle Horses on Hire. Special Landau for Weddings. Letters and telegrams promptly attended to. Telephone No. 51.

MARTON HOTEL LIVERY AND BAIT STABLES.

Coaches meet all Trains. First-class Stabling Accommodation. Reliable Horses and Gigs on Hire. Clement-Talbot Motor Car at service of patrons. Terms on application. Telephone No. 78.

S. F. AMER Proprietor.

WILSON'S ROYAL MAIL STABLES, TAIHAPE.

VEHICLES OF EVERY DESCRIPTION ON HIRE. MAIL CART MEETS EVERY TRAIN. CLIPPING DONE AT REASONABLE RATES. GOOD GARAGE FOR MOTOR CARS.

MANCHESTER STABLES, FEILDING.

Messrs. Richardson Bros., proprietors, assure the residents of this district that everything possible will be done to satisfy the requirements of the travelling public, and to earn the patronage of our clients. Horse-clipping. Cabs meet all trains. Orders and telegrams attended to. Telephone No. 83.

RICHARDSON BROS., THE SQUARE, FEILDING (At back of Manchester Hotel).

MIDDLETON'S HOTEL LIVERY AND BAIT STABLES.

OPUNAKE. The stopping place for all mail coaches. All classes of vehicles and horses always on hire. Parties driven to all parts and to the Mountain. Clipping done at shortest notice. T. SEARLE Proprietor.

RUTLAND LIVERY STABLES, ST. HILL STREET, WANGANUI.

VEHICLES OF ALL DESCRIPTIONS FOR HIRE. RUBBER TYRED LANDAUS AND GIGS A SPECIALITY. Cabs meet all trains. Clippings done daily. Telephone 120. WINDELBURN BROS. Proprietors.

TATTERSALL'S LIVERY AND BAIT STABLES.

EGMONT STREET, NEW PLYMOUTH.

J. W. WEST Proprietor.

FOR HIRE. — Wedding Carriages, Hearse, Mourning Coaches, Open and Close Cabs, Hansoms, Brakes, Waggonettes, Single and Double Buggies (open or hooded), First-class Ladies' and Gents' Saddle Horses.

Horses Bought, Sold, or Exchanged. Cabs meet all Trains. Orders and telegrams promptly attended to. Waiting Room for Ladies. Telephone No. 62.

WALKER'S STABLES, BULLS.

ALL TRAINS MET. MOTOR CARS ON HIRE. SADDLERY MANUFACTURED AND REPAIRED. FORWARDING AGENT. SAMPLE ROOMS.

J. E. WALKER Proprietor.

DALGLISH AND McDONALD, THE UP-TO-DATE LIVERY AND BAIT STABLES, HAMILTON.

Horses, Cabs and Buggies for Hire. Coaches meet all trains. Specials arranged for any part of the district.

CAMBRIDGE HORSE BAZAAR, LIVERY AND BAIT STABLES.

HORSES BOUGHT, SOLD OR EXCHANGED. COMMERCIAL TRAVELLERS SPECIALLY CATERED FOR.

CROWTHER AND BELL, Proprietors.

WESTPORT GRAND LIVERY STABLE, PALMERSTON ST.

Ask for ARTHUR CRADDOCK (Royal Mail Coaches, Westport to Charleston), who meets every train and steamer on arrival. Prompt attention and moderate charges. Splendid new livery and bait stables. Saddle horses and buggies on hire.

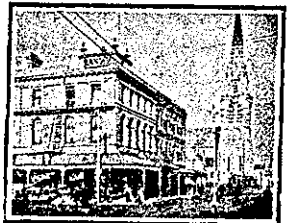
HOTELS.—Unclassified.

KING GEORGE HOTEL (Late Caversham Hotel), HIGH-STREET, CHRISTCHURCH.

L. W. JOHNSTONE Proprietor. The above Hotel is New and up to date in every particular. New Building, new Furnishings, new Staff, new Stock. This splendid new Hotel is now open to receive Boarders on the most favourable terms. Every attention and Home Comfort. Best of Wines, Spirits, and Beers.

EMPIRE HOTEL, FEILDING.

(Opposite the Railway Station.) P. T. PEDERSEN Proprietor. FIRST-CLASS ACCOMMODATION FOR TRAVELLERS. WINES AND SPIRITS OF BEST BRANDS ONLY STOCKED.



MASONIC HOTEL, CHRISTCHURCH.

C. LANGE Proprietor. (Late of Riccarton and White Swan Hotels.) Tariff: 6s per day. BEST QUALITY WINES AND SPIRITS. Phone 740.

THE MARQUIS OF NORMANBY HOTEL, CARTERTON.

THE LEADING COMMERCIAL HOTEL IN THE WAIRARAPA DISTRICT.

W. M. HALLEY Proprietor.

TURANGANUI HOTEL, Close to Wharf, Railway and Post Office, GISBORNE.

RE-MODELLED AND RE-FURNISHED AND RENOVATED THROUGHOUT. Country Visitors and the Public will find this a most convenient Hotel, with Excellent Accommodation, Good Table, and Airy Rooms.

A. F. SAUNDERS Proprietor. TARIFF 6s PER DAY. Tel. 51.

JUNCTION HOTEL, BEST ALES, WINES AND SPIRITS KEPT.

MODERATE TARIFF. CHAS. BADDELEY Proprietor.