

NEW ZEALAND HOTEL DIRECTORY—(CONTINUED). — PATRONISED BY KORSEMEN, CYCLISTS, MOTORISTS, SPORTSMEN, COMMERCIAL TRAVELLERS, AND THE THEATRICAL PROFESSION.

WANGANUI.



Established 1857. Tel. No. 46. P.O. Box No. 54. FITTED THROUGHOUT WITH ELECTRIC LIGHT

FOSTER'S HOTEL, TAUPO QUAY, WANGANUI.

J. R. FOSTER, Proprietor. Within Three Minutes of Railway Station and River Tourist Steamers.

WELLINGTON.

REJUVENESCENCE OF THE ALBERT HOTEL.

(Under New Management.)

JAMES McDONALD Proprietor.

This Hotel is in First-class Order, having been Re-furnished from cellar to ceiling. Bedrooms (large and airy) Electrically Lighted.

Letters and Telegrams receive prompt attention. Night and day porter. Excellent Cuisine.

Smoking room. Writing room. Drawing room.

TARIFF: 8s 6d per Day, or £2 2s per Week.

'Phone, 214 P.O. Box, 777.

FAMILY HOTEL, LOWER HUTT.

JOHN YOUNG Proprietor.

This Hotel offers Accommodation second to none in the district. Central position and close to the Post Office.

Billiards, Excellent Table, and Best Brands of Wines and Spirits. Only Speight's Beer drawn.

Good Stabling and Commodious Loose Boxes.

CENTRAL BREWERY, QUIN STREET, WELLINGTON.

BOTTLED ALE AND STOUT, specially Brewed for Home Use from Malt and Hops. Quarts, 7s; Pints, 4s; Kegs, 2s per gallon. Absolutely pure, and recommended by the medical fraternity.

T. B. DARRELL Proprietor.

THE EMPIRE HOTEL,

(LIMITED).

THE LEADING & MOST CENTRAL HOTEL IN WELLINGTON.

NEW ZEALAND HOTEL.

Close to Opera House. MANNERS STREET, WELLINGTON. Telephone No. 1701. P.O. Box 557.

Speight's Dunedin Ales on draught. Letters and telegrams receive prompt attention. Day and night porters in attendance. Hot and cold, plunge, shower and needle baths. Electric light throughout. Up-to-date fire escapes. Smoking, writing and drawing rooms. Trams from all parts of city and suburbs stop at the door.

TARIFF: 8s per day, or Two Guineas per week.

C. McMANUS Proprietor.

EMPIRE HOTEL, PETONE.

BEST BRANDS WINES AND SPIRITS.

LUNCHEON, 1s.

H. J. PALMER Proprietor. (Late of Lambton Quay, Wellington).

CITY HOTEL, WELLINGTON.

(Under New Management.) Telephone 442. SPEIGHTS' AND STAPLES' BEER ALWAYS ON TAP.

J. J. FIRTH Proprietor. (Late of Caledonian Hotel.)

NEW PROVINCIAL HOTEL, UPPER HUTT.

Containing over Fifty Rooms. FIRST-CLASS ACCOMMODATION FOR TOURISTS, TRAVELLERS, ETC.

Twenty-two Loose Boxes, Good Trout-fishing, Shooting and Scenery. Motor Parties well catered for. Benzine kept in stock.

R. QUINN Proprietor.

WELLINGTON.—Continued.

POST OFFICE HOTEL, WELLINGTON.

Offers First-class Accommodation at a Moderate Tariff. Excellent Cuisine. Telegrams: Post Office Hotel, Wellington. Telephone 2327.

MRS. M. McVINISH.

ROYAL HOTEL, LAMBTON QUAY, WELLINGTON.

Is now under the Proprietorship of CHARLES A. HARRISON, late New Plymouth, Waverley and Wanganui. Special attention devoted to the comfort of patrons. Best of liquors and good table. Five minutes from Railway Station. Absolutely no reffills. Tariff, 5s per day.

CENTRAL HOTEL, WELLINGTON.

ALBERT (Bert) MACE Proprietor. (Late of U.S.S. Coy.)

ONLY BEST BRANDS OF WINES AND SPIRITS IN STOCK.

DON'T FORGET TO LOOK UP "BERT" WHEN VISITING WELLINGTON.

BARRETT'S HOTEL, LAMBTON QUAY, WELLINGTON.

(Opposite Bank of New Zealand.)

Newly Built in Brick.

Over 70 Rooms. All Modern Conveniences.

Close to Wharf and Post Office. Excellent Cuisine. Day and Night Porters.

TARIFF, 8s PER DAY, £2 2s PER WEEK.

Letters and Telegrams receive prompt attention. 'Phone 1076.

R. A. MARSHALL Proprietor.

PIER HOTEL, WELLINGTON.

P. J. GRIFFIN, Proprietor.

TARIFF: 7s PER DAY.

Telephone 949.

Telegrams: Pier, Wellington.

WESTPORT.

COSMOPOLITAN HOTEL, PALMERSTON ST. WESTPORT.

J. E. TAYLOR Proprietor

WINES AND SPIRITS OF THE BEST GOOD ACCOMMODATION.

EMPIRE HOTEL, WESTPORT.

P.O. Box No. 7. TELEPHONE No. 14.

The above well-known hostelry now offers first rate accommodation to the travelling public.

Speight's Superior Brews always on Tap. FAMILY AND COMMERCIAL HOUSE OF WESTPORT.

H. H. McMASTER Proprietor.

ROYAL HOTEL, WESTPORT.

(Nearly Opp. Victoria Theatre.)

L. COCKERY Proprietor. (Late of Seddonville)

The Hotel is thoroughly fitted and up-to-date in all requirements. Nahr's celebrated Ales stocked. The Best of Wines and Spirits. First-class Billiard Table; the best on the Coast. Motto: Cleanliness, Civility and Comfort.

VICTORIA HOTEL, WESTPORT.

CHARLES DUNCAN Proprietor.

The Victoria is a splendidly situated hotel, with spacious accommodation. Mr. Duncan's steamer knowledge being most useful in catering for the public, so that comfort and the best of attention and liquors are assured.

PRINCE OF WALES HOTEL, WESTPORT.

JOHN COLLIGAN Proprietor.

REPLETE WITH EVERY MODERN CONVENIENCE, AND GUESTS MADE COMFORTABLE.

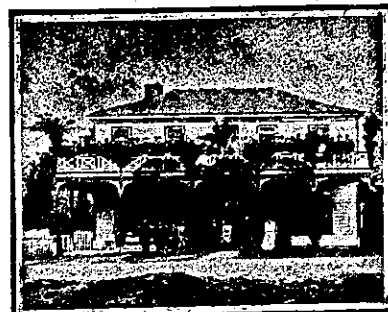
EXCELLENT TABLE AND LIQUORS OF THE CHOICEST.

WESTPORT BREWERY.

ASK FOR NAHR'S

PRIZE ALES, brewed from Pure MALT and HOPS. W NAHR & SONS.

WHANGAMOMONA.



WHANGAMOMONA HOTEL, WHANGAMOMONA.

F. CALGHER Proprietor.

Everything up-to-date. First-class Accommodation for Travellers and the General Public. Only Best Brands of Wines and Spirits kept in Stock.

WHANGAREI.



WHANGAREI HOTEL, WHANGAREI.

This fine House, just re-built in brick and furnished in up-to-date style, now offers unrivalled Accommodation to the Travelling Public.

Sample Room. Hot and Cold Baths. Two minutes' walk from Saltwater-Bathing Place.

Stabling Second to None.

Best Wines, Ales and Spirits Kept in Stock.

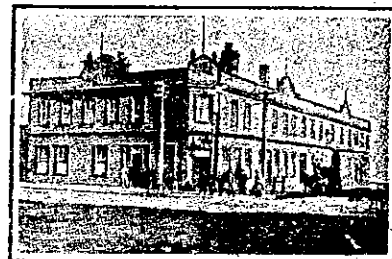
SAMUEL McMAHON Proprietor.

WOODVILLE.

LAING'S MASONIC HOTEL, WOODVILLE.

Excellent Accommodation for the Travelling Public at a Moderate Tariff. Best Wines, Spirits, Ales, etc. Good Billiard Table. Ample Stabling and Paddockings.

ANDREW LAING (Late of Foxton) Proprietor.



CLUB HOTEL, WOODVILLE.

A. SWINDALE Proprietor. (Late of Wellington.)

The recognised house in the district for Commercial Travellers. Sample rooms attached to the hotel. Tourists visiting Woodville will find excellent accommodation at the above hotel. Good fishing and shooting in and around the district. Letters and telegrams promptly attended to. Cabs leave hotel to meet all trains.

Tel. No. 1. P.O. Box 53.

ASK FOR Champion Ale and see that you get it.

Oceanic Fish Company, Ltd. Lower Nelson Street, AUCKLAND. Suppliers of all descriptions of FRESH AND SMOKED FISH.



RUTLAND HOTEL, WANGANUI.

GEO. McDONALD Proprietor.

THE HOME OF THE TOURIST.

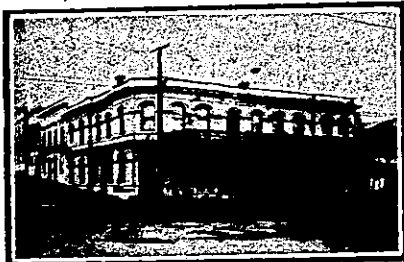
The above Hotel has just been rebuilt and newly furnished throughout in an up-to-date style. The reading, writing and smoke rooms are replete with every convenience. The greatest care is taken to maintain a reputation for home comfort. Dark room for photographers.



PROVINCIAL HOTEL, WANGANUI.

FIRST-CLASS ACCOMMODATION FOR THE TRAVELLING PUBLIC. ONLY THE BEST OF ALES, WINES AND SPIRITS KEPT IN STOCK.

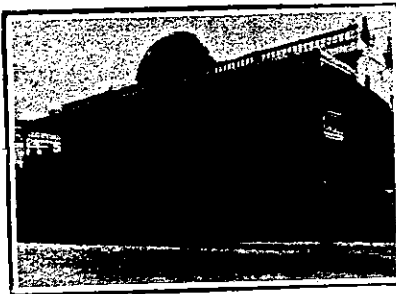
W. TUCK Proprietor.



CHAVANNES HOTEL, WANGANUI.

THE COMFORTABLE. A HOMELY HOME FOR VISITORS TO WANGANUI.

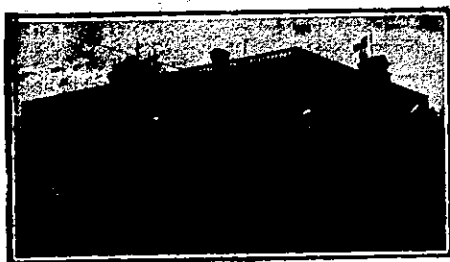
Every Home Comfort. Excellent Cuisine. Commodious SAMPLE ROOMS. J. G. SWAN Proprietor. Telephone 20. P.O. Box 21.



MCCARTHY'S HOTEL, WANGANUI.

IMMEDIATELY OPPOSITE RAILWAY STATION AND WHARVES.

C. J. MCCARTHY Proprietor. Telephone 135.



METROPOLITAN HOTEL, TAUPO QUAY, WANGANUI.

(One Minute from Post Office and Railway Station.) P.O. Box 133. Tel. 34. First-class accommodation. Excellent cuisine. TARIFF, 6s 6d Per Day.

T. H. NIXON Proprietor. (Late of New Criterion Hotel, Wanganui)