

NEW ZEALAND HOTEL DIRECTORY—(CONTINUED).—PATRONISED BY HORSEMEN, CYCLISTS, MOTORISTS, SPORTSMEN, COMMERCIAL TRAVELLERS AND THE THEATRICAL PROFESSION.

AUCKLAND.—Continued.

RAILWAY TERMINUS HOTEL
 QUEEN STREET, ONEHUNGA.
 The well known House for Travellers and Tourists.
 Excellent Table, wines, spirits and bottled beers. Beccombe's XXXX Ale on Draught.
 MRS. I. SMITH Proprietress.
 (Late of Papakura).



CRITERION HOTEL, OTAHUHU.
 Good Accommodation for the Travelling Public.
 Replete with every Modern Convenience.
 Only the Best Brands of Wines, Ales and Spirits, etc., kept on Stock.
 A. UNDERWOOD Proprietor.

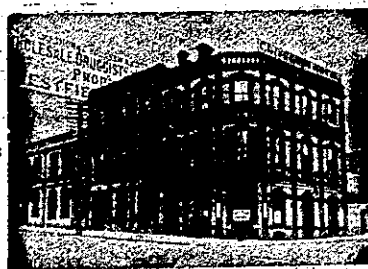


STAR HOTEL, OTAHUHU.
 H. G. GOODMAN Proprietor.
 The Best Wines, Spirits, Beers and Cigars. All the Comforts of a Home and a Good Table Kept. Charges Reasonable, and Civility the Rule of House. Commodious Stables. Good Paddocks. Billiards.

PRINCE OF WALES HOTEL, HOBSON-ST., AUCKLAND.
 H. S. BOOKER Proprietor.
 (Late of Lake Hotel Takapuna).

Every home comfort for visitors. Billiards, Billiards.
 Campbell and Ehrenfried's XXXX Prize Ale on Draught. The best brands of Wines and Spirits.

Metropolitan Hotel,
 Queen Street.
 Auckland.
J. MORRISON,
 Proprietor.
 (Late of the Royal.)



CRITERION HOTEL, ALBERT-ST., AUCKLAND.

COMMERCIAL AND FAMILY HOTEL, (NEWLY RENOVATED).

EXCELLENT WINES AND SPIRITS
 Best Accommodation for Tourists.
 D. J. MORRISON Proprietor

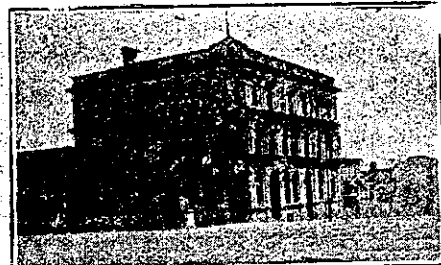
SHAKESPEARE HOTEL, ALBERT-ST., AUCKLAND.

J. BONNER
 (For Seven Years connected with the Trams).

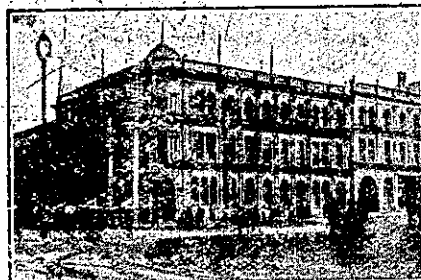
ONLY THE BEST WINES, ALES, AND SPIRITS ON DRAUGHT.

"THE NEW ZEALAND MOTOR AND CYCLE JOURNAL" is the only paper published in the Dominion exclusively devoted to Motoring and Cycling pursuits. Published monthly. Price 7s. 6d. — Arthur Cleave & Co., Ltd., Vulcan Lane, Auckland.

AUCKLAND.—Continued.

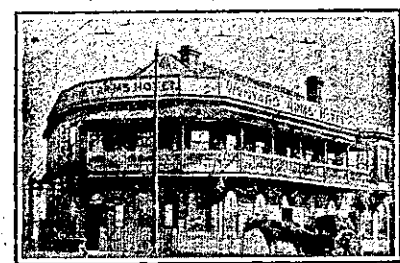


CITY HOTEL, corner of VICTORIA & HOBSON STS., AUCKLAND.
WALTER STIMPSON
 (Late of the Queen's Ferry),
 Will be glad to welcome Old and New Friends at the above Popular House.
 The Wines, Spirits, Ales and Cuisine will be found to be unexceptionable, while the Accommodation is thoroughly modern.

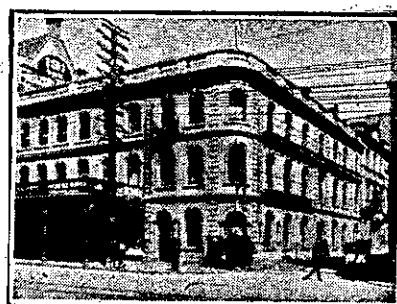


WAITEMATA HOTEL, Cor. QUEEN & CUSTOM STS., Auckland.
 Close to the Wharf and Railway Station.

VISITORS WILL FIND EVERY COMFORT AND CONVENIENCE
JOHN ENDEAN Proprietor.
 Telephone 539.



WYNYARD ARMS HOTEL, SYMONDS AND WELLESLEY STS.
H. A. LLOYD Proprietor.
 (Late Club Hotel, Ponsonby.)
 Good Accommodation for Visitors. Good Table. Moderate Charges. Beccombe's XXXX Ale on Draught. Only the Best of Wines and Spirits Stocked.
 Phone 1327.



BRITISH HOTEL, CORNER OF DURHAM AND QUEEN STREETS.
J. H. PAGNI (late Western and Oriental Hotels, Wellington), begs to invite all his friends and general public to inspect the new improvements at the above Hotel, which is now the most comfortable and up-to-date in Auckland. Visitors will find first-class accommodation. Nothing but the Best and Most Reliable Brands of Spirits, Wines, and Beer and Stout kept in stock. New Saloon Bar now open.

THE EDINBURGH CASTLE HOTEL, UPPER SYMONDS STREET, AUCKLAND.

YOU CAN'T MISS IT—END OF PENNY SECTION.

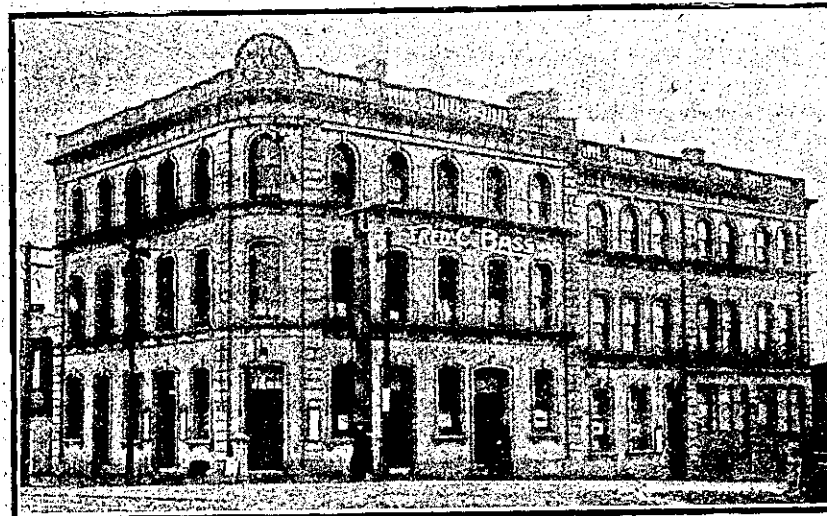
J. S. PALMER Proprietor



ALEXANDRA HOTEL, CORNER OF FEDERAL AND DURHAM STS., AUCKLAND.
TOM DOHERTY Proprietor
 (Late Barman of the Empire and Rob Roy Hotels).
 Telephone No. 2376.
 First-class Accommodation for Country Visitors.
 Best Brands of Wines and Spirits. 6s Per Day or 25s Per Week.

AUCKLAND.—Continued.

PRINCE ARTHUR HOTEL



Corner of Wellesley and Hobson Streets, AUCKLAND.
 The Premises have just been Renovated and Re-furnished throughout in an up-to-date manner, and comprise 50 single and double bedrooms, hot and cold water baths, smoke-room, drawing-room, sitting-room, billiard-room, and large dining-room, capable of seating 40 guests. It is one of the Finest Hotels in Auckland. Terms Moderate. Trams pass the door. (Penny Car from Wharf or Railway Station).
FRED C. BASS, Proprietor
 (Late U.S.S. Co. and Northern Waioa Hotel).

GLEESON'S HOTEL.
 Corner Custom-street west and Hobson-street, AUCKLAND.

VICTOR CORNAGA, Proprietor.
 Wines and Spirits of the Best Brands only kept in stock.
 First-class Accommodation for the Travelling Public.



IMPERIAL HOTEL, FORT-STREET, AUCKLAND.

Absolutely only the Best Wines and Spirits kept in stock. Tariff Moderate. Telephone No. 420.
JOHN KELLY Proprietor.

QUEEN'S FERRY HOTEL.

VULCAN LANE, AUCKLAND.

T. MARKWICK
 Begs to notify that he has taken over the above favourite Hostelry.

His trade principle is to keep nothing but the very best, and to aim at the comfort of his Patrons.

AWANUI

AWANUI HOTEL.

J. PEBBLES Proprietor.

First-class Accommodation.
ONLY THE BEST OF LIQUORS STOCKED.

BLENHEIM.

JOHN BARRY'S

MARLBOROUGH HOTEL, BLENHEIM

Good and substantial Accommodation with every comfort, at moderate charges. A favourite house for good whiskies and ales.

JAMES GLEESON'S

EMPIRE HOTEL, BLENHEIM, OPPOSITE TOWN HALL.

The Travelling Public made welcome with every modern comfort good catering and attendance affords, combined with best of liquors.

"THE NEW ZEALAND MOTOR AND CYCLE JOURNAL" is the only paper published in the Dominion exclusively devoted to Motoring and Cycling pursuits. Published monthly. Price, Sixpence.—Arthur Cleave and Co., Ltd., Vulcan Lane, Auckland.

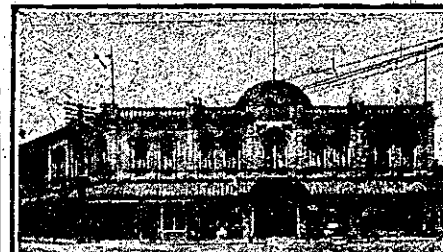
CAMBRIDGE.



CENTRAL HOTEL, CAMBRIDGE.
A. THOMAS Proprietor.
 First-class Accommodation for the Travelling Public.
 Only the Best Brands of Ales, Wines and Spirits kept.

TERMS MODERATE.

CHRISTCHURCH.



CITY HOTEL, TRIANGLE, CHRISTCHURCH.

Under entirely new management. The City Hotel is undoubtedly the most centrally situated house in town. It faces Cathedral Square, with Hereford-street running through and High-street and Colombe-street on either side. The Hotel affords excellent accommodation, and special attention is devoted to the comfort of patrons. Tariff moderate. Superior brands of wines and spirits, and Speight's prize ales on draught. Telegrams "City Hotel" promptly answered. Telephone 608. P.O. Box 558.
W. S. MITCHELL Proprietor
 (Late Ashburton, Amberley and South-bridge).



THE NEW CLARENDON HOTEL, CHRISTCHURCH.

CORNER OF OXFORD TERRACE AND WORCESTER-STREET.
 One Minute's Walk from General Post Office.

Recently Re-built. Superior Accommodation for Tourists and Travellers. All Modern Conveniences. Splendidly Situated.

D. COLLINS .. Proprietor.



STAR AND GARTER HOTEL, Christchurch.
 Corner Barbadoes-street and Oxford Terrace. **PAUL B. FLOOD,** Proprietor. Everything First-class, and Ales, Wines, and Spirits are of the highest Order.