

NEW ZEALAND HOTEL DIRECTORY—(CONTINUED). — PATRONISED BY HORSEMEN, CYCLISTS, MOTORISTS, SPORTSMEN, COMMERCIAL TRAVELLERS AND THE THEATRICAL PROFESSION.

AUCKLAND.—Continued.

RAILWAY TERMINUS HOTEL
 QUEEN STREET, ONEHUNGA.
 The well known House for Travellers
 Tourists.
 Excellent Table, wines, spirits and
 bottled beers. Secombe's XXXX Ale
 on draught.
 MRS. I. SMITH Proprietress.
 (Late of Papakura).



CRITERION HOTEL, OTAHUHU.
 Good Accommodation for the Travel-
 ling Public.
 Replete with every Modern Conveni-
 ence.
 Only the Best Brands of Wines, Ales,
 Spirits, etc., kept on Stock.

A. UNDERWOOD Proprietor.



STAR HOTEL, OTAHUHU.

H. G. GOODMAN Proprietor.
 The Best Wines, Spirits, Beers and
 Cigars. All the Comforts of a Home
 and a Good Table Kept. Charges Reason-
 able, and Civility the Rule of House.
 Commodious Stables. Good Paddocks.
 Billiards.

PRINCE OF WALES HOTEL,
 HOBSON-ST., AUCKLAND.

M. S. BOOKER Proprietor.
 (Late of Lake Hotel Takapuna).

Every home comfort for visitors.
 Billiards, Billiards.
 Campbell and Ehrenfried's XXXX
 Prize Ale on Draught. The best brands
 of Wines and Spirits.

**Metropolitan
 Hotel,** . . .
 Queen Street.
 Auckland.
J. MORRISON.
 Proprietor.
 (Late of the Royal.)



CRITERION HOTEL
 ALBERT-ST., AUCKLAND.

COMMERCIAL AND FAMILY HOTEL
 (NEWLY RENOVATED).

EXCELLENT WINES AND SPIRITS
 Best Accommodation for Tourists.

D. J. MORRISON Proprietor

SHAKESPEARE HOTEL,
 ALBERT-ST., AUCKLAND.

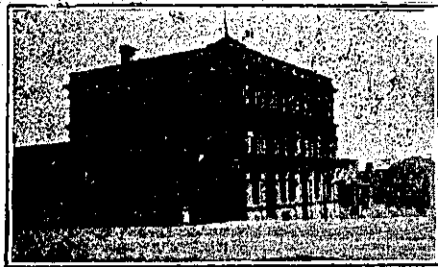
J. BONNER

(For Seven Years connected with the
 Trams).

ONLY THE BEST WINES, ALES, AND
 SPIRITS ON DRAUGHT.

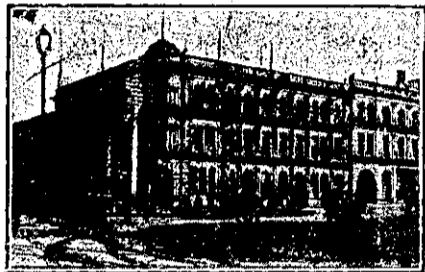
"THE NEW ZEALAND MOTOR AND
 CYCLE JOURNAL" is the only
 paper published in the Dominion ex-
 clusively devoted to Motoring and Cycling
 pursuits. Published monthly. Price
 2s. 6d. per annum.—Arthur Cleave & Co., Ltd.,
 Vulcan Lane, Auckland.

AUCKLAND.—Continued.



CITY HOTEL, corner of VICTORIA
 & HOBSON STS., AUCKLAND.

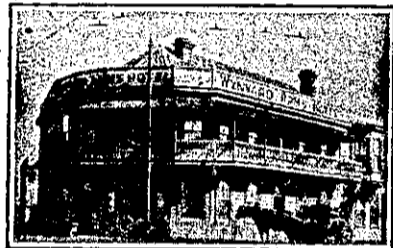
WALTER STIMPSON
 (Late of the Queen's Ferry),
 Will be glad to welcome Old and New
 Friends at the above Popular House.
 The Wines, Spirits, Ales and Cuisine
 will be found to be unexceptionable,
 while the Accommodation is thoroughly
 modern.



WAITEMATA HOTEL, Cor. QUEEN
 & CUSTOM STS., Auckland.
 Close to the Wharf and Railway
 Station.

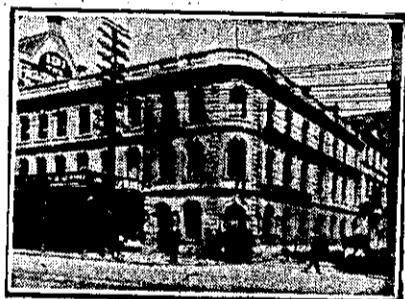
VISITORS WILL FIND EVERY COM-
 FORT AND CONVENIENCE.

JOHN ENDEAN Proprietor.
 Telephone 589.



WYNYARD ARMS HOTEL

SYMONDS AND WELLESLEY STS.
 H. A. LLOYD Proprietor.
 (Late Club Hotel, Ponsonby.)
 Good Accommodation for Visitors.
 Good Table. Moderate Charges.
 Secombe's XXXX Ale on Draught.
 Only the Best of Wines and Spirits
 Stocked.
 Phone 1327.



BRITISH HOTEL, CORNER OF DUR-
 HAM AND QUEEN STREETS.

J. H. PAGNI (late Western and
 Oriental Hotels, Wellington), begs to in-
 vite all his friends and general public to
 inspect the new improvements at the
 above Hotel, which is now the most
 comfortable and up-to-date in Auck-
 land. Visitors will find first-class ac-
 commodation. Nothing but the Best
 and Most Reliable Brands of Spirits,
 Wines, and Beer and Stout kept in
 stock. New Saloon Bar now open.

THE EDINBURGH CASTLE HOTEL,
 UPPER SYMONDS STREET,
 AUCKLAND.

YOU CAN'T MISS IT—END OF
 PENNY SECTION.

J. S. PALMER Proprietor



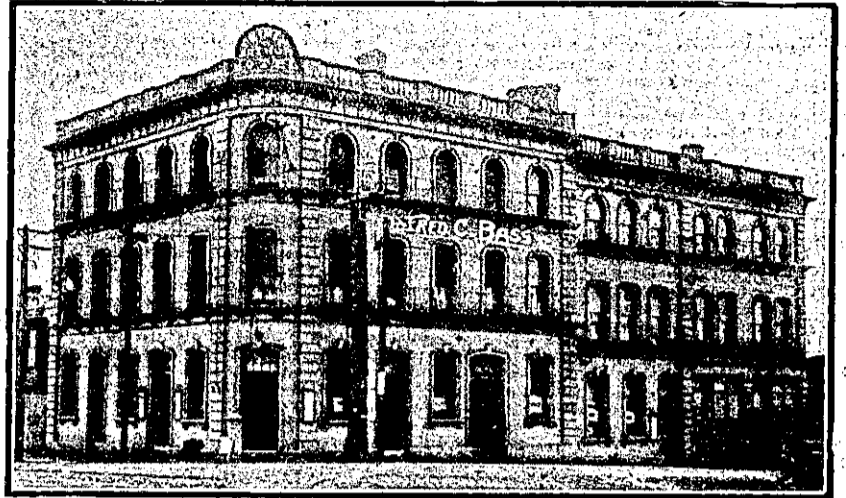
ALEXANDRA HOTEL,
 CORNER OF FEDERAL AND
 DURHAM STS., AUCKLAND.

TOM DOHERTY Proprietor
 (Late Barman of the Empire and Rob
 Roy Hotels).

Telephone No. 2376.
 First-class Accommodation for Country
 Visitors.
 Best Brands of Wines and Spirits.
 1s Per Day or 2s Per Week.

AUCKLAND.—Continued.

PRINCE ARTHUR HOTEL



Corner of Wellesley and Hobson Streets, AUCKLAND.

The Premises have just been Renovated and Re-furnished throughout
 in an up-to-date manner, and comprise 50 single and double bedrooms, hot and
 cold water baths, smoke-room, drawing-room, sitting-room, billiard-room, and
 large dining-room, capable of seating 40 guests. It is one of the Finest Hotels
 in Auckland. Terms Moderate. Trams pass the door. (Penny Car from
 Wharf or Railway Station).

FRED C. BASS, Proprietor
 (Late U.S.S. Co. and Northern Wairoa Hotel).

GLEESON'S HOTEL.

Corner Custom-street West and
 Hobson-street, AUCKLAND.

VICTOR CORNAGA, Proprietor.

Wines and Spirits of the Best Brands
 only kept in stock.
 First-class Accommodation for the
 Travelling Public.



IMPERIAL HOTEL, FORT-STREET,
 AUCKLAND.

Absolutely only the Best Wines and
 Spirits kept in stock. Tariff Moderate.
 Telephone No. 420.

JOHN KELLY Proprietor.

QUEEN'S FERRY HOTEL,

VULCAN LANE,
 AUCKLAND.

T. MARKWICK

Begs to notify that he has taken over the
 above favourite Hostelry.

His trade principle is to keep nothing
 but the very best, and to aim at the
 comfort of his Patrons.

AWANUI

A WANUI HOTEL.

J. PEEBLES Proprietor.

First-class Accommodation.

ONLY THE BEST OF LIQUORS
 STOCKED.

BLLENHEIM.

JOHN BARRY'S

MARLBOROUGH HOTEL, BLLENHEIM

Good and substantial Accommodation
 with every comfort, at moderate charges.
 A favourite house for good whiskies
 and ales.

JAMES GLEESON'S.

EMPIRE HOTEL, BLLENHEIM,
 OPPOSITE TOWN HALL.

The Travelling Public made welcome
 with every modern comfort good cater-
 ing and attendance affords, combined
 with best of liquors.

"THE NEW ZEALAND MOTOR AND
 CYCLE JOURNAL" is the only
 paper published in the Dominion ex-
 clusively devoted to Motoring and Cycling
 pursuits. Published monthly. Price,
 Sixpence.—Arthur Cleave and Co., Ltd.,
 Vulcan Lane, Auckland.

CAMBRIDGE.

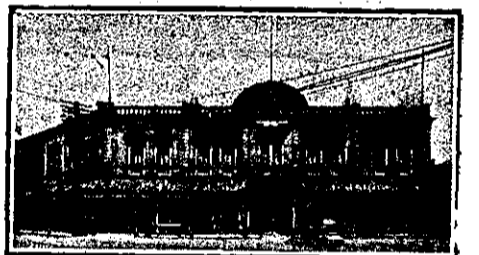


CENTRAL HOTEL, CAMBRIDGE.

A. THOMAS Proprietor.
 First-class Accommodation for the
 Travelling Public.
 Only the Best Brands of Ales, Wines
 and Spirits kept.

TERMS MODERATE.

CHRISTCHURCH.



**CITY HOTEL, TRIANGLE, CHRIST-
 CHURCH.**

Under entirely new management. The
 City Hotel is undoubtedly the most
 centrally situated house in town. It
 faces Cathedral Square, with Hereford-
 street running through and High-street
 and Colombo-street on either side. The
 Hotel affords excellent accommodation,
 and special attention is devoted to the
 comfort of patrons. Tariff moderate.
 Superior brands of wines and spirits,
 and Speight's prize ales on draught.
 Telegrams "City Hotel" promptly an-
 swered. Telephone 608. P.O. Box 558.
 W. S. MITCHELL Proprietor
 (Late Ashburton, Amberley and South-
 bridge).

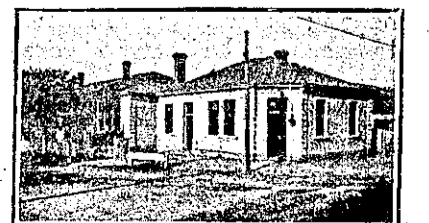


THE NEW CLARENDON HOTEL,
 CHRISTCHURCH,
 CORNER OF OXFORD TERRACE
 AND WORCESTER-STREET.

One Minute's Walk from General Post
 Office.

Recently Re-built. Superior Accom-
 modation for Tourists and Travellers.
 All Modern Conveniences. Splendidly
 Situated.

D. COLLINS .. Proprietor.



STAR AND GARTER HOTEL, Christ-
 church. Corner Barbadoes-street
 and Oxford Terrace. PAUL B. FLOOD,
 Proprietor. Everything First-class, and
 Ales, Wines, and Spirits are of the
 Highest Order.