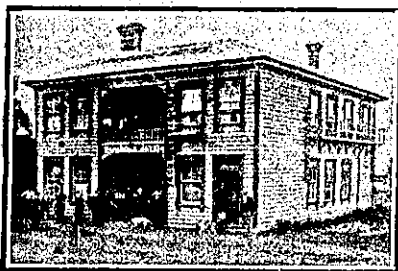


NEW ZEALAND HOTEL DIRECTORY—(CONTINUED).—PART OWNED BY ROSSMEN, CYCLISTS, MOTORISTS, SPORTSMEN, COMMERCIAL TRAVELLERS AND THE THEATRICAL PROFESSION.

PAPAKURA.

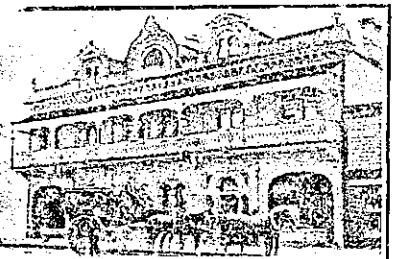


PAPAKURA HOTEL, PAPAKURA. Certificated house of the United Commercial Travellers' Association of New Zealand. Recently Renovated throughout. Splendid Accommodation and Cuisine. Large Rooms for use of Clubs. Saddle Horses and Buggies for hire to all parts of district.



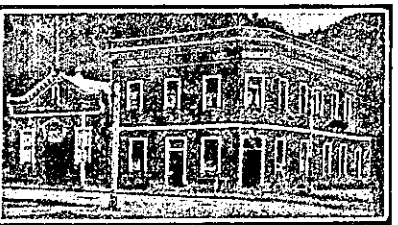
GLOBE HOTEL, PAPAKURA. ACCOMMODATION AND TABLE MY SPECIALITY. Horses and Vehicles for Hire to all parts of District. BEST BRANDS WINES AND SPIRITS GOOD TABLE.

RANGIORA.



JUNCTION HOTEL, RANGIORA. B. EDWARDS Proprietor. The Leading Hotel of the District. Splendid Accommodation for Travellers, Tourists and Families. Good Stabling. Best of Liquors.

REEFTON.



EXCHANGE HOTEL AND PRINCES THEATRE (Leading Theatre), REEFTON. TERMS MODERATE. A. J. CHETTEL Proprietor.

RIVERTON.



GREAT WESTERN HOTEL, RIVERTON. J. CRAWFORD Proprietor. The recognised house for Commercial, Visitors and Tourists. Every home comfort. First-class Cuisine. Wines, Spirits and Ales of the choicest. Within two minutes' walk of the Railway Station and Post Office.

RUSSELL.

DUKE OF MARLBOROUGH HOTEL, RUSSELL, BAY OF ISLANDS. (The First Licensed House in New Zealand.)

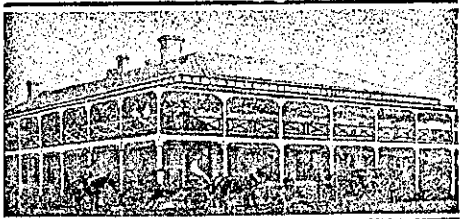
First-class Accommodation. Attention and Civility, as well as a Good Table, guaranteed, with "some" Fish of the choicest almost every day. Give the House a Call and see for yourself. Boats for Hire. Billiards, etc. Charges Reasonable. Nothing but the Best of Beers and Liquors kept in Stock. DAVID FORSYTH Proprietor.

SOUTHBRIDGE.

SOUTHBRIDGE HOTEL, SOUTH-BRIDGE. M. RIORDEN Proprietor.

Visitors to Southbridge and the Lakes District will be well satisfied at the above Hotel. Everything sweet and clean; comfortable beds, well-furnished sitting-rooms, good liquor and sumptuous table, with civility and attention gratis.

STRATFORD.



THE STRATFORD HOTEL, STRATFORD. F. RHODES Proprietor. The Best-appointed Hotel in the District. Five Commodious Sample Rooms. Wines and Spirits only best procurable. Speight's XXX Dunedin Beer always on draught. Telegrams promptly attended to. Competent Chef in charge of Cuisine. Telephone No. 31. P.O. Box No. 31.



CLUB HOTEL, STRATFORD. C. DIAMOND (Late Albion Hotel, Patea), Desires to intimate to old friends and new that he has taken over the above popular hostelry. All liquors of the highest quality. Speight's Beer always on draught. First-class Accommodation for the Travelling Public. Tariff, 4s 6d per day.

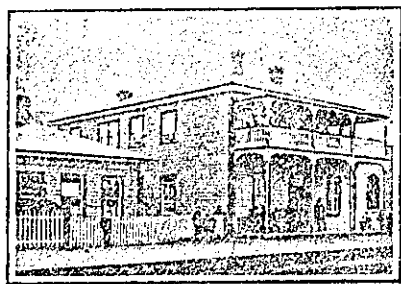
TAIHAPE.

THE GRETNA HOTEL, TAIHAPE. MRS. F. H. GIBBONS Proprietress. This well-known Hostelry has All the Comforts of a Home and conveniences of a first-class Hotel. The premises are furnished with a view to the comfort of the public. Tariff, 8s per day. Good Sample Room. Best Brands only. Passengers called for early trains.

TE AWAMUTU.

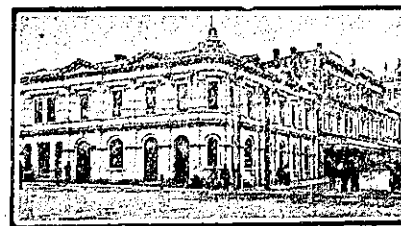
THE AWAMUTU HOTEL, TE AWAMUTU. JAMES JACKSON Proprietor. First-class Accommodation; Moderate Tariff. Only Best Brands Ales, Wines, A Free House. Dunedin Beer on Draught.

TE KUITI.



RAILWAY TEMPERANCE HOTEL, TE KUITI. F. H. SIMS Proprietor. Owing to the great increase of business, F.H.S. has been compelled to erect 12 additional rooms, including Large Commercial Room. Every Comfort and Attention. Travellers by the Early Train specially catered for. Next to Post and Telegraph Office. Telegrams: "Sims," Te Kuiti.

TIMARU.



THE EMPIRE HOTEL, TIMARU. LEADING HOTEL IN SOUTH CANTERBURY. DAVID LEECH Proprietor. (Late Provincial, Port Chalmers, and Grand, Westport.)

TIMARU.—Continued.

MELVILLE HOTEL, TIMARU. J. REILLY Proprietor. (Late of Wallingford Hotel, Temuka).

The Proprietor will be pleased to see Old and New Friends at the Melville. BEST WINES AND SPIRITS ONLY.

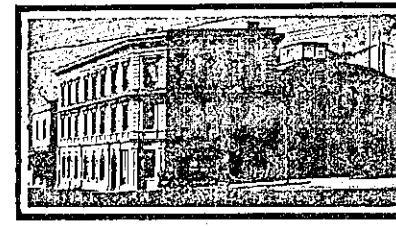
CLUB HOTEL, TIMARU. Close to Railway Station, and offering Excellent Accommodation to Travellers. Liberal Cuisine. Hot and Cold Baths. Best Brands of Liquors Stocked. Moderate Tariff. E. WARD Proprietor.



TIMARU HOTEL, STAFFORD ST., TIMARU. A. P. GAWNE Proprietor. This popular Hotel, which is in the principal street of Timaru, has recently undergone a thorough renovation inside and out, and is now looked upon as the cleanest and most comfortable house in the district. There is a large Dining-room (first-class table kept), and Sitting and Commercial Rooms adjoining. Choicest brands of Wines and Spirits, and Hote's Ales on Tap. A trial will convince one. Tariff: 4s 6d per day or 25s per week.



THE ROYAL HOTEL, TIMARU. FIRST-CLASS ACCOMMODATION. Timaru and Speight's Ales Always on Tap. WM. QUIRK Proprietor.



THE CROWN HOTEL, TIMARU.—First-class House. All Renovated throughout this year. First-class accommodation. Hote and Co. and Speight's Ales always on tap. Terms Reasonable. W. CONNELLY Proprietor.

TIRAU.

OXFORD ROYAL HOTEL, TIRAU. FIRST-CLASS ACCOMMODATION FOR TRAVELLERS. BEST WINES AND SPIRITS. S. L. BYGRAVE Proprietor.

TURAKINA.

RAILWAY HOTEL, TURAKINA. Passengers by all trains have sufficient time to obtain refreshments at the above Hotel. Ales, Wines and Spirits, also Tea, Coffee, and Sandwiches, can be obtained. The only place where liquor can be procured by railway passengers between Palmerston and New Plymouth. THOS. HARVIE Proprietor.

BEN NEVIS HOTEL, TURAKINA. This Hotel is replete with every convenience, and affords excellent Accommodation for the Commercial and Travelling public. Only the Best Wines, Ales and Spirits kept. E. BARNES Proprietor.

WAIROA.

WAIROA HOTEL, MARINE PARADE, WAIROA. J. DICKSON Proprietor. (Ten years at Masonic Hotel, Napier.) The most comfortable and up-to-date Hotel in the Wairoa County. Best of Wines, Spirits, Malt Liquors kept in stock. Cuisine the best. Private Suites for Families. Sample rooms for Commercial Travellers.

WAITARA.

WAITARA HOTEL, WAITARA. THE RECOGNISED HOUSE FOR COMMERCIAL TRAVELLERS. FIRST-CLASS ACCOMMODATION FOR THE TRAVELLING PUBLIC, AT MODERATE TARIFF.

HOT AND COLD PLUNGE AND SHOWER BATHS. NIGHT PORTER IN ATTENDANCE. Telephone, No. 7. P.O. Box 23. Letters and Telegrams promptly attended to. ALEX. KERR Proprietor.

MASONIC HOTEL, WAITARA. MRS. M. CUSACK Proprietress. The leading house for Commercial and Tourists. First-class accommodation for the travelling public at a moderate tariff. BEST WINES AND SPIRITS ONLY KEPT IN STOCK.

WAIKAWA.

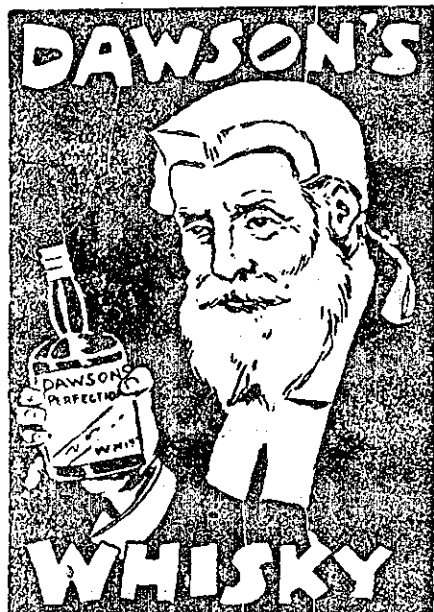
IMPERIAL HOTEL (Opposite Railway Station), WAIKAWA. A perfect home for Commercial and Travelling Public. Tariff moderate. Best bands of wines and spirits. Speight's Ale on Draught. All trains stop sufficient time for Refreshments. C. J. BARFORD (Late of Palmerston North).

WAITOTARA.

WAITOTARA HOTEL, WAITOTARA. BRUERE BROS. Proprietors. TARIFF, 4s. 6d. PER DAY. FIRST-CLASS ACCOMMODATION Good Stabling. Horses and Traps on Hire.

WHANGAHEHU.

BRIDGE HOTEL, WHANGAHEHU. (Under New Management.) G. S. McDONALD Has pleasure in announcing he has taken over the above well-known Hotel, and will supply all Leading Brands of Beer and Spirits. Extra paddocking accommodation is now provided for drovers.



PEARSON & Co., Ltd. Sole Agents for Wellington district.

Drink Peerless ALE Made from Pure Malt and Hops. Naturally Matured For Purity and Quality Unexcelled. INVALID STOUT A SPECIALITY

C. L. INNES & CO., Limited, HAMILTON. Brewer, Bottlers, and Aerated Water Manufacturers. Branches—Hamilton and Waihi. Aerated Waters—Taumarunui.

THE NEW ZEALAND MOTOR AND CYCLE JOURNAL is the only paper published in the Dominion exclusively devoted to Motoring and Cycling pursuits. Published monthly. Price, Sixpence.—Arthur Cleave and Co., Ltd., Vulcan Lane, Auckland.