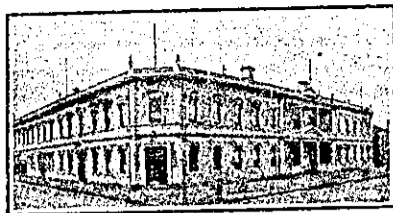


**NEW ZEALAND HOTEL DIRECTORY—(CONTINUED). — PATRONISED BY HORSEMEN, CYCLISTS, MOTORISTS, SPORTSMEN, COMMERCIAL TRAVELLERS AND THE THEATRICAL PROFESSION.**

**CHRISTCHURCH.—Continued.**



**WHERE TO STAY IN CHRISTCHURCH.**

**STOREY'S HOTEL,**

Right Opposite Railway Station.

Convenient to all parts of City and Suburbs. Electric Cars start from the door.

Proprietor... **WILLIAM JAMES** (Late of "Somerset Hotel," Ashburton).

**DARGAVILLE.**



**NORTHERN WAIROA HOTEL,** DARGAVILLE. EVERY POSSIBLE CONVENIENCE FOR THE TRAVELLING PUBLIC.

The BILLIARD ROOM is fitted with one of Alcock's Best Tables. Good Stables and Paddock adjoining the Premises.

F. L. HODGES ..... Proprietor.

**THE CENTRAL HOTEL,** DARGAVILLE.

(Close to Wharf and Railway Station).

Is now under the Management of **MR. S. THOMPSON.**

And the Travelling Public will find it one of the most Convenient Houses in the District.

ALL ACCOMMODATION.

BEST BRANDS OF WINES AND SPIRITS. Telegrams Promptly Attended to.

**DUNEDIN.**

**GLADSTONE HOTEL,** MACLAGGAN STREET, DUNEDIN.

**JOHN COLLINS** ..... Proprietor.

The most Centrally-situated Hotel in the City. First-class Accommodation for Tourists Travellers and Boarders. Suites of rooms for Families. Charges Moderate. A Special Feature: 1s Lunch from 12 to 2 o'clock. Hot, Cold and Shower Baths. The Very Best of Wines, Ales, and Spirits supplied.

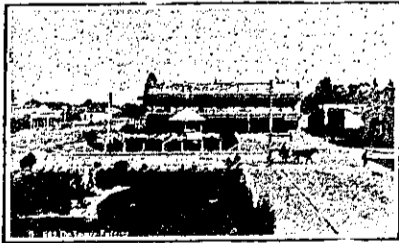
**FEATHERSTON.**

**EMPIRE HOTEL,** FEATHERSTON.

The **EMPIRE** is the appointed Hotel to the Wellington Commercial Travellers' Association and N.Z. Cyclists' Touring Club.

**JOHN A. TULLY** ..... Proprietor.

**FEILDING.**

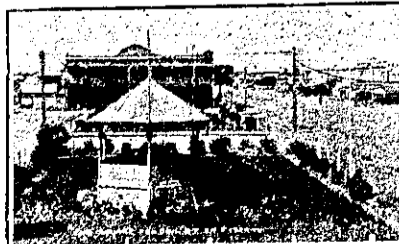


**HASTIE'S HOTEL,** FEILDING.

UNDER ENTIRELY NEW MANAGEMENT. TARIFF MODERATE. REPLETE WITH EVERY CONVENIENCE. FIVE LARGE SAMPLE ROOMS.

THE MOST MODERN AND UP-TO-DATE HOTEL ON THE COAST. P.O. BOX 66. TELEPHONE 34.

**H. McMANAWAY** ..... Proprietor. (Late of Argyle Hotel, Hunterville.)

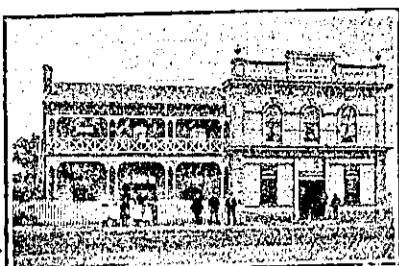


**MANCHESTER HOTEL,** FEILDING.

This centrally and conveniently situated Hotel offers the best Accommodation for the Travelling Public. Replete with every modern convenience. Best Brands of Ales, Wines, Spirits, etc., kept on Stock.

**J. O'MEARA** ..... Proprietor.

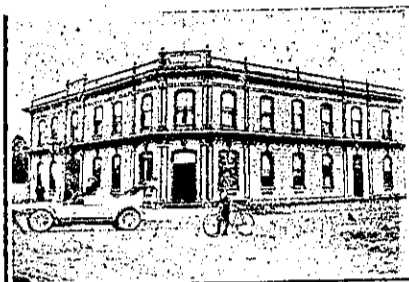
**FOXTON.**



**POST OFFICE HOTEL,** FOXTON.

BEST OF WINES AND SPIRITS. ONLY SPEIGHT'S BEER. Coaches leave Hotel for Shannon and Levin twice daily.

FIRST-CLASS ACCOMMODATION FOR TRAVELLERS. **W. F. GRAY** .. Proprietor.



**WHYTE'S HOTEL,** FOXTON.

The recognized house for Commercial Travellers. This Hotel offers superior accommodation to Travellers, and is a first-class family house in every respect. Letters and telegrams promptly attended to. Only the best of Ales, Wines and Spirits stocked.

**W. J. WHITE** ..... Proprietor.

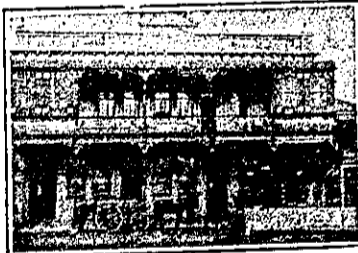


**MANAWATU HOTEL,** FOXTON.

**PERCY LUMSDEN** ..... Proprietor. This House has been the recognised rendezvous of the Theatrical Profession. Visitors will find every Comfort and Convenience at this well-known house. ONLY the BEST BRANDS OF WINES, SPIRITS AND ALES STOCKED.

**GREYMOUTH.**

**THE ALBION HOTEL,** GREYMOUTH.



THE NEWEST AND MOST UP-TO-DATE HOTEL ON THE WEST COAST.

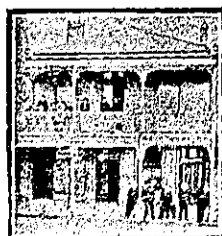
**FRANK GRIFFIN** PROPRIETOR.



**GILMER HOTEL,** GRESSON-STREET, GREYMOUTH

(Opposite the Wharf). **CHAS. BURRELL** ... Proprietor (Late of Kaitangata).

The Gilmer Hotel is a newly-built, up-to-date Brick Hotel, with every modern convenience. Boarders can rely upon every attention, and the household duties are under the personal supervision of Mrs. Burrell. Speight's Beer on tap, and the wines are the best procurable. Good Table, charges moderate. A Trial Solicited.



**CLUB HOTEL,** MAWHERA QUAY, GREYMOUTH.

Right opposite steamer landing. Excellent Accommodation for the Travelling Public. Only the Best Brands of Ales, Wines and Spirits kept. Hot and Cold Baths. Tariff, 6s per day.

**ALEX. LENNIE** .. Proprietor.

**GREYMOUTH.—Continued.**



**THE EMPIRE HOTEL,** GREYMOUTH. Centrally situated between Railway Station, G.P.O., Municipal Buildings and Wharf. The Empire Hotel has recently been renovated and re-furnished, and now offers the travelling public the most Comfortable Accommodation and a Good Table at moderate rates. The Empire being a "free house," patrons can rely upon getting the very best brands of Wines and Spirits and Draught and Bottled Ales.—**JAMES P. BEIRNE**, Proprietor.

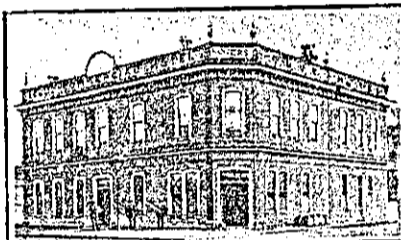


**ROYAL HOTEL,** GREYMOUTH.

First House from Greymouth Railway Station, and next new Government Buildings.

**JAMES S. VIAL** ..... Proprietor. Telegrams and Letters promptly answered. Telephone 51. P.O. Box 83 Tariff, 6s per day. Meals second to none in the Dominion. Speight and Co.'s Ales on Tap.

**GREYTOWN.**



**CLUB HOTEL,** GREYTOWN NORTH.

**C. G. WHITE** ..... Proprietor.

Up-to-date Sample Rooms. Appointed by Commercial Travellers' Association. BEST WINES AND SPIRITS ONLY KEPT IN STOCK.

**HAWERA.**

**CENTRAL HOTEL.**

THE WELL-KNOWN HOUSE IN HAWERA FOR TRAVELLERS AND TOURISTS.

EVERYTHING OF THE BEST.

**B. HARRINGTON,** Proprietor.

**HAMILTON.**



**COMMERCIAL HOTEL,** HAMILTON.

**DAVID NORDEN** ..... Proprietor

The Travelling Public specially Catered for.

TERMS MODERATE.

Telephone No. 12.



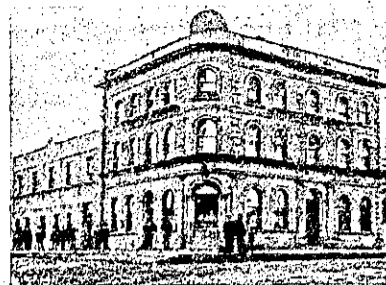
**HAMILTON HOTEL,** HAMILTON.

**J. B. HOOPER** ..... Proprietor

This Commodious and Up-to-date Hotel is replete with every modern convenience for the Comfort of Visitors. The Cuisine is first-class. Tariff Moderate.

ONLY THE BEST OF LIQUORS KEPT ON STOCK.

**HAMILTON.—Continued.**



**WAIKATO HOTEL,** HAMILTON EAST.

The Travelling Public will find every modern comfort and convenience at this well-known and popular Hotel.

**GEORGE B. MAIN,** Proprietor.

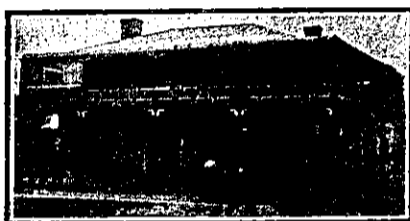


**ROYAL HOTEL,** HAMILTON EAST.

Good Accommodation. Best Brands of Wines and Spirits. Good Stabling. Moderate Tariff.

**JOHN T. COUGHLAN**, ..... Proprietor (Late of Masonic Hotel, Wanganui.)

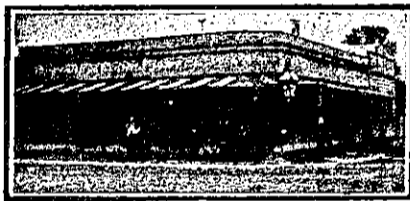
**HOKITIKA.**



**RAILWAY HOTEL,** HOKITIKA.—

First house from Railway Station. Good accommodation for the travelling public at moderate rates. The Railway Hotel is the most convenient for travellers of all classes, being practically at the station gates. The accommodation is good, and every comfort of guests is studied. Everything of the best is served and guaranteed.

**HENRY JONES** .. Proprietor.



**MARQUIS OF LORNE HOTEL,** HOKITIKA.—

Three minutes' walk from Railway Station. **MRS. M. BERGSTROM**, Proprietress. Most comfortable accommodation for travelling public at a moderate tariff. Motto: "Cleanliness and Comfort." Best of Wines, Spirits and Ales only stocked.

**HUNTLY.**

**HUNTLY HOTEL,** HUNTLY.

**L. B. HARRIS** ..... Proprietor.

This Hotel is now one of the largest in the Waikato. All trains stop at Huntly, and the Hotel is a few yards from the Station. First-class Accommodation and Excellent Table.

**KAWAKAWA.**



**JUNCTION HOTEL,** KAWAKAWA.

**T. SHEEN** ..... Proprietor.

Mr. Sheen will be pleased to meet his numerous friends at the above well-known favourite and spacious Hostelry, and hopes by strict attention and civility to customers to merit a continuance of the liberal support accorded to the House in the past. Wines, Spirits and Beers of the First Quality. Billiards, Buggies, etc. Sample Rooms. The Best Accommodation. A Good Table kept. Charges Moderate.

**THE NEW ZEALAND MOTOR AND CYCLE JOURNAL**

Is the only paper published in the Dominion exclusively devoted to Motor-ing and Cycling pursuits.

Price, 6s 6d per annum.

**ARTHUR CLEAVE AND CO., LTD.** VULCAN LANE.