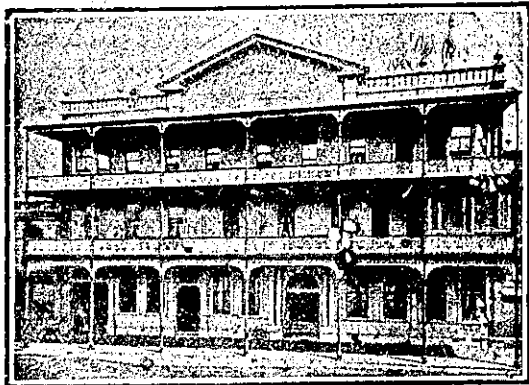


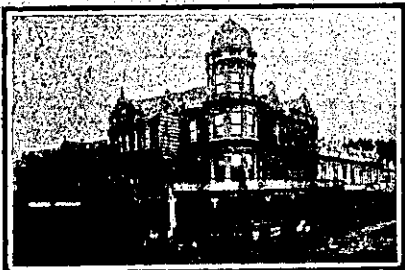
NEW ZEALAND HOTEL DIRECTORY—(CONTINUED). — PATRONISED BY ROBBERS, CYCLISTS, MOTORISTS, SPORTSMEN, COMMERCIAL TRAVELLERS, AND THE THEATRICAL PROFESSION.

WANGANUI.



Established 1857.  
Tel. No. 46. P.O. Box No. 54.  
FITTED THROUGHOUT  
WITH ELECTRIC LIGHT  
**FOSTER'S HOTEL,**  
Nearly opposite Town Bridge,  
TAUPO QUAY, WANGANUI.

J. R. FOSTER, Proprietor.  
Within Three Minutes of  
Railway Station and River  
Tourist Steamers.



**RUTLAND HOTEL, WANGANUI.**

THOS. LAWLESS ..... Proprietor.

THE HOME OF THE TOURIST.

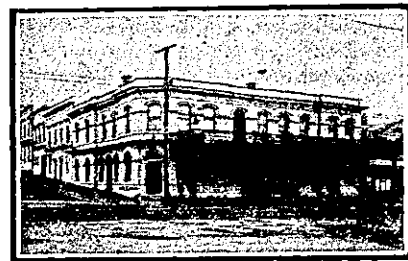
The above Hotel has just been rebuilt and newly furnished throughout in an up-to-date style. The reading, writing and smoke rooms are replete with every convenience. The greatest care is taken to maintain a reputation for home comfort. Dark room for photographers.



**PROVINCIAL HOTEL, WANGANUI.**

FIRST-CLASS ACCOMMODATION FOR THE TRAVELLING PUBLIC. ONLY THE BEST OF ALES, WINES, AND SPIRITS KEPT IN STOCK.

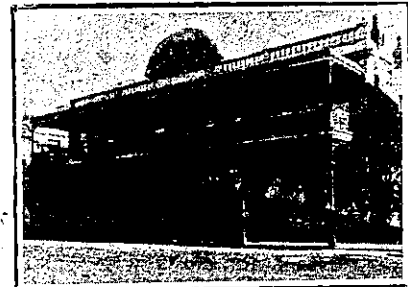
W. TUCK ..... Proprietor.



**CHAVANNES' HOTEL, WANGANUI.**

THE COMFORTABLE.  
A HOMELY HOME FOR VISITORS TO WANGANUI.

Every Home Comfort. Excellent Cuisine. Commodious SAMPLE ROOMS.  
J. G. SWAN ..... Proprietor.  
Telephone 30. P.O. Box 21



**MCCARTHY'S HOTEL, WANGANUI.**

IMMEDIATELY OPPOSITE RAILWAY STATION AND WHARVES.

C. J. MCCARTHY ..... Proprietor.  
Box 135. Telephone 147.

WELLINGTON.

REJUVENESCENCE OF THE  
**ALBERT HOTEL.**

(Under New Management.)

JAMES McDONALD ..... Proprietor.

This Hotel is in First-class Order, having been Re-furnished from cellar to ceiling. Bedrooms (large and airy) Electrically Lighted.

Letters and Telegrams receive prompt attention. Night and day porter. Excellent Cuisine.  
Smoking room. Writing room. Drawing room.

TARIFF: 8s 6d per Day, or £2 2s per Week.

'Phone, 214 P.O. Box, 777.

**FAMILY MOTEL, LOWER HUTT.**

JOHN YOUNG ..... Proprietor.

This Hotel offers Accommodation second to none in the district. Central position and close to the Post Office.

Billiards, Excellent Table, and Best Brands of Wines and Spirits. Only Speight's Beer drawn.  
Good Stabling and Commodious Loose Boxes.

**CENTRAL BREWERY, QUIN STREET, WELLINGTON.**

BOTTLED ALE AND STOUT, specially Brewed for Home Use from Malt and Hops. Quarts, 7s; Pints, 4s; Kegs, 2s per gallon. Absolutely pure, and recommended by the medical fraternity. Orders promptly attended to. A trial solicited.  
Stent and Co. 'Phone 571.

T. B. DARRELL .. Proprietor.

**THE EMPIRE HOTEL,**

(LIMITED).

THE LEADING & MOST CENTRAL

HOTEL IN WELLINGTON.

**EMPIRE HOTEL,**

PETONE.

BEST BRANDS WINES AND SPIRITS.

LUNCHEON, 1s.

H. J. PALMER ..... Proprietor.

(Late of Lambton Quay, Wellington).

**RAILWAY HOTEL,**

LOWER HUTT.

THIS OLD ESTABLISHED HOUSE

IS NOW IN CHARGE OF

R. STANSELL.

WELLINGTON.—Continued.

**VISITORS & TOURISTS**

May rely upon having

**EXCELLENT ACCOMMODATION**

And finding everything First-class at the

—AT—  
**LOWER HUTT.**

Half-hour Drive from Trentham and One Hour from Wellington.

Tariff, £2 2s. per Week.

**TOM KINGSTON, Proprietor**

**POST OFFICE HOTEL, WELLINGTON.**

Offers First-class Accommodation at a Moderate Tariff. Excellent Cuisine. Telegrams: Post Office Hotel, Wellington. Telephone 2327.

MRS. M. McVINISH.

**CITY HOTEL, WELLINGTON.**

(Under New Management.)

Telephone 442.

SPEIGHTS' AND STAPLES' BEER ALWAYS ON TAP.

J. J. FIRTH ..... Proprietor.  
(Late of Caledonian Hotel.)

**NEW PROVINCIAL HOTEL, UPPER HUTT.**

Containing over Fifty Rooms.

FIRST-CLASS ACCOMMODATION FOR TOURISTS, TRAVELLERS, ETC.

Twenty-two Loose Boxes, Good Trout-fishing, Shooting and Scenery. Motor Parties well catered for. Benzine kept in stock.

R. QUINN ..... Proprietor.

**BARRETT'S HOTEL.**

LAMBTON QUAY, WELLINGTON.  
(Opposite Bank of New Zealand.)

Newly Built in Brick.

Over 70 Rooms. All Modern Conveniences.

Close to Wharf and Post Office. Excellent Cuisine. Day and Night Porters.

TARIFF, 8s PER DAY. £2 2s PER WEEK.

Letters and Telegrams receive prompt attention. 'Phone 1076.

W. J. CONNER ..... Proprietor.

**Foresters' Arms Hotel**  
Ghuznee St., Wellington.

This old-established House is now under entirely new management. Absolutely no re-filling of bottles, consequently the Best of Wines and Spirits always obtainable.

STAPLE'S XXXX ALE ON TAP

S. J. BIRD,

Tel. 151.

PROPRIETRESS.

**ROYAL HOTEL,**

LAMBTON QUAY, WELLINGTON.

Is now under the Proprietorship of CHARLES A. HARRISON, late New Plymouth, Waverley and Wanganui. Special attention devoted to the comfort of patrons. Best of liquors and good table. Five minutes from Railway Station. Absolutely no refills. Tariff, 5s per day.

**THE NEW ZEALANDER HOTEL.**

Close to Opera House.

MANNERS STREET, WELLINGTON.

Telephone No. 1701. P.O. Box 557.

Speight's Dunedin Ales on draught. Letters and telegrams receive prompt attention. Day and night porters in attendance. Hot and cold, plunge, shower and needle baths. Electric light throughout. Up-to-date fire escapes. Smoking, writing and drawing rooms. Trams from all parts of city and suburbs stop at the door.

TARIFF: 8s per day, or Two Guineas per week.

C. McMANUS ..... Proprietor.

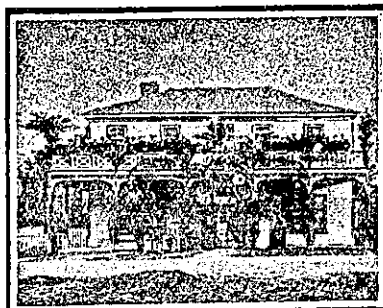
If you want GOOD LETTERPRESS and Careful Work, send it along to

**ARTHUR CLEAVE & CO., LTD.,**  
PRINTERS, BOOKBINDERS, AND PUBLISHERS.

Vulcan Lane, AUCKLAND.

Printed and Published by Arthur Cleave, of Ellerslie, at his Registered Printing Office, Vulcan Lane, Auckland, for the Proprietors, Arthur Cleave and Co. Ltd., THURSDAY, MAY 18, 1911.

WHANGAMOMONA.



**WHANGAMOMONA HOTEL,**

WHANGAMOMONA.

WM. ABBOTT, Proprietor. Everything up to date. First-class Accommodation for Travellers and the General Public. Only Best Brands of Wines and Spirits kept in Stock.

WESTPORT.

**COSMOPOLITAN HOTEL,**

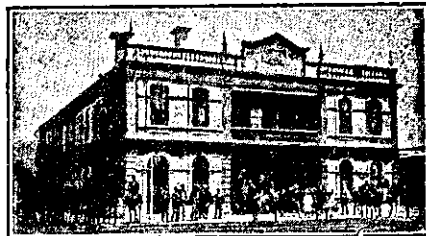
PALMERSTON ST. WESTPORT.

J. E. TAYLOR .. PROPRIETOR.

WINES AND SPIRITS OF THE BEST.

GOOD ACCOMMODATION.

WHANGAREI.



**WHANGAREI HOTEL,**

WHANGAREI.

This fine House, just re-built in brick and furnished in up-to-date style, now offers unrivalled Accommodation to the Travelling Public.

Sample Room. Hot and Cold Baths. Two minutes' walk from Saltwater Bathing Place.

Stabling Second to None. Best Wines, Ales and Spirits Kept in Stock.

SAMUEL McMAHON ... Proprietor

WOODVILLE.

**LAING'S MASONIC HOTEL,**

WOODVILLE.

Excellent Accommodation for the Travelling Public at a Moderate Tariff. Best Wines, Spirits, Ales, etc. Good Billiard Table.

Ample Stabling and Paddocking.

ANDREW LAING (Late of Foxton) Proprietor.

NOW PUBLISHED.

**THE NEW ZEALAND HAND-BOOK.**

BOOK.

SHIPPERS AND IMPORTERS'

GUIDE,

TRADES AND PROFESSIONAL

DIRECTORY.

The success of the last edition of

"THE NEW ZEALAND HAND-BOOK"

was of so gratifying a character

that the publishers have decided

to continue the issue yearly.

This edition is brought up to date,

and contains many new features of

interest, Maps and illustrations, etc.

ARTHUR CLEAVE & CO.,

Vulcan Lane, Auckland.

**The New Zealand Motor and Cycle Journal**

Is the only Paper published in the Dominion exclusively devoted to Motoring and Cycling pursuits.

It is the recognised organ of the various Automobile Associations, and should be in the hands of every Motorist in the Dominion.

Published Monthly—Price Threepence, or 3/6 per annum.

Order from the Publishers—Arthur Cleave & Co., Ltd., Auckland.