

NEW ZEALAND HOTEL DIRECTORY—(CONTINUED).—PATRONISED BY HORSEMEN, CYCLISTS, MOTORISTS, SPORTSMEN, COMMERCIAL TRAVELLERS, AND THE THEATRICAL PROFESSION.

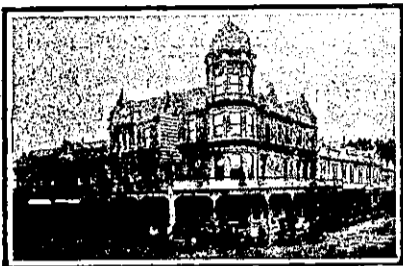
WANGANUI.



Established 1857.
Tel. No. 46. P.O. Box No. 54.
FITTED THROUGHOUT
WITH ELECTRIC LIGHT

FOSTER'S HOTEL,
Nearly opposite Town Bridge.
TAUPO QUAY, WANGANUI.

J. R. FOSTER, Proprietor.
Within Three Minutes of
Railway Station and River
Tourist Steamers.



RUTLAND HOTEL, WANGANUI.

THOS. LAWLESS Proprietor.

THE HOME OF THE TOURIST.

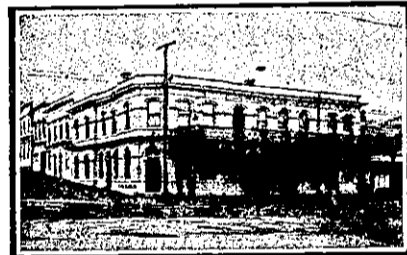
The above Hotel has just been rebuilt and newly furnished throughout in an up-to-date style. The reading, writing and smoke rooms are replete with every convenience. The greatest care is taken to maintain a reputation for home comfort. Dark room for photographers.



PROVINCIAL HOTEL, WANGANUI.

FIRST-CLASS ACCOMMODATION FOR THE TRAVELLING PUBLIC. ONLY THE BEST OF ALES, WINES AND SPIRITS KEPT IN STOCK.

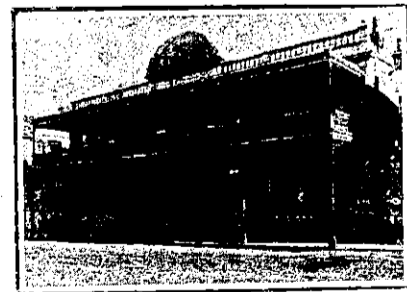
W. TUCK Proprietor.



CHAVANNES' HOTEL, WANGANUI.

THE COMFORTABLE.
A HOMELY HOME FOR VISITORS TO WANGANUI.

Every Home Comfort. Excellent Cuisine. Commodious SAMPLE ROOMS.
J. G. SWAN Proprietor.
Telephone 30. P.O. Box 21



MCCARTHY'S HOTEL, WANGANUI.

IMMEDIATELY OPPOSITE RAILWAY STATION AND WHARVES.

C. J. MCCARTHY Proprietor.
P.O. Box 135. Telephone 147.

WELLINGTON.—Continued.

VISITORS & TOURISTS

May rely upon having

EXCELLENT ACCOMMODATION

And finding everything First-class at the

—AT—
LOWER HUTT.

Half-hour Drive from Trentham and One Hour from Wellington.

Tariff, £2 2s. per Week.

TOM KINGSTON, Proprietor

POST OFFICE HOTEL, WELLINGTON.

Offers First-class Accommodation at a Moderate Tariff. Excellent Cuisine. Telegrams: Post Office Hotel, Wellington. Telephone 2827.

MRS. M. McVINISH.

CITY HOTEL, WELLINGTON.

(Under New Management.)
Telephone 442.

SPEIGHTS' AND STAPLES' BEER ALWAYS ON TAP.

J. J. FIRTH Proprietor.
(Late of Caledonian Hotel.)

NEW PROVINCIAL HOTEL, UPPER HUTT.

Containing over Fifty Rooms. FIRST-CLASS ACCOMMODATION FOR TOURISTS, TRAVELLERS, ETC.

Twenty-two Loose Boxes, Good Trout-fishing, Shooting and Scenery. Motor Parties well catered for. Benzine kept in stock.

R. QUINN Proprietor.

BARRETT'S HOTEL.

LAMBTON QUAY, WELLINGTON.
(Opposite Bank of New Zealand.)

Newly Built in Brick. Over 70 Rooms. All Modern Conveniences.

Close to Wharf and Post Office. Excellent Cuisine. Day and Night Porters.

TARIFF, 8s PER DAY. £2 2s PER WEEK.

Letters and Telegrams receive prompt attention. Phone 1076.

W. J. CONNER Proprietor.

Foresters' Arms Hotel
Ghuznee St., Wellington.

This old-established House is now under entirely new management. Absolutely no re-filling of bottles, consequently the Best of Wines and Spirits always obtainable.

STAPLE'S XXXX ALE ON TAP

S. J. BIRD, PROPRIETRESS.
Tel. 151.

ROYAL HOTEL, LAMBTON QUAY, WELLINGTON.

Is now under the Proprietorship of CHARLES A. HARRISON, late New Plymouth, Waverley and Wanganui. Special attention devoted to the comfort of patrons. Best of liquors and good table. Five minutes from Railway Station. Absolutely no refills. Tariff, 5s per day.

THE NEW ZEALANDER HOTEL.

Close to Opera House, MANNERS STREET, WELLINGTON. Telephone No. 1701. P.O. Box 557.

Speight's Dunedin Ales on draught. Letters and telegrams receive prompt attention. Day and night porters in attendance. Hot and cold, plunge, shower and needle baths. Electric light throughout. Up-to-date fire escapes. Smoking, writing and drawing rooms. Trams from all parts of city and suburbs stop at the door.

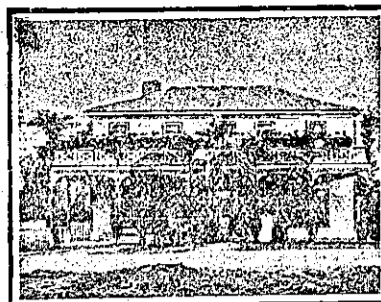
TARIFF: 8s per day, or Two Guineas per week.

C. McMANUS Proprietor.

If you want GOOD LETTERPRESS and Careful Work, send it along to **ARTHUR CLEAVE & CO., LTD.,** PRINTERS, BOOKBINDERS, AND PUBLISHERS. Vulcan Lane, AUCKLAND.

Printed and Published by Arthur Cleave, of Ellerslie, at his Registered Printing Office, Vulcan Lane, Auckland, for the Proprietors, Arthur Cleave and Co. Ltd., THURSDAY, APRIL 20, 1911.

WHANGAMOMONA.



WHANGAMOMONA HOTEL,

WHANGAMOMONA.

WM. ABBOTT, Proprietor. Everything up to date. First-class Accommodation for Travellers and the General Public. Only Best Brands of Wines and Spirits kept in Stock.

WESTPORT.

COSMOPOLITAN HOTEL, PALMERSTON ST, WESTPORT.

J. E. TAYLOR .. PROPRIETOR.

WINES AND SPIRITS OF THE BEST. GOOD ACCOMMODATION.

WHANGAREI.



WHANGAREI HOTEL, WHANGAREI.

This fine House, just re-built in brick and furnished in up-to-date style, now offers unrivalled Accommodation to the Travelling Public.

Sample Room. Hot and Cold Baths. Two minutes' walk from Saltwater Bathing Place.

Stabling Second to None. Best Wines, Ales and Spirits Kept in Stock.

SAMUEL McMAHON ... Proprietor.

WOODVILLE.

CENTRAL HOTEL, WOODVILLE.

H. STACE Proprietor.

FIRST-CLASS ACCOMMODATION. BEST QUALITY OF WINES AND SPIRITS.

LAING'S MASONIC HOTEL, WOODVILLE.

Excellent Accommodation for the Travelling Public at a Moderate Tariff. Best Wines, Spirits, Ales, etc. Good Billiard Table. Ample Stabling and Paddockings.

ANDREW LAING (Late of Foxton) Proprietor.

NOW PUBLISHED.

THE NEW ZEALAND HAND-BOOK.

SHIPPERS AND IMPORTERS' GUIDE, TRADES AND PROFESSIONAL DIRECTORY.

The success of the last edition of "THE NEW ZEALAND HAND-BOOK" was of so gratifying a character that the publishers have decided to continue the issue yearly.

This edition is brought up to date, and contains many new features of interest, Maps and illustrations, etc.

ARTHUR CLEAVE & CO.,

Vulcan Lane, Auckland.

The New Zealand Motor and Cycle Journal

is the only Paper published in the Dominion exclusively devoted to Motoring and Cycling pursuits.

It is the recognised organ of the various Automobile Associations, and should be in the hands of every Motorist in the Dominion.

Published Monthly—Price Threepence, or 3/6 per annum.

Order from the Publishers—Arthur Cleave & Co., Ltd., Auckland.