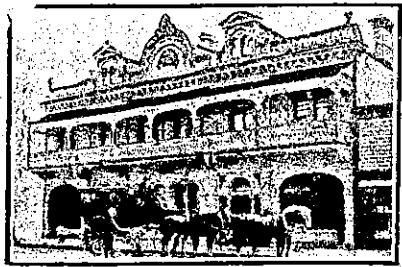


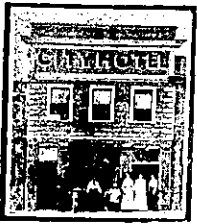
NEW ZEALAND HOTEL DIRECTORY—(CONTINUED). — PART OWNED BY HORSEMEN, CYCLISTS, MOTORISTS, SPORTSMEN, COMMERCE AND TRAVELLERS AND THE THEATRICAL PROFESSION.

RANGIORA.



JUNCTION HOTEL, RANGIORA.
B. EDWARDS Proprietor.
The Leading Hotel of the District.
Splendid Accommodation for Travellers,
Tourists and Families.
Good Stabling. Best of Liquors.

REEFTON.



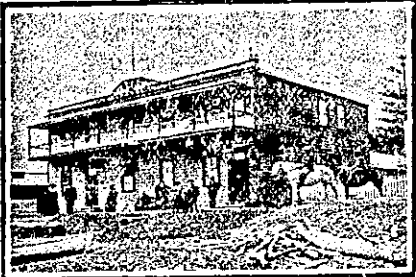
CITY HOTEL, REEFTON.
The Most Popular House in Reefton.
Under the Management of MRS. McMAHON.

EVERY COMFORT FOR VISITORS AND THE TRAVELLING PUBLIC.



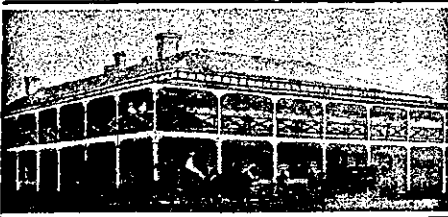
EXCHANGE HOTEL, REEFTON.
First-class Accommodation. Wines and Spirits of the best brands only kept in stock.
MRS. BESSIE RESEIGH, Proprietress.

RUSSELL.



DUKE OF MARLBOROUGH HOTEL, RUSSELL, BAY OF ISLANDS.
(The First Licensed House in New Zealand.)
First-class Accommodation. Attention and Civility, as well as a Good Table, guaranteed, with "some" Fish of the choicest almost every day. Give the House a Call and see for yourselves. Boats for Hire. Billiards, etc. Charges Reasonable. Nothing but the Best of Beers and Liquors kept in Stock.
DAVID FORSYTH Proprietor.

STRATFORD.



THE STRATFORD HOTEL, STRATFORD.
F. RHODES Proprietor.
The Best-appointed Hotel in the District
Five Commodious Sample Rooms.
Wines and Spirits only best procurable.
Speight's XXX Dunedin Beer always on draught. Telegrams promptly attended to. Competent Chef in charge of Cuisine.
Telephone No. 31. P.O. Box No. 31.

We Print

Ledger or Account Books
Memorandums
Invoices Cards
Prize Tickets for Shows
Concert Programmes
&c. &c.

Arthur Cleave & Co., LIMITED.

Vulcan Lane Auckland.

TAURANGA.

TAURANGA HOTEL, STRAND, TAURANGA.
Under New Management.
T. R. NIXON,
(Late of Carpenters' Arms, Auckland.)
Desires to intimate that he has taken over the above popular House, where as will be pleased to meet old and new patrons. Extensive Alterations and Improvements have been effected, and visitors will find every comfort and convenience. Tariff moderate. Wines and Spirits of Best Brands only. Night Porter in attendance.

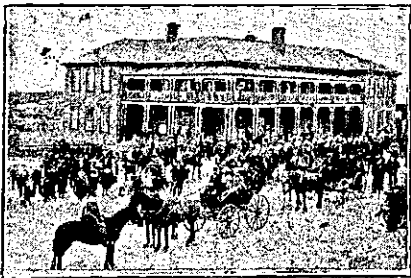
TAIHAPE.



ERN'S HOTEL, TAIHAPE.
E. A. WAKEMAN Proprietor.
This well-appointed Hotel offers First-class Accommodation for Tourists and Travellers. Only the Best Brands of Liquors Stocked. Good Table and Attendance. Passengers by early Trains can be called and obtain Breakfast. Night Porter kept. Tariff, 8s per day. Travellers using Taihape as Stopover on journey Northward pass through the Finest Scenery on the Main Trunk Line in daylight.

THE GRETNA HOTEL, TAIHAPE.
MRS. F. H. GIBBONS Proprietress.
This well-known Hostelry has All the Comforts of a Home and conveniences of a first-class Hotel. The premises are furnished with a view to the comfort of the public. Tariff, 8s per day. Good Sample Room. Best Brands only. Passengers called for early trains.

TE AROHA.



PALACE HOTEL, THE PREMIER HOTEL OF TE AROHA.
B. GOLDWATER Owner.
Offers Special Accommodation for Tourists, Families and Visitors.
Commercial Sample Room. Telegrams Promptly Attended to.
Spacious Bedrooms, Private Parlours.
Hot, Cold, and Shower Baths.
TARIFF: From 7s Per Day.
THE SPORTING HOTEL OF THE DISTRICT

TE AWAMUTU.

COMMERCIAL HOTEL, TE AWAMUTU.
W. G. ABBOTT Proprietor.
(Late of Ohaupo.)
EVERY MODERN CONVENIENCE.
BATH ROOMS, BILLIARD ROOM,
FIRST-CLASS SAMPLE ROOMS.

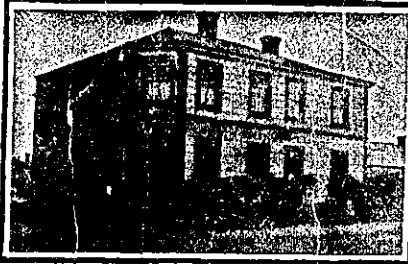
TE AWAMUTU HOTEL, TE AWAMUTU.
JAMES JACKSON .. Proprietor.
First-class Accommodation; Moderate Tariff. Only Best Brands Ale, Wines, A Free House, Dunedin Beer on Draught.

TE KUITI.



RAILWAY TEMPERANCE HOTEL, TE KUITI.
F. H. SIMS Proprietor.
Owing to the great increase of business, F.H.S. has been compelled to erect 12 additional rooms, including Large Commercial Room. Every Comfort and Attention. Travellers by the Early Train specially catered for.
Next to Post and Telegraph Office. Telegrams: "Sims." Te Kuiti.

TIMARU.



HIBERNIAN HOTEL, TIMARU (Latter-street). Telephone No. 275.
— O'DONNELL, Proprietor. Mr. O'Donnell will be pleased to meet his numerous friends at the above favourite hostelry, and will do his best to make all comfortable, so that the reputation of the house in this respect may be well maintained. Everything in liquors and cordials of the best brands obtainable. Charges moderate.

MELVILLE HOTEL, TIMARU.
J. REILLY Proprietor.
(Late of Wallingford Hotel, Temuka.)
The Proprietor will be pleased to see Old and New Friends at the Melville.
BEST WINES AND SPIRITS ONLY.

CLUB HOTEL, TIMARU.
Close to Railway Station, and offering Excellent Accommodation to Travellers.
Liberal Cuisine. Hot and Cold Baths. Best Brands of Liquors Stocked.
Moderate Tariff.
E. WARD Proprietor.



TIMARU HOTEL, STAFFORD ST., TIMARU.
A. P. GAWNE Proprietor.
This popular Hotel, which is in the principal street of Timaru, has recently undergone a thorough renovation inside and out, and is now looked upon as the cleanest and most comfortable house in the district. There is a large Dining-room (first-class table kept), and Sitting and Commercial Rooms adjoining. Choicest brands of Wines and Spirits, and Hotel's Ales on Tap. A trial will convince one. Tariff: 4s 6d per day or 25s per week.



THE ROYAL HOTEL, TIMARU.
FIRST-CLASS ACCOMMODATION.
Timaru and Speight's Ales Always on Tap.
WM. QUIRK Proprietor.



THE CROWN HOTEL, TIMARU.
First-class House. All Renovated throughout this year. First-class accommodation. Hole and Co. and Speight's Ales always on tap. Terms Reasonable.
W. CONNELLY Proprietor.

OUR OFFER TO "N.Z. SPORTING AND DRAMATIC REVIEW" READERS.

We are in touch with and can send you, on receipt of stamped and addressed envelope, the names of leading BRITISH MANUFACTURERS AND SUPPLIERS OF GOODS FOR EXPORT TO THE DOMINION OF NEW ZEALAND.
We would be glad to give information to any New Zealanders looking for Agencies.
Address letters to The Editor, "N.Z. Sporting and Dramatic Review," Vulcan Lane,

WAITARA.

CLUB HOTEL, WAITARA.
THE COMMERCIAL HOUSE.

FIRST-CLASS ACCOMMODATION for the Travelling Public at a Moderate Tariff.

The above Hotel has lately been rebuilt and is replete with every convenience. Only the Best Ales, Wines and Spirits kept.

Sample Room for Travellers.

A. T. LAKE Proprietor

WAVERLEY.

COMMERCIAL HOTEL, WAVERLEY.

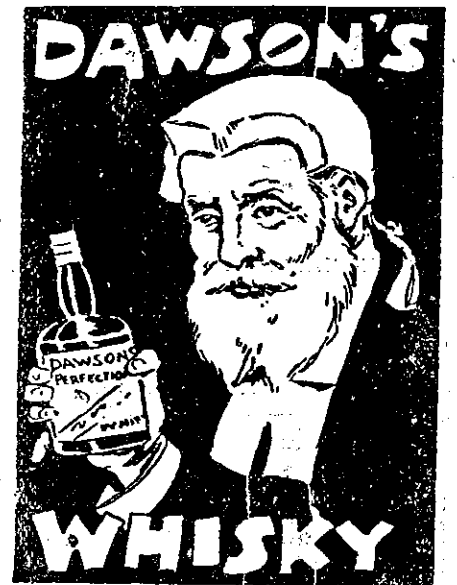
The Recognised House for Commercial and Tourists.

PATRONS WILL RECEIVE ALL HOME COMFORTS.

Letters and Telegrams promptly attended to.

SPEIGHT'S DUNEDIN BEER ON TAP.

JAMES SMITH, PROPRIETOR.
(Late Manager Piteathly and Co., Wellington.)



PEARSON & Co., Ltd., Sole Agents for Wellington district.

How is Business?

Folks are talking of "dull times." We do not find times dull.

Good Printing

is essential to success. It arrests attention, creates an interest, and helps business. We have exceptional facilities for the production of

High-Grade PRINTING

Those business men who are anxious to avail themselves of stylish and attractive printing should communicate with us.

ARTHUR CLEAVE & CO. Limited.
Vulcan Lane, Auckland.

"THE NEW ZEALAND MOTOR AND CYCLE JOURNAL"
is the only paper published in the Dominion exclusively devoted to Motor and Cycling.
Published Monthly.
PRICE—THREEPENCE.
ARTHUR CLEAVE & CO., LTD.
Vulcan Lane, AUCKLAND.