

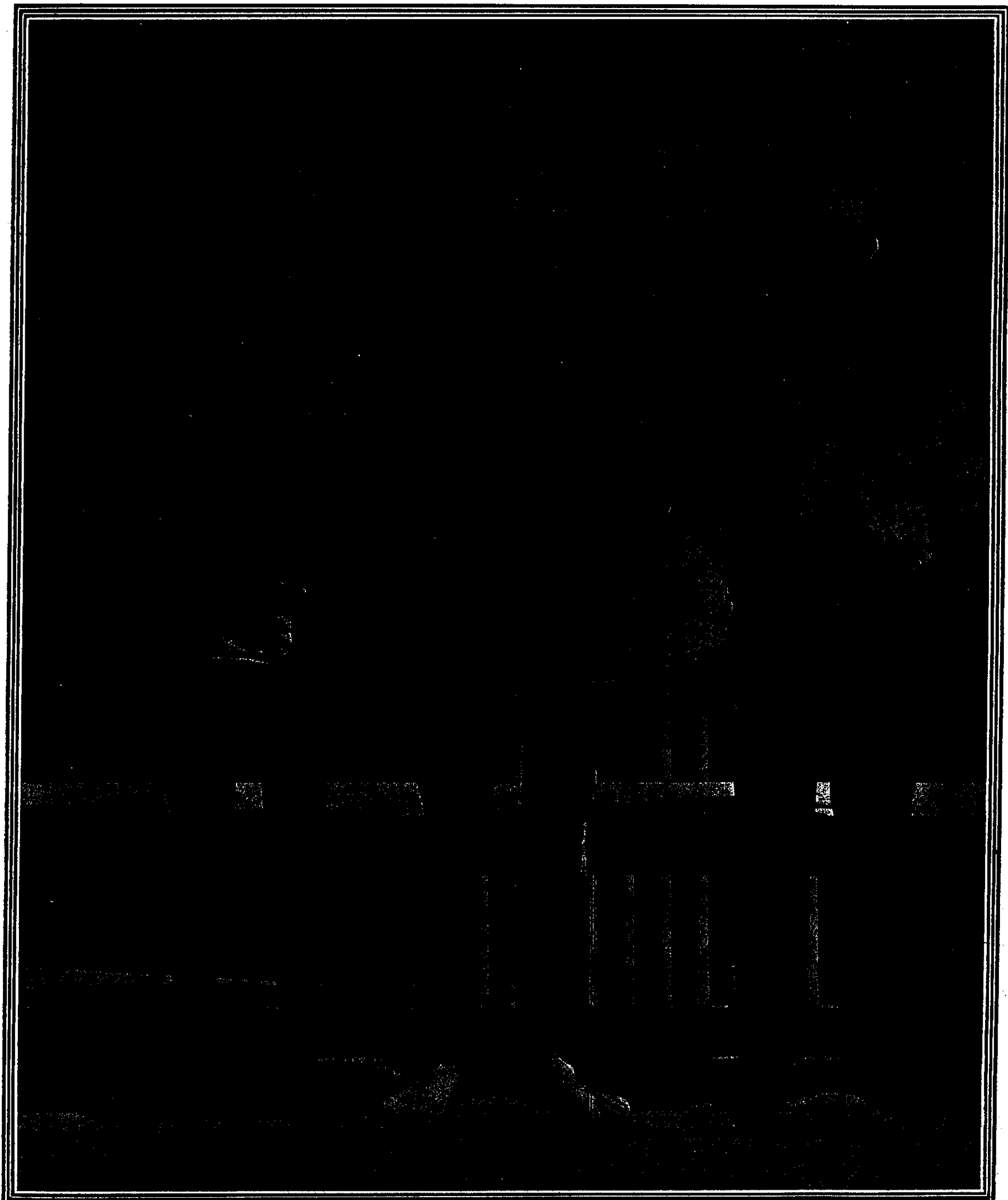
NEW ZEALAND ILLUSTRATED

Sporting & Dramatic Review

VOL. XIX.—No. 1083.

AUCKLAND, WELLINGTON, AND CHRISTCHURCH, DECEMBER 8, 1910.

PRICE—THREEPENCE.



HARRY PEARCE (IN CENTRE), CHAMPION SCULLER OF AUSTRALIA, WHO HAS ARRIVED IN WANGANUI, AND IS TRAINING FOR HIS MATCH WITH W. WEBB, EX-CHAMPION OF THE WORLD, WHICH TAKES PLACE ON THE WANGANUI RIVER ON BOXING DAY FOR £200 ASIDE. ON THE RIGHT IS W. FOGWELL, TRAINER AND PACER, WHILE ON HIS LEFT IS C. LYONS, A FRIEND OF PEARCE'S.