

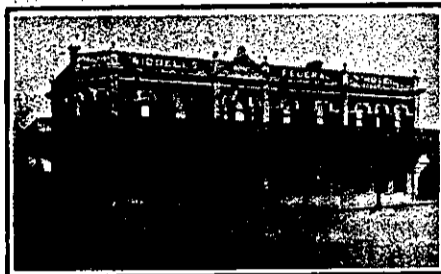
NEW ZEALAND HOTEL DIRECTORY—(CONTINUED). — PATRONISED BY HORSEMEN, CYCLISTS, MOTORISTS, SPORTSMEN, COMMERCIAL TRAVELLERS, AND THE THEATRICAL PROFESSION.

WANGANUI.

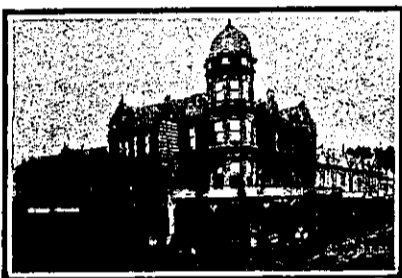


Established 1857.  
Tel. No. 46. P.O. Box No. 54.  
FITTED THROUGHOUT  
WITH ELECTRIC LIGHTS.  
**FOSTER'S HOTEL,**  
Nearly opposite Town Bridge,  
TAUPO QUAY, WANGANUI.  
J. R. FOSTER, Proprietor.  
Within Three Minutes of  
Railway Station and River  
Tourist Steamers.

**FEDERAL HOTEL,**  
TAUPO QUAY, WANGANUI.  
(Opposite Up-river Steamer Wharves).



Modern, Brick, Fire-proof, Two-storeyed  
Building. Cosily furnished with all  
Home Comforts. First-class Table and  
Moderate Tariff.  
The Best Brands of Ales, Stout and  
Spirits always procurable.  
**NEW FEDERAL HOTEL, WANGANUI.**  
Overlooking Motua Gardens and Beauti-  
ful View of the River.  
Under New Management.  
W. BELLVE ..... Proprietor.

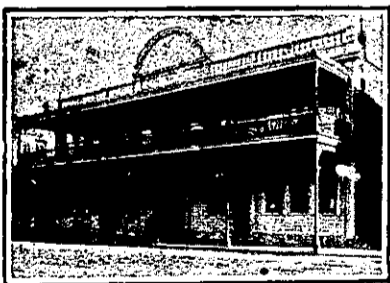


**RUTLAND HOTEL, WANGANUI.**  
THOS. LAWLESS ..... Proprietor.  
THE HOME OF THE TOURIST.

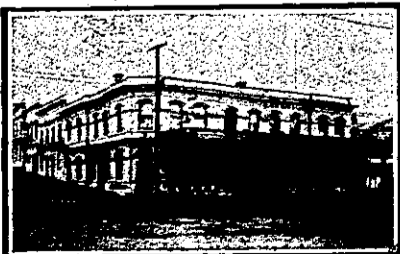
The above Hotel has just been rebuilt  
and newly furnished throughout in an  
up-to-date style. The reading, writ-  
ing and smoke rooms are replete with  
every convenience. The greatest care  
is taken to maintain a reputation for  
home comfort. Dark room for photo-  
graphers.



**PROVINCIAL HOTEL, WANGANUI.**  
FIRST-CLASS ACCOMMODATION  
FOR THE TRAVELLING PUBLIC.  
ONLY THE BEST OF ALES, WINES,  
AND SPIRITS KEPT IN STOCK.  
W. TUCK ..... Proprietor.



**MCCARTHY'S HOTEL,**  
WANGANUI.  
IMMEDIATELY OPPOSITE RAILWAY  
STATION AND WHARVES.  
C. J. MCCARTHY - - Proprietor.  
P.O. Box 126. Telephone 147.



**CHAVANNES HOTEL, WANGANUI.**  
THE COMFORTABLE.  
A HOMELY HOME FOR VISITORS TO  
WANGANUI.  
Every Home Comfort. Excellent  
Cuisine. Commodious SAMPLE ROOMS.  
J. G. SWAN ..... Proprietor.  
Telephone 20. P.O. Box 21.

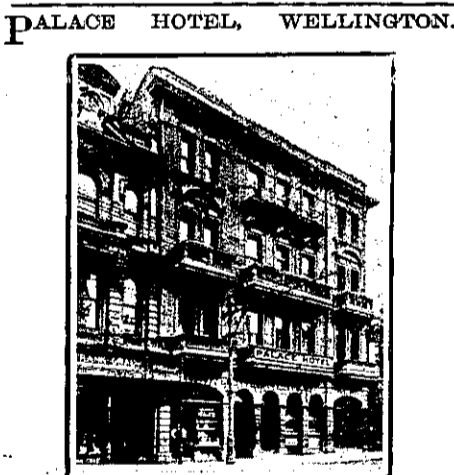
WELLINGTON.—Continued.

WHEN VISITING  
WELLINGTON,  
STAY AT  
THE  
**ALBERT HOTEL**  
Which has recently been  
re-furnished from cellar  
to ceiling, and possesses  
every modern convenience.  
Letters and telegrams  
will receive prompt attention.

**VISITORS & TOURISTS**  
May rely upon having  
**EXCELLENT  
ACCOMMODATION**  
And finding  
everything  
First-class  
at the  
**BELLEVUE GARDENS & HOTEL**  
—AT—  
**LOWER  
HUTT.**  
Half-hour Drive from  
Treadham and One Hour  
from Wellington.  
Tariff, £2 2s. per Week.  
E. J. ANSTIS - Proprietor.

**MASONIC HOTEL,**  
CUBA STREET,  
WELLINGTON.  
FREDK. DOBSON, PROPRIETOR.  
TARIFF MODERATE.  
DAY AND NIGHT PORTER KEPT.  
CALL AND SEE FRED.  
He will be Deighted to see you.

**THE EMPIRE HOTEL,**  
(LIMITED).  
THE LEADING & MOST CENTRAL  
HOTEL IN WELLINGTON.



**PALACE HOTEL, WELLINGTON.**  
UNDER ENTIRELY NEW  
SUPERVISION.  
New Stock, New Furnishings, New and  
Experienced Staff. This favourite House  
is now open to receive Boarders on the  
most favourable terms. Best Brands  
only of Wines, Spirits and Beers.  
J. SWINDALE  
(Eighteen Years New Zealand Railways).  
Proprietor.  
Tel. 863. Telegrams: Palace, Wellington.

**NEW PROVINCIAL HOTEL,**  
UPPER HUTT.  
Containing over Fifty Rooms.  
REPLETE WITH EVERY MODERN  
CONVENIENCE.  
FIRST-CLASS ACCOMMODATION FOR  
TOURISTS, TRAVELLERS, ETC.  
Trout-fishing Streams within short dis-  
tance of Hotel.  
Twenty-two Loose Boxes. Good Trout-  
fishing, Shooting and Scenery. Motor  
Parties well catered for. Benzine kept in  
stock.  
MRS. ARTHUR PAULSEN.  
Proprietress.

"THE NEW ZEALAND MOTOR AND  
CYCLE JOURNAL" is the only  
paper published in the Dominion ex-  
clusively devoted to Motoring and Cycling  
pursuits. Published monthly. Price  
Threepence.—Arthur Cleave & Co., Ltd.,  
Vulcan Lane, Auckland.

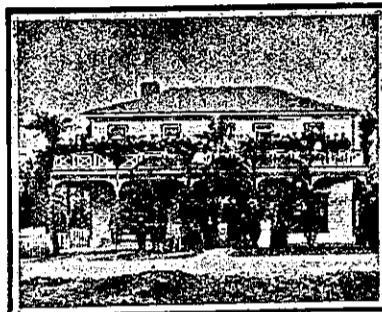
Printed and Published by Arthur Cleave, of Ellerslie, at his Registered Printing  
Office, Vulcan Lane, Auckland, for the Proprietor, Arthur Cleave and Co.,  
Ltd., THURSDAY, NOVEMBER 10, 1910.

WHANGAREA.



**MASONIC HOTEL, WHANGAREA.**  
C. GOTHARD ..... Proprietor.  
Wines and Spirits of the Best Brands.  
First-class Accommodation for Visi-  
tors, Tourists, and Commercial Tra-  
vellers.  
Plunge and Shower Baths.  
Paddocking. Horses for Hire. Oil  
Launch, Billiards.  
A magnificent place for a Holiday.  
Tariff: 6s Per Day.

WHANGAMOMONA.



**WHANGAMOMONA HOTEL,**  
WHANGAMOMONA.  
WM. ABBOTT, Proprietor. Every-  
thing up to date. First-class Accom-  
modation for Travellers and the General  
Public. Only Best Brands of Wines  
and Spirits kept in Stock.

WHANGAREI.



**WHANGAREI HOTEL,**  
WHANGAREI.  
This fine House, just re-built in brick  
and furnished in up-to-date style, now  
offers unrivalled accommodation to the  
Travelling Public.  
Sample Room. Hot and Cold Baths.  
Two minutes' walk from Saltwater  
Bathing Place.  
Stabling Second to None.  
Best Wines, Ales and Spirits Kept in  
Stock.  
SAMUEL McMAHON ..... Proprietor.

WOODVILLE.



**CLUB HOTEL,**  
WOODVILLE.  
P. DWYER ..... Proprietor  
(Late of Wellington and Dunedin).  
The recognised house in the district  
for Commercial Travellers. Sample  
room attached to the hotel. Tourists  
visiting Woodville will find excellent ac-  
commodation at the above hotel. Good  
Fishing and shooting in and around the  
district.  
TELEPHONE No. 1. P.O. BOX 53  
LETTERS AND TELEGRAMS  
PROMPTLY ATTENDED TO.  
CABS LEAVE HOTEL TO MEET ALL  
TRAINS.

**CENTRAL HOTEL,**  
WOODVILLE.  
H. STACE ..... Proprietor.  
FIRST-CLASS ACCOMMODATION.  
BEST QUALITY OF WINES AND  
SPIRITS.

**LAING'S MASONIC HOTEL,**  
WOODVILLE.  
Excellent Accommodation for the  
Travelling Public at a Moderate Tariff.  
Best Wines, Spirits, Ales, etc. Good  
Billiard Table.  
Ample Stabling and Paddocking.  
ANDREW LAING (Late of Foxton)  
Proprietor.

WELLINGTON.

**COLUMBIA PRIVATE HOTEL,**  
LOWER CUBA ST., WELLINGTON.  
New and up-to-  
Date, with every  
convenience.  
Night and Day  
Porter. Electric  
Elevator. Magni-  
ficent Garden Roof  
commanding view  
of City and Har-  
bour. Unrivalled  
for position, situ-  
ated close places  
amusement, rail-  
way station, and  
wharves. Trams  
pass the door.  
Trains and boats  
met. Tariff, 6s. per  
day; 30s. weekly.  
Permanent Board-  
ers from 25s.  
LUNCHEON—12 to 2.  
T. P. LYONS ..... Proprietor.  
Telephone 1126.



**FAMILY HOTEL, LOWER HUTT.**  
JOHN YOUNG .. Proprietor.

This Hotel offers Accommodation sec-  
ond to none in the district. Central po-  
sition and close to the Post Office.  
Billiards, Excellent Table, and Best  
Brands of Wines and Spirits. Only  
Speight's Beer drawn.  
Good Stabling and Commodious Loose  
Boxes.

**CENTRAL BREWERY,**  
QUIN STREET, WELLINGTON.

BOTTLED ALE AND STOUT, specially  
Brewed for Home Use from Malt and  
Hops. Quarts, 7s; Pints, 4s; Kegs, 2s per  
gallon. Absolutely pure, and recom-  
mended by the medical fraternity. Orders  
promptly attended to. A trial solicited.  
Stent and Co. Phone 571.  
T. B. DARRELL .. Proprietor.

**PRINCESS THEATRE HOTEL,**  
TORY-STREET, WELLINGTON.  
UNDER ENTIRELY NEW  
MANAGEMENT.

This Hotel offers good Accommoda-  
tion to Country Visitors at a Moderate  
Tariff.  
New Stock of Liquors. A Single  
Bottle at wholesale price.

ROBERT W. V. ALLEN,  
Proprietor.  
Tel. 1635.

**WE PRINT**

- LEDGER OR ACCOUNT BOOKS
- MEMORANDUMS
- INVOICES CARDS
- PRIZE TICKETS FOR SHOWS,
- CONCERT PROGRAMMES,
- CATALOGUES,
- Etc., Etc.

**ARTHUR CLEAVE & CO.,**  
LIMITED,  
VULCAN LANE, AUCKLAND.