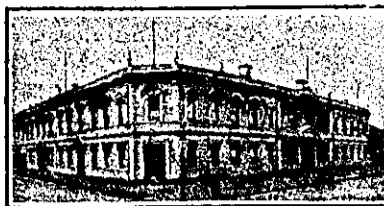


NEW ZEALAND HOTEL DIRECTORY—(CONTINUED). — PATRONISED BY ROSSMEN, CYCLISTS, MOTORISTS, SPORTSMEN, COMMERCIAL TRAVELLERS AND THE THEATRICAL PROFESSION.

CHRISTCHURCH.—Continued.



WHERE TO STAY IN CHRISTCHURCH.

STOREY'S HOTEL.

Right Opposite Railway Station.

Convenient to all parts of City and Suburbs.

Electric Cars start from the door.

Proprietor .. WILLIAM JAMES (Late of "Somerset Hotel," Ashburton).



STAR AND GARTER HOTEL. Christchurch, Corner Barbadoes-street and Oxford Terrace. PAUL B. FLOOD, Proprietor. Everything First-class, and Ales, Wines, and Spirits are of the Highest Order.

DARGAVILLE.



NORTHERN WAIROA HOTEL, DARGAVILLE.

EVERY POSSIBLE CONVENIENCE FOR THE TRAVELLING PUBLIC.

The BILLIARD ROOM is fitted with one of Alcock's Best Tables.

Good Stables and Paddock adjoining the Premises.

F. C. BASS ..... Proprietor.

UNDER THE PATRONAGE OF HIS EXCELLENCY THE GOVERNOR.

NOTICE TO THE GENERAL PUBLIC.

THE CENTRAL HOTEL, DARGAVILLE.

(Close to Wharf and Railway Station).

Is now under the Management of MR. H. H. DYER,

And the Travelling Public will find it one of the most Convenient Houses in the District.

ALL ACCOMMODATION.

BEST BRANDS OF WINES AND SPIRITS.

Telegrams Promptly Attended to.

DRURY.



RAILWAY HOTEL, DRURY.

This Hotel is within easy distance from town, being only 22 miles by rail direct. There is splendid Shooting in the district.

First-class Table. Moderate Tariff. Special arrangements for week-end Parties.

MRS. H. DINGLE .. Proprietress.

DUNEDIN.

GLADSTONE HOTEL, MACLAGGAN-STREET, DUNEDIN.

JOHN COLLINS .... Proprietor (Late of Al Hotel, Pelichet Bay).

The most Centrally-situated Hotel in the City. First-class Accommodation for Tourists, Travellers, and Boarders.

Suites of Rooms for Families. Charges Moderate. A Special Feature: is Lunch from 12 to 2 o'clock. Hot, Cold and Shower Baths. The Very Best of Wines, Ales, and Spirits supplied.

ELTHAM.

CENTRAL HOTEL, BRIDGE AND HIGH STREETS, ELTHAM.

FIRST-CLASS ACCOMMODATION FOR THE TRAVELLING PUBLIC.

MOORE BROS. .... Proprietors.

FEATHERSTON.

EMPIRE HOTEL, FEATHERSTON.

The EMPIRE is the appointed Hotel to the Wellington Commercial Travellers' Association and N.Z. Cyclists' Touring Club.

JOHN H. TULLY .... Proprietor.

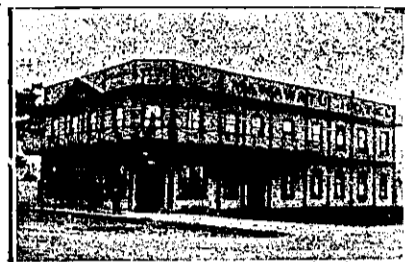
FEILDING.

CHELLENHAM HOTEL, NEAR FEILDING.

Having taken over the above Hotel, I wish to notify the Residents of the District that I have stocked it with the best Liquors, etc., and customers can rely upon getting the brand they ask for.

R. W. BEADNALL.

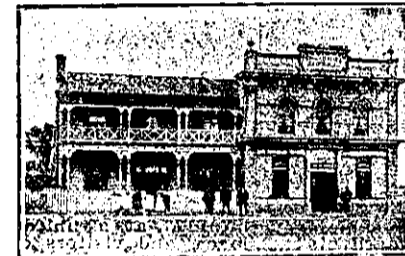
FOXTON.



MANAWATU HOTEL, FOXTON.

FRED HADFIELD - - - Proprietor.

Visitors will find every Comfort and Convenience at this well-known house. ONLY THE BEST BRANDS OF WINES, SPIRITS, AND ALES STOCKED.



POST OFFICE HOTEL, FOXTON.

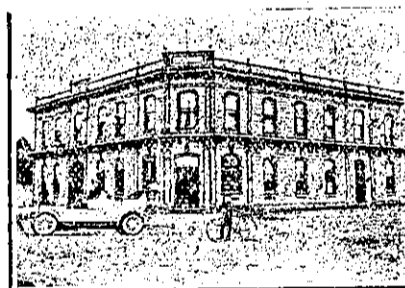
BEST OF WINES AND SPIRITS.

ONLY SPEIGHT'S BEER.

Coaches leave Hotel for Shannon and Levin twice daily.

FIRST-CLASS ACCOMMODATION FOR TRAVELLERS.

W. F. GRAY .. Proprietor.

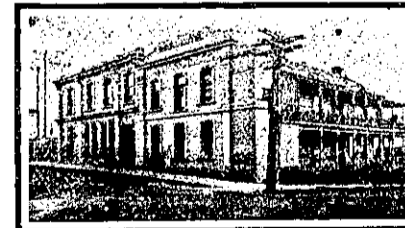


WHYTE'S HOTEL, FOXTON.

The recognised house for Commercial Travellers. This Hotel offers superior accommodation to Travellers, and is a first-class family house in every respect. Letters and telegrams promptly attended to. Only the best of Ales, Wines and Spirits stocked.

W. J. WHITE .... Proprietor.

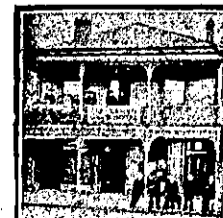
GREYMOUTh.



GILMER HOTEL, GRESSON-STREET, GREYMOUTh (Opposite the Wharf).

CHAS. BURRELL ... Proprietor (Late of Kaitangata).

The Gilmmer Hotel is a newly-built, up-to-date Brick Hotel, with every modern convenience. Boarders can rely upon every attention, and the household duties are under the personal supervision of Mrs. Burrell. Speight's Beer on tap, and the wines are the best procurable. Good Table, charges moderate. A Trial Solicited.



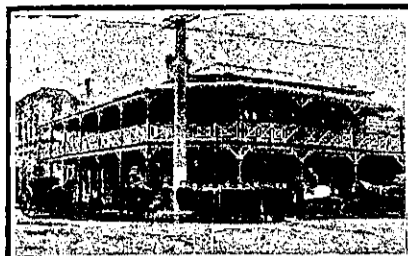
CLUB HOTEL, MAWHERA QUAY, GREYMOUTh.

Right opposite excellent landing. Excellent Accommodation for the Travelling Public.

Only the Best Brands of Ales, Wines and Spirits kept. Hot and Cold Baths. Tariff, 6s per day.

ALEX. LENNIE .. Proprietor.

GREYMOUTh.—Continued.



THE EMPIRE HOTEL, GREYMOUTh.

Centrally situated between Railway Station, G.P.O., Municipal Buildings and Wharf. The Empire Hotel has recently been renovated and re-furnished, and now offers the travelling public the most Comfortable Accommodation and a Good Table at moderate rates. The Empire being a "free house," patrons can rely upon getting the very best brands of Wines and Spirits and Draught and Bottled Ales.—JAMES P. BEIRNE, Proprietor.



ROYAL HOTEL, GREYMOUTh.

First House from Greymouth Railway Station, and next new Government Buildings.

JAMES S. VIAL .... Proprietor.

Telegrams and Letters promptly answered. Telephone 51. P.O. Box 39.

Tariff, 6s per day. Meals second to none in the Dominion. Speight and Co's Ales on Tap.

HAWERA.

CENTRAL HOTEL.

THE WELL-KNOWN HOUSE IN HAWERA FOR TRAVELLERS AND TOURISTS.

EVERYTHING OF THE BEST.

B. HARRINGTON, Proprietor.

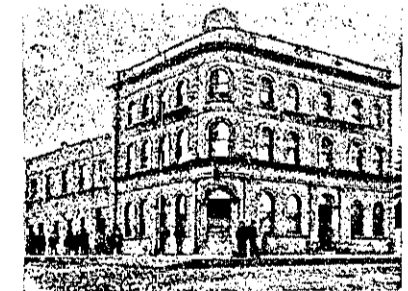


SHAMROCK HOTEL, HAWERA.

JAS. BIGGINS ..... Proprietor. (Late of Tarataki Hotel).

First-class Accommodation. Best of Liquors. Moderate Tariff.

HAMILTON.



WAIKATO HOTEL, HAMILTON EAST.

The travelling public will find every modern comfort and convenience at this well-known and popular Hotel. Coaches meet all trains.

J. W. H. BRIGHT (Late of Hamilton Hotel). Proprietor.



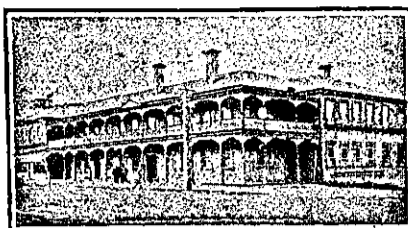
COMMERCIAL HOTEL, HAMILTON.

DAVID NORDEN ..... Proprietor

The Travelling Public specially Catered for.

TERMS MODERATE. Telephone No. 12.

HAMILTON.—Continued.



HAMILTON HOTEL, HAMILTON.

J. B. HOOPER ..... Proprietor

This Commodious and Up-to-date Hotel is replete with every modern convenience for the Comfort of Visitors.

The Cuisine is first-class. Tariff Moderate.

ONLY THE BEST OF LIQUORS KEPT ON STOCK.



ROYAL HOTEL, HAMILTON EAST.

Good Accommodation.

Best Brands of Wines and Spirits.

Good Stabling. Moderate Tariff.

JOHN T. COUGHLAN, ..... Proprietor (Late of Masonic Hotel, Wanganui.)

KAWAKAWA.



JUNCTION HOTEL, KAWAKAWA.

T. SHEEN ..... Proprietor.

Mr. Sheen will be pleased to meet his numerous friends at the above well-known favourite and spacious Hostelry, and hopes by strict attention and civility to customers to merit a continuance of the liberal support accorded to the House in the past. Wines, Spirits and Beers of the First Quality. Billiards, Buggies, etc. Sample Rooms. The Best Accommodation. A Good Table kept. Charges Moderate.

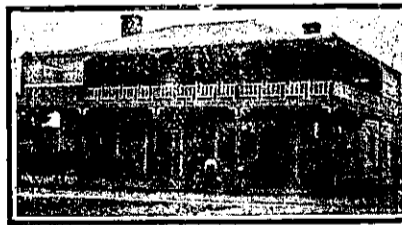
HOKITIKA.

KELLER'S HOTEL, HOKITIKA.

Patronised by the Leading Commercial men on the West Coast. Only the best brands, etc., supplied.

W. KELLER ..... Proprietor.

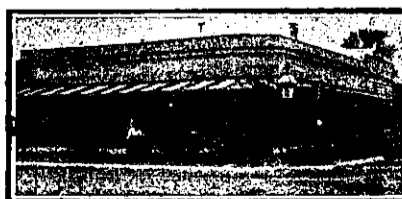
Under Vice-regal Patronage.



RAILWAY HOTEL, HOKITIKA.—

First house from Railway Station. Good accommodation for the travelling public at moderate rates. The Railway Hotel is the most convenient for travellers of all classes, being practically at the station gates. The accommodation is good, and every comfort of guests is studied. Everything of the best is served and guaranteed.

HENRY JONES .. Proprietor.



MARQUIS OF LORNE HOTEL, HOKITIKA.—

Three minutes' walk from Railway Station. MRS. M. BERNSTROM, Proprietress. Most comfortable accommodation for travelling public at a moderate tariff. Motto: "Cleanliness and Comfort." Best of Wines, Spirits and Ales only stocked.

HUNTLY.

HUNTLY HOTEL, HUNTLY.

L. B. HARRIS .... Proprietor.

This Hotel is now one of the largest in the Waikato. All trains stop at Huntly, and the Hotel is a few yards from the Station. First-class Accommodation and Excellent Table.