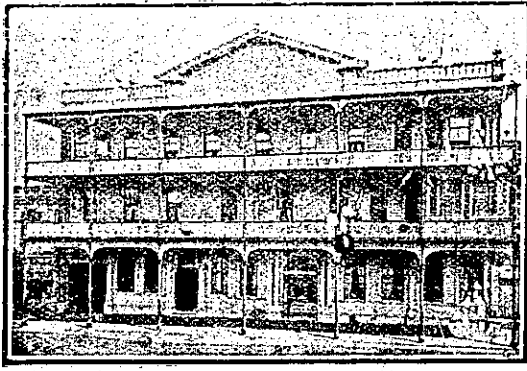


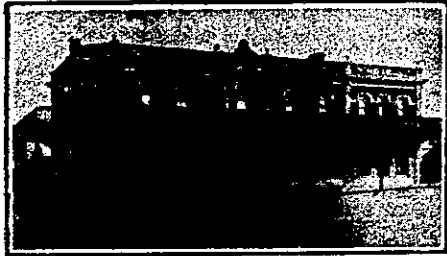
NEW ZEALAND HOTEL DIRECTORY—(CONTINUED). — PATRONISED BY HORSEMEN, CYCLISTS, MOTORISTS, SPORTSMEN, COMMERCIAL TRAVELLERS, AND THE THEATRICAL PROFESSION.

WANGANUI.

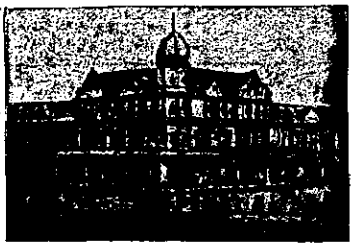


Established 1857.
Tel. No. 46. P.O. Box No. 54.
FITTED THROUGHOUT
WITH ELECTRIC LIGHT
FOSTER'S HOTEL,
Nearly opposite Town Bridge,
TAUPO QUAY, WANGANUI.
J. R. FOSTER, Proprietor.
Within Three Minutes of
Railway Station and River
Tourist Steamers.

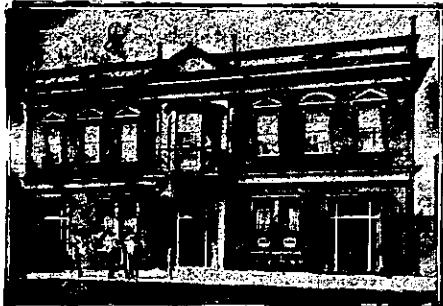
FEDERAL HOTEL,
TAUPO QUAY, WANGANUI.
(Opposite Up-river Steamer Wharves).



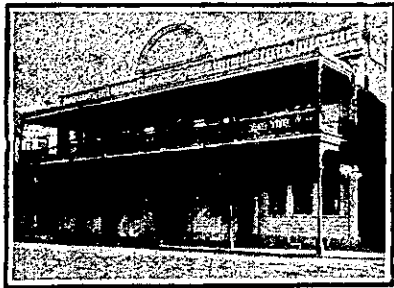
Modern, Brick, Fire-proof, Two-storeyed
building. Cosily furnished with all
home comforts. First-class Table and
Moderate Tariff.
The Best Brands of Ales, Stout and
Spirits always procurable.
NEW FEDERAL HOTEL, WANGANUI.
Overlooking Motua Gardens and Beautiful
View of the River.
Under New Management.
W. BELLVE Proprietor.



RUTLAND HOTEL, WANGANUI.
F. C. FABER Proprietor.
THE HOME OF THE TOURIST.
The above Hotel has just been rebuilt
and newly furnished throughout in an
up-to-date style. The reading, writing
and smoke rooms are replete with
every convenience. The greatest care
is taken to maintain a reputation for
home comfort. Dark room for photo-
graphers.



PROVINCIAL HOTEL, WANGANUI.
FIRST-CLASS ACCOMMODATION
FOR THE TRAVELLING PUBLIC.
ONLY THE BEST OF ALES, WINES,
AND SPIRITS KEPT IN STOCK.
W. TUCK Proprietor.



MCCARTHY'S HOTEL,
WANGANUI.
IMMEDIATELY OPPOSITE RAILWAY
STATION AND WHARVES.
G. J. MCCARTHY - - Proprietor.
P.O. Box 125. Telephone 147.

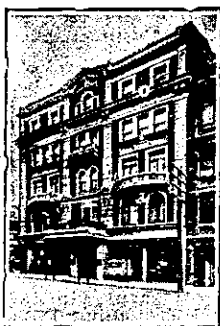
WELLINGTON.

THE EMPIRE HOTEL,
(LIMITED).

**THE LEADING & MOST CENTRAL
HOTEL IN WELLINGTON.**

WELLINGTON.—Continued.

COLUMBIA PRIVATE HOTEL,
LOWER CUBA ST., WELLINGTON.



New and up-to-
date, with every
convenience.
Night and Day
Porter. Electric
Elevator. Magni-
ficent Garden Roof
commanding view
of City and Har-
bour. Unrivalled
for position, situ-
ated close places
amusement, rail-
way station, and
wharves. Trams
pass the door.
Trains and boats
met. Tariff, 6s. per
day; 30s. weekly.
Permanent Board-
ers from 25s.

LUNCHEON—12 to 2.
T. P. LYONS Proprietor.
Telephone 1136.

FAMILY HOTEL, LOWER HUTT.

JOHN YOUNG .. Proprietor.
This Hotel offers Accommodation sec-
ond to none in the district. Central
position and close to the Post Office.
Billiards, Excellent Table, and Best
Brands of Wines and Spirits. Only
Speight's Beer drawn.
Good Stabling and Commodious Loose
Boxes.

CENTRAL BREWERY,
QUIN STREET, WELLINGTON.

BOTTLED ALE AND STOUT, specially
Brewed for Home Use from Malt and
Hops. Quarts, 7s; Pints, 4s; Kegs, 2s per
gallon. Absolutely pure, and recom-
mended by the medical fraternity. Orders
promptly attended to. A trial solicited.
Stent and Co. Phone 571.
T. B. DARRELL .. Proprietor.

PRINCESS THEATRE HOTEL,
TORY-STREET, WELLINGTON.

UNDER ENTIRELY NEW
MANAGEMENT.
This Hotel offers good Accommoda-
tion to Country Visitors at a Moderate
Tariff.
New Stock of Liquors. A Single
Bottle at wholesale price.
ROBERT W. V. ALLEN,
Proprietor.
Tel. 1635.

HOTEL ARCADIA,
WELLINGTON.

The Travelling Public are reminded
that every attention is directed to-
wards their convenience and comfort
at this well-known Private Hotel.
Taxi-cabs on hire for day or night
service at moderate charges.
Telephone 2349.
MRS. B. A. PINNOCK
(Late of Trocadero),
Proprietress.

SHOW CATALOGUES, Trade Price
Lists, Receipt Books, Billheads,
Order Forms, Handbills, Invoices, Cir-
culars, Large and Small Posters and
Playbills, etc., etc.—ARTHUR CLEAVE
AND CO., LTD., Vulcan Lane.

WELLINGTON.—Continued.

WHEN VISITING
WELLINGTON,
STAY AT
THE

ALBERT HOTEL
Which has recently been
Re-furnished from cellar
to ceiling, and possesses
every modern convenience.
Letters and telegrams
will receive prompt attention.
T. G. ASHMAN, Proprietor.

VISITORS & TOURISTS
May rely upon having
**EXCELLENT
ACCOMMODATION**
And finding
everything
First-class
at the
**—AT—
LOWER
HUTT.**
Half-hour Drive from
Trentham and One Hour
from Wellington.
Tariff, £2 2s. per Week.
E. J. ANSTIS - Proprietor.

MASONIC HOTEL,
CUBA STREET,
WELLINGTON.

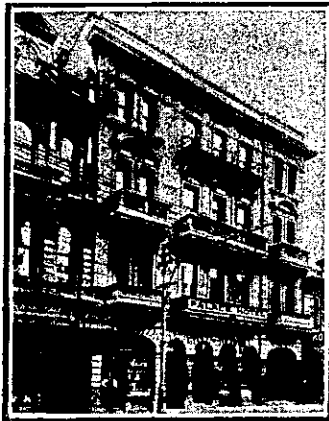
FREDK. DOBSON, PROPRIETOR.
TARIFF MODERATE.
DAY AND NIGHT PORTER KEPT.
CALL AND SEE FRED.
He will be delighted to see you.

CENTRAL HOTEL,
WELLINGTON.

ALBERT (Bert) MACE .. Proprietor.
(Late of U.S.S. Coy).
ONLY BEST BRANDS OF WINES AND
SPIRITS IN STOCK.

DON'T FORGET TO LOOK UP "BERT"
WHEN VISITING WELLINGTON.

PALACE HOTEL, WELLINGTON.



UNDER ENTIRELY NEW
SUPERVISION.
New Stock, New Furnishings, New and
Experienced Staff. This favourite House
is now open to receive Boarders on the
most favourable terms. Best Brands
only of Wines, Spirits and Beers.
J. SWINDALE
(Eighteen Years New Zealand Railways),
Proprietor.
Tel. 863. Telegrams: Palace, Wellington.

NEW PROVINCIAL HOTEL,
UPPER HUTT.

Containing over Fifty Rooms.
REFLETE WITH EVERY MODERN
CONVENIENCE.

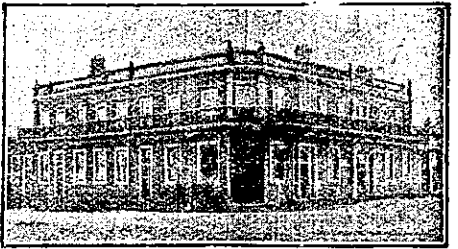
**FIRST-CLASS ACCOMMODATION FOR
TOURISTS, TRAVELLERS, ETC.**

Trout-fishing Streams within short dis-
tance of Hotel.
Twenty-two Loose Boxes. Good Trout-
fishing, Shooting and Scenery. Motor
Parties well catered for. Benzine kept in
stock.
MRS. ARTHUR PAULSEN,
Proprietress.

"THE NEW ZEALAND MOTOR AND
CYCLE JOURNAL" is the only
paper published in the Dominion ex-
clusively devoted to Motoring and Cycling
pursuits. Published monthly. Price
Three-pence.—Arthur Cleave & Co., Ltd.,
Vulcan Lane, Auckland.

Printed and Published by Arthur Cleave,
Office, Vulcan Lane, Auckland, for
the Proprietors, Arthur Cleave and Co.
Ltd. THURSDAY, JULY 14, 1910.

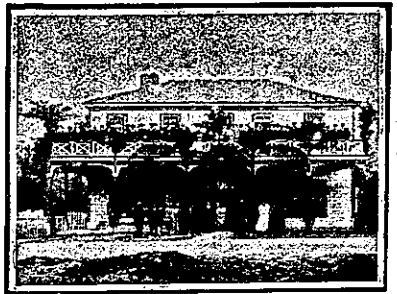
WESTPORT.



GRAND HOTEL

PALMERSTON-STREET
WESTPORT.
DAVID LEECH Proprietor

WHANGAMOMONA.



WHANGAMOMONA HOTEL.
WHANGAMOMONA.
WM. ABBOTT, Proprietor. Every-
thing up to date. First-class Accom-
modation for Travellers and the General
Public. Only Best Brands of Wines
and Spirits kept in Stock.

WHANGAREI.



WHANGAREI HOTEL.
WHANGAREI.
This fine House, just re-built in brick
and furnished in up-to-date style, now
offers unrivalled Accommodation to the
Travelling Public.
Sample Room. Hot and Cold Baths.
Two minutes' walk from Saltwater
Bathing Place.
Stabling Second to None.
Best Wines, Ales and Spirits Kept in
Stock.
SAMUEL McMAHON Proprietor

WOODVILLE.



CLUB HOTEL.
WOODVILLE.
P. DWYER Proprietor
(Late of Wellington and Dunedin).
The recognised house in the district
for Commercial Travellers. Sample
room attached to the hotel. Tourists
visiting Woodville will find excellent ac-
commodation at the above hotel. Good
fishing and shooting in and around the
district.
TELEPHONE No. 1. P.O. BOX 28.
LETTERS AND TELEGRAMS
PROMPTLY ATTENDED TO.
CABS LEAVE HOTEL TO MEET ALL
TRAINS.

CENTRAL HOTEL,
WOODVILLE.

H. STACE Proprietor.
FIRST-CLASS ACCOMMODATION.
BEST QUALITY OF WINES AND
SPIRITS.

LAING'S MASONIC HOTEL.
WOODVILLE.

Excellent Accommodation for the
Travelling Public at a Moderate Tariff.
Best Wines, Spirits, Ales, etc. Good
Billiard Table.
Ample Stabling and Paddocking.
ANDREW LAING (Late of Foxton)
Proprietor.

of Ellerslie, at his Registered Printing
Office, Vulcan Lane, Auckland, for
the Proprietors, Arthur Cleave and Co.