

NEW ZEALAND HOTEL DIRECTORY—(CONTINUED). — PATRONISED BY HORSEMEN, CYCLISTS, MOTORISTS, SPORTSMEN, COMMERCIAL TRAVELLERS AND THE THEATRICAL PROFESSION.

KAMO.

KAMO HOTEL, KAMO.
A. J. J. MEYER .. Proprietor.
Good Accommodation for Visitors and Travellers.
Best Brands of Wines and Spirits.
Good Stabling and First-class Pad-dock.

KIMBOLTON.

STAR HOTEL, KIHIKIHI.
Under New Management.
DANIEL COOPER .. Proprietor.
FIRST-CLASS ACCOMMODATION.
ONLY BEST BRANDS OF ALES, WINES AND SPIRITS STOCKED.

KIMBOLTON.

POOLE'S FAMILY AND COMMERCIAL HOTEL, KIMBOLTON.
First-class Accommodation for Travellers.
W. S. POOLE Proprietor.

MANAKAU.

MANAKAU HOTEL (Between Otaki and Levin).
GEO. W. MOORHOUSE .. Proprietor. (Late of Ferry Hotel, Springcreek).
Having taken over the above hostelry, I have decided that nothing but the very best of Wines, Ales and Spirits will be offered to the general public, and anyone wishing the choicest blends should call. Speight's Beer on Tap. Good meals. Good accommoJation.

MARTON.

CLUB HOTEL, MARTON.
R. J. WALTERS Proprietor.
First-class Accommodation for Visitors and the Travelling Public.
Only the Best Brands of Ales, Wines and Spirits kept.
First-class Billiard Room.

RAILWAY HOTEL, MARTON JUNCTION (Right Opposite the Station).
All Trains stop ample time for Refreshments. All Wines and Spirits guaranteed. The very best Table kept.
W. J. CONDER, Late Wairarapa. Proprietor.

MARTON HOTEL, MARTON.
J. HANNAN Proprietor (Late of Makutuku).
Begg to state he has recently taken over this popular House.
TARIFF MODERATE.

MARTINBOROUGH.

CLUB HOTEL, MARTINBOROUGH (Under New Management).
C. F. PRIEST Proprietor.
Excellent Accommodation for Travellers, Boarders and Visitors. A First-class and Liberal Table. Dining-room in charge of competent Chef.
WINES, SPIRITS AND ALES OF THE BEST BRANDS.

Where to Stay— **Frank Holder's PROVINCIAL HOTEL,** Clive Square, NAPIER.



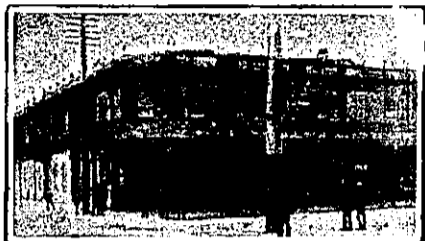
The most up-to-date Hotel in the Dominion, situated in one of the best parts of Napier, close to the Theatre and Railway Station. The Dining-room is under the supervision of a first-class Chef. Nothing will be wanting to make your stay one of pleasure and satisfaction.
NOTHING BUT THE BEST OF WINES AND SPIRITS STOCKED.
TARIFF, 6s PER DAY.
Telephone No. 631.

MORRINSVILLE.

NOTTINGHAM CASTLE HOTEL, MORRINSVILLE.
(Five Minutes from Railway Station).
JAS. GANLEY Proprietor.
This Hotel has recently been renovated and many additions made.
First s Accommodation for the Travelling Public. Meals at all hours. Wines and Spirits of Best Brands only.

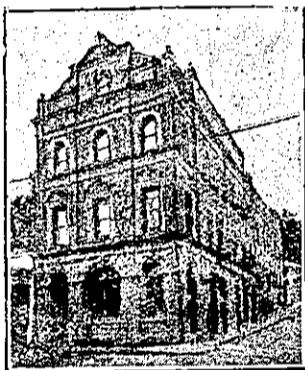
NAPIER.

KING'S TERMINUS HOTEL, NAPIER, N.Z. (Adjoining Railway Station).
Under Entirely New Management. Thoroughly Renovated and Re-furnished throughout. Excellent Cuisine. Hot, Cold and Shower Baths. Comfort, Civility and Attention. Letters and Telegrams promptly attended to.
TARIFF, 6s 6d PER DAY.
Telephone 41. P.O. Box 52.
CHAS. J. KING Proprietor.



CRITERION HOTEL, HASTINGS-ST., NAPIER.
An Up-to-date Hotel with every Modern Convenience.
New Commercial Sample Rooms.
PERCY MARTIN .. Manager (Late Railway Hotel, Hastings).

ROYAL HOTEL, CARLYLE-STREET, NAPIER (Right opposite Recreation Ground).
GEO. H. GILDING Proprietor.



EMPIRE HOTEL, NAPIER. (Close to Post Office).
Thirty-eight Bedrooms, Commercial Room, Sitting Rooms, Study, etc. Hot, Cold, and Shower Baths. Tam-o'-Shanter and Oban Whisky. Speight's and Manning's Ales. Tariff, 5s 6d per day; 25s per week.
JOHN BURRIDGE - - Proprietor. (For 23 years manager of Hawke's Bay Club.)

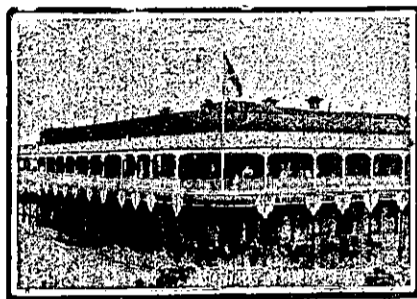
SIMPSON'S CENTRAL HOTEL, EMERSON-STREET, NAPIER.
Now prepared to receive the Travelling Public. First-class Accommodation. Beer, Wine, and Spirits guaranteed of the best.

NAPIER.—Continued.

ALBION HOTEL, NAPIER.
H. CLAUDE FOX. PROPRIETOR.

NEW PLYMOUTH.

BREAKWATER HOTEL, MOTUROA, NEW PLYMOUTH.
Situatd three minutes' walk from the Wharf. Only the best of Ales, Wines and Spirits kept. Excellent Accommodation and Good Fishing.
Telephone, 152
TOMMY KNOWLES .. Proprietor.



WHITE HART HOTEL, opposite Post and Telegraph Government Offices, NEW PLYMOUTH.
C. CLARKE Proprietor.
P.O. Box 30. Telephone 43.

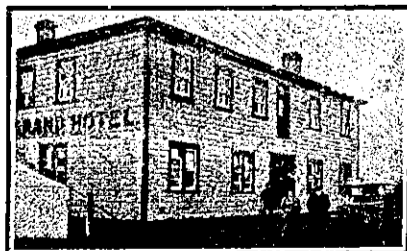
The above well-known Hostelry is the appointed house for the Commercial Travellers' Association. Only the best brands of Wines and Spirits. Speight's Dunedln Ale always on draught. First-class Accommodation for Tourists, Travellers, and Families.

IMPERIAL HOTEL, NEW PLYMOUTH.
This well-known house of call is one of the most centrally situated hotels in New Plymouth, and one of the oldest established in the province. Its proximity to the railway station offers facility to the travelling public of being able to leave by the early morning trains. Guests may depend upon being called in time and obtaining breakfast before leaving. The bedrooms are well and comfortably furnished. Special attention has been paid to the fire-escapes.
Wines, Ales, and Spirits of First-class Quality only are kept in stock.
Correspondence promptly attended to. Telephone No. 123.
TARIFF: 6s. 6d. per day. Arrangements by the week.
J. SMITH - - - - Proprietor.



Being centrally situated, is unequalled for Tourists and Commercial Gentlemen. The Table is maintained at a uniform standard of excellence, and visitors can be certain of obtaining the best Menu in New Plymouth. Hot and Cold Baths always available. Sanitary appointments are well up to date. Night Porter in attendance.
J. McKEAN - - - Proprietor.
P.O. Box 21. Telephone No. 30.

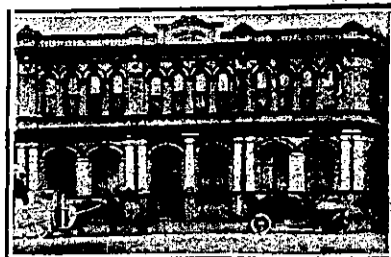
OHAKUNE.



GRAND HOTEL, OHAKUNE.
SPECIALLY APPOINTED BY COOK'S TOURIST DEPARTMENT AND REFERENCED BY GOVERNMENT TOURIST DEPARTMENT.

The largest and most Commodious Hotel in Ohakune, the special feature being the large number of single Bedrooms. Three Sitting-rooms, Commercial rooms, and Sample rooms. Hot and Cold Water Baths. Lighted throughout by Acetylene Gas. Night Porter kept. The Proprietor has Comfortable Coaches running to meet all Trains.
Telegrams: Grand, Ohakune
H. W. LITTLEWOOD .. Proprietor.

OAMARU.



NORTHERN HOTEL, TYNE STREET, OAMARU.—New, and up-to-date with every convenience. Motor Cars on hire. Special arrangements with Tourists, Theatrical Parties, etc. Tariff moderate. Telephone 233.
MRS. M. COLLINS, Proprietress.

OTAKI.

THE TELEGRAPH HOTEL, OTAKI.
JAS. WOODS Proprietor.

This New Hostelry is now open to the public, and the Proprietor will be pleased to greet old friends and new at the Hotel.

The whole of the Furniture, Fittings, etc., are absolutely New and Up-to-Date, and Customers may rely on receiving the best of attention, and most comfortable apartments at the Telegraph.

ALL LIQUORS OF THE BEST BRANDS.
JAMES WOODS.

PAEKAKARIKI.

PAEKAKARIKI HOTEL.
The New Hotel is now open to receive visitors. Ideal seaside resort. Splendid accommodation.
Nicely furnished. Every attention.
All trains to and from Wellington stay ample time for travellers to obtain refreshments.
F. HILTON Proprietor.

PALMERSTON NORTH.

MASONIC HOTEL (late Mullooney's), Opposite Station, PALMERSTON NORTH.
J. A. PAWSON, late of Hunterville and Marton, begs to inform the public that he has taken over this well-known House.

All Trains Stop Ample Time for Refreshments.

CENTRAL HOTEL, PALMERSTON NORTH.
A. MOYNIHAN - - - Proprietor.
The Central Hotel on Main street West in Palmerston is surely the best. The tables good, the bedrooms fine. With best of spirits, beer and wine; Fine sitting-rooms, baths hot and cold. And a welcome sure for young and old. So call on me when next you pass, And we'll enjoy a friendly glass.

THE COMMERCIAL HOTEL, PALMERSTON NORTH.
T. CHILDS Proprietor.
The proprietor of this conveniently-situated Hotel having had the premises entirely renovated and remodelled, is prepared to receive travellers and the public generally, and guarantees strict attention, the best of Wines and Spirits, and trusts to obtain by these means a fair share of patronage.

FAMILY HOTEL (Rangitikei Line), PALMERSTON NORTH.
This favourite hostelry has now come under the proprietorship of C. W. Merrylees. The house has been thoroughly renovated and brought up-to-date in every way. Only the Best Brands of Liquor kept in Stock. Lodgers specially catered for. Luncheon from 12 to 2 p.m. Good stabling and kennels.
C. W. MERRYLEES .. Proprietor.

THE NEW RAILWAY HOTEL, (Opposite Railway Station) PALMERSTON NORTH.
J. HURLEY Proprietor.

Over 70 Rooms, 6 Bathrooms (hot and cold water), newly furnished throughout. Up-to-date in every respect. First-class Table. Best Liquors only. Terms Moderate.

BURTON BREWERY CO. LIMITED, PALMERSTON NORTH.
ALES AND STOUT IN BULK OR BOTTLE. Brewed only from Choicest Hops and Malt.
To be obtained at all the PRINCIPAL HOTELS IN THE WELLINGTON DISTRICT.

THE NEW CALEDONIAN HOTEL, Hastings Street, NAPIER.
Writes or Wire for Rooms. Everything New and of the Best. Promenade Roof.
A. C. BARNES, Proprietor.