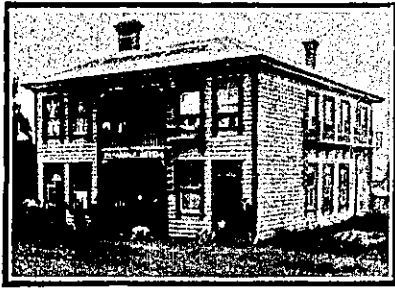


NEW ZEALAND HOTEL DIRECTORY—(CONTINUED). — PART OWNED BY HORSEMEN, CYCLISTS, MOTORISTS, SPORTSMEN, COMMERCE TRAVELLERS AND THE THEATRICAL PROFESSION.

PAPAKURA.



PAPAKURA HOTEL,
PAPAKURA.
Under New Management.
Recently Renovated throughout.
Splendid Accommodation and Cuisine.
Large Rooms for use of Clubs. Saddle
Horses and Buggies for hire to all parts
of district.
W. PARKINSON Proprietor.



GLOBE HOTEL, PAPAKURA.
J. T. GRAY - - Proprietor.
FIRST-CLASS ACCOMMODATION.
BEST BRANDS WINES AND SPIRITS.
GOOD TABLE.

PORIRUA.

PORIRUA HOTEL,
PORIRUA.

This well-known and popular house
has just been rebuilt. Visitors to Ti-
tah Bay and the surrounding district
will find this favourite hostelry a boon.
Superior Accommodation is available
for Tourists and Families. Hot and
Cold Baths; excellent cuisine, combined
with civility. Only the best of Wines
and Spirits stocked. Staples' XXX on
tap. Good Stabling. Tariff, 6s per
day, special arrangement for permanent
Boarders.

N. O'HALLORAN .. Proprietress.

RUSSELL.

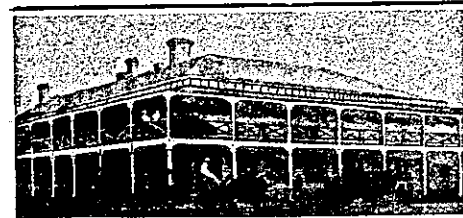


DUKE OF MARLBOROUGH HOTEL,
RUSSELL, BAY OF ISLANDS.
(The First Licensed House in New Zea-
land.)

First-class Accommodation. Attention
and Civility, as well as a Good Table,
guaranteed, with "some" Fish of the
choicest almost every day. Give the
House a Call and see for yourselves.
Boats for Hire. Billiards, etc. Charges
Reasonable. Nothing but the Best of
Beers and Liquors kept in Stock.

DAVID FORSYTH Proprietor.

STRAITFORD.



THE STRATFORD HOTEL,
STRAITFORD.

F. RHODES Proprietor.
The Best-appointed Hotel in the District
Five Commodious Sample Rooms.
Wines and Spirits only best procurable.
Speight's XXX Dunedin Beer always on
draught. Telegrams promptly attended
to. Competent Chef in charge of Cuisine.
Telephone No. 31. P.O. Box No. 31.

TAURANGA.

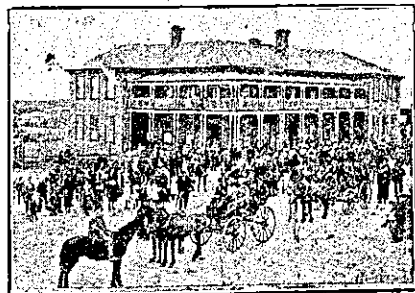
TAURANGA HOTEL, STRAND.
TAURANGA.
Under New Management.
T. R. NIXON,
(Late of Carpenters' Arm, Auckland).
Desires to intimate that he has taken
over the above popular House, where
he will be pleased to meet old and new
Patrons. Extensive Alterations and
Improvements have been effected, and
Visitors will find every comfort and
convenience. Tariff moderate. Wines
and Spirits of Best Brands only. Night
Porter in attendance.

TAIHAPE.



ERN'S HOTEL, TAIHAPE.
E. A. WAKEMAN Proprietor.
This well-appointed Hotel offers First-
class Accommodation for Tourists and
Travellers. Only the Best Brands of
Liquors Stocked. Good Table and At-
tendance. Passengers by early Trains
can be called and obtain Breakfast.
Night Porter kept. Tariff, 8s per day.
Travellers using Taihape as Stopover on
Journey Northward pass through the Fin-
est Scenery on the Main Trunk Line in
daylight.

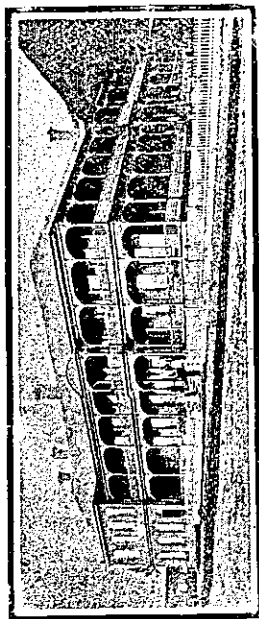
TE AROHA.



PALACE HOTEL
THE PREMIER HOTEL OF TE
AROAHA.

B. GOLDWATER Owner.
Offers Special Accommodation for
Tourists, Families and Visitors.
Commercial Sample Room. Tele-
grams Promptly Attended to.
Spacious Bedrooms, Private Parlours.
Hot, Cold, and Shower Baths.

TARIFF: From 7s Per Day.
THE SPORTING HOTEL OF THE
DISTRICT



HOT SPRINGS HOTEL, TE AROHA.
UNDER DISTINGUISHED PATRONAGE.
R. L. SOMERS Proprietor.

TE AWAMUTU.

COMMERCIAL HOTEL, TE
AWAMUTU.
JOSEPH BATHURST .. Proprietor.
EVERY MODERN CONVENIENCE
BATH ROOMS, BILLIARD ROOM.
FIRST-CLASS SAMPLE ROOMS.

TE AWAMUTU HOTEL,
TE AWAMUTU.

JAMES JACKSON .. Proprietor.
First-class Accommodation; Moder-
ate Tariff. Only Best Brands Ales,
Wines, A Free House, Dunedin Beer
on Draught

TE KUITI.



RAILWAY TEMPERANCE HOTEL,
TE KUITI.
F. H. SIMS Proprietor.
Owing to the great increase of busi-
ness, F.H.S. has been compelled to
erect 12 additional rooms, including
Large Commercial Room. Every Com-
fort and Attention. Travellers by the
Early Train specially catered for.
Next to Post and Telegraph Office.
Telegrams: "Sims." Te Kuiti.

TE KUITI—Continued



ROOKWOOD,
TAUPIRI-STREET, TE KUITI.

These Fine Premises have been lately
erected, and are newly furnished
throughout.
Splendid Accommodation for Tourists
and the Travelling Public.
Special attention given to Commercial
Men.
Three Minutes from Railway.
Hot and Cold Baths.
Porter meets all Trains.

MISS MILLS Proprietress.

THAMES.

PURIRI HOTEL, PURIRI.
(10 Miles from Thames).

JOHN GANLEY Proprietor.

FIRST-CLASS ACCOMMODATION.
CHARGES MODERATE.
ONLY BEST BRANDS ALES, WINES
AND SPIRITS KEPT.

SALUTATION HOTEL,
MARY STREET, THAMES.

H. BROWNLEE Proprietor.

SUPERIOR ACCOMMODATION.
BEST BRANDS OF BOTTLED ALES
AND FOUT, SPIRITS, WINES, ETC.
SPEIGHT'S DUNEDIN ALE ON
DRAUGHT.

TIMARU.

CROWN HOTEL, TIMARU.
W. H. ANDERSON .. Proprietor
(Late Excelsior).

W. H. Anderson has pleasure in in-
forming his Friends and Travelling Pub-
lic that he has had the Hotel renovated
and refurnished up-to-date, and can offer
accommodation equal to anything in
Timaru.

Wines, Spirits and Ales of the Best
Brands. Prompt attention to Letters and
Telegrams. Terms from 6s. per day.

CLUB HOTEL,
TIMARU.

Close to Railway Station, and offering
Excellent Accommodation to Tra-
vellers.

Liberal Cuisine. Hot and Cold Baths.
Best Brands of Liquors Stocked.
Moderate Tariff.

E. WARD Proprietor.



TIMARU HOTEL, STAFFORD-ST.
TIMARU.

A. P. GAWNE Proprietor.
This popular Hotel, which is in the
principal street of Timaru, has recently
undergone a thorough renovation inside
and out, and is now looked upon as the
cleanest and most comfortable house in
the district. There is a large Dining-
room (first-class table kept), and Sitting
and Commercial Rooms adjoining. Choic-
est brands of Wines and Spirits, and
Hole's Ales on Tap. A trial will convince
one. Tariff: 4s 6d per day or 25s per week.

WAIMATE.



WAIMATE HOTEL,
WAIMATE.

This Hotel is a Fine New Modern
Brick Building, up-to-date in every re-
spect.
Superior Accommodation for Travel-
lers, Visitors and Tourists.
Hot and Cold Shower and Plunge
Baths.
Sample Rooms. First-class Table.
Every Attention.
T. TWOMEY Proprietor.

WAITARA.

MASONIC HOTEL,
WAITARA.

MRS. M. CUSACK - - Proprietress.

The leading house for Commercials and
Tourists. First-class accommodation for
the travelling public at a moderate tariff.
BEST WINES AND SPIRITS ONLY
KEPT IN STOCK.

WAITARA HOTEL,
WAITARA.

MRS. YOUNG - - - Proprietress.
EXCELLENT ACCOMMODATION FOR
THE TRAVELLING PUBLIC.

WINES & SPIRITS OF THE CHOICEST
AND BEST BRANDS.

CLUB HOTEL,
WAITARA.

FIRST-CLASS ACCOMMODATION
for the Travelling Public at a Moderate
Tariff.

The above hotel has lately been rebuilt
and is replete with every convenience.

Only the Best of Ales, Wines and Spirits
kept.

Sample Room for Travellers.

A. T. LAKE - - - Proprietor.

WAVERLEY.

COMMERCIAL HOTEL,
WAVERLEY.

The Recognised House for Commercials
and Tourists.

PATRONS WILL RECEIVE ALL
HOME COMFORTS.

Letters and Telegrams promptly attended
to.

SPEIGHT'S DUNEDIN BEER ON TAP.

JAMES SMITH,
PROPRIETOR.
(Late Manager Pitecaithly and Co.,
Wellington).



How is
Business?

Folks are talking of "dull times."
We do not find times dull.

Good Printing

is essential to success. It arrests at-
tention, creates an interest, and helps
business.

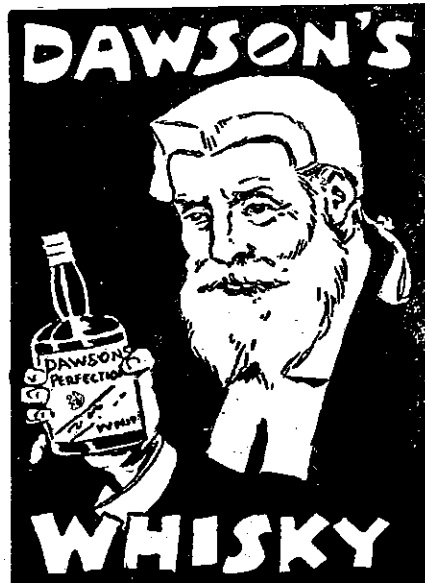
We have exceptional facilities for
the production of

**High-Grade
PRINTING**

Those business men who are anxious
to avail themselves of stylish and
attractive-printing should communi-
cate with us.

ARTHUR CLEAVE & CO.
Limited.

Vulcan Lane, Auckland.



PEARSON & Co., Ltd., Sole Agents
for Wellington district.