

NEW ZEALAND HOTEL DIRECTORY—(CONT. UZD). — PART ONISED BY HORSEMEN, CYCLISTS, MOTORISTS, SPORTSMEN, COMMERCE AND TRAVELLERS AND THE THEATRICAL PROFESSION.

PALMERSTON NORTH.—Continued.

THE NEW RAILWAY HOTEL,
(Opposite Railway Station)
PALMERSTON NORTH.

J. HURLEY Proprietor.

Over 70 Rooms, 6 Bathrooms (hot and cold water), newly furnished throughout. Up-to-date in every respect. First-class Table. Best Liquors only. Terms Moderate.

BURTON BREWERY CO. LIMITED.
PALMERSTON NORTH.

ALES AND STOUT
IN BULK OR BOTTLE.
Brewed only from Choicest Hops and Malt.

To be obtained at all the PRINCIPAL HOTELS IN THE WELLINGTON DISTRICT.

PAPAKURA.



PAPAKURA HOTEL,
PAPAKURA.

Under New Management. Recently Renovated throughout. Splendid Accommodation and Cuisine. Large Rooms for use of Clubs. Saddle Horses and Buggies for hire to all parts of district.

W. PARKINSON Proprietor.



GLOBE HOTEL, PAKAKURA.

J. T. GRAY - - Proprietor.

FIRST-CLASS ACCOMMODATION. BEST BRANDS WINES AND SPIRITS. GOOD TABLE.

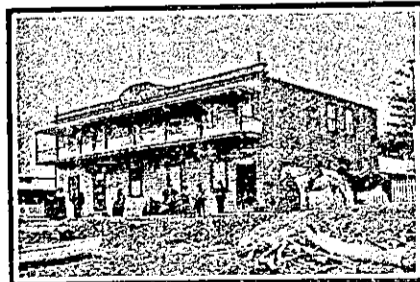
PORIRUA.

PORIRUA HOTEL
PORIRUA.

This well-known and popular house has just been rebuilt. Visitors to Tahiti Bay and the surrounding district will find this favourite hostelry a boon. Superior Accommodation is available for Tourists and Families. Hot and Cold Baths; excellent cuisine, combined with civility. Only the best of Wines and Spirits stocked. Staples' XXX on tap. Good Stabling. Tariff, 6s per day, special arrangement for permanent Boarders.

N. O'HALLORAN .. Proprietress.

RUSSELL.



DUKE OF MARLBOROUGH HOTEL,
RUSSELL, BAY OF ISLANDS.
(The First Licensed House in New Zealand.)

First-class Accommodation. Attention and Civility, as well as a Good Table, guaranteed, with "some" Fish of the choicest almost every day. Give the House a Call and see for yourselves. Boats for Hire. Billiards, etc. Charges Reasonable. Nothing but the Best of Beers and Liquors-kept in Stock.

DAVID FORSYTH .. Proprietor.

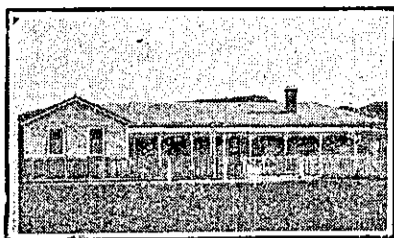
TAURANGA.

TAURANGA HOTEL, STRAND.
TAURANGA.

Under New Management. T. R. NIXON, (Late of Carpenters' Arm, Auckland).

Desires to intimate that he has taken over the above popular House, where he will be pleased to meet old and new Patrons. Extensive Alterations and Improvements have been effected, and Visitors will find every comfort and convenience. Tariff moderate. Wines and Spirits of Best Brands only. Night Porter in attendance.

TAUMARANUI.

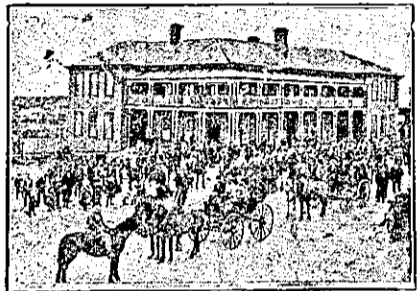


MEREDITH HOUSE,
TAUMARANUI, N.Z.

Trunk Line). First-class Accommodation. Excellent Cuisine. Cook's Coupons Accepted. Telegraphic address: "Mathias," Taumaranui. Every attention given to Telegrams.

KERR AND MATHIAS, Proprietresses.

TE AROHA.



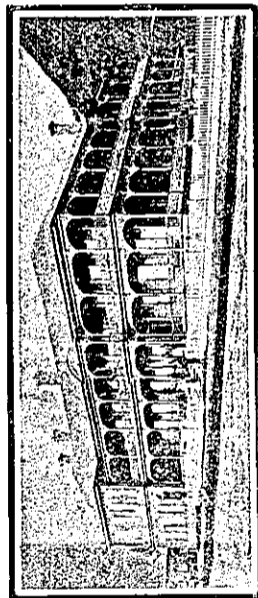
PALACE HOTEL
THE PREMIER HOTEL OF TE AROHA.

B. GOLDWATER Owner.

Offers Special Accommodation for Tourists, Families and Visitors. Commercial Sample Room. Telegrams Promptly Attended to. Spacious Bedrooms, Private Parlours. Hot, Cold, and Shower Baths.

TARIFF: From 7s Per Day.

THE SPORTING HOTEL OF THE DISTRICT



HOT SPRINGS HOTEL, TE AROHA.
UNDER DISTINGUISHED PATRONAGE.

R. L. SOMERS Proprietor.

TE AWAMUTU.

COMMERCIAL HOTEL, TE AWAMUTU.

AWAMUTU.

JOSEPH BATHURST .. Proprietor.

EVERY MODERN CONVENIENCE

BATH ROOMS, BILLIARD ROOM. FIRST-CLASS SAMPLE ROOMS.

TE AWAMUTU HOTEL,
TE AWAMUTU.

JAMES JACKSON .. Proprietor.

First-class Accommodation; Moderate Tariff. Only Best Brands Ales, Wines, A Free House. Dunedin Beer on Draught.

TE KUITI.



RAILWAY TEMPERANCE HOTEL,
TE KUITI.

F. H. SIMS Proprietor.

Owing to the great increase of business, F.H.S. has been compelled to erect 12 additional rooms, including Large Commercial Room. Every Comfort and Attention. Travellers by the Early Train specially catered for. Next to Post and Telegraph Office. Telegrams: "Sims," Te Kuiti.

TE KUITI.—Continued



ROOKWOOD,
TAUPIRI-STREET, TE KUITI.

These Fine Premises have been lately erected, and are newly furnished throughout.

Splendid Accommodation for Tourists and the Travelling Public. Special attention given to Commercial Men.

Three Minutes from Railway. Hot and Cold Baths. Porter meets all Trains.

MISS MILLS Proprietress.

THAMES.

PURIRI HOTEL, PURIRI.

(10 Miles from Thames).

JOHN GANLEY Proprietor.

FIRST-CLASS ACCOMMODATION. CHARGES MODERATE. ONLY BEST BRANDS ALES, WINES AND SPIRITS KEPT.

SALUTATION HOTEL,
MARY STREET, THAMES.

H. BROWNLEE Proprietor.

SUPERIOR ACCOMMODATION. BEST BRANDS OF BOTTLED ALES AND FOUT, SPIRITS, WINES, ETC. SPEIGHT'S DUNEDIN ALE ON DRAUGHT.

TIMARU.

CROWN HOTEL, TIMARU.

W. H. ANDERSON .. Proprietor (Late Excelsior).

W. H. Anderson has pleasure in informing his Friends and Travelling Public that he has had the Hotel renovated and refurbished up-to-date, and can offer accommodation equal to anything in Timaru.

Wines, Spirits and Ales of the Best Brands. Prompt attention to Letters and Telegrams. Terms from 6s. per day.

CLUB HOTEL,
TIMARU.

Close to Railway Station, and offering Excellent Accommodation to Travellers.

Liberal Cuisine. Hot and Cold Baths. Best Brands of Liquors Stocked. Moderate Tariff.

E. WARD Proprietor.



TIMARU HOTEL, STAFFORD-ST.
TIMARU.

A. P. GAWNE Proprietor.

This popular Hotel, which is in the principal street of Timaru, has recently undergone a thorough renovation inside and out, and is now looked upon as the cleanest and most comfortable house in the district. There is a large Dining-room (first-class table kept), and Sitting and Commercial Rooms adjoining. Choicest brands of Wines and Spirits, and Hotel's Ales on Tap. A trial will convince one. Tariff: 4s 6d per day or 25s per week.

WAIMATE.



WAIMATE HOTEL,
WAIMATE.

This Hotel is a Fine New Modern Brick Building, up-to-date in every respect.

Superior Accommodation for Travellers, Visitors and Tourists. Hot and Cold Shower and Plunge Baths.

Sample Rooms. First-class Table. Every Attention.

T. TWOMEY Proprietor.

WAITARA.

MASONIC HOTEL,
WAITARA.

MRS. M. CUSACK - - Proprietress.

The leading house for Commercial and Tourists. First-class accommodation for the travelling public at a moderate tariff.

BEST WINES AND SPIRITS ONLY KEPT IN STOCK.

WAITARA HOTEL,
WAITARA.

MRS. YOUNG - - - Proprietress.

EXCELLENT ACCOMMODATION FOR THE TRAVELLING PUBLIC.

WINES & SPIRITS OF THE CHOICEST AND BEST BRANDS.

CLUB HOTEL,
WAITARA.

FIRST-CLASS ACCOMMODATION for the Travelling Public at a Moderate Tariff.

The above hotel has lately been rebuilt and is replete with every convenience.

Only the Best of Ales, Wines and Spirits kept.

Sample Room for Travellers.

A. T. LAKE - - - Proprietor.

WAVERLEY.

COMMERCIAL HOTEL,
WAVERLEY.

The Recognised House for Commercial and Tourists.

PATRONS WILL RECEIVE ALL HOME COMFORTS.

Letters and Telegrams promptly attended to.

SPEIGHT'S DUNEDIN BEER ON TAP.

JAMES SMITH, PROPRIETOR. (Late Manager Fitzcally and Co., Wellington).



How is Business?

Folks are talking of "dull times." We do not find times dull.

Good Printing

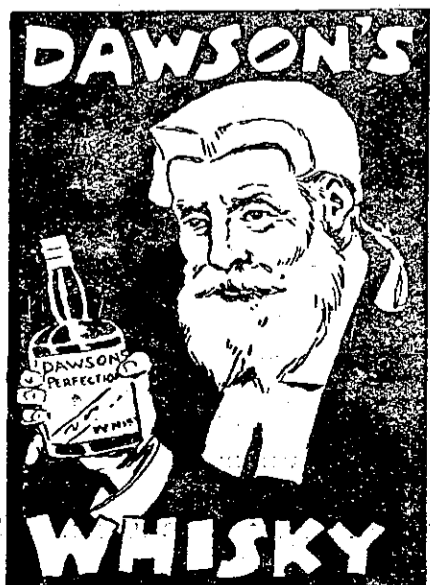
is essential to success. It arrests attention, creates an interest, and helps business.

We have exceptional facilities for the production of

High-Grade PRINTING

Those business men who are anxious to avail themselves of stylish and attractive printing should communicate with us.

ARTHUR CLEAVE & CO. Limited.
Vulcan Lane, Auckland.



PEARSON & Co., Ltd., Sole Agents for Wellington district.