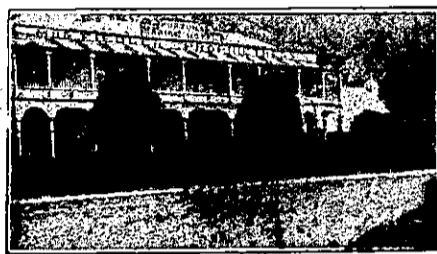


NEW ZEALAND HOTEL DIRECTORY—(CONTINUED). — PATRONISED BY HORSEMEN, CYCLISTS, MOTORISTS, SPORTSMEN, COMMERCIAL TRAVELLERS AND THE THEATRICAL PROFESSION.

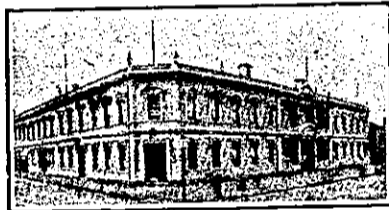
CHRISTCHURCH.



THE NEW CLARENDON HOTEL, CHRISTCHURCH.
CORNER OF OXFORD TERRACE AND WORCESTER-STREET
(One Minute's Walk from General Post Office.)
Recently Re-built. Superior Accommodation for Tourists and Travellers. All Modern Conveniences. Splendidly Situated.
D. COLLINS .. Proprietor.



MARINE HOTEL, SUMNER.
An Ideal Holiday Resort, offering excellent Accommodation for the Travelling Public.
BEST BRANDS OF WINES AND SPIRITS. HOT, COLD, AND SHOWER BATHS. BILLIARD TABLE.
JAS. HATFIELD Proprietor.



WHERE TO STAY IN CHRISTCHURCH.
STOREY'S HOTEL.
Right Opposite Railway Station.
Convenient to all parts of City and Suburbs.
Electric Cars start from the door.
Proprietor: WILLIAM JAMES.
(Late of "Somerset Hotel," Ashburton).

KAVANAGH'S QUEEN'S HOTEL.
Corner Manchester and Cashel Streets, CHRISTCHURCH.
(Opposite Union S.S. Co.'s Offices.)
J. J. KAVANAGH - Proprietor.
Pleased to see old and new friends. Visitors and travelling public will be accorded the very best attention. Liquors of the Best Brands only. Speight's Ales on draught.

DANNEVIRKE.

When Visiting
DANNEVIRKE,
Call at the

JUNCTION HOTEL

BEST ALES, WINES, AND SPIRITS KEPT.
Moderate Tariff.

CHAS. BADDELEY, PROPRIETOR.

DARGAVILLE.



NORTHERN WAIROA HOTEL, DARGAVILLE.
EVERY POSSIBLE CONVENIENCE FOR THE TRAVELLING PUBLIC.
The BILLIARD ROOM is fitted with one of Alcock's Best Tables. Good Stables and Paddock adjoining the premises.
E. C. BASS Proprietor.

DARGAVILLE.—Continued.

UNDER THE PATRONAGE OF HIS EXCELLENCY THE GOVERNOR.
NOTICE TO THE GENERAL PUBLIC.
THE CENTRAL HOTEL, DARGAVILLE
(Close to Wharf and Railway Station).

Is now under the Management of MR. H. H. DYER.
And the Travelling Public will find it one of the most Convenient Houses in the District.
At ACCOMMODATION.
BEST BRANDS OF WINES AND SPIRITS.
Telegrams Promptly Attended To.

DRURY.



RAILWAY HOTEL, DRURY.
This Hotel is within easy distance from town, being only 23 miles by rail direct. There is splendid Shooting in the district.
First-class Table. Moderate Tariff. Special arrangements for week-end parties.
MRS. M. LINGLE .. Proprietress.

DUNEDIN.

BOWLING GREEN HOTEL.
Corner of Frederick and Cumberland streets, DUNEDIN.
W. D. Wyatt, late of Wellington, begs to inform his Friends and Country Visitors that he has taken the above well-known Hotel, which has been thoroughly Renovated and Refurnished, and is now in a position to offer his Patrons First-class Accommodation.
TERMS MODERATE. NOTED HOUSE FOR BEST WINES AND SPIRITS.

SOUTHERN HOTEL, PRINCES-STREET, DUNEDIN.

H. T. ANDREWS .. Proprietor.
(Late of Wolseley Hotel, Winchester).
Splendid accommodation for Visitors. Only the very Best Wines and Spirits Stocked.

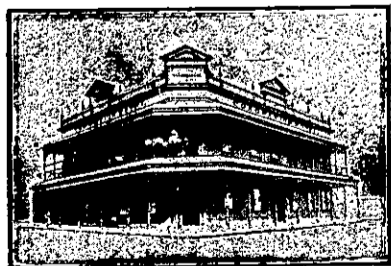
GLADSTONE HOTEL, MACLAGGAN-STREET, DUNEDIN.

JOHN COLLINS .. Proprietor.
(Late of Al Hotel, Pelichet Bay).
The most Centrally-situated Hotel in the City. First-class Accommodation for Tourists Travellers, and Boarders. Suites of rooms for Families. Charges Moderate. A Special Feature: is Lunch from 12 to 2 o'clock. Hot, Cold, and Shower Baths. The Very Best of Wines, Ales, and Spirits supplied.

CRITERION HOTEL, PRINCES STREET, DUNEDIN.

First-class Accommodation for Boarders and Travelling Public. Prompt attention to Letters and Telegrams. Night and Day Porter kept. SPEIGHT'S ALES ON DRAUGHT. Telephone 211. P.O. Box 411.
JAMES MURPHY .. Proprietor.

ELTHAM.



CORONATION HOTEL, ELTHAM.
J. H. BLEAKLEY, Proprietor.—Excellent Accommodation for the Travelling Public. The Proprietor wishes to announce that he has just taken over the above hotel. The furniture and fittings throughout are all that can be desired, and visitors can rely on getting the best of attention. Only the best of Wines, Ales, and Spirits kept. Letters and Telegrams promptly attended to. Hot and Cold Shower Baths.

FEATHERSTON.

EMPIRE HOTEL, FEATHERSTON.
The EMPIRE is the appointed Hotel to the Wellington Commercial Travellers' Association, and N.Z. Cyclists' Touring Club.
JOHN H. TULLY Proprietor.

FEILDING.

CHELTENHAM HOTEL, NEAR FEILDING.
Having taken over the above Hotel, I wish to notify the Residents of the District that I have stocked it with the best Liquors, etc., and customers can rely upon getting the brand they ask for.

R. W. BEADNALL.

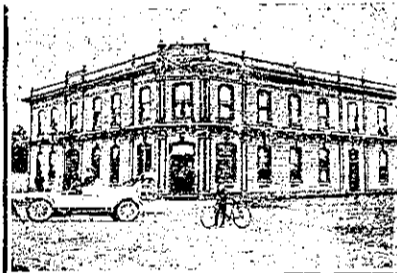
FOXTON.



MANAWATU HOTEL, FOXTON.
FRED HADFIELD - Proprietor.
Visitors will find every Comfort and Convenience at this well-known house.
ONLY the BEST BRANDS OF WINES, SPIRITS, AND ALES STOCKED.



POST OFFICE HOTEL, FOXTON.
BEST OF WINES AND SPIRITS.
ONLY SPEIGHT'S BEER.
Coaches leave Hotel for Shannon and Levin twice daily.
FIRST-CLASS ACCOMMODATION FOR TRAVELLERS.
GRAY AND DALZELL .. Proprietors.



WHYTE'S HOTEL, FOXTON.
The recognised house for Commercial Travellers. This Hotel offers superior accommodation to Travellers, and is a first-class family house in every respect. Letters and telegrams promptly attended to. Only the best of Ales, Wines and Spirits stocked.
W. J. WHITE Proprietor.

HAWERA.

CENTRAL HOTEL.
THE WELL-KNOWN HOUSE IN HAWERA FOR TRAVELLERS AND TOURISTS.
EVERYTHING OF THE BEST.
B. HARRINGTON, Proprietor.



SHAMROCK HOTEL, HAWERA.
JAS. BIGGINS Proprietor.
(Late of Tarataki Hotel).
First-class Accommodation. Best of Liquors. Moderate Tariff.

HUNTLY.

HUNTLY HOTEL, HUNTLY.
L. B. HARRIS Proprietor.
This Hotel is now one of the largest in the Waikato. All trains stop at Huntly, and the Hotel is a few yards from the Station. First-class Accommodation and Excellent Table.

HAMILTON.



WAIKATO HOTEL, HAMILTON EAST.
The travelling public will find every modern comfort and convenience at this well-known and popular Hotel. Coaches meet all trains.
J. W. H. BRIGHT
(Late of Hamilton Hotel).
Proprietor.



COMMERCIAL HOTEL, HAMILTON.
DAVID NORDEN Proprietor
The Travelling Public specially Catered for.
TERMS MODERATE.
Telephone No. 12.



HAMILTON HOTEL, HAMILTON.
J. B. HOOPER Proprietor
This Commodious and Up-to-date Hotel is replete with every modern convenience for the Comfort of Visitors. The Cuisine is first-class. Tariff Moderate.
ONLY THE BEST OF LIQUORS KEPT ON STOCK.

KAWAKAWA.



JUNCTION HOTEL, KAWAKAWA.
J. HOGG Proprietor.
Mr. Hogg will be pleased to meet his numerous friends at the above well-known favourite and spacious Hostelry, and hopes by strict attention and civility to customers to merit a continuance of the liberal support accorded to the house in the past. Wines, Spirits and Beers of the First Quality. Billiards, Buggies, etc. Sample Rooms. The Best Accommodation. A Good Table kept. Charges Moderate.

MOKITIKA.

KELLER'S HOTEL, MOKITIKA.
Patronised by the Leading Commercial men on the West Coast. Only the best brands, etc., supplied.
W. KELLER Proprietor.
Under Vice-regal Patronage.

HUNTERVILLE.

HUNTERVILLE HOTEL, HUNTERVILLE.
E. D. HAMMOND Proprietor
The Proprietor wishes to intimate that he has just taken over the above premises. This Hotel offers superior Accommodation to Travellers. Good Table. Best of Wines, Ales, etc. Terms: 4s 6d per day.

ARGYLE HOTEL, HUNTERVILLE.
First-class Accommodation for the Travelling Public. Everything of the best quality. Moderate Tariff.
Letters and Telegrams promptly attended to.
E. McMANAWAY .. Proprietor.