

NEW ZEALAND HOTEL DIRECTORY—(CONTINUED). — PATRONISED BY HORSEMEN, CYCLISTS, MOTORISTS, SPORTSMEN, COMMERCIAL TRAVELLERS, AND THE THEATRICAL PROFESSION.

WANGANUI.

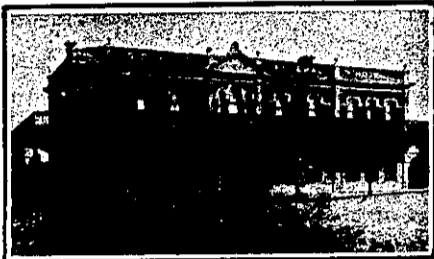


Established 1857... Tel. No. 46. P.O. Box No. 54. FITTED THROUGHOUT WITH ELECTRIC LIGHT

FOSTER'S HOTEL. Nearly opposite Town Bridge, TAUPO QUAY, WANGANUI.

J. R. FOSTER, Proprietor. Within Three Minutes of Railway Station and River Tourist Steamers.

FEDERAL HOTEL, TAUPO QUAY, WANGANUI. (Opposite Up-river Steamer Wharves).



Modern, Brick, Fire-proof, Two-storeyed building. Cosily furnished with all home comforts. First-class Table and Moderate Tariff.

The Best Brands of Ales, Stout and Spirits always procurable.

NEW FEDERAL HOTEL, WANGANUI. Overlooking Motua Gardens and Beautiful View of the River.

Under New Management. W. BELLVE Proprietor.



RUTLAND HOTEL, WANGANUI. F. C. FABER Proprietor.

THE HOME OF THE TOURIST.

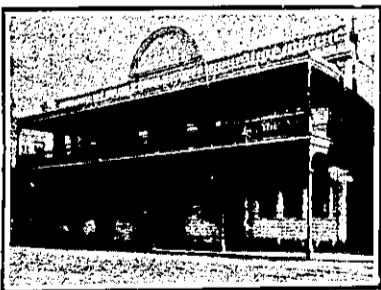
The above Hotel has just been rebuilt and newly furnished throughout in an up-to-date style. The reading, writing and smoke rooms are replete with every convenience. The greatest care is taken to maintain a reputation for home comfort. Dark room for photographers.



PROVINCIAL HOTEL, WANGANUI.

FIRST-CLASS ACCOMMODATION FOR THE TRAVELLING PUBLIC. ONLY THE BEST OF ALES, WINES, AND SPIRITS KEPT IN STOCK.

W. TUCK Proprietor.



MCCARTHY'S HOTEL, WANGANUI.

IMMEDIATELY OPPOSITE RAILWAY STATION AND WHARVES.

C. J. MCCARTHY - - Proprietor. P.O. Box 134. Telephone 147.

WELLINGTON.

THE EMPIRE HOTEL,

(LIMITED).

THE LEADING & MOST CENTRAL

HOTEL IN WELLINGTON.

WELLINGTON—Continued.

COLUMBIA PRIVATE HOTEL, LOWER CUBA ST., WELLINGTON.



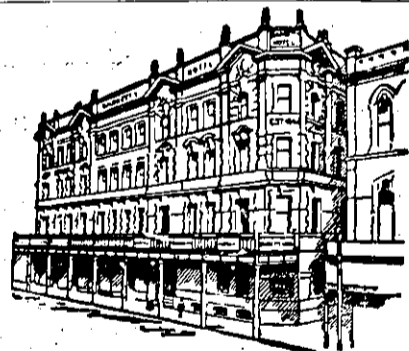
New and up-to-date, with every convenience. Night and Day Porter. Electric Elevator. Magnificent Garden Roof commanding view of City and Harbour. Unrivalled for position, situated close places amusement, railway station, and wharves. Trams pass the door. Trains and boats met. Tariff, 6s. per day; 30s. weekly. Permanent Boarders from 25s.

LUNCHEON—12 to 2. J. BROWNE - - - Proprietor. Telephone 1125.

FAMILY HOTEL, LOWER HUTT.

JOHN YOUNG .. Proprietor.

This Hotel offers Accommodation second to none in the district. Central position and close to the Post Office. Billiards, Excellent Table, and Best Brands of Wines and Spirits. Only Speight's Beer drawn. Good Stabling and Commodious Loose Boxes.



BARRETT'S HOTEL, LAMBTON QUAY, WELLINGTON (Op. Bank of New Zealand).

Newly Built in Brick. Over 70 Rooms. All Modern Conveniences. Close to Wharf and Post Office. Excellent Cuisine. Day and Night Porters. Tariff 7s per day, weekly by arrangement. Letters and Telegrams receive prompt attention. Phone 1076.

C. H. WILLIAMS Proprietor.



NEW OCCIDENTAL HOTEL, LAMBTON QUAY, WELLINGTON.

J. H. FAIRBAIRN .. Proprietor. UP TO DATE IN EVERY RESPECT. ELECTRIC ELEVATOR. DAY AND NIGHT PORTER. Tariff, 5s Per Day. Garden Roof. A Bottle Store adjoins the Hotel, where a single bottle may be obtained at wholesale price. Best Brands of Wines, Spirits and Ales. Telephone 91.

"THE NEW ZEALAND MOTOR AND CYCLE JOURNAL" is the only paper published in the Dominion exclusively devoted to Motoring and Cycling pursuits. Published monthly. Price Three-pence.—Arthur Cleave & Co., Ltd., Vulcan Lane, Auckland.

WELLINGTON.—Continued.

WHEN VISITING WELLINGTON, STAY AT THE

ALBERT HOTEL. Which has recently been re-furnished from cellar to ceiling, and possesses every modern convenience. Letters and telegrams will receive prompt attention. T. G. ASHMAN, Proprietor.

VISITORS & TOURISTS

May rely upon having

EXCELLENT ACCOMMODATION —AT— And finding everything First-class at the

LOWER HUTT.

Half-hour Drive from Trentham and One Hour from Wellington.

Tariff, £2 2s. per Week.

E. J. ANSTIS - Proprietor.

MASONIC HOTEL,

CUBA STREET,

WELLINGTON.

FREDK. DOBSON, PROPRIETOR.

TARIFF MODERATE.

DAY AND NIGHT PORTER KEPT.

CALL AND SEE FRED.

He will be delighted to see you.

THE NEW COMMERCIAL HOTEL,

LAMBTON QUAY WELLINGTON.

Proprietor .. GEO. PINNOCK. (Late Trocadero).

WINES AND SPIRITS ABOVE REPROACH.

Wellington's Latest and most Up-to-date Hostelry, very central. One minute from Wharves and General Post Office. House New, Furniture New, Everything New. Passenger Lift. Every Room Lit by Electricity. The Chef de Cuisine is a first-class man, under special contract to the management, and Guests favouring this Hotel with their patronage are assured the Bill of Fare will be of the very Best. Tariff from 3s per Day. Mid-day Lunch 12 to 2 p.m., 1s 6d. Breakfast from 6.30 a.m. Motor Cars for hire, experienced drivers, charges reasonable, long or short tours.

House open to Guests from 5 a.m. to Midnight.

DAY AND NIGHT PORTER.

CENTRAL HOTEL,

WELLINGTON.

ALBERT (Bert) MACE .. Proprietor. (Late of U.S.S. Coy).

ONLY BEST BRANDS OF WINES AND SPIRITS IN STOCK.

DON'T FORGET TO LOOK UP "BERT" WHEN VISITING WELLINGTON.

OUR OFFER TO "N.Z. SPORTING AND DRAMATIC REVIEW" READERS.

We are in touch with and can send you, on receipt of stamped and addressed envelope, the names of leading

BRITISH MANUFACTURERS AND SUPPLIERS

OF GOODS FOR EXPORT

TO THE

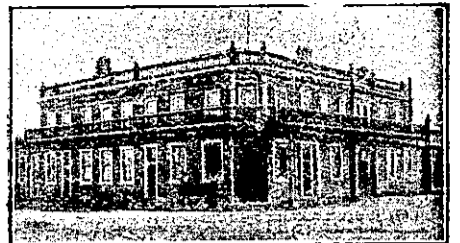
DOMINION OF NEW ZEALAND

We would be glad to give information to any New Zealanders looking for Agencies.

Address letters to The Editor, "N.Z. Sporting and Dramatic Review," Vulcan Lane, Auckland.

Printed and Published by Arthur Cleave, of Ellerslie, at his Registered Printing Office, Vulcan Lane, Auckland, for the Proprietors, Arthur Cleave and Co., Ltd., THURSDAY, MARCH 24, 1910.

WESTPORT.



GRAND HOTEL

PALMERSTON-STREET

WESTPORT.

DAVID LEECH Proprietor.

WHANGAMOMONA.



WHANGAMOMONA HOTEL.

WHANGAMOMONA.

WM. ABBOTT, Proprietor. Everything up to date. First-class Accommodation for Travellers and the General Public. Only Best Brands of Wines and Spirits kept in Stock.

WHANGAREI.



WHANGAREI HOTEL, WHANGAREI.

This fine House, just re-built in brick and furnished in up-to-date style, now offers unrivalled Accommodation to the Travelling Public.

Sample Room, Hot and Cold Baths. Two minutes' walk from Saltwater Bathing Place.

Stabling Second to None. Best Wines, Ales and Spirits Kept in Stock.

SAMUEL McMAHON Proprietor.

WOODVILLE.



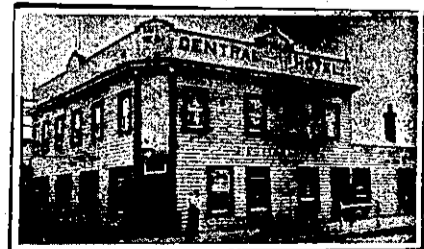
CLUB HOTEL, WOODVILLE.

P. DWYER Proprietor (Late of Wellington and Dunedin).

The recognised house in the district for Commercial Travellers. Sample room attached to the hotel. Tourists visiting Woodville will find excellent accommodation at the above hotel. Good fishing and shooting in and around the district.

TELEPHONE No. 1. P.O. BOX 58.

LETTERS AND TELEGRAMS PROMPTLY ATTENDED TO. CABS LEAVE HOTEL TO MEET ALL TRAINS.



CENTRAL HOTEL, WOODVILLE, HAWKE'S BAY.

J. DOTTOMLEY .. Proprietor.

J.B. would remind all old friends and the travelling public generally that he is still conducting the above hotel. The Central is suitably adapted for visitors to Woodville on account of its central position, and its prestige for Good Accommodation and Quality of Liquors and Ales is established.