

**A SENSATIONAL PLAY.**

Auckland and Wellington audiences will see, for the first time, Henry Arthur Jones' famous play, "The Hypocrites," which created such a sensation when staged in Sydney and Melbourne, and in the former place was preached about from the pulpit. It will be presented by the Harry Roberts-Beatrice Day Co.

**A BIG ORGANISATION.**

The coming Easter time will be no exception to the rule as regards the changing of the J. C. Williamson organisations, writes my Sydney correspondent. The Pantomime Company has taken the lead with its little jaunt over to Sydney leaving Her Majesty's Theatre in Melbourne free to accommodate the Julius Knight Dramatic Company which opened last Saturday week with "The Lion and The Mouse." Then the Royal Comic Opera Company travel down from Sydney to Adelaide next week and from the latter port embark for the West where they are due to open in Perth on Easter Saturday. The new Comic Opera Company, having finished a very successful tour of New Zealand, plays Hobart and Launceston and then comes on to Melbourne to take up the running at Her Majesty's Theatre at the conclusion of the brief dramatic season. In addition to all this interchanging which will mean the transportation of some 400 or 500 people over about 6,000 miles by land and sea, there will be two entirely new productions to handle at Easter, "Madame Butterfly" by the Grand Opera Company at the Theatre Royal in Sydney and "What Every Woman Knows" by the Nellie Stewart Company at the Princess's Theatre, Melbourne.

**J. C. WILLIAMSON COMPANY.**

The J. C. Williamson Dramatic Company finished its career in Adelaide with a very satisfactory season. The members of the Company for the most part will be drafted into other organisations under the same management, including the Nellie Stewart and the Julius Knight Companies, while Mr. T. Kingston and one or two others will join the "Peter Pan" Co., for the New Zealand tour of that fascinating Fairy Play.

**WESTS' NEW THEATRE.**

The new King's Theatre, for Wellington, erected by Wests, in conjunction with Messrs. Donovan and Linley, of Wellington, was opened last week. It is a plain commodious structure built as nearly fire-proof as is possible, having a reinforced concrete gallery and stairways, and an operator's room of similar construction, with walls 20in. thick. The operator will work in a massive strong room, and even if the film was to take fire (which is the great risk in picture halls), it would simply burn itself out, and the smoke would disappear through the large vent which leads through to the roof. The hall, which will seat 1500 people, is so constructed that a full view of the pictures can be obtained from any seat in the house.

**CHRISTCHURCH NOTES.**

My Christchurch Dramatic Correspondent writes: On the 24th inst., West's New Picture Theatre will be formally thrown open to the public. As I think I told you before, the latest addition to our places of amusement is in Gloucester-street, almost opposite the Theatre Royal. It is to be an up-to-date house of its kind, with a seating capacity of about 1800, and the back seats will command top prices. This is a common sense arrangement in a theatre built expressly for spectacular effect. Elaborate precautions have been taken to guard against fire, and the exits are so many and so well arranged that the theatre can be emptied in the twinkling of an eye. . . . At Fuller's Opera House "Deave's Merry Mannikins" are making quite a hit. Then there is Frank Yorke (a host in himself), the Scott Bros. Jack Russell, and a heap of other clever people. And the public roll up every night and flock into the popular variety theatre until it will hold no more. . . . Some capital pictures are just now delighting Colosseum audiences. "The Paris Floods" continue to attract a lot of attention; then there is a really good film "In Little Italy," and an exciting one in "A House of Cards." From the first picture to the last the entertainment is brim full of interest. . . . Easter attractions for Christchurch include: The Pollards, at the Theatre Royal; West's Pictures, at the New King's; and special holiday programmes at Fuller's Opera House and the Colosseum.

**DOMINION PURE ALE.**

Delightful to Taste.

Of Excellent Quality. It is

Made of the very best

Ingredients, by skilled workmen.

Nourishing, Nutritious and Fresh,

It is the Best

On the market in

New Zealand.

Pure Barley, Malt, and Hops are

Used in its Manufacture!

Refreshing, Re-animating and Bright, it is

Everybody's Favourite!

Always Ask for "DOMINION ALE.—

Look for the Label on the Bottle, and

Every Drink will be Nourishment!

**THE CAMPBELL & EHRENFRIED CO., Ltd.,**  
BREWERS,  
AUCKLAND.

**GREENMEADOWS VINEYARD.**

HAWKES BAY.

Eight Medals at Christchurch Exhibitions

for

BURGUNDY,	PORT,
CHABLIS,	SHERRY,
CLARET,	CONSTANTIA,
HOCK,	MADIERA.

**SAVE MONEY**

BY HAVING  
YOUR CLOTHES CLEANED  
BY OUR  
FRENCH DRY-CLEANING  
PROCESS.

LADIES' COSTUMES, FANCY  
DRESSES, CAPES, JACKETS,  
BLOUSES, FUR AND BOATS  
CLEANED BY THIS METHOD.  
No part of the linings, trimmings, or ornaments need be removed. The goods are not shrunk or altered in shape; the lustre and finish are preserved, and the most delicate colours are not injured.

GENTLEMEN'S DRESS  
CLOTHES AND SUMMER  
SUITS  
ARE MADE EQUAL TO NEW  
BY THIS PROCESS.

**D. & A. BROWN,**  
HIGHEST-CLASS CLEANERS  
AND  
DYERS,  
SHORTLAND-STREET.  
(4) years' practical experience.)  
Established 1866.  
Works: Grafton Terrace, Auckland.

**FRANKTON JUNCTION HOTEL.**

FRANKTON JUNCTION.

CLOSE TO RAILWAY STATION.

GOOD ACCOMMODATION FOR  
TRAVELLERS.

FIRST-CLASS TABLE.

BEST BRANDS OF WINES AND  
SPIRITS.

PORTER MEETS NIGHT EXPRESS  
OVER MAIN TRUNK.

**E. F. MORIARTY**

(Late of Paeroa).  
PROPRIETOR.

**BEN NEVIS HOTEL.**

TURAKINA.

This Hotel is replete with every convenience, and affords excellent Accommodation for the Commercial and Travelling public.

Only the Best Wines, Ales and Spirits kept.

E. BARNES ..... Proprietor.

**LAING'S MASONIC HOTEL.**

WOODVILLE.

Excellent Accommodation for the Travelling Public at a Moderate Tariff. Best Wines, Spirits, Ales, etc. Good Billiard Table.

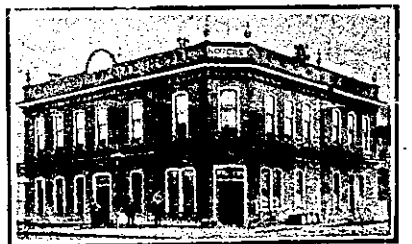
Ample Stabling and Paddocking.

ANDREW LAING (Late of Foxton)  
Proprietor.

**REVINGTON'S HOTEL.**

GREY-  
MOUTH.

The Leading Commercial Hotel on the Coast. Sample Rooms, Billiard Room, Hot and Cold Baths. Only the Best Brands of Liquor stocked.  
Phone 70. Box 38.  
Telegrams Revington, Greymouth.



**DOGERS' CLUB HOTEL.**  
GREYTOWN NORTH.

PERCY ROGERS ..... Proprietor.

Up-to-date Sample Rooms, appointed by Commercial Travellers' Association.  
BEST WINES AND SPIRITS ONLY KEPT IN STOCK.



**JUNCTION HOTEL, KAWAKAWA.**

J. HOGG ..... Proprietor.

Mr. Hogg will be pleased to meet his numerous friends at the above well-known favourite and spacious Hostelry, and hopes by strict attention and civility to customers to merit a continuance of the liberal support accorded to the house in the past. Wines, Spirits and Beers of the First Quality. Billiards, Buggies, etc. Sample Rooms. The Best Accommodation. A Good Table kept. Charges Moderate.



**SUMNER HOTEL.**

GEO. VINCENT, Proprietor.

Best Accommodation. Moderate Tariff. Afternoon Tea. Sundays and Holidays a Speciality.

**OEO HOTEL, OEO.**

ARTHUR MARTIN ..... Proprietor.

The Travelling Public will find every Modern Convenience at this well-known house.

BEST WINES AND SPIRITS ONLY STOCKED.

**IN ALL WALKS OF LIFE**  
FOR THE BUSINESS-MAN  
AND FOR THE WORKER

**KAMO**

ENSURES GOOD HEALTH  
KAMO WATER  
KAMO & MILK  
KAMO & WHISKY  
KAMO SQUASH

**Show Catalogues Trade Price Lists,**

Receipt Books Order Forms Invoices  
Billheads, Handbills, Circulars

Large and Small Posters and Playbills  
Ball and Theatre Programmes, Professional and Visiting Cards,

Send for Quotations to  
**ARTHUR CLEAVE & CO., LTD.,** **PRINTING**  
Vulcan Lane, AUCKLAND. Executed at Lowest Rates.

**TO COOL AND REFRESH**  
your skin in hot weather and prevent Sunburn, Tan Redness, etc., use

**Rowland's KALYDOR**

It soothes and heals irritation, insect stings and all cutaneous defects, and produces a lovely delicate complexion. Sizes 2s. 3d. & 4s. 6d. Sold by Stores, Chemists, and A. Rowland & Sons, Hatton Garden, London.